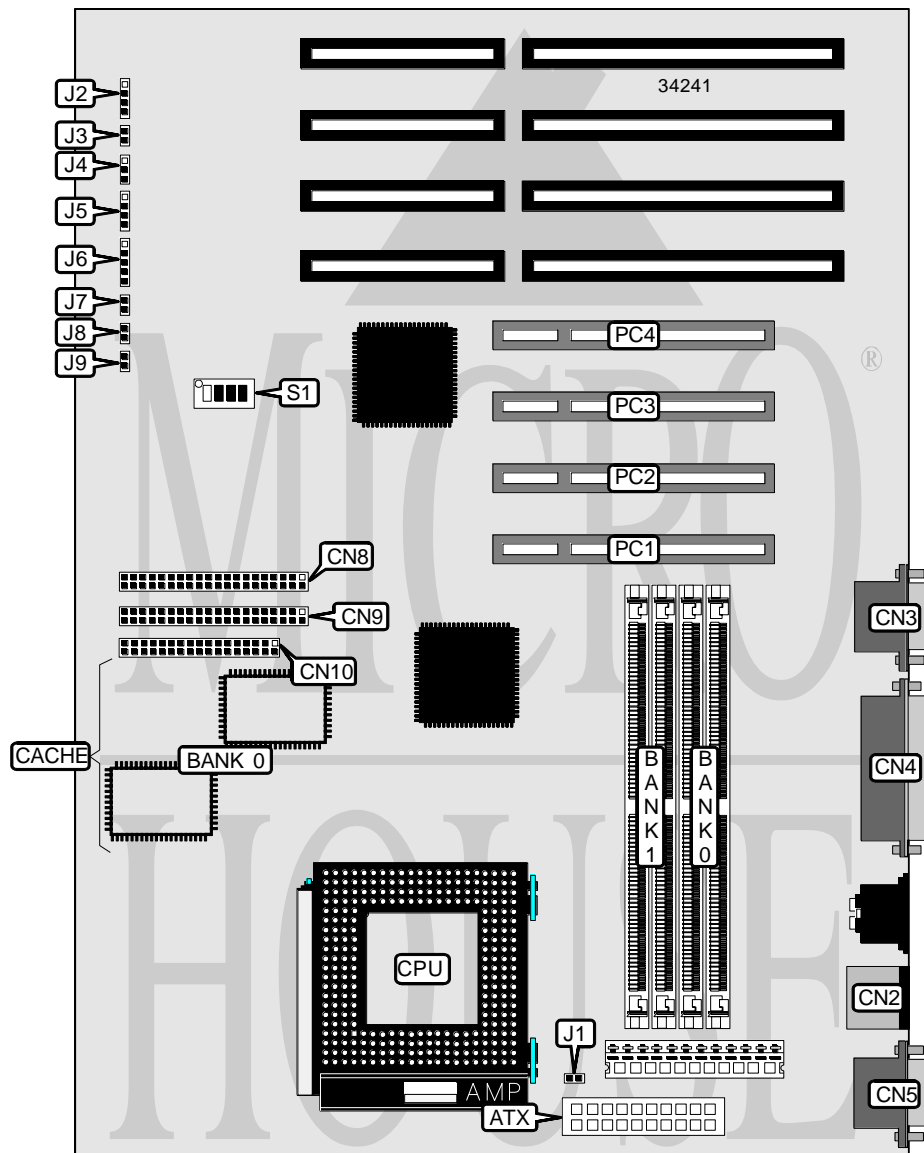


# GIGA-BYTE TECHNOLOGY CO., LTD.

## GA - 586 U X

<b>Processor</b>	CX M1/AM K5/Pentium
<b>Processor Speed</b>	75/90/100/120/125/133/150/166/180/200MHz
<b>Chip Set</b>	Unidentified
<b>Video Chip Set</b>	None
<b>Maximum Onboard Memory</b>	512MB (EDO supported)
<b>Maximum Video Memory</b>	None
<b>Cache</b>	512KB
<b>BIOS</b>	Award
<b>Dimensions</b>	305mm x 244mm
<b>I/O Options</b>	32-bit PCI slots (4), floppy drive interface, green PC connector, IDE interfaces (2), parallel port, PS/2 mouse port, serial ports (2), IR connector, ATX power connector
<b>NPU Options</b>	None



Continued on next page . . .

GIGA-BYTE TECHNOLOGY CO., LTD.  
GA - 586 U X

... continued from previous page

CONNECTIONS			
Purpose	Location	Purpose	Location
ATX power connector	ATX	Speaker	J2
PS/2 mouse port	CN2	Reset switch	J3
Serial port 2	CN3	Power LED	J4
Parallel port	CN4	IDE interface LED	J5
Serial port 1	CN5	IR connector	J6
IDE interface 1	CN8	Green PC connector	J7
IDE interface 2	CN9	Soft off power supply	J8
Floppy drive interface	CN10	Green PC LED	J9
Chassis fan power	J1	32-bit PCI slots	PC1 – PC4

DRAM CONFIGURATION		
Size	Bank 0	Bank 1
8MB	(2) 1M x 36	None
16MB	(2) 2M x 36	None
16MB	(2) 1M x 36	(2) 1M x 36
24MB	(2) 2M x 36	(2) 1M x 36
32MB	(2) 4M x 36	None
32MB	(2) 2M x 36	(2) 2M x 36
40MB	(2) 4M x 36	(2) 1M x 36
48MB	(2) 4M x 36	(2) 2M x 36
64MB	(2) 8M x 36	None
64MB	(2) 4M x 36	(2) 4M x 36
72MB	(2) 8M x 36	(2) 1M x 36
80MB	(2) 8M x 36	(2) 2M x 36
96MB	(2) 8M x 36	(2) 4M x 36
128MB	(2) 8M x 36	(2) 8M x 36
128MB	(2) 16M x 36	None
136MB	(2) 16M x 36	(2) 1M x 36
144MB	(2) 16M x 36	(2) 2M x 36
160MB	(2) 16M x 36	(2) 4M x 36
192MB	(2) 16M x 36	(2) 8M x 36
256MB	(2) 16M x 36	(2) 16M x 36
256MB	(2) 32M x 36	None
264MB	(2) 32M x 36	(2) 1M x 36
272MB	(2) 32M x 36	(2) 2M x 36
288MB	(2) 32M x 36	(2) 4M x 36
320MB	(2) 32M x 36	(2) 8M x 36
384MB	(2) 32M x 36	(2) 16M x 36
512MB	(2) 32M x 36	(2) 32M x 36

Note: Board accepts EDO memory. Banks are interchangeable.

Continued on next page. . .

GIGA-BYTE TECHNOLOGY CO., LTD.  
GA - 586 U X

... continued from previous page

CACHE CONFIGURATION	
Size	Bank 0
512KB	(2) 64K x 32

CPU SPEED SELECTION (CYRIX)						
CPU speed	Clock speed	Multiplier	S1/1	S1/2	S1/3	S1/4
120MHz	50MHz	2x	On	On	Off	On
133MHz	55MHz	2x	Off	Off	Off	On
150MHz	60MHz	2x	On	Off	Off	On
166MHz	66MHz	2x	Off	On	Off	On

CPU SPEED SELECTION (AMD)						
CPU speed	Clock speed	Multiplier	S1/1	S1/2	S1/3	S1/4
75MHz	50MHz	1.5x	On	On	Off	Off
90MHz	60MHz	1.5x	On	Off	Off	Off
100MHz	66MHz	1.5x	Off	On	Off	Off
120MHz	60MHz	1.5x	On	Off	Off	Off
133MHz	66MHz	1.5x	Off	On	Off	Off

CPU SPEED SELECTION (INTEL)						
CPU speed	Clock speed	Multiplier	S1/1	S1/2	S1/3	S1/4
75MHz	50MHz	1.5x	On	On	Off	Off
90MHz	60MHz	1.5x	On	Off	Off	Off
100MHz	66MHz	1.5x	Off	On	Off	Off
120MHz	60MHz	2x	On	Off	Off	On
125MHz	50MHz	2.5x	On	On	On	On
133MHz	66MHz	2x	Off	On	Off	On
150MHz	60MHz	2.5x	On	Off	On	On
166MHz	66MHz	2.5x	Off	On	On	On
180MHz	60MHz	3x	On	Off	On	Off
200MHz	66MHz	3x	Off	On	On	Off