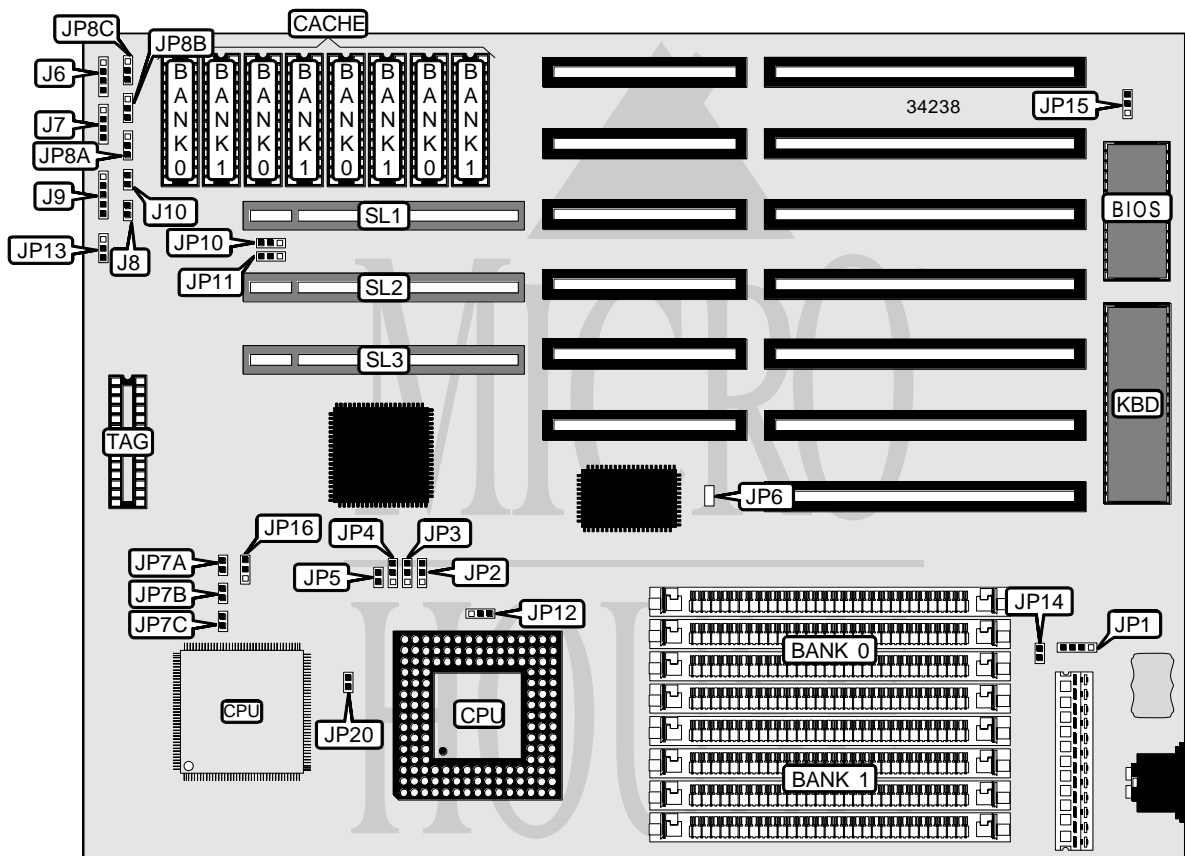


# FOREX COMPUTER CORPORATION

## FOREX 486 (REV. VL3H)

<b>Processor</b>	80486SX/80487SX/80486DX/80486DX2/P23T/P24T
<b>Processor Speed</b>	20/25/33/40/50(internal)/50/66(internal)MHz
<b>Chip Set</b>	Forex
<b>Video Chip Set</b>	None
<b>Maximum Onboard Memory</b>	32MB
<b>Maximum Video Memory</b>	None
<b>Cache</b>	64/128/256KB
<b>BIOS</b>	AMI
<b>Dimensions</b>	260mm x 220mm
<b>I/O Options</b>	32-bit VESA local bus slots (3), green PC connector
<b>NPU Options</b>	None



CONNECTIONS			
Purpose	Location	Purpose	Location
Turbo LED	J6	External battery	JP1
Speaker	J7	Green PC connector	JP14
Turbo switch	J8	Green PC LED	JP15
Power LED & keylock	J9	32-bit VESA local bus slots	SL1 – SL3
Reset switch	J10		

Continued on next page. . .

FOREX COMPUTER CORPORATION  
FOREX 486 (REV. VL3H)

... continued from previous page

USER CONFIGURABLE SETTINGS		
Function	Label	Position
PQFP CPU enabled	JP5	Open
PQFP CPU disabled	JP5	Closed
í CMOS memory normal operation	JP6	Unidentified
CMOS memory clear	JP6	Unidentified
Green PC disabled	JP13	Open
Green PC enabled	JP13	Closed
Green clock speed select 8MHz	JP16	Pins 2 & 3 closed
Green clock speed select 16MHz	JP16	Pins 1 & 2 closed

DRAM CONFIGURATION		
Size	Bank 0	Bank 1
1MB	(4) 256K x 9	None
2MB	(4) 256K x 9	(4) 256K x 9
4MB	(4) 1M x 9	None
5MB	(4) 256K x 9	(4) 1M x 9
8MB	(4) 1M x 9	(4) 1M x 9
16MB	(4) 4M x 9	None
20MB	(4) 1M x 9	(4) 4M x 9
32MB	(4) 4M x 9	(4) 4M x 9

CACHE CONFIGURATION			
Size	Bank 0	Bank 1	TAG
64KB	(4) 8K x 8	(4) 8K x 8	(1) 8K x 8
128KB	(4) 32K x 8	None	(1) 8K x 8
256KB	(4) 32K x 8	(4) 32K x 8	(1) 16K/32K x 8

CACHE JUMPER CONFIGURATION			
Size	JP8A	JP8B	JP8C
64KB	Pins 2 & 3 closed	Pins 1 & 2 closed	Pins 2 & 3 closed
128KB	Pins 1 & 2 closed	Pins 2 & 3 closed	Pins 1 & 2 closed
256KB	Pins 1 & 2 closed	Pins 1 & 2 closed	Pins 1 & 2 closed

CPU SPEED SELECTION			
Speed	JP7A	JP7B	JP7C
20MHz	Open	Closed	Closed
25MHz	Closed	Open	Open
33MHz	Open	Open	Open
40MHz	Closed	Closed	Open
50iMHz	Closed	Open	Open
50MHz	Open	Closed	Open
66iMHz	Open	Open	Open

Continued on next page...

FOREX COMPUTER CORPORATION  
 FOREX 486 (REV. VL3H)

... continued from previous page

CPU TYPE SELECTION				
Type	JP2	JP3	JP4	JP12
80486SX	Pins 2 & 3 closed	Pins 2 & 3 closed	Pins 2 & 3 closed	Pins 1 & 2 closed
80487SX	Pins 2 & 3 closed	Pins 1 & 2 closed	Pins 1 & 2 closed	Pins 1 & 2 closed
80486DX (PQFP)	Pins 2 & 3 closed	Pins 2 & 3 closed	Pins 2 & 3 closed	Pins 1 & 2 closed
80486DX (PGA)	Pins 1 & 2 closed	Pins 1 & 2 closed	Pins 1 & 2 closed	Pins 1 & 2 closed
80486DX2	Pins 1 & 2 closed	Pins 1 & 2 closed	Pins 1 & 2 closed	Pins 1 & 2 closed
P23T	Pins 2 & 3 closed	Pins 1 & 2 closed	Pins 1 & 2 closed	Pins 1 & 2 closed
P24T	Pins 1 & 2 closed	Pins 1 & 2 closed	Pins 1 & 2 closed	Pins 2 & 3 closed

CPU TYPE SELECTION (CYRIX ONLY)	
Type	JP20
CX486DX	Open
CX486DX2	Closed

VL BUS WAIT STATE SELECTION	
Setting	JP10
0	Pins 1 & 2 closed
1	Pins 2 & 3 closed

VL BUS SPEED SELECTION	
Speed	JP11
<= 33MHz	Pins 1 & 2 closed
>33 MHz	Pins 2 & 3 closed