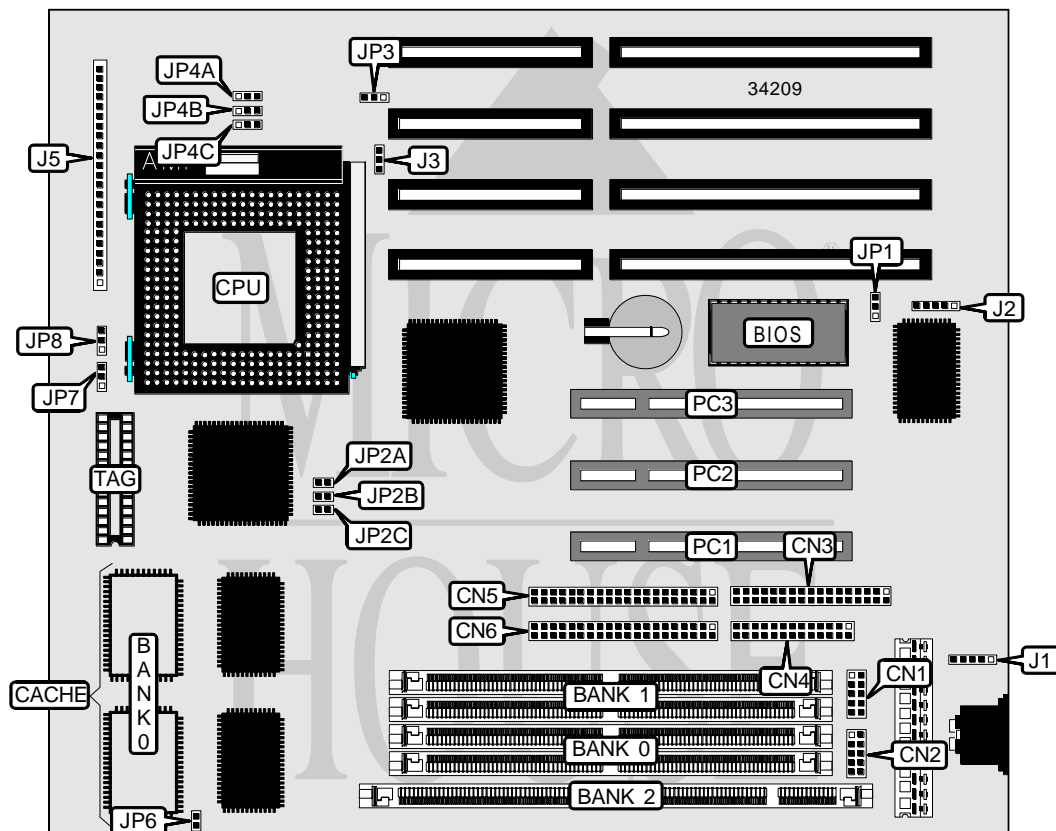


# EPOX COMPUTER CO., LTD.

## P 5 5 - V P

|                               |   |
|-------------------------------|---|
| <b>Processor</b>              | CX M1/AM K5/Pentium   |
| <b>Processor Speed</b>        | 75/90/100/120/133/150/166/180/200MHz  |
| <b>Chip Set</b>               | VIA   |
| <b>Video Chip Set</b>         | None  |
| <b>Maximum Onboard Memory</b> | 192MB (EDO supported)   |
| <b>Maximum Video Memory</b>   | None  |
| <b>Cache</b>                  | 256/512KB   |
| <b>BIOS</b>                   | Award   |
| <b>Dimensions</b>             | 254mm x 218mm   |
| <b>I/O Options</b>            | 32-bit PCI slots (3), floppy drive interface, green PC connector, IDE interfaces (2), parallel port, PS/2 mouse interface, serial ports (2), IR connector |
| <b>NPU Options</b>            | None  |



*Continued on next page . . .*

... continued from previous page

| CONNECTIONS            |          |                     |                 |
|------------------------|----------|---------------------|-----------------|
| Purpose                | Location | Purpose             | Location        |
| Serial port 1          | CN1      | Power LED & keylock | J5/pins 1 – 5   |
| Serial port 2          | CN2      | Speaker             | J5/pins 7 - 10  |
| Floppy drive interface | CN3      | Reset switch        | J5/pins 12 & 13 |
| Parallel port          | CN4      | Green PC connector  | J5/pins 15 & 16 |
| IDE interface 2        | CN5      | Turbo LED           | J5/pins 18 & 19 |
| IDE interface 1        | CN6      | IDE interface LED   | J5/pins 21 & 22 |
| PS/2 mouse interface   | J1       | Green PC LED        | J5/pins 24 & 25 |
| IR connector           | J2       | 32-bit PCI slots    | PC1 – PC3       |
| Chassis fan power      | J3       |                     |                 |

| USER CONFIGURABLE SETTINGS    |       |                   |
|-------------------------------|-------|-------------------|
| Function                      | Label | Position          |
| Flash BIOS voltage select 12v | JP1   | Pins 2 & 3 closed |
| Flash BIOS voltage select 5v  | JP1   | Pins 1 & 2 closed |

| DIMM/DRAM CONFIGURATION |             |             |             |
|-------------------------|-------------|-------------|-------------|
| Size                    | Bank 0      | Bank 1      | Bank 2      |
| 8MB                     | (2) 1M x 36 | None        | None        |
| 8MB                     | None        | None        | (1) 1M x 64 |
| 16MB                    | (2) 2M x 36 | None        | None        |
| 16MB                    | (2) 1M x 36 | (2) 1M x 36 | None        |
| 16MB                    | None        | None        | (1) 2M x 64 |
| 16MB                    | (2) 1M x 36 | None        | (1) 1M x 64 |
| 24MB                    | (2) 2M x 36 | (2) 1M x 36 | None        |
| 24MB                    | (2) 1M x 36 | None        | (1) 2M x 64 |
| 24MB                    | (2) 2M x 36 | None        | (1) 1M x 64 |
| 24MB                    | (2) 1M x 36 | (2) 1M x 36 | (1) 1M x 64 |
| 32MB                    | (2) 4M x 36 | None        | None        |
| 32MB                    | (2) 2M x 36 | (2) 2M x 36 | None        |
| 32MB                    | None        | None        | (1) 4M x 64 |
| 32MB                    | (2) 2M x 36 | None        | (1) 2M x 64 |
| 40MB                    | (2) 4M x 36 | (2) 1M x 36 | None        |
| 40MB                    | (2) 1M x 36 | None        | (1) 4M x 64 |
| 40MB                    | (2) 4M x 36 | None        | (1) 1M x 64 |
| 48MB                    | (2) 4M x 36 | (2) 2M x 36 | None        |
| 48MB                    | (2) 2M x 36 | None        | (1) 4M x 64 |
| 48MB                    | (2) 4M x 36 | None        | (1) 2M x 64 |
| 48MB                    | (2) 2M x 36 | (2) 2M x 36 | (1) 2M x 64 |
| 64MB                    | (2) 8M x 36 | None        | None        |
| 64MB                    | (2) 4M x 36 | (2) 4M x 36 | None        |
| 64MB                    | None        | None        | (1) 8M x 64 |
| 64MB                    | (2) 4M x 36 | None        | (1) 4M x 64 |

Continued on next page...

... continued from previous page

| DIMM/DRAM CONFIGURATION (CON'T) |             |             |             |
|---------------------------------|-------------|-------------|-------------|
| Size                            | Bank 0      | Bank 1      | Bank 2      |
| 72MB                            | (2) 8M x 36 | (2) 1M x 36 | None        |
| 72MB                            | (2) 1M x 36 | None        | (1) 8M x 64 |
| 72MB                            | (2) 8M x 36 | None        | (1) 1M x 64 |
| 80MB                            | (2) 8M x 36 | (2) 2M x 36 | None        |
| 80MB                            | (2) 2M x 36 | None        | (1) 8M x 64 |
| 80MB                            | (2) 8M x 36 | None        | (1) 2M x 64 |
| 96MB                            | (2) 8M x 36 | (2) 4M x 36 | None        |
| 96MB                            | (2) 4M x 36 | None        | (1) 8M x 64 |
| 96MB                            | (2) 8M x 36 | None        | (1) 4M x 64 |
| 96MB                            | (2) 4M x 36 | (2) 4M x 36 | (2) 4M x 36 |
| 128MB                           | (2) 8M x 36 | (2) 8M x 36 | None        |
| 128MB                           | (2) 8M x 36 | None        | (1) 8M x 64 |
| 192MB                           | (2) 8M x 36 | (2) 8M x 36 | (1) 8M x 64 |

Note: Board accepts EDO memory.

| CACHE CONFIGURATION |              |              |
|---------------------|--------------|--------------|
| Size                | Bank 0       | TAG          |
| 256KB               | (2) 32K x 32 | Unidentified |
| 512KB               | (2) 64K x 32 | Unidentified |

| CPU SPEED SELECTION (CYRIX) |             |            |        |        |        |       |       |
|-----------------------------|-------------|------------|--------|--------|--------|-------|-------|
| CPU speed                   | Clock speed | Multiplier | JP2A   | JP2B   | JP2C   | JP7   | JP8   |
| 120MHz                      | 50MHz       | 2x         | Closed | Closed | Closed | 2 & 3 | 1 & 2 |
| 133MHz                      | 55MHz       | 2x         | Closed | Closed | Open   | 2 & 3 | 1 & 2 |
| 150MHz                      | 60MHz       | 2x         | Open   | Closed | Closed | 2 & 3 | 1 & 2 |
| 166MHz                      | 66MHz       | 2x         | Closed | Open   | Closed | 2 & 3 | 1 & 2 |
| 200MHz                      | 75MHz       | 2x         | Open   | Closed | Open   | 2 & 3 | 1 & 2 |

Note: Pins designated should be in the closed position.

| CPU SPEED SELECTION (AMD) |             |            |        |        |        |       |       |
|---------------------------|-------------|------------|--------|--------|--------|-------|-------|
| CPU speed                 | Clock speed | Multiplier | JP2A   | JP2B   | JP2C   | JP7   | JP8   |
| 75MHz                     | 50MHz       | 1.5x       | Closed | Closed | Closed | 1 & 2 | 1 & 2 |
| 90MHz                     | 60MHz       | 1.5x       | Open   | Closed | Closed | 1 & 2 | 1 & 2 |
| 100MHz                    | 66MHz       | 1.5x       | Closed | Open   | Closed | 1 & 2 | 1 & 2 |
| 120MHz                    | 60MHz       | 2x         | Open   | Closed | Closed | 2 & 3 | 1 & 2 |
| 133MHz                    | 66MHz       | 2x         | Closed | Open   | Closed | 2 & 3 | 1 & 2 |
| 150MHz                    | 60MHz       | 2.5x       | Open   | Closed | Closed | 2 & 3 | 2 & 3 |
| 166MHz                    | 66MHz       | 2.5x       | Closed | Open   | Closed | 2 & 3 | 2 & 3 |
| 180MHz                    | 60MHz       | 3x         | Open   | Closed | Closed | 1 & 2 | 2 & 3 |
| 200MHz                    | 66MHz       | 3x         | Closed | Open   | Closed | 1 & 2 | 2 & 3 |

Note: Pins designated should be in the closed position.

Continued on next page. . .

EPOX COMPUTER CO., LTD.

P 5 5 - V P

... continued from previous page

| CPU SPEED SELECTION (INTEL) |             |            |        |        |        |       |       |
|-----------------------------|-------------|------------|--------|--------|--------|-------|-------|
| CPU speed                   | Clock speed | Multiplier | JP2A   | JP2B   | JP2C   | JP7   | JP8   |
| 75MHz                       | 50MHz       | 1.5x       | Closed | Closed | Closed | 1 & 2 | 1 & 2 |
| 90MHz                       | 60MHz       | 1.5x       | Open   | Closed | Closed | 1 & 2 | 1 & 2 |
| 100MHz                      | 66MHz       | 1.5x       | Closed | Open   | Closed | 1 & 2 | 1 & 2 |
| 120MHz                      | 60MHz       | 2x         | Open   | Closed | Closed | 2 & 3 | 1 & 2 |
| 133MHz                      | 66MHz       | 2x         | Closed | Open   | Closed | 2 & 3 | 1 & 2 |
| 150MHz                      | 60MHz       | 2.5x       | Open   | Closed | Closed | 2 & 3 | 2 & 3 |
| 166MHz                      | 66MHz       | 2.5x       | Closed | Open   | Closed | 2 & 3 | 2 & 3 |
| 180MHz                      | 60MHz       | 3x         | Open   | Closed | Closed | 1 & 2 | 2 & 3 |
| 200MHz                      | 66MHz       | 3x         | Closed | Open   | Closed | 1 & 2 | 2 & 3 |

Note: Pins designated should be in the closed position.

| CPU TYPE SELECTION |                   |                   |                   |        |
|--------------------|-------------------|-------------------|-------------------|--------|
| Type               | JP4A              | JP4B              | JP4C              | JP6    |
| CX6X86             | Pins 1 & 2 closed | Pins 1 & 2 closed | Pins 1 & 2 closed | Open   |
| CX6X86L            | Pins 2 & 3 closed | Pins 2 & 3 closed | Pins 2 & 3 closed | Open   |
| AM K5              | Pins 1 & 2 closed | Pins 1 & 2 closed | Pins 1 & 2 closed | Closed |
| AM K6              | Pins 2 & 3 closed | Pins 2 & 3 closed | Pins 2 & 3 closed | Closed |
| Intel              | Pins 1 & 2 closed | Pins 1 & 2 closed | Pins 1 & 2 closed | Closed |
| Intel MMX          | Pins 2 & 3 closed | Pins 2 & 3 closed | Pins 2 & 3 closed | Closed |

| CPU VOLTAGE SELECTION |                   |
|-----------------------|-------------------|
| Voltage               | JP3               |
| 2.5v                  | Pins 1 & 2 closed |
| 2.8v                  | Pins 2 & 3 closed |
| 2.9v                  | Open              |