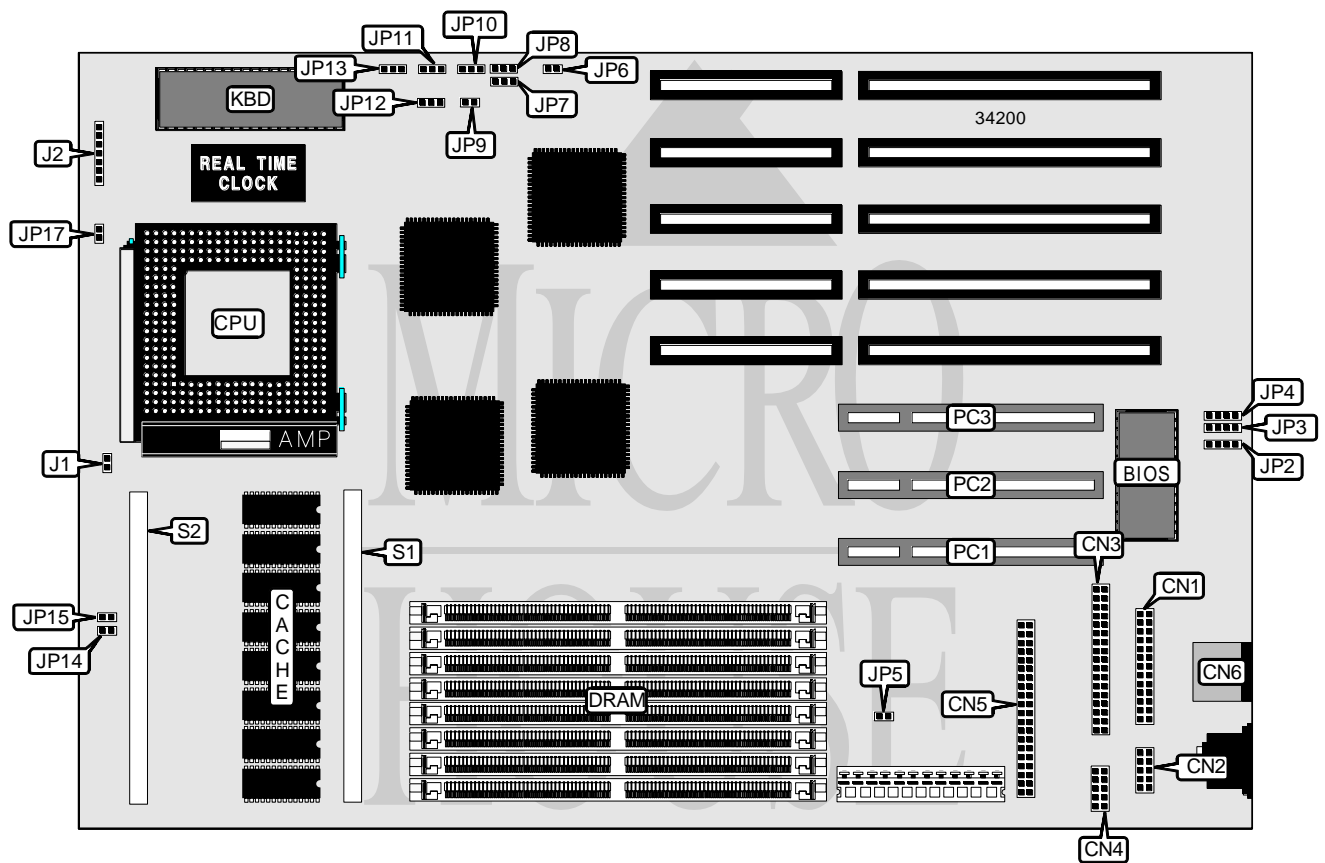


ACER, INC.
V 1 2 P

Processor	Pentium
Processor Speed	Unidentified
Chip Set	Unidentified
Video Chip Set	None
Maximum Onboard Memory	192MB
Maximum Video Memory	None
Cache	256/512KB
BIOS	Unidentified
Dimensions	330mm x 218mm
I/O Options	32-bit PCI slots (3), floppy drive interface, IDE interface, parallel port, PS/2 mouse port, serial ports (2)
NPU Options	None



CONNECTIONS			
Purpose	Location	Purpose	Location
Parallel port	CN1	IDE interface	CN5
Serial port 2	CN2	Chassis fan power	J1
Floppy drive interface	CN3	Keyboard & PS/2 mouse connector	J2
Serial port 1	CN4	32-bit PCI slots	PC1 – PC3

Continued on next page. . .

... continued from previous page

USER CONFIGURABLE SETTINGS		
Function	Label	Position
MS105 SIO chip enabled	JP5	Closed
MS105 SIO chip disabled	JP5	Open
Parallel port bidirectional	JP6	Closed
Parallel port unidirectional	JP6	Open
í Factory configured - do not alter	JP7	Unidentified
í Factory configured - do not alter	JP8	Unidentified
í Factory configured - do not alter	JP9	Unidentified
Password disabled	JP11	Pins 1 & 2 closed
Password enabled	JP11	Pins 2 & 3 closed
Keylock disabled	JP17	Closed
Keylock enabled	JP17	Open

DRAM CONFIGURATION			
Size	Bank 0	Bank 1	Bank 2
4MB	(2) 1M x 36	None	None
8MB	(2) 1M x 36	(2) 1M x 36	None
16MB	(2) 1M x 36	(2) 1M x 36	None
16MB	(2) 2M x 36	None	None
24MB	(2) 2M x 36	(2) 1M x 36	None
24MB	(2) 1M x 36	(2) 1M x 36	(2) 1M x 36
32MB	(2) 4M x 36	None	None
32MB	(2) 2M x 36	(2) 2M x 36	None
40MB	(2) 4M x 36	(2) 1M x 36	None
48MB	(2) 4M x 36	(2) 2M x 36	None
48MB	(2) 4M x 36	(2) 1M x 36	(2) 1M x 36
56MB	(2) 4M x 36	(2) 2M x 36	(2) 1M x 36
64MB	(2) 8M x 36	None	None
64MB	(2) 4M x 36	(2) 4M x 36	None
80MB	(2) 8M x 36	(2) 2M x 36	None
80MB	(2) 8M x 36	(2) 1M x 36	(2) 1M x 36
88MB	(2) 8M x 36	(2) 2M x 36	(2) 1M x 36
96MB	(2) 8M x 36	(2) 4M x 36	None
96MB	(2) 4M x 36	(2) 4M x 36	(2) 4M x 36
96MB	(2) 8M x 36	(2) 2M x 36	(2) 2M x 36
104MB	(2) 8M x 36	(2) 4M x 36	(2) 1M x 36
112MB	(2) 8M x 36	(2) 4M x 36	(2) 2M x 36
128MB	(2) 8M x 36	(2) 4M x 36	(2) 4M x 36
128MB	(2) 16M x 36	None	None
128MB	(2) 8M x 36	(2) 8M x 36	None

Continued on next page. . .

... continued from previous page

DRAM CONFIGURATION (CON'T)			
Size	Bank 0	Bank 1	Bank 2
136MB	(2) 8M x 36	(2) 8M x 36	(2) 1M x 36
136MB	(2) 16M x 36	(2) 1M x 36	None
144MB	(2) 16M x 36	(2) 2M x 36	None
144MB	(2) 16M x 36	(2) 1M x 36	(2) 1M x 36
160MB	(2) 16M x 36	(2) 4M x 36	None
160MB	(2) 16M x 36	(2) 2M x 36	(2) 2M x 36
192MB	(2) 16M x 36	(2) 8M x 36	None
192MB	(2) 16M x 36	(2) 4M x 36	(2) 4M x 36

Note: The location of the banks is unidentified.

CACHE CONFIGURATION
Note: Board accepts 256KB/512KB cache. 256KB is factory installed and is not configurable. To upgrade to 512KB, install cache module at S1/S2. The size and actual configuration of the module is unidentified.

CACHE JUMPER CONFIGURATION		
Size	JP10	JP12
None	Pins 1 & 2 closed	Pins 1 & 2 closed
256KB	Pins 2 & 3 closed	Pins 1 & 2 closed
512KB	Pins 2 & 3 closed	Pins 2 & 3 closed

CACHE SIGNAL CONFIGURATION		
Setting	JP14	JP15
Enabled	Closed	Closed
Disabled	Open	Open

CACHE TYPE CONFIGURATION	
Type	JP13
Standard	Pins 1 & 2 closed
Burst	Pins 2 & 3 closed

PCI INTERRUPT B SELECTION	
Setting	JP2
IRQ14	Pins 3 & 4 closed
IRQ15	Pins 1 & 2 closed
Disabled	Pins 2 & 3 closed

Continued on next page. . .

... continued from previous page

PCI INTERRUPT C SELECTION	
Setting	JP3
IRQ11	Pins 1 & 2 closed
IRQ15	Pins 2 & 3 closed
Disabled	Pins 3 & 4 closed

PCI INTERRUPT D SELECTION	
Setting	JP4
IRQ10	Pins 1 & 2 closed
IRQ15	Pins 3 & 4 closed
Disabled	Pins 2 & 3 closed