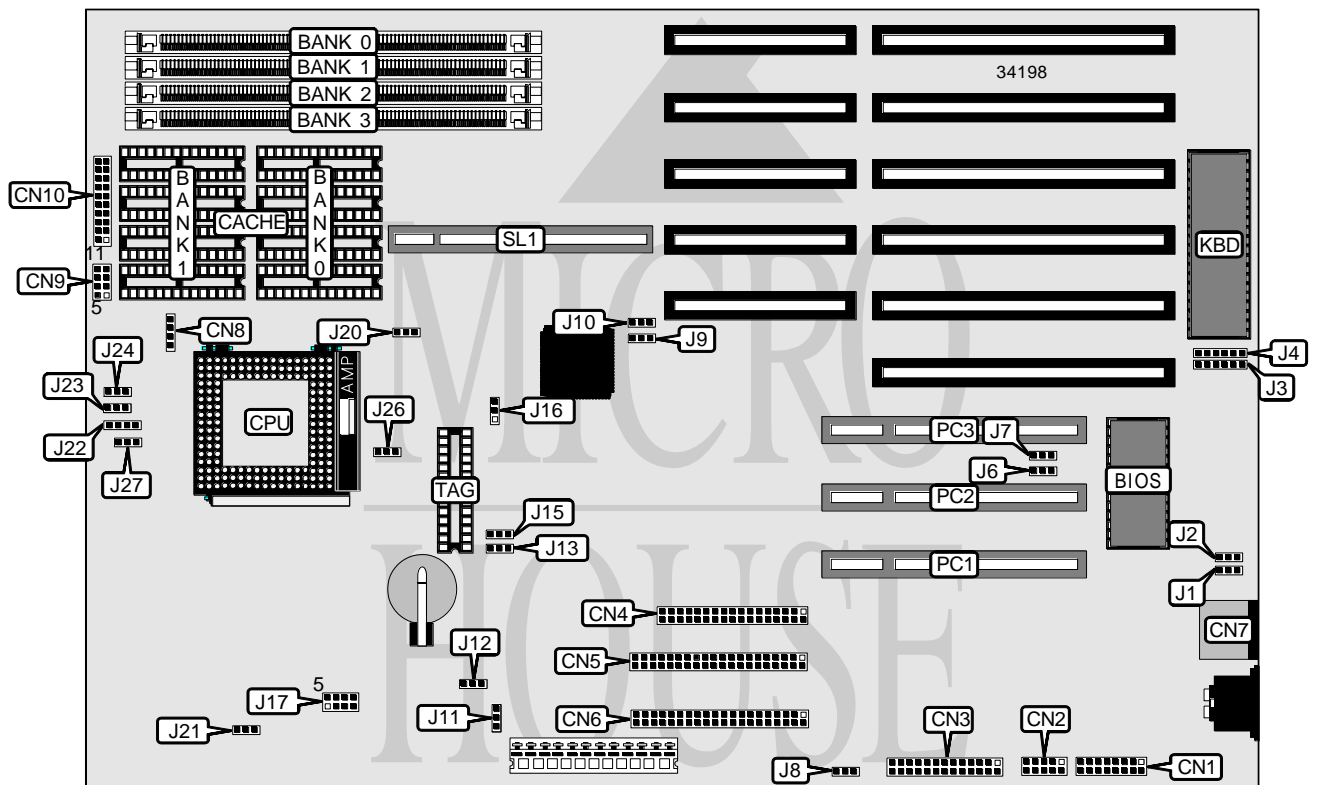


ACER, INC.
 V20-486 ALL IN ONE

Processor	AM486/80486SX/80486DX/80486DX2/80486DX4/P24D/P24T
Processor Speed	25/33/50(internal)/66(internal)/75(internal)/100(internal)MHz
Chip Set	ALI
Video Chip Set	None
Maximum Onboard Memory	Unidentified
Maximum Video Memory	None
Cache	128/256/512KB
BIOS	Acer
Dimensions	330mm x 218mm
I/O Options	32-bit VESA local bus slot, 32-bit PCI slots (2), floppy drive interface, green PC connector, IDE interfaces (2), parallel port, PS/2 mouse port, serial ports (2)
NPU Options	None



Continued on next page. . .

ACER, INC.
V20-486 ALL IN ONE

... continued from previous page

CONNECTIONS			
Purpose	Location	Purpose	Location
Serial port 2	CN1	Reset switch	CN9 pins 7 & 8
Serial port 1	CN2	Power LED & keylock	CN10 pins 1 - 5
Parallel port	CN3	Speaker	CN10 pins 7 - 10
Floppy drive interface	CN4	Turbo LED	CN10 pins 12 & 13
IDE interface 1	CN5	Turbo switch	CN10 pins 15 - 17
IDE interface 2	CN6	Reset switch	CN10 pins 19 & 20
PS/2 mouse port	CN7	32-bit PCI slots	PC11 – PC3
IDE interface LED	CN8	32-bit VESA local bus slot	SL1
Power LED & keylock	CN9 pins 1 - 4		

USER CONFIGURABLE SETTINGS		
Function	Label	Position
í Password enabled	J1	Pins 1 & 2 closed
Password disabled	J1	Pins 2 & 3 closed
í BIOS type select Acer	J2	Pins 1 & 2 closed
BIOS type select OEM	J2	Pins 2 & 3 closed
í Factory configured - do not alter	J3	Pins 3 & 4 closed
í Factory configured - do not alter	J4	Closed
í Factory configured - do not alter	J6	Pins 2 & 3 closed
í Factory configured - do not alter	J7	Pins 2 & 3 closed
í M5115 I/O enabled	J8	Pins 1 & 2 closed
M5115 I/O disabled	J8	Pins 2 & 3 closed
í Factory configured - do not alter	J10	Pins 1 & 2 closed
í Local bus IDE I/O address select 0FXH	J11	Pins 1 & 2 closed
Local bus IDE I/O address select 07XH	J11	Pins 2 & 3 closed
í Local bus IDE enabled	J12	Pins 2 & 3 closed
Local bus IDE disabled	J12	Pins 1 & 2 closed
í Reset switch enabled	J23	Pins 1 & 2 closed
Reset switch disabled	J23	Pins 2 & 3 closed
í Green PC connector disabled	J24	Pins 1 & 2 closed
Green PC connector enabled	J24	Pins 2 & 3 closed

DRAM CONFIGURATION
Note: The maximum amount of memory is unidentified.

CACHE CONFIGURATION			
Size	Bank 0	Bank 1	TAG
128KB	(4) 32K x 8	None	(1) 32K x 8
256KB	(4) 32K x 8	(4) 32K x 8	(1) 32K x 8
512KB	(4) 128K x 8	None	(1) 32K x 8

Continued on next page...

ACER, INC.
V20-486 ALL IN ONE

... continued from previous page

CACHE JUMPER CONFIGURATION			
Size	J13	J15	J16
128KB	Pins 2 & 3 closed	Pins 2 & 3 closed	Pins 1 & 2 closed
256KB	Pins 2 & 3 closed	Pins 1 & 2 closed	Pins 2 & 3 closed
512KB	Pins 1 & 2 closed	Pins 1 & 2 closed	Pins 1 & 2 closed

CPU SPEED SELECTION		
Speed	JP17	JP21
25MHz	Pins 1 & 5 closed	Pins 2 & 3 closed
33MHz	Pins 2 & 6 closed	Pins 2 & 3 closed
50iMHz	Pins 1 & 5 closed	Pins 2 & 3 closed
66iMHz	Pins 2 & 6 closed	Pins 2 & 3 closed
75iMHz	Pins 1 & 5 closed	Pins 2 & 3 closed
100iMHz	Pins 2 & 6 closed	Pins 2 & 3 closed

CPU TYPE SELECTION		
Type	J9	J20
Intel S-series	Pins 2 & 3 closed	Pins 1 & 2 closed
P24D	Pins 1 & 2 closed	Pins 2 & 3 closed
P24T	Pins 1 & 2 closed	Pins 2 & 3 closed

CPU TYPE SELECTION		
Type	J26	J27
Intel	Pins 1 & 2 closed	Pins 1 & 2 closed
AMD	Pins 2 & 3 closed	Pins 2 & 3 closed

CPU MULTIPLIER SELECTION	
Multiplier	J22
2x	Pins 3 & 4 closed
2.5x	Pins 2 & 3 closed
3x	Pins 1 & 2 closed