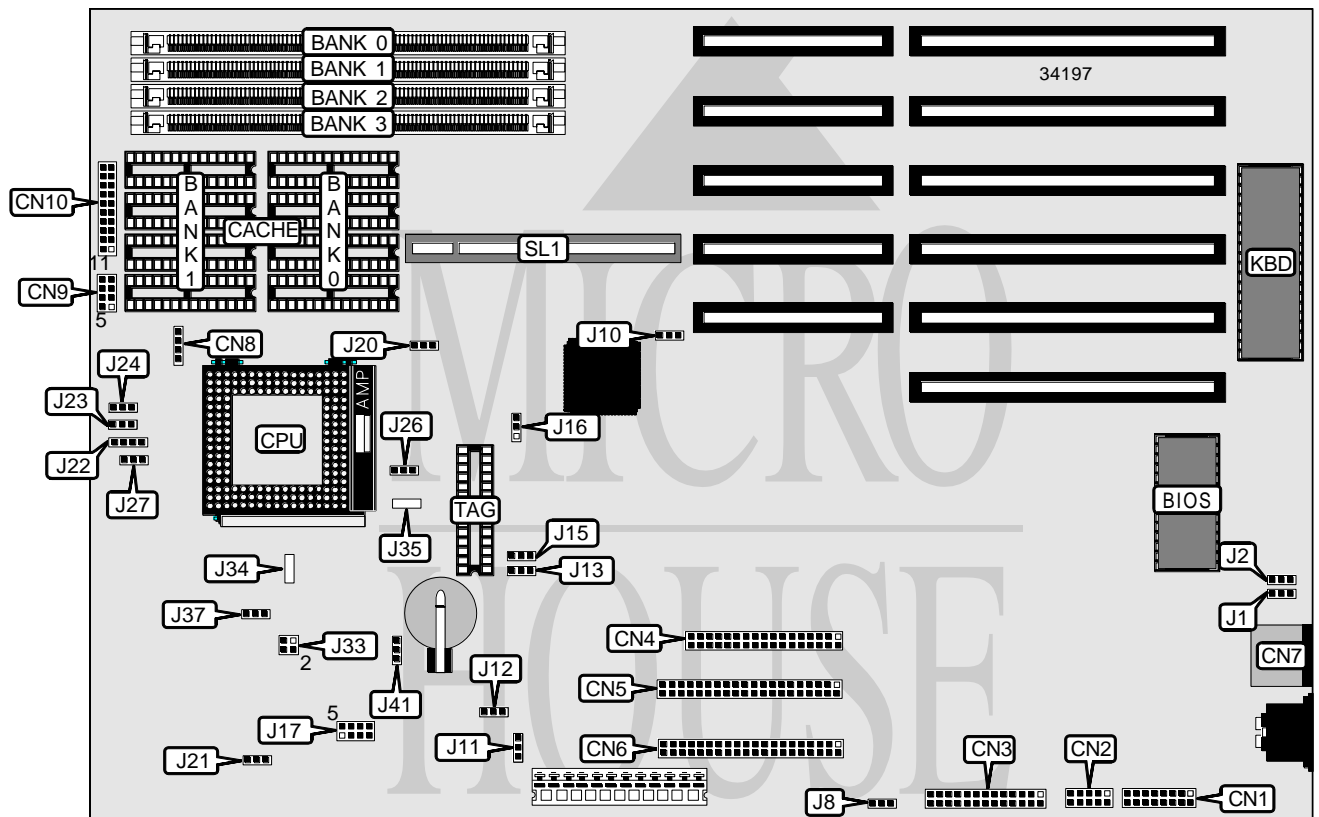


# ACER, INC.

## V20L-486 ALL IN ONE

<b>Processor</b>	AM486SX/80486SX/AM486DX/80486DX/CX486DX2/AM486DX2/ 80486DX2/80486DX4/P24D/P24T
<b>Processor Speed</b>	25/33/40/50(internal)/50/66(internal)/75(internal)/100(internal)MHz
<b>Chip Set</b>	ALI
<b>Video Chip Set</b>	None
<b>Maximum Onboard Memory</b>	Unidentified
<b>Maximum Video Memory</b>	None
<b>Cache</b>	128/256/512KB
<b>BIOS</b>	Unidentified
<b>Dimensions</b>	330mm x 218mm
<b>I/O Options</b>	32-bit VESA local bus slot, floppy drive interface, green PC connector, IDE interfaces (2), parallel port, PS/2 mouse port, serial ports (2)
<b>NPU Options</b>	None



Continued on next page. . .

ACER, INC.  
V20L-486 ALL IN ONE

... continued from previous page

CONNECTIONS			
Purpose	Location	Purpose	Location
Serial port 2	CN1	Power LED & keylock	CN9/pins 1 - 4
Serial port 1	CN2	Reset switch	CN9/pins 7 & 8
Parallel port	CN3	Power LED & keylock	CN10/pins 1 - 5
Floppy drive interface	CN4	Speaker	CN10/pins 7 - 10
IDE interface 1	CN5	Turbo LED	CN10/pins 12 & 13
IDE interface 2	CN6	Turbo switch	CN10/pins 15 - 17
PS/2 mouse port	CN7	Reset switch	CN10/pins 19 & 20
IDE interface LED	CN8	32-bit VESA local bus slot	SL1

USER CONFIGURABLE SETTINGS		
Function	Label	Position
í Password disabled	J1	Pins 2 & 3 closed
Password enabled	J1	Pins 1 & 2 closed
í Factory configured - do not alter (OEM BIOS enabled)	J2	Pins 2 & 3 closed
í M5115 I/O enabled	J8	Pins 1 & 2 closed
M5115 I/O disabled	J8	Pins 2 & 3 closed
í Factory configured - do not alter	J10	Unidentified
í Local bus IDE I/O address select 0FXH	J11	Pins 1 & 2 closed
Local bus IDE I/O address select 07XH	J11	Pins 2 & 3 closed
í Local bus IDE enabled	J12	Pins 2 & 3 closed
Local bus IDE disabled	J12	Pins 1 & 2 closed
í Factory configured - do not alter	J22	Unidentified
Reset switch enabled	J23	Pins 1 & 2 closed
Reset switch disabled	J23	Pins 2 & 3 closed
Green PC connector enabled	J24	Pins 1 & 2 closed
Green PC connector disabled	J24	Pins 2 & 3 closed
Factory configured - do not alter	J41	Pins 2 & 3 closed

DRAM CONFIGURATION
Note: The maximum amount of memory is unidentified.

CACHE CONFIGURATION			
Size	Bank 0	Bank 1	TAG
128KB	(4) 32K x 8	None	(1) 32K x 8
256KB	(4) 32K x 8	(4) 32K x 8	(1) 32K x 8
512KB	(4) 128K x 8	None	(1) 32K x 8

CACHE JUMPER CONFIGURATION			
Size	J13	J15	J16
128KB	Pins 2 & 3 closed	Pins 2 & 3 closed	Pins 1 & 2 closed
256KB	Pins 2 & 3 closed	Pins 1 & 2 closed	Pins 2 & 3 closed
512KB	Pins 1 & 2 closed	Pins 1 & 2 closed	Pins 1 & 2 closed

Continued on next page. . .

ACER, INC.  
V20L-486 ALL IN ONE

... continued from previous page

CPU SPEED SELECTION		
Speed	JP17	JP21
25MHz	Pins 1 & 5 closed	Pins 2 & 3 closed
33MHz	Pins 2 & 6 closed	Pins 2 & 3 closed
40MHz	Pins 3 & 7 closed	Pins 1 & 2 closed
50iMHz	Pins 1 & 5 closed	Pins 2 & 3 closed
50MHz	Pins 4 & 8 closed	Pins 1 & 2 closed
66iMHz	Pins 2 & 6 closed	Pins 2 & 3 closed
75iMHz	Pins 1 & 5 closed	Pins 2 & 3 closed
100iMHz	Pins 2 & 6 closed	Pins 2 & 3 closed

CPU TYPE SELECTION							
Type	J20	J26	J27	J33	J34	J35	J37
AM486SX	1 & 2	1 & 2	1 & 2	1 & 3	2 & 3	2 & 3	2 & 3
80486SX	1 & 2	2 & 3	2 & 3	1 & 3	2 & 3	2 & 3	2 & 3
AM486DX	1 & 2	1 & 2	1 & 2	1 & 3	2 & 3	2 & 3	2 & 3
80486DX	1 & 2	2 & 3	2 & 3	1 & 3	2 & 3	2 & 3	2 & 3
CX486DX2	1 & 2	2 & 3	Open	2 & 4	1 & 2	2 & 3	1 & 2
AM486DX2	1 & 2	1 & 2	1 & 2	1 & 3	2 & 3	2 & 3	2 & 3
80486DX2	1 & 2	2 & 3	2 & 3	1 & 3	2 & 3	2 & 3	2 & 3
80486DX4	1 & 2	2 & 3	2 & 3	1 & 3	2 & 3	2 & 3	2 & 3
P24D	2 & 3	2 & 3	2 & 3	1 & 3	2 & 3	1 & 2	2 & 3
P24T	2 & 3	2 & 3	2 & 3	1 & 3	2 & 3	1 & 2	2 & 3

Note: Pins designated should be in the closed position.