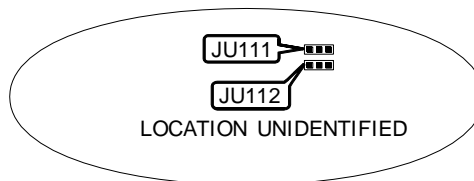
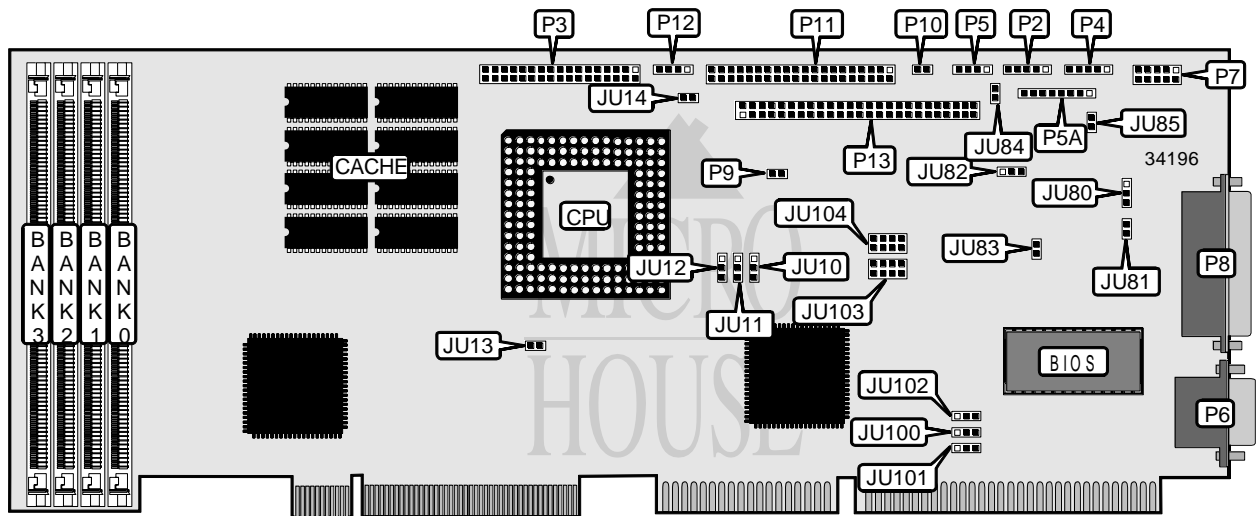


TRENTON TECHNOLOGY, INC.

TR-486DXPCI

Processor	80486SX/SL80486SX/ODP486/80486DX/SL80486DX/80486DX2/SL80486DX2/80486DX4/80486DX4/P24D/P24T
Processor Speed	25/33/50(internal)/66(internal)/100(internal)MHz
Chip Set	Unidentified
Video Chip Set	None
Maximum Onboard Memory	128MB
Maximum Video Memory	None
Cache	256KB
BIOS	AMI
Dimensions	Unidentified
I/O Options	Floppy drive interface, IDE interface, SCSI interface, parallel port, serial ports (2), combo I/O connector
NPU Options	None



CONNECTIONS			
Purpose	Location	Purpose	Location
Power LED & keylock	P2	Parallel port	P8
Floppy drive interface	P3	Chassis fan power	P9
Auxiliary keyboard connector	P4	Reset switch	P10
Speaker	P5	IDE interface	P11
Combo I/O connector	P5A	IDE interface LED	P12
Serial port 1	P6	SCSI interface	P13
Serial port 2	P7		

Continued on next page. . .

TRENTON TECHNOLOGY, INC.
TR-486DXPCI

... continued from previous page

USER CONFIGURABLE SETTINGS		
Function	Label	Position
í Monitor type select color	JU80	Pins 1 & 2 closed
Monitor type select monochrome	JU80	Pins 2 & 3 closed
í Password normal operation	JU81	Open
Password clear	JU81	Closed
í Watchdog timer disabled	JU82	Pins 1 & 2 closed
Watchdog timer enabled	JU82	Pins 2 & 3 closed
í CMOS memory normal operation	JU83	Open
CMOS memory clear	JU83	Closed
í Speaker data signal to pin 8 on P5A enabled	JU84	Closed
Speaker data signal to pin 8 on P5A disabled	JU84	Open
í Reset data signal to pin 1 on P5A enabled	JU85	Closed
Reset data signal to pin 1 on P5A disabled	JU85	Open
í Serial port 1 IRQ select IRQ4	JU100	Pins 2 & 3 closed
Serial port 1 IRQ select IRQ3	JU100	Pins 1 & 2 closed
í Serial port 2 IRQ select IRQ3	JU101	Pins 1 & 2 closed
Serial port 2 IRQ select IRQ4	JU101	Pins 2 & 3 closed
í Parallel port IRQ select IRQ7	JU102	Pins 1 & 2 closed
Parallel port IRQ select IRQ5	JU102	Pins 2 & 3 closed

DRAM CONFIGURATION				
Size	Bank 0	Bank 1	Bank 2	Bank 3
1MB	(1) 256K x 36	None	None	None
2MB	(1) 512K x 36	None	None	None
2MB	(1) 256K x 36	(1) 256K x 36	None	None
4MB	(1) 1M x 36	None	None	None
4MB	(1) 512K x 36	(1) 512K x 36	None	None
4MB	(1) 256K x 36	(1) 256K x 36	(1) 256K x 36	(1) 256K x 36
8MB	(1) 2M x 36	None	None	None
8MB	(1) 1M x 36	(1) 1M x 36	None	None
8MB	(1) 512K x 36	(1) 512K x 36	(1) 512K x 36	(1) 512K x 36
12MB	(1) 1M x 36	(1) 1M x 36	(1) 1M x 36	None
16MB	(1) 4M x 36	None	None	None
16MB	(1) 2M x 36	(1) 2M x 36	None	None
16MB	(1) 1M x 36	(1) 1M x 36	(1) 1M x 36	(1) 1M x 36
24MB	(1) 2M x 36	(1) 2M x 36	(1) 2M x 36	None
32MB	(1) 8M x 36	None	None	None
32MB	(1) 4M x 36	(1) 4M x 36	None	None
32MB	(1) 2M x 36	(1) 2M x 36	(1) 2M x 36	(1) 2M x 36
64MB	(1) 8M x 36	(1) 8M x 36	None	None
64MB	(1) 4M x 36	(1) 4M x 36	(1) 4M x 36	(1) 4M x 36
96MB	(1) 8M x 36	(1) 8M x 36	(1) 8M x 36	None
128MB	(1) 8M x 36	(1) 8M x 36	(1) 8M x 36	(1) 8M x 36

Continued on next page. . .

TRENTON TECHNOLOGY, INC.
TR-486DXPCI

... continued from previous page

CACHE CONFIGURATION	
Note: 256KB cache is factory installed and is not configurable.	

CPU TYPE SELECTION				
Type	JU10	JU11	JU13	JU14
80486SX	Closed	Pins 1 & 2 closed	Open	Open
SL80486SX	Open	Pins 2 & 3 closed	Open	Open
ODP486	Open	Pins 1 & 2 closed	Closed	Open
80486DX	Open	Pins 1 & 2 closed	Open	Open
SL80486DX	Open	Pins 2 & 3 closed	Open	Open
80486DX2	Open	Pins 1 & 2 closed	Open	Open
SL80486DX2	Open	Pins 2 & 3 closed	Open	Open
80486DX4	Open	Pins 1 & 2 closed	Open	Open
SL80486DX4	Open	Pins 2 & 3 closed	Open	Open
P24D	Open	Pins 1 & 2 closed	Open	Closed
P24T	Open	Pins 1 & 2 closed	Open	Closed

CPU MULTIPLIER SELECTION	
Multiplier	JU12
2x	Pins 2 & 3 closed
2.5x	Pins 1 & 2 closed
3x	Open

DMA CHANNEL SELECTION		
Channel	JU103	JU104
3	Pins 7 & 8 closed	Pins 7 & 8 closed
5	Pins 5 & 6 closed	Pins 5 & 6 closed
6	Pins 3 & 4 closed	Pins 3 & 4 closed
7	Pins 1 & 2 closed	Pins 1 & 2 closed

PCI BUS MASTER SELECTION		
Setting	JU111	JU112
Bus master on PCI slot 1	Pins 2 & 3 closed	Pins 1 & 2 closed
Bus master on PCI slot 2	Pins 1 & 2 closed	Pins 2 & 3 closed