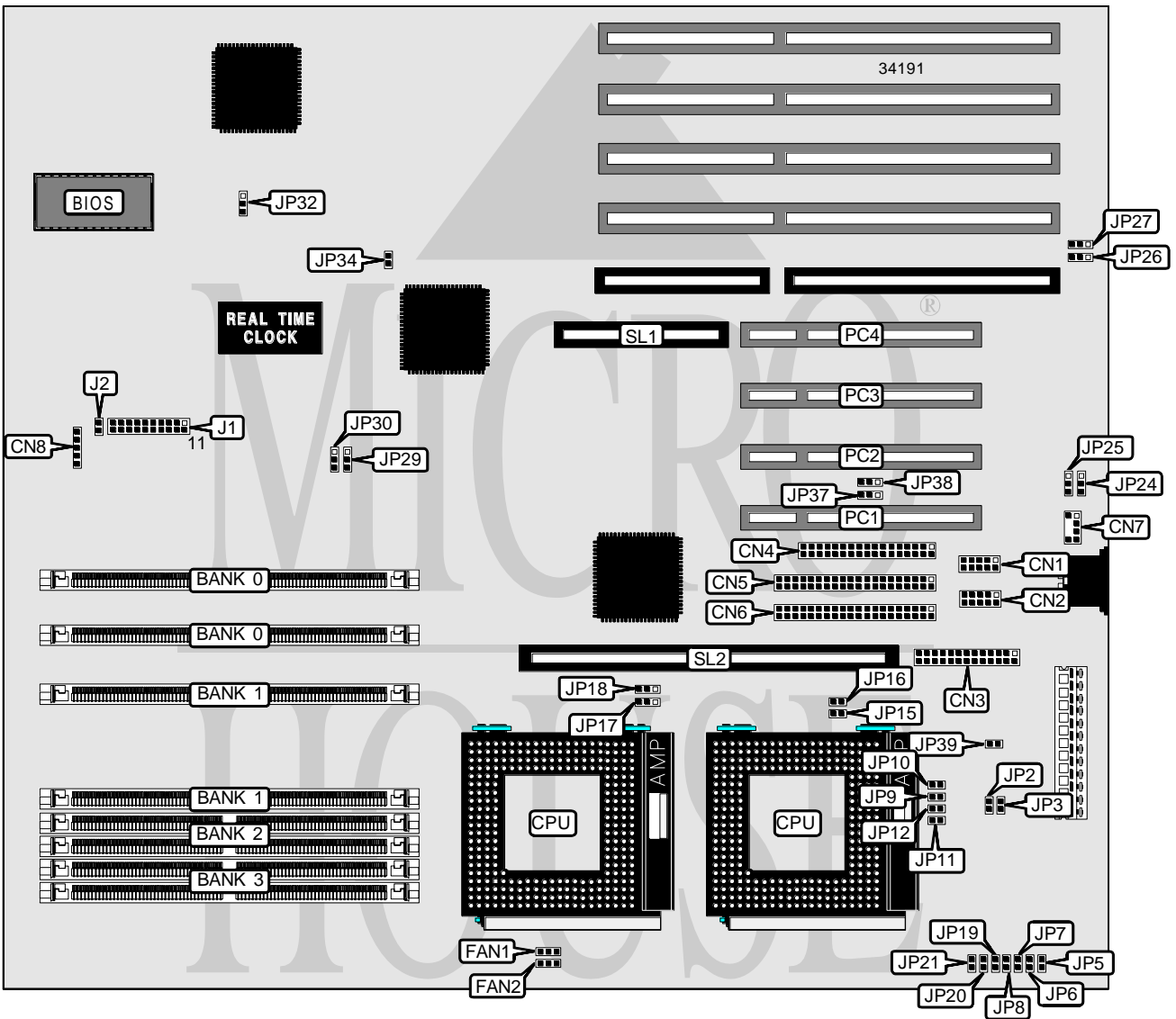


ASUS COMPUTER INTERNATIONAL

P/E - P55T2P4D

Processor	Pentium
Processor Speed	75/90/100/120/133/150/166/180/200MHz
Chip Set	Intel
Video Chip Set	None
Maximum Onboard Memory	512MB (EDO supported)
Maximum Video Memory	None
Cache	256/512KB
BIOS	Unidentified
Dimensions	355mm x 304mm
I/O Options	32-bit PCI slots (4), floppy drive interface, green PC connector, IDE interfaces (2), parallel port, PS/2 mouse interface, serial ports (2), cache slot, IR connector, MediaBus slot
NPU Options	None



Continued on next page. . .

ASUS COMPUTER INTERNATIONAL
P/E - P55T2P4D

... continued from previous page

CONNECTIONS			
Purpose	Location	Purpose	Location
Serial port 2	CN1	Turbo LED	J1 pins 2 & 3
Serial port 1	CN2	Green PC connector	J1 pins 4 & 5
Parallel port	CN3	Reset switch	J1 pins 9 & 10
Floppy drive interface	CN4	Power LED & keylock	J1 pins 11 - 15
IDE interface 1	CN5	Speaker	J1 pins 17 - 20
IDE interface 2	CN6	IDE interface LED	J2
PS/2 mouse interface	CN7	32-bit PCI slots	PC1 – PC4
IR connector	CN8	MediaBus slot	SL1
Chassis fan power	FAN1	Cache slot	SL2
Chassis fan power	FAN2		

USER CONFIGURABLE SETTINGS		
Function	Label	Position
í Flash BIOS write protect disabled	JP32	Pins 1 & 2 closed
Flash BIOS write protect enabled	JP32	Pins 2 & 3 closed
í CMOS memory normal operation	JP34	Open
CMOS memory clear	JP34	Closed

DRAM CONFIGURATION				
Size	Bank 0	Bank 1	Bank 2	Bank 3
8MB	(2) 1M x 36	None	None	None
16MB	(2) 1M x 36	(2) 1M x 36	None	None
16MB	(2) 2M x 36	None	None	None
24MB	(2) 2M x 36	(2) 1M x 36	None	None
24MB	(2) 1M x 36	(2) 1M x 36	(2) 1M x 36	None
32MB	(2) 2M x 36	(2) 1M x 36	(2) 1M x 36	None
32MB	(2) 1M x 36	(2) 1M x 36	(2) 1M x 36	(2) 1M x 36
32MB	(2) 2M x 36	(2) 2M x 36	None	None
32MB	(2) 4M x 36	None	None	None
40MB	(2) 2M x 36	(2) 1M x 36	(2) 1M x 36	(2) 1M x 36
40MB	(2) 4M x 36	(2) 1M x 36	None	None
48MB	(2) 4M x 36	(2) 1M x 36	(2) 1M x 36	None
48MB	(2) 4M x 36	(2) 2M x 36	None	None
48MB	(2) 2M x 36	(2) 2M x 36	(2) 2M x 36	None
56MB	(2) 4M x 36	(2) 1M x 36	(2) 1M x 36	(2) 1M x 36
64MB	(2) 4M x 36	(2) 2M x 36	(2) 2M x 36	None
64MB	(2) 2M x 36	(2) 2M x 36	(2) 2M x 36	(2) 2M x 36
64MB	(2) 4M x 36	(2) 4M x 36	None	None
64MB	(2) 8M x 36	None	None	None
72MB	(2) 8M x 36	(2) 1M x 36	None	None
80MB	(2) 8M x 36	(2) 1M x 36	(2) 1M x 36	None
80MB	(2) 4M x 36	(2) 2M x 36	(2) 2M x 36	(2) 2M x 36

Continued on next page...

ASUS COMPUTER INTERNATIONAL
P/E - P55T2P4D

... continued from previous page

DRAM CONFIGURATION (CON'T)				
Size	Bank 0	Bank 1	Bank 2	Bank 3
80MB	(2) 8M x 36	(2) 2M x 36	None	None
88MB	(2) 8M x 36	(2) 1M x 36	(2) 1M x 36	(2) 1M x 36
96MB	(2) 8M x 36	(2) 2M x 36	(2) 2M x 36	None
96MB	(2) 8M x 36	(2) 4M x 36	None	None
96MB	(2) 4M x 36	(2) 4M x 36	(2) 4M x 36	None
112MB	(2) 8M x 36	(2) 2M x 36	(2) 2M x 36	(2) 2M x 36
128MB	(2) 8M x 36	(2) 4M x 36	(2) 4M x 36	None
128MB	(2) 4M x 36	(2) 4M x 36	(2) 4M x 36	(2) 4M x 36
128MB	(2) 8M x 36	(2) 8M x 36	None	None
128MB	(2) 16M x 36	None	None	None
136MB	(2) 16M x 36	(2) 1M x 36	None	None
144MB	(2) 16M x 36	(2) 1M x 36	(2) 1M x 36	None
144MB	(2) 16M x 36	(2) 2M x 36	None	None
152MB	(2) 16M x 36	(2) 1M x 36	(2) 1M x 36	(2) 1M x 36
160MB	(2) 16M x 36	(2) 2M x 36	(2) 2M x 36	None
160MB	(2) 8M x 36	(2) 4M x 36	(2) 4M x 36	(2) 4M x 36
160MB	(2) 16M x 36	(2) 4M x 36	None	None
176MB	(2) 16M x 36	(2) 2M x 36	(2) 2M x 36	(2) 2M x 36
192MB	(2) 16M x 36	(2) 4M x 36	(2) 4M x 36	None
192MB	(2) 16M x 36	(2) 8M x 36	None	None
192MB	(2) 8M x 36	(2) 8M x 36	(2) 8M x 36	None
224MB	(2) 16M x 36	(2) 4M x 36	(2) 4M x 36	(2) 4M x 36
256MB	(2) 8M x 36	(2) 8M x 36	(2) 8M x 36	(2) 8M x 36
256MB	(2) 16M x 36	(2) 16M x 36	None	None
384MB	(2) 16M x 36	(2) 16M x 36	(2) 16M x 36	None
512MB	(2) 16M x 36	(2) 16M x 36	(2) 16M x 36	(2) 16M x 36

Note: Board accepts EDO memory. Board also accepts x 32 SIMMs.

CACHE CONFIGURATION	
Size	SL1
256KB	256KB module installed
512KB	512KB module installed

CACHE JUMPER CONFIGURATION	
Size	JP39
256KB	Pins 2 & 3 closed
512KB	Pins 1 & 2 closed

Continued on next page...

ASUS COMPUTER INTERNATIONAL
P/E - P55T2P4D

... continued from previous page

CPU SPEED SELECTION						
CPU speed	Clock speed	Multiplier	JP15	JP16	JP29	JP30
75MHz	50MHz	1.5x	Open	Open	2 & 3	2 & 3
90MHz	60MHz	1.5x	Open	Open	1 & 2	2 & 3
100MHz	66MHz	1.5x	Open	Open	2 & 3	1 & 2
120MHz	60MHz	2x	Open	Closed	1 & 2	2 & 3
133MHz	66MHz	2x	Open	Closed	2 & 3	1 & 2
150MHz	60MHz	2.5x	Closed	Closed	1 & 2	2 & 3
166MHz	66MHz	2.5x	Closed	Closed	2 & 3	1 & 2
180MHz	60MHz	3x	Closed	Open	1 & 2	2 & 3
200MHz	66MHz	3x	Closed	Open	2 & 3	1 & 2

Note: Pins designated should be in the closed position.

CPU TYPE SELECTION	
Type	JP18
Single CPU installed	Pins 2 & 3 closed
í Dual CPUs installed	Pins 1 & 2 closed

CPU VOLTAGE SELECTION							
Voltage	JP2	JP3	JP5	JP6	JP7	JP8	JP9
Single power (STD)	Open	Closed	Open	Open	Open	Open	Open
Single power (VRE)	Open	Closed	Open	Open	Open	Open	Open
Split power 2.5v	Open	Closed	Open	Open	Open	Closed	Closed
Split power 2.7v	Open	Closed	Open	Open	Closed	Open	Closed
Split power 2.8v	Open	Closed	Open	Open	Open	Open	Closed
Split power 2.88v	Open	Closed	Open	Closed	Open	Open	Closed

CPU VOLTAGE SELECTION (CON'T)							
Voltage	JP10	JP11	JP12	JP17	JP19	JP20	JP21
Single power (STD)	Open	Closed	Closed	1 & 2	Open	Open	Closed
Single power (VRE)	Open	Closed	Closed	1 & 2	Open	Closed	Open
Split power 2.5v	Closed	Open	Open	2 & 3	Open	Open	Open
Split power 2.7v	Closed	Open	Open	2 & 3	Open	Open	Open
Split power 2.8v	Closed	Open	Open	2 & 3	Closed	Open	Open
Split power 2.88v	Closed	Open	Open	2 & 3	Open	Open	Open

Note: Pins designated should be in the closed position.

DMA CHANNEL SELECTION		
Channel	JP26	JP27
1	Pins 1 & 2 closed	Pins 1 & 2 closed
í 3	Pins 2 & 3 closed	Pins 2 & 3 closed

Continued on next page. . .

ASUS COMPUTER INTERNATIONAL
P/E - P55T2P4D

... continued from previous page

SERIAL PORT 2 SELECTION		
Setting	JP24	JP25
Used at COM2	Pins 1 & 2 closed	Pins 1 & 2 closed
Used as IR connector	Pins 2 & 3 closed	Pins 2 & 3 closed

PCI SLOT 1 SELECTION		
Setting	JP37	JP38
í Master	Pins 2 & 3 closed	Pins 2 & 3 closed
Slave	Pins 1 & 2 closed	Pins 1 & 2 closed