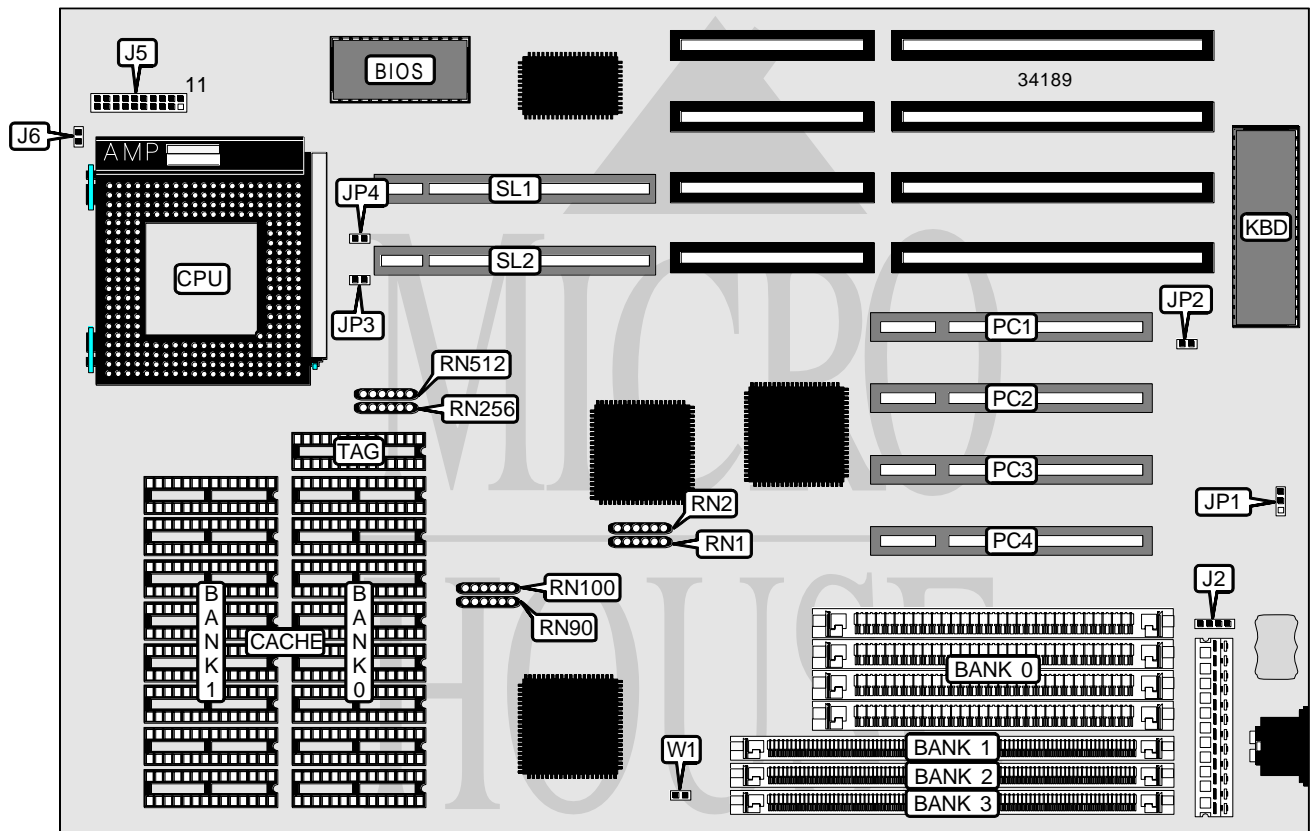


TMC RESEARCH CORPORATION

PCI54PL (VER. 1.0)

Processor	Pentium
Processor Speed	90/100MHz
Chip Set	OPTI
Video Chip Set	None
Maximum Onboard Memory	128MB
Maximum Video Memory	None
Cache	256/512KB
BIOS	Unidentified
Dimensions	330mm x 218mm
I/O Options	32-bit VESA local bus slots (2), 32-bit PCI slots (4)
NPU Options	None



CONNECTIONS			
Purpose	Location	Purpose	Location
External battery	J2	IDE interface LED	J5 pins 10 & 20
Speaker	J5 pins 1 – 4	Power LED & keylock	J5 pins 11 – 15
Turbo switch	J5 pins 7 & 17	IDE interface LED	J6
Turbo LED	J5 pins 8 & 18	32-bit PCI slots	PC1 – PC4
Reset switch	J5 pins 9 & 19	32-bit VESA local bus slots	SL1 & SL2

Continued on next page . . .

TMC RESEARCH CORPORATION
 PCI54PL (VER. 1.0)

... continued from previous page

USER CONFIGURABLE SETTINGS		
Function	Label	Position
Battery type select internal	JP1	Pins 2 & 3 closed
Battery type select external	JP1	Open
CMOS memory clear	JP1	Pins 1 & 2 closed
Monitor type select color	JP2	Closed
Monitor type select monochrome	JP2	Open
í Factory configured - do not alter	JP3	Unidentified

DRAM CONFIGURATION 1				
Size	Bank 0	Bank 1	Bank 2	Bank 3
4MB	(4) 1M x 9	None	None	None
8MB	(4) 1M x 9	None	(1) 1M x 36	None
12MB	(4) 1M x 9	None	(1) 2M x 36	None
16MB	(4) 1M x 9	None	(1) 1M x 36	(1) 2M x 36
16MB	(4) 4M x 9	None	None	None
20MB	(4) 1M x 9	None	(1) 2M x 36	(1) 2M x 36
20MB	(4) 1M x 9	None	(1) 4M x 36	None
32MB	(4) 4M x 9	None	(1) 4M x 36	None
36MB	(4) 1M x 9	None	(1) 8M x 36	None
40MB	(4) 1M x 9	None	(1) 1M x 36	(1) 8M x 36
44MB	(4) 1M x 9	None	(1) 2M x 36	(1) 8M x 36
48MB	(4) 4M x 9	None	(1) 8M x 36	None
52MB	(4) 1M x 9	None	(1) 4M x 36	(1) 8M x 36
64MB	(4) 4M x 9	None	(1) 4M x 36	(1) 8M x 36
64MB	(4) 16M x 9	None	None	None
68MB	(4) 1M x 9	None	(1) 8M x 36	(1) 8M x 36
80MB	(4) 4M x 9	None	(1) 8M x 36	(1) 8M x 36
96MB	(4) 16M x 9	None	(1) 8M x 36	None
128MB	(4) 16M x 9	None	(1) 8M x 36	(1) 8M x 36

DRAM CONFIGURATION 2				
Size	Bank 0	Bank 1	Bank 2	Bank 3
4MB	None	(1) 1M x 36	None	None
8MB	None	(1) 1M x 36	(1) 1M x 36	None
8MB	None	(1) 2M x 36	None	None
12MB	None	(1) 1M x 36	(1) 2M x 36	None
16MB	None	(1) 1M x 36	(1) 1M x 36	(1) 2M x 36
16MB	None	(1) 2M x 36	(1) 2M x 36	None
16MB	None	(1) 4M x 36	None	None
20MB	None	(1) 1M x 36	(1) 2M x 36	(1) 2M x 36
20MB	None	(1) 1M x 36	(1) 4M x 36	None
24MB	None	(1) 2M x 36	(1) 2M x 36	(1) 2M x 36
24MB	None	(1) 2M x 36	(1) 4M x 36	None

Continued on next page. . .

TMC RESEARCH CORPORATION
 PCI54PL (VER. 1.0)

... continued from previous page

DRAM CONFIGURATION (CON'T)				
Size	Bank 0	Bank 1	Bank 2	Bank 3
32MB	None	(1) 4M x 36	(1) 4M x 36	None
32MB	None	(1) 8M x 36	None	None
36MB	None	(1) 1M x 36	(1) 8M x 36	None
40MB	None	(1) 1M x 36	(1) 1M x 36	(1) 8M x 36
40MB	None	(1) 2M x 36	(1) 8M x 36	None
44MB	None	(1) 1M x 36	(1) 2M x 36	(1) 8M x 36
48MB	None	(1) 2M x 36	(1) 2M x 36	(1) 8M x 36
48MB	None	(1) 4M x 36	(1) 8M x 36	None
52MB	None	(1) 1M x 36	(1) 4M x 36	(1) 8M x 36
56MB	None	(1) 2M x 36	(1) 4M x 36	(1) 8M x 36
64MB	None	(1) 4M x 36	(1) 4M x 36	(1) 8M x 36
64MB	None	(1) 8M x 36	(1) 8M x 36	None
64MB	None	(1) 16M x 36	None	None
68MB	None	(1) 1M x 36	(1) 8M x 36	(1) 8M x 36
72MB	None	(1) 2M x 36	(1) 8M x 36	(1) 8M x 36
80MB	None	(1) 4M x 36	(1) 8M x 36	(1) 8M x 36
96MB	None	(1) 8M x 36	(1) 8M x 36	(1) 8M x 36
96MB	None	(1) 16M x 36	(1) 8M x 36	None
128MB	None	(1) 16M x 36	(1) 8M x 36	(1) 8M x 36

DRAM JUMPER CONFIGURATION		
Configuration	RN1	RN2
1	Installed	Not installed
2	Not installed	Installed

CACHE CONFIGURATION			
Size	Bank 0	Bank 1	TAG
256KB	(8) 32K x 8	None	(1) 8K/32K x 8
512KB	(8) 32K x 8	(8) 32K x 8	(1) 32K x 8

CACHE JUMPER CONFIGURATION		
Size	RN256	RN512
256KB	Installed	Not installed
512KB	Not installed	Installed

CPU SPEED SELECTION		
Speed	RN90	RN100
90MHz	Installed	Not installed
100MHz	Not installed	Installed

VL BUS WAIT STATE SELECTION		
Setting	JP4	W1
0	Open	Open
1	Closed	Closed