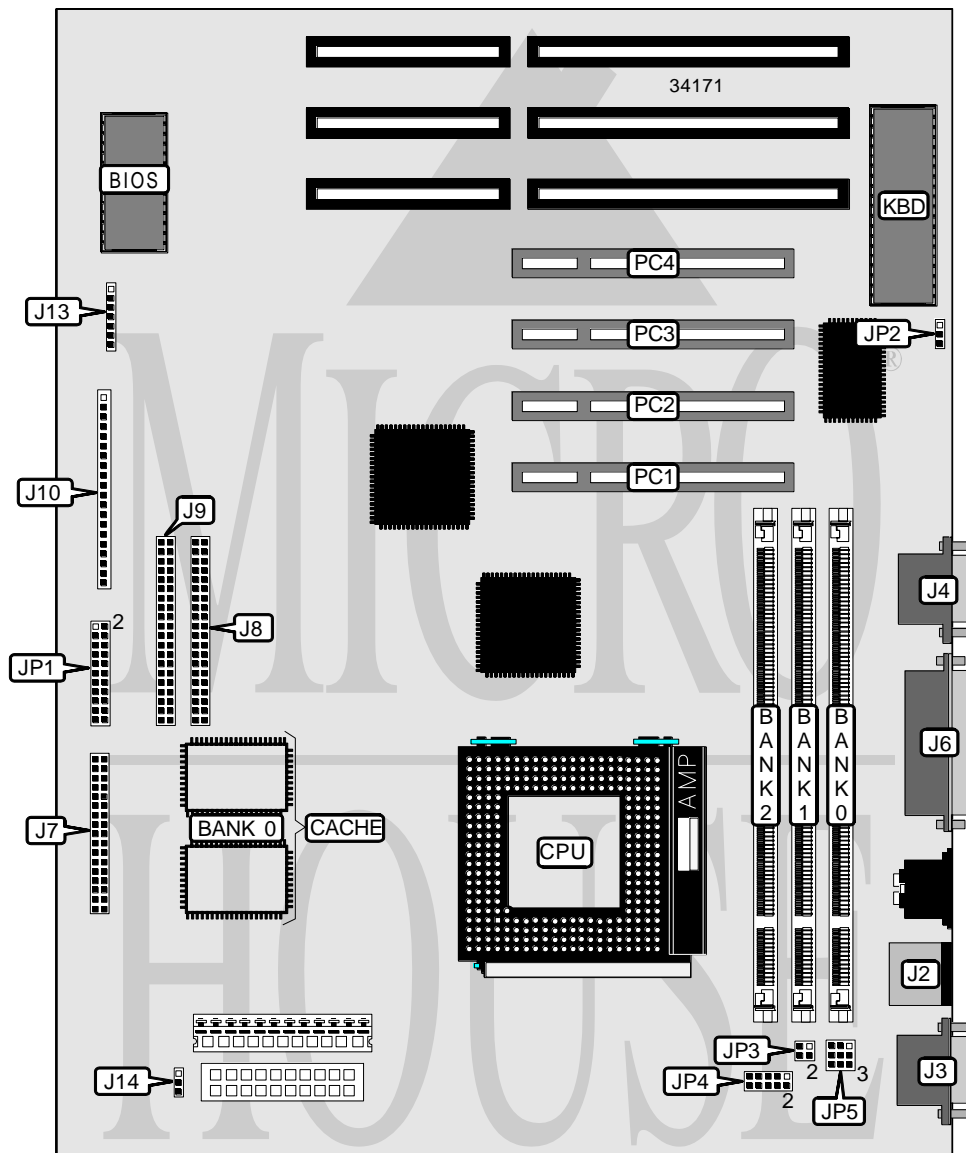


# ELITEGROUP COMPUTER SYSTEMS, INC.

## P5TX-A

<b>Processor</b>	CX M1/AM K5/Pentium
<b>Processor Speed</b>	90/100/120/133/150/166/200/233MHz
<b>Chip Set</b>	Intel
<b>Video Chip Set</b>	None
<b>Maximum Onboard Memory</b>	256MB (EDO supported)
<b>Maximum Video Memory</b>	None
<b>Cache</b>	256/512KB
<b>BIOS</b>	Award
<b>Dimensions</b>	324mm x 187mm
<b>I/O Options</b>	32-bit PCI slots (4), floppy drive interface, green PC connector, IDE interfaces (2), parallel port, PS/2 mouse port, serial ports (2), IR connector, USB connector, ATX power connector
<b>NPU Options</b>	None



Continued on next page . . .

ELITEGROUP COMPUTER SYSTEMS, INC.  
P5TX - A

... continued from previous page

CONNECTIONS			
Purpose	Location	Purpose	Location
ATX power connector	ATX	Green PC LED	J10 pins 6 - 8
PS/2 mouse port	J2	Reset switch	J10 pins 9 & 10
Serial port 1	J3	Keylock	J10 pins 11 & 12
Serial port 2	J4	Speaker	J10 pins 13 - 16
Parallel port	J6	IDE interface LED	J10 pins 17 & 18
Floppy drive interface	J7	Power on switch	J10 pins 19 & 20
IDE interface 2	J8	USB connector	J11
IDE interface 1	J9	IR connector	J13
Power LED	J10 pins 1 - 3	Chassis fan power	J14
Green PC connector	J10 pins 4 & 5	32-bit PCI slots	PC1 – PC4
Note: On some models, J13 may be labeled as J12. J12 will be a 5-pin IR connector.			

USER CONFIGURABLE SETTINGS		
Function	Label	Position
í CMOS memory normal operation	JP2	Pins 2 & 3 closed
CMOS memory clear	JP2	Pins 1 & 2 closed

DIMM CONFIGURATION			
Size	Bank 0	Bank 1	Bank 2
8MB	(1) 1M x 64	None	None
16MB	(1) 1M x 64	(1) 1M x 64	None
24MB	(1) 1M x 64	(1) 1M x 64	(1) 1M x 64
16MB	(1) 2M x 64	None	None
32MB	(1) 2M x 64	(1) 2M x 64	None
48MB	(1) 2M x 64	(1) 2M x 64	(1) 2M x 64
32MB	(1) 4M x 64	None	None
64MB	(1) 4M x 64	(1) 4M x 64	None
96MB	(1) 4M x 64	(1) 4M x 64	(1) 4M x 64
64MB	(1) 8M x 64	None	None
128MB	(1) 8M x 64	(1) 8M x 64	None
192MB	(1) 8M x 64	(1) 8M x 64	(1) 8M x 64
128MB	(1) 16M x 64	None	None
256MB	(1) 16M x 64	(1) 16M x 64	None
Note: Board accepts EDO memory.			

Continued on next page...

# ELITEGROUP COMPUTER SYSTEMS, INC.

## P5TX-A

... continued from previous page

DIMM VOLTAGE CONFIGURATION	
Voltage	JP5
3.3v	Pins 1 & 2, 4 & 5, 7 & 8 closed
5v	Pins 2 & 3, 5 & 6, 8 & 9 closed

CACHE CONFIGURATION	
Size	Bank 0
256KB	(2) 32K x 32
512KB	(2) 64K x 32

CPU SPEED SELECTION (CYRIX)			
CPU speed	Clock speed	Multiplier	JP1
133MHz	55MHz	2x	1 & 3, 4 & 6, 11 & 13, 17 & 19, 20 & 22
150MHz	60MHz	2x	1 & 3, 4 & 6, 11 & 13, 17 & 19, 18 & 20
166MHz	66MHz	2x	1 & 3, 4 & 6, 9 & 11, 17 & 19, 18 & 20
200MHz	75MHz	2x	1 & 3, 4 & 6, 9 & 11, 17 & 19, 20 & 22

Note: Pins designated should be in the closed position.

CPU SPEED SELECTION (AMD)			
CPU speed	Clock speed	Multiplier	JP1
90MHz	60MHz	1.5x	1 & 3, 2 & 4, 11 & 13, 17 & 19, 18 & 20
100MHz	66MHz	1.5x	1 & 3, 2 & 4, 9 & 11, 17 & 19, 18 & 20
120MHz	60MHz	2x	1 & 3, 4 & 6, 11 & 13, 17 & 19, 18 & 20
133MHz	66MHz	2x	1 & 3, 4 & 6, 9 & 11, 17 & 19, 18 & 20
166MHz	66MHz	2.5x	3 & 5, 4 & 6, 9 & 11, 17 & 19, 18 & 20

Note: Pins designated should be in the closed position.

CPU SPEED SELECTION (INTEL)			
CPU speed	Clock speed	Multiplier	JP1
90MHz	60MHz	1.5x	1 & 3, 2 & 4, 11 & 13, 17 & 19, 18 & 20
100MHz	66MHz	1.5x	1 & 3, 2 & 4, 9 & 11, 17 & 19, 18 & 20
120MHz	60MHz	2x	1 & 3, 4 & 6, 11 & 13, 17 & 19, 18 & 20
133MHz	66MHz	2x	1 & 3, 4 & 6, 9 & 11, 17 & 19, 18 & 20
150MHz	60MHz	2.5x	3 & 5, 4 & 6, 11 & 13, 17 & 19, 18 & 20
166MHz	66MHz	2.5x	3 & 5, 4 & 6, 9 & 11, 17 & 19, 18 & 20
200MHz	66MHz	3x	2 & 4, 3 & 5, 9 & 11, 17 & 19, 18 & 20
233MHz	66MHz	3.5x	1 & 3, 2 & 4, 9 & 11, 17 & 19, 18 & 20

Note: Pins designated should be in the closed position.

Continued on next page...

ELITEGROUP COMPUTER SYSTEMS, INC.  
P5TX-A

... continued from previous page

CPU VOLTAGE SELECTION (SINGLE)	
Voltage	JP3
3.52v	Pins 3 & 4 closed

CPU VOLTAGE SELECTION (DUAL)			
Voltage	V core	JP3	JP4
3.3v	2.5v	Pins 1 & 2 closed	Pins 1 & 2 closed
3.3v	2.8v	Pins 1 & 2 closed	Pins 3 & 4 closed
3.3v	2.9v	Pins 1 & 2 closed	Pins 5 & 6 closed
3.3v	3.3v	Pins 1 & 2 closed	Pins 9 & 10 closed