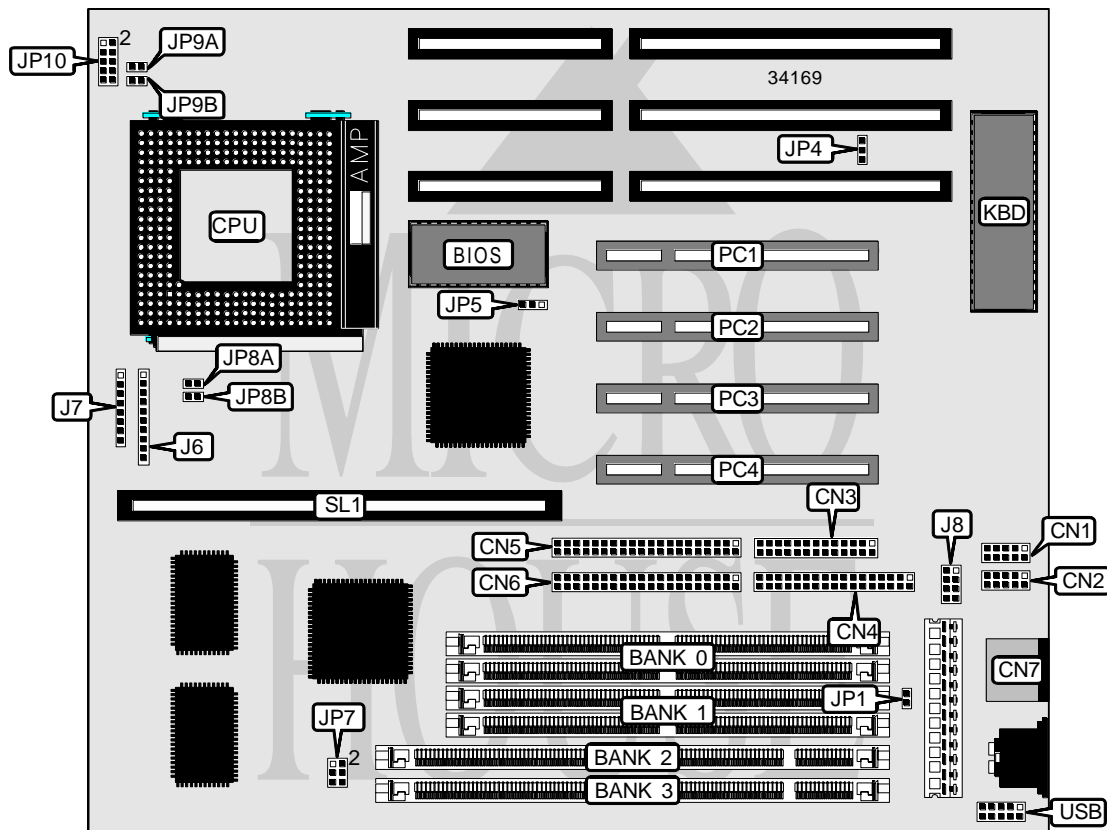


LONGBAR DEVELOPMENT, LTD.

LB - 530

Processor	CX M1/AM K5/Pentium
Processor Speed	75/90/100/120/133/150/166/180/200MHz
Chip Set	Intel
Video Chip Set	None
Maximum Onboard Memory	128MB (EDO supported)
Maximum Video Memory	None
Cache	256/512KB
BIOS	Award
Dimensions	254mm x 218mm
I/O Options	32-bit PCI slots (4), green PC connector, floppy drive interface, IDE interfaces (2), parallel port, PS/2 mouse port, PS/2 mouse interface, serial ports (2), cache slot, USB connector
NPU Options	None



Continued on next page . . .

... continued from previous page

CONNECTIONS			
Purpose	Location	Purpose	Location
Serial port 1	CN1	Reset switch	J7 pins 1 & 2
Serial port 2	CN2	IDE interface LED	J7 pins 3 & 4
Parallel port	CN3	Turbo LED	J7 pins 5 & 6
Floppy drive interface	CN4	Green PC connector	J7 pins 7 & 8
IDE interface 2	CN5	PS/2 mouse interface	J8
IDE interface 1	CN6	32-bit PCI slots	PC1 – PC4
PS/2 mouse port	CN7	Cache slot	SL1
Power LED & keylock	J6 pins 1 - 5	USB connector	USB
Speaker	J6 pins 7 - 10		

USER CONFIGURABLE SETTINGS		
Function	Label	Position
í CMOS memory normal operation	JP1	Open
CMOS memory clear	JP1	Closed
í Flash BIOS voltage select 12v	JP5	Pins 1 & 2 closed
Flash BIOS voltage select 5v	JP5	Pins 2 & 3 closed

DIMM/DRAM CONFIGURATION				
Size	Bank 0	Bank 1	Bank 2	Bank 3
8MB	(2) 1M x 36	None	None	None
8MB	None	None	(1) 1M x 64	None
16MB	(2) 2M x 36	None	None	None
16MB	None	None	(1) 2M x 64	None
16MB	(2) 1M x 36	(2) 1M x 36	None	None
16MB	(2) 1M x 36	None	None	(1) 1M x 64
16MB	None	None	(1) 1M x 64	(1) 1M x 64
24MB	None	(2) 2M x 36	(1) 1M x 64	None
32MB	(2) 4M x 36	None	None	None
32MB	None	None	(1) 4M x 64	None
32MB	(2) 2M x 36	None	None	(1) 2M x 64
32MB	None	(2) 2M x 36	(1) 2M x 64	None
40MB	(2) 4M x 36	(2) 1M x 36	None	None
40MB	(2) 4M x 36	None	None	(1) 1M x 64
48MB	(2) 2M x 36	None	None	(1) 4M x 64
48MB	(2) 4M x 36	(2) 2M x 36	None	None
48MB	(2) 4M x 36	None	None	(1) 2M x 64
64MB	(2) 8M x 36	None	None	None
64MB	None	None	None	(1) 8M x 64
64MB	(2) 4M x 36	(2) 4M x 36	None	None
64MB	(2) 4M x 36	None	None	(1) 4M x 64
64MB	None	None	(1) 4M x 64	(1) 4M x 64

Continued on next page...

... continued from previous page

DIMM/DRAM CONFIGURATION (CON'T)				
Size	Bank 0	Bank 1	Bank 2	Bank 3
72MB	(2) 8M x 36	(2) 1M x 36	None	None
72MB	(2) 8M x 36	None	None	(1) 1M x 64
80MB	None	(2) 2M x 36	(1) 8M x 64	None
80MB	(2) 2M x 36	None	None	(1) 8M x 64
80MB	(2) 8M x 36	(2) 2M x 36	None	None
80MB	(2) 8M x 36	None	None	(1) 2M x 64
96MB	(2) 4M x 36	None	None	(1) 8M x 64
96MB	(2) 8M x 36	(2) 4M x 36	None	None
96MB	(2) 8M x 36	None	None	(1) 4M x 64
128MB	None	None	(1) 8M x 64	(1) 8M x 64
128MB	(2) 8M x 36	(2) 8M x 36	None	None
128MB	(2) 8M x 36	None	None	(1) 8M x 64

Note: Board accepts EDO memory. Banks 0 & 1 and banks 2 & 3 are interchangeable.

DIMM VOLTAGE CONFIGURATION	
Voltage	JP7
3.3v	Pins 3 & 5, 4 & 6 closed
5v	Pins 1 & 3, 2 & 4 closed

CACHE CONFIGURATION		
Size	SL1	TAG
256KB	256KB module installed	(1) 8K/16K/32K x 8
512KB	512KB module installed	(1) 16K/32K x 8

CPU SPEED SELECTION (CYRIX)							
CPU speed	Clock speed	Multiplier	JP4	JP8A	JP8B	JP9A	JP9B
120MHz	50MHz	2x	2 & 3	Closed	Closed	Closed	Open
133MHz	55MHz	2x	N/A	Open	Open	Closed	Open
150MHz	60MHz	2x	1 & 2	Open	Closed	Closed	Open
166MHz	66MHz	2x	1 & 2	Closed	Open	Closed	Open

Note: Pins designated should be in the closed position.

CPU SPEED SELECTION (AMD)							
CPU speed	Clock speed	Multiplier	JP4	JP8A	JP8B	JP9A	JP9B
75MHz	50MHz	1.5x	2 & 3	Closed	Closed	Open	Open
90MHz	60MHz	1.5x	1 & 2	Open	Closed	Open	Open
100MHz	66MHz	1.5x	1 & 2	Closed	Open	Open	Open

Note: Pins designated should be in the closed position.

Continued on next page...

... continued from previous page

CPU SPEED SELECTION (INTEL)							
CPU speed	Clock speed	Multiplier	JP4	JP8A	JP8B	JP9A	JP9B
75MHz	50MHz	1.5x	2 & 3	Closed	Closed	Open	Open
90MHz	60MHz	1.5x	1 & 2	Open	Closed	Open	Open
100MHz	66MHz	1.5x	1 & 2	Closed	Open	Open	Open
120MHz	60MHz	2x	1 & 2	Open	Closed	Closed	Open
133MHz	66MHz	2x	1 & 2	Closed	Open	Closed	Open
150MHz	60MHz	2.5x	1 & 2	Open	Closed	Closed	Closed
166MHz	66MHz	2.5x	1 & 2	Closed	Open	Closed	Closed
180MHz	60MHz	3x	1 & 2	Open	Closed	Open	Closed
200MHz	66MHz	3x	1 & 2	Closed	Open	Open	Closed

Note: Pins designated should be in the closed position.

CPU VOLTAGE SELECTION	
Voltage	JP10
2.7v	Pins 7 & 8 closed
2.8v	Pins 5 & 6 closed
2.9v	Pins 3 & 4 closed
3.3v	Pins 9 & 10 closed
3.5v	Pins 1 & 2 closed