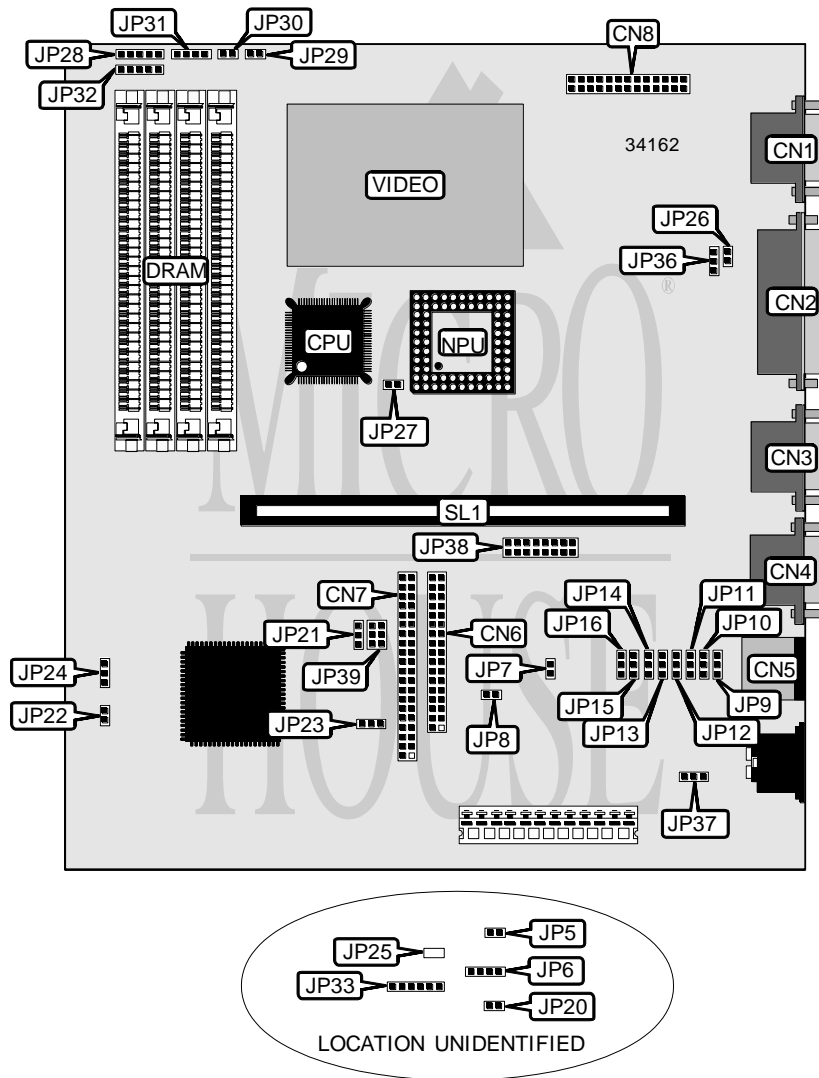


FORCOM TECHNOLOGY CORPORATION

FT - 3 8 6 W L

Processor	80386SX/CX486SLC
Processor Speed	25/33/40MHz
Chip Set	ALI
Video Chip Set	Cirrus Logic
Maximum Onboard Memory	16MB
Maximum Video Memory	1MB
Cache	None
BIOS	AMI
Dimensions	223mm x 203mm
I/O Options	Floppy drive interface, IDE interface, parallel port, PS/2 mouse port, serial ports (2), VGA feature connector, VGA port, riser slot
NPU Options	80387SX



Continued on next page. . .

FORCOM TECHNOLOGY CORPORATION

FT - 3 8 6 W L

... continued from previous page

CONNECTIONS			
Purpose	Location	Purpose	Location
VGA port	CN1	Turbo LED	JP28 pins 1 & 2
Parallel port	CN2	Turbo switch	JP28 pins 4 & 5
Serial port 2	CN3	IDE interface LED	JP29
Serial port 1	CN4	Reset switch	JP30
PS/2 mouse port	CN5	Speaker	JP31
Floppy drive interface	CN6	Power LED & keylock	JP32
IDE interface	CN7	LED connector	JP33
VGA feature connector	CN8	Riser slot	SL1
External battery	JP6		

USER CONFIGURABLE SETTINGS		
Function	Label	Position
Monitor type select color	JP5	Open
Monitor type select monochrome	JP5	Closed
í CMOS memory normal operation	JP7	Open
CMOS memory clear	JP7	Closed
PS/2 mouse disabled	JP8	Open
PS/2 mouse enabled	JP8	Closed
Floppy drive interface enabled	JP15	Pins 1 & 2 closed
Floppy drive interface disabled	JP15	Pins 2 & 3 closed
IDE interface enabled	JP16	Pins 1 & 2 closed
IDE interface disabled	JP16	Pins 2 & 3 closed
RTC type select 146818	JP20	Open
RTC type select Dallas	JP20	Closed
Parity enabled	JP22	Open
Parity disabled	JP22	Closed
Pipeline mode enabled	JP23	Pins 1 & 2 closed
Pipeline mode disabled	JP23	Pins 2 & 3 closed
í Factory configured - do not alter	JP25	Unidentified
IRQ9 enabled	JP26	Closed
IRQ9 disabled	JP26	Open
NPU synchronous with CPU	JP27	Pins 1 & 2 closed
NPU asynchronous with CPU	JP27	Pins 2 & 3 closed
On board video enabled	JP36	Pins 1 & 2 closed
On board video disabled	JP36	Pins 2 & 3 closed
Power good signal detect from power supply	JP37	Pins 1 & 2 closed
Power good signal detect from board	JP37	Pins 2 & 3 closed

Continued on next page. . .

FORCOM TECHNOLOGY CORPORATION

FT - 3 8 6 W L

... continued from previous page

DRAM CONFIGURATION		
Size	Bank 0	Bank 1
512KB	(2) 256K x 9	None
1MB	(2) 256K x 9	(2) 256K x 9
2MB	(2) 1M x 9	None
4MB	(2) 1M x 9	(2) 1M x 9
8MB	(2) 4M x 9	None
16MB	(2) 4M x 9	(2) 4M x 9

Note: The location of banks 0 & 1 is unidentified.

VIDEO MEMORY CONFIGURATION
Note: Board accepts 256KB/512KB/1MB video memory. The size of the chips is unidentified.

CPU SPEED SELECTION			
Speed	JP21	JP24	JP39
25MHz	1 & 2	2 & 3	1 & 2, 5 & 6
33MHz	2 & 3	2 & 3	1 & 2, 3 & 4
40MHz	1 & 2	1 & 2	5 & 6

Note: Pins designated should be in the closed position.

PARALLEL PORT ADDRESS SELECTION		
Setting	JP9	JP10
278h	Pins 2 & 3 closed	Pins 2 & 3 closed
378h	Pins 1 & 2 closed	Pins 1 & 2 closed
3BCh	Pins 1 & 2 closed	Pins 2 & 3 closed
Disabled	Pins 2 & 3 closed	Pins 1 & 2 closed

SERIAL PORT 1 ADDRESS SELECTION		
Setting	JP11	JP12
2E8h	Pins 1 & 2 closed	Pins 2 & 3 closed
3E8h	Pins 2 & 3 closed	Pins 2 & 3 closed
3F8h	Pins 1 & 2 closed	Pins 1 & 2 closed
Disabled	Pins 2 & 3 closed	Pins 1 & 2 closed

SERIAL PORT 2 ADDRESS SELECTION		
Setting	JP13	JP14
2E8h	Pins 1 & 2 closed	Pins 2 & 3 closed
3E8h	Pins 1 & 2 closed	Pins 1 & 2 closed
3F8h	Pins 2 & 3 closed	Pins 2 & 3 closed
Disabled	Pins 2 & 3 closed	Pins 1 & 2 closed

Continued on next page. . .

FORCOM TECHNOLOGY CORPORATION
FT - 3 8 6 W L*... continued from previous page*

SERIAL PORT 1 INTERRUPT SELECTION	
IRQ	JP38
IRQ3	Pins 1 & 2 closed
IRQ4	Pins 3 & 4 closed
IRQ5	Pins 5 & 6 closed

SERIAL PORT 2 INTERRUPT SELECTION	
IRQ	JP38
IRQ3	Pins 7 & 8 closed
IRQ4	Pins 9 & 10 closed
IRQ5	Pins 11 & 12 closed

PARALLEL PORT INTERRUPT SELECTION	
IRQ	JP38
IRQ5	Pins 13 & 14 closed
IRQ7	Pins 15 & 16 closed