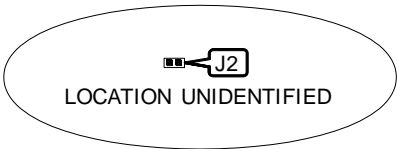
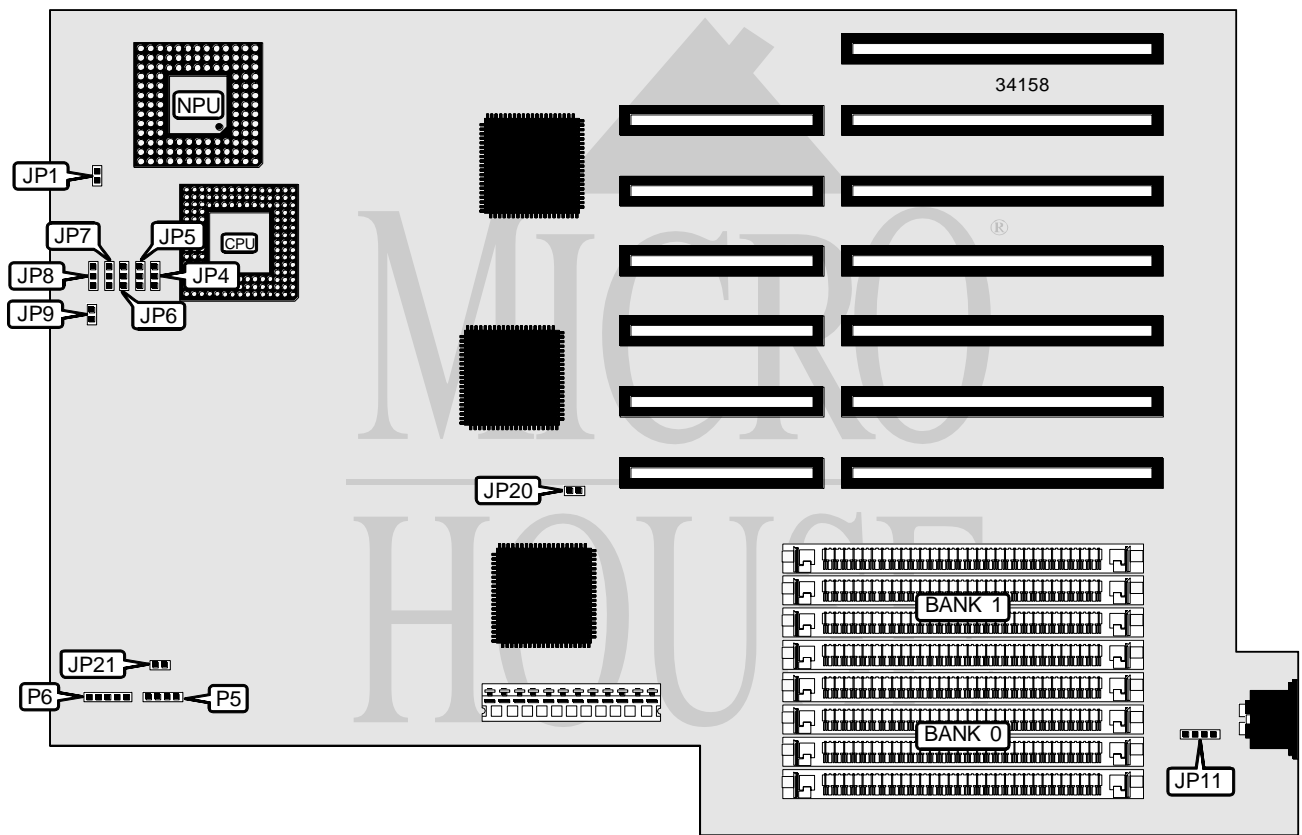


RINGO TECHNOLOGY, INC.

RT386DX

Processor	AM386DX
Processor Speed	40MHz
Chip Set	OPTI
Video Chip Set	None
Maximum Onboard Memory	32MB
Maximum Video Memory	None
Cache	64KB
BIOS	AMI
Dimensions	330mm x 218mm
I/O Options	None
NPU Options	80387/3167/CX387



CONNECTIONS			
Purpose	Location	Purpose	Location
External battery	JP11	Power LED & keylock	P6
Speaker	P5		

Continued on next page. . .

RINGO TECHNOLOGY, INC.
RT386DX

... continued from previous page

USER CONFIGURABLE SETTINGS		
Function	Label	Position
í Factory configured - do not alter	J2	Open
í NPU asynchronous with CPU	JP1	Closed
NPU synchronous with CPU	JP1	Open
í Factory configured - do not alter	JP4	Pins 2 & 3 closed
í Factory configured - do not alter	JP5	Pins 1 & 2 closed
í Factory configured - do not alter	JP6	Pins 1 & 2 closed
í Factory configured - do not alter	JP7	Pins 1 & 2 closed
í Factory configured - do not alter	JP8	Pins 2 & 3 closed
í Factory configured - do not alter	JP9	Open
í Battery type select internal	JP11	Pins 2 & 3 closed
Battery type select Vectra battery	JP11	Open
CMOS memory clear	JP11	Pins 3 & 4 closed
í AT bus clock speed select 10MHz	JP20	Closed
AT bus clock speed select 13.3MHz	JP20	Open
í Monitor type select color/EGA/VGA	JP21	Closed
Monitor type select monochrome	JP21	Open

DRAM CONFIGURATION		
Size	Bank 0	Bank 1
4MB	(4) 1M x 9	None
8MB	(4) 1M x 9	(4) 1M x 9
16MB	(4) 4M x 9	None
20MB	(4) 1M x 9	(4) 4M x 9
20MB	(4) 4M x 9	(4) 1M x 9
32MB	(4) 4M x 9	(4) 4M x 9

CACHE CONFIGURATION
Note: The location of the 64KB cache is unidentified.