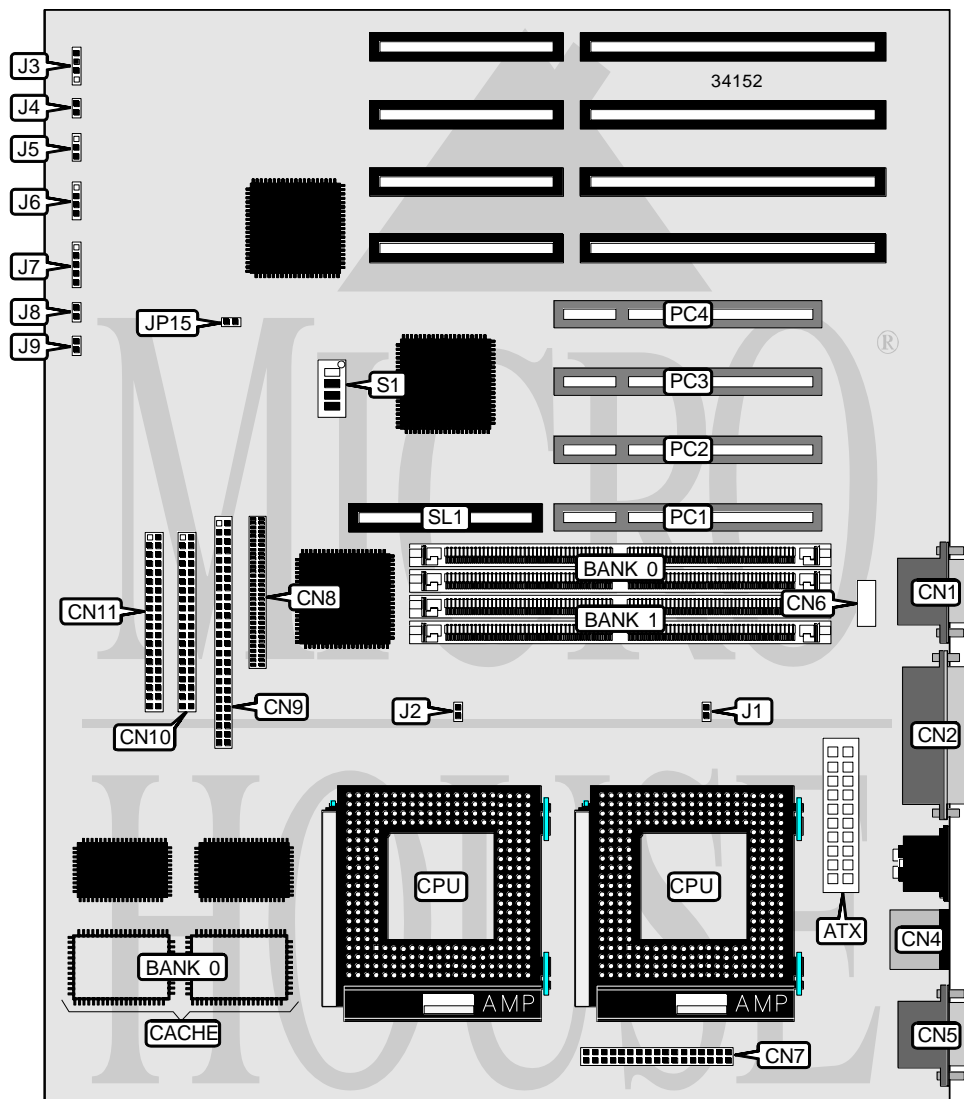


GIGA-BYTE TECHNOLOGY CO., LTD.

GA - 5 8 6 D X

Processor	CX M1/AM K5/Pentium
Processor Speed	75/90/100/120/125/133/150/166/180/200MHz
Chip Set	Unidentified
Video Chip Set	None
Maximum Onboard Memory	512MB (EDO supported)
Maximum Video Memory	None
Cache	512KB
BIOS	Award
Dimensions	305mm x 244mm
I/O Options	32-bit PCI slots (4), floppy drive interface, green PC connector, IDE interfaces (2), Ultra SCSI interface, Ultra Wide SCSI interface, parallel port, PS/2 mouse port, serial ports (2), IR connector, USB connector, ATX power connector, RAID slot
NPU Options	None



Continued on next page . . .

GIGA-BYTE TECHNOLOGY CO., LTD.
GA - 5 8 6 D X

... continued from previous page

CONNECTIONS			
Purpose	Location	Purpose	Location
ATX power connector	ATX	Chassis fan power	J1
Serial port 2	CN1	Chassis fan power	J2
Parallel port	CN2	Speaker	J3
PS/2 mouse port	CN4	Reset switch	J4
Serial port 1	CN5	Power LED	J5
USB connector	CN6	IDE interface LED	J6
Floppy drive interface	CN7	IR connector	J7
Ultra Wide SCSI interface	CN8	Green PC connector	J8
Ultra SCSI interface	CN9	Green PC LED	J9
IDE interface 1	CN10	32-bit PCI slots	PC1 – PC4
IDE interface 2	CN11	RAID slot	SL1

USER CONFIGURABLE SETTINGS		
Function	Label	Position
High byte termination always enabled	JP15	Open
High byte termination controlled by software	JP15	Closed

DRAM CONFIGURATION		
Size	Bank 0	Bank 1
8MB	(2) 1M x 36	None
16MB	(2) 2M x 36	None
16MB	(2) 1M x 36	(2) 1M x 36
24MB	(2) 2M x 36	(2) 1M x 36
32MB	(2) 4M x 36	None
32MB	(2) 2M x 36	(2) 2M x 36
40MB	(2) 4M x 36	(2) 1M x 36
48MB	(2) 4M x 36	(2) 2M x 36
64MB	(2) 8M x 36	None
64MB	(2) 4M x 36	(2) 4M x 36
72MB	(2) 8M x 36	(2) 1M x 36
80MB	(2) 8M x 36	(2) 2M x 36
96MB	(2) 8M x 36	(2) 4M x 36
128MB	(2) 8M x 36	(2) 8M x 36
128MB	(2) 16M x 36	None
136MB	(2) 16M x 36	(2) 1M x 36
144MB	(2) 16M x 36	(2) 2M x 36
160MB	(2) 16M x 36	(2) 4M x 36
192MB	(2) 16M x 36	(2) 8M x 36
256MB	(2) 16M x 36	(2) 16M x 36
256MB	(2) 32M x 36	None

Continued on next page...

GIGA-BYTE TECHNOLOGY CO., LTD.

GA - 5 8 6 D X

... continued from previous page

DRAM CONFIGURATION (CON'T)		
Size	Bank 0	Bank 1
264MB	(2) 32M x 36	(2) 1M x 36
272MB	(2) 32M x 36	(2) 2M x 36
288MB	(2) 32M x 36	(2) 4M x 36
320MB	(2) 32M x 36	(2) 8M x 36
384MB	(2) 32M x 36	(2) 16M x 36
512MB	(2) 32M x 36	(2) 32M x 36

Note: Board accepts EDO memory.

CACHE CONFIGURATION	
Size	Bank 0
512KB	(2) 64K x 32

CPU SPEED SELECTION (CYRIX)						
CPU speed	Clock speed	Multiplier	S1/1	S1/2	S1/3	S1/4
120MHz	50MHz	2x	On	On	Off	On
133MHz	55MHz	2x	Off	Off	Off	On
150MHz	60MHz	2x	On	Off	Off	On
166MHz	66MHz	2x	Off	On	Off	On

CPU SPEED SELECTION (AMD)						
CPU speed	Clock speed	Multiplier	S1/1	S1/2	S1/3	S1/4
75MHz	50MHz	1.5x	On	On	Off	Off
90MHz	60MHz	1.5x	On	Off	Off	Off
100MHz	66MHz	1.5x	Off	On	Off	Off
120MHz	60MHz	1.5x	On	Off	Off	Off
133MHz	66MHz	1.5x	Off	On	Off	Off
150MHz	60MHz	2x	On	Off	Off	On
166MHz	66MHz	2x	Off	On	Off	On

CPU SPEED SELECTION (INTEL)						
CPU speed	Clock speed	Multiplier	S1/1	S1/2	S1/3	S1/4
75MHz	50MHz	1.5x	On	On	Off	Off
90MHz	60MHz	1.5x	On	Off	Off	Off
100MHz	66MHz	1.5x	Off	On	Off	Off
120MHz	60MHz	2x	On	Off	Off	On
125MHz	50MHz	2.5x	On	On	On	On
133MHz	66MHz	2x	Off	On	Off	On
150MHz	60MHz	2.5x	On	Off	On	On
166MHz	66MHz	2.5x	Off	On	On	On
180MHz	60MHz	3x	On	Off	On	Off
200MHz	66MHz	3x	Off	On	On	Off