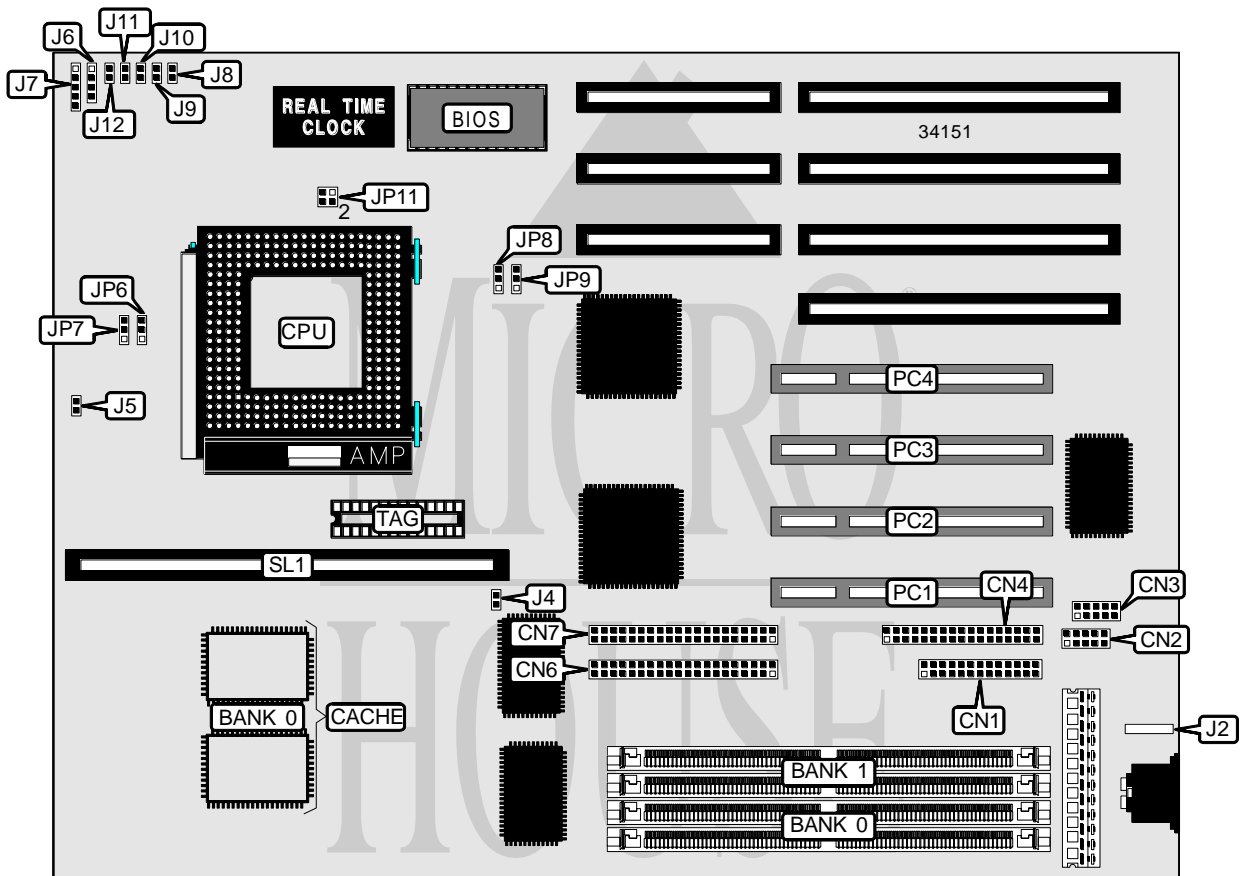


GIGA-BYTE TECHNOLOGY CO., LTD.

GA - 5 8 6 A T V

Processor	CX M1/AM K5/Pentium
Processor Speed	75/90/100/120/125/133/150/166/180/200MHz
Chip Set	Unidentified
Video Chip Set	None
Maximum Onboard Memory	128MB (EDO supported)
Maximum Video Memory	None
Cache	256/512KB
BIOS	Award
Dimensions	330mm x 218mm
I/O Options	32-bit PCI slots (2), floppy drive interface, green PC connector, IDE interfaces (2), parallel port, PS/2 mouse interface, serial ports (2), cache slot
NPU Options	None



Continued on next page . . .

GIGA-BYTE TECHNOLOGY CO., LTD.

GA - 5 8 6 A T V

... continued from previous page

CONNECTIONS			
Purpose	Location	Purpose	Location
Parallel port	CN1	Speaker	J6
Serial port 1	CN2	Power LED & keylock	J7
Serial port 2	CN3	Green PC connector	J8
Floppy drive interface	CN4	Green PC LED	J9
IDE interface 1	CN6	Reset switch	J10
IDE interface 2	CN7	Turbo switch	J11
PS/2 mouse interface	J2	Turbo LED	J12
IDE interface LED	J4	32-bit PCI slots	PC1 – PC4
Chassis fan power	J5	Cache slot	SL1

DRAM CONFIGURATION		
Size	Bank 0	Bank 1
8MB	(2) 1M x 36	None
16MB	(2) 2M x 36	None
16MB	(2) 1M x 36	(2) 1M x 36
24MB	(2) 2M x 36	(2) 1M x 36
32MB	(2) 4M x 36	None
32MB	(2) 2M x 36	(2) 2M x 36
40MB	(2) 4M x 36	(2) 1M x 36
48MB	(2) 4M x 36	(2) 2M x 36
64MB	(2) 8M x 36	None
64MB	(2) 4M x 36	(2) 4M x 36
72MB	(2) 8M x 36	(2) 1M x 36
80MB	(2) 8M x 36	(2) 2M x 36
96MB	(2) 8M x 36	(2) 4M x 36
128MB	(2) 8M x 36	(2) 8M x 36

Note: Board accepts EDO memory.

CACHE CONFIGURATION			
Size	Bank 0	SL1	TAG
256KB	(2) 32K x 32	Not installed	(1) 16K x 8
512KB	(2) 64K x 32	Not installed	(1) 16K x 8
512KB	(2) 32K x 32	256KB module installed	None

CPU SPEED SELECTION (CYRIX)					
CPU speed	Clock speed	Multiplier	JP8	JP9	JP11
120MHz	50MHz	2x	1 & 2	1 & 2	1 & 2
133MHz	55MHz	2x	2 & 3	2 & 3	Open
150MHz	60MHz	2x	1 & 2	2 & 3	1 & 2
166MHz	66MHz	2x	2 & 3	1 & 2	1 & 2

Note: Pins designated should be in the closed position.

Continued on next page...

GIGA-BYTE TECHNOLOGY CO., LTD.

GA-586ATV

... continued from previous page

CPU SPEED SELECTION (AMD)					
CPU speed	Clock speed	Multiplier	JP8	JP9	JP11
75MHz	50MHz	1.5x	1 & 2	1 & 2	Open
90MHz	60MHz	1.5x	1 & 2	2 & 3	Open
100MHz	66MHz	1.5x	2 & 3	1 & 2	Open
120MHz	60MHz	1.5x	1 & 2	2 & 3	Open
133MHz	66MHz	1.5x	2 & 3	1 & 2	Open
150MHz	60MHz	2x	1 & 2	2 & 3	1 & 2
166MHz	66MHz	2x	2 & 3	1 & 2	1 & 2

Note: Pins designated should be in the closed position.

CPU SPEED SELECTION (INTEL)					
CPU speed	Clock speed	Multiplier	JP8	JP9	JP11
75MHz	50MHz	1.5x	1 & 2	1 & 2	Open
90MHz	60MHz	1.5x	1 & 2	2 & 3	Open
100MHz	66MHz	1.5x	2 & 3	1 & 2	Open
120MHz	60MHz	2x	1 & 2	2 & 3	1 & 2
125MHz	50MHz	2.5x	1 & 2	1 & 2	1 & 2, 3 & 4
133MHz	66MHz	2x	2 & 3	1 & 2	1 & 2
150MHz	60MHz	2.5x	1 & 2	2 & 3	1 & 2, 3 & 4
166MHz	66MHz	2.5x	2 & 3	1 & 2	1 & 2, 3 & 4
180MHz	60MHz	3x	1 & 2	2 & 3	3 & 4
200MHz	66MHz	3x	2 & 3	1 & 2	3 & 4

Note: Pins designated should be in the closed position.

CPU VOLTAGE SELECTION (SINGLE)		
Voltage	JP6	JP7
3.3v	Pins 1 & 2 closed	Pins 1 & 2 closed

CPU VOLTAGE SELECTION (DUAL)			
Voltage	V core	JP6	JP7
3.3v	2.8v	Pins 2 & 3 closed	Pins 2 & 3 closed