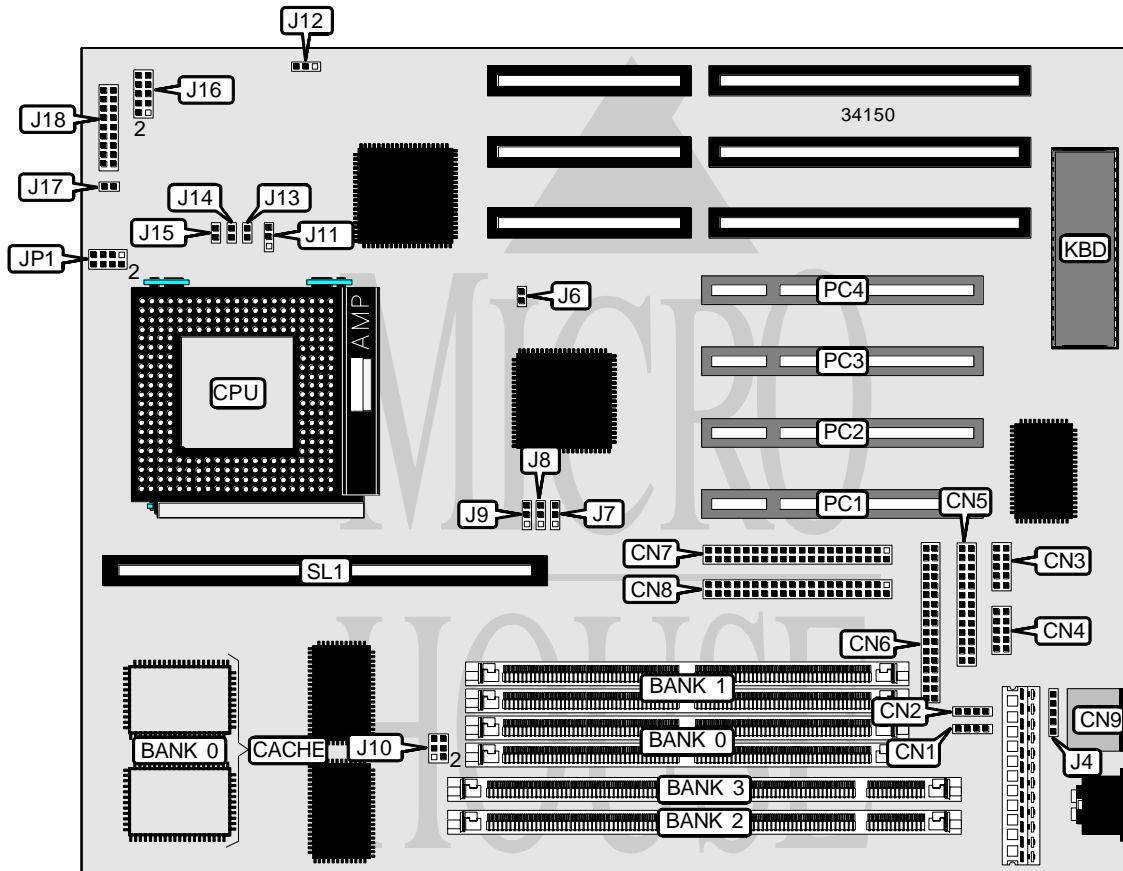


FONG KAI INDUSTRIAL, INC. SL586V-PLUS

Processor	CX M1/AM K5/Pentium
Processor Speed	75/90/100/120/133/150/166/200MHz
Chip Set	Intel
Video Chip Set	None
Maximum Onboard Memory	128MB (EDO supported)
Maximum Video Memory	None
Cache	256/512KB
BIOS	Award
Dimensions	280mm x 220mm
I/O Options	32-bit PCI slots (4), floppy drive interface, green PC connector, IDE interfaces (2), parallel port, PS/2 mouse port, PS/2 mouse interface, serial ports (2), cache slot, IR connector, USB connectors (2)
NPU Options	None



Continued on next page . . .

FONG KAI INDUSTRIAL, INC.

SL586V-PLUS

... continued from previous page

CONNECTIONS			
Purpose	Location	Purpose	Location
USB connector	CN1	IR connector	J16
USB connector	CN2	Power LED & keylock	J18 pins 1 - 5
Serial port 2	CN3	IDE interface LED	J18 pins 6 & 13
Serial port 1	CN4	Green PC connector	J18 pins 7 & 12
Parallel port	CN5	Reset switch	J18 pins 8 & 11
Floppy drive interface	CN6	Turbo LED	J18 pins 9 & 10
IDE interface 2	CN7	Speaker	J18 pins 15 - 18
IDE interface 1	CN8	32-bit PCI slots	PC1 - PC4
PS/2 mouse port	CN9	Cache slot	SL1
PS/2 mouse interface	J4		

USER CONFIGURABLE SETTINGS		
Function	Label	Position
í Factory configured - do not alter	J6	Unidentified
Flash BIOS voltage select 12v	J12	Pins 1 & 2 closed
Flash BIOS voltage select 5v	J12	Pins 2 & 3 closed
í CMOS memory normal operation	J17	Open
CMOS memory clear	J17	Closed

DIMM/DRAM CONFIGURATION				
Size	Bank 0	Bank 1	Bank 2	Bank 3
8MB	(2) 1M x 36	None	None	None
8MB	None	None	(1) 1M x 64	None
16MB	(2) 2M x 36	None	None	None
16MB	None	None	(1) 2M x 64	None
16MB	(2) 1M x 36	(2) 1M x 36	None	None
16MB	(2) 1M x 36	None	None	(1) 1M x 64
24MB	None	(2) 2M x 36	(1) 1M x 64	None
32MB	(2) 4M x 36	None	None	None
32MB	None	None	(1) 4M x 64	None
32MB	(2) 2M x 36	None	None	(1) 2M x 64
32MB	None	(2) 2M x 36	(1) 2M x 64	None
40MB	(2) 4M x 36	(2) 1M x 36	None	None
40MB	(2) 4M x 36	None	None	(1) 1M x 64
48MB	(2) 2M x 36	None	None	(1) 4M x 64
48MB	(2) 4M x 36	(2) 2M x 36	None	None
48MB	(2) 4M x 36	None	None	(1) 2M x 64
64MB	(2) 8M x 36	None	None	None
64MB	None	None	None	(1) 8M x 64
64MB	(2) 4M x 36	(2) 4M x 36	None	None
64MB	(2) 4M x 36	None	None	(1) 4M x 64

Continued on next page. . .

FONG KAI INDUSTRIAL, INC.

SL586V-PLUS

... continued from previous page

DIMM/DRAM CONFIGURATION (CON'T)				
Size	Bank 0	Bank 1	Bank 2	Bank 3
64MB	None	(2) 4M x 36	(1) 4M x 64	None
72MB	(2) 8M x 36	(2) 1M x 36	None	None
72MB	(2) 8M x 36	None	None	(1) 1M x 64
80MB	None	(2) 2M x 36	(1) 8M x 64	None
80MB	(2) 2M x 36	None	None	(1) 8M x 64
80MB	(2) 8M x 36	(2) 2M x 36	None	None
80MB	(2) 8M x 36	None	None	(1) 2M x 64
96MB	(2) 4M x 36	None	None	(1) 8M x 64
96MB	(2) 8M x 36	(2) 4M x 36	None	None
96MB	(2) 8M x 36	None	None	(1) 4M x 64
96MB	None	(2) 8M x 36	(1) 4M x 64	None
128MB	(2) 8M x 36	(2) 8M x 36	None	None
128MB	(2) 8M x 36	None	None	(1) 8M x 64

Note: Board accepts EDO memory.

DRAM VOLTAGE CONFIGURATION	
Voltage	J10
3.3v	Pins 1 & 3, 2 & 4 closed
5v	Pins 3 & 5, 4 & 6 closed

CACHE CONFIGURATION			
Size	Bank 0	SL1	TAG
256KB	(2) 32K x 32	Not installed	(1) 8K x 8
256KB	None	256KB module installed	None
512KB	(2) 32K x 32	256KB module installed	(1) 16K x 8
512KB	(2) 64K x 32	Not installed	(1) 16K x 8
512KB	None	512KB module installed	None

Note: The location of the TAG is unidentified.

CPU SPEED SELECTION (CYRIX)						
CPU speed	Clock speed	Multiplier	J7	J8	J9	J11
120MHz	50MHz	2x	1 & 2	1 & 2	1 & 2	2 & 3
133MHz	55MHz	2x	1 & 2	1 & 2	2 & 3	2 & 3
150MHz	60MHz	2x	2 & 3	1 & 2	1 & 2	1 & 2
166MHz	66MHz	2x	1 & 2	2 & 3	1 & 2	2 & 3

Note: Pins designated should be in the closed position.

CPU SPEED SELECTION (CYRIX, CON'T)					
CPU speed	Clock speed	Multiplier	J13	J14	J15
120MHz	50MHz	2x	Open	Closed	Open
133MHz	55MHz	2x	Open	Closed	Open
150MHz	60MHz	2x	Open	Closed	Open
166MHz	66MHz	2x	Open	Closed	Open

Continued on next page. . .

FONG KAI INDUSTRIAL, INC.

SL586V-PLUS

... continued from previous page

CPU SPEED SELECTION (AMD)						
CPU speed	Clock speed	Multiplier	J7	J8	J9	J11
75MHz	50MHz	1.5x	1 & 2	1 & 2	1 & 2	2 & 3
90MHz	60MHz	1.5x	2 & 3	1 & 2	1 & 2	1 & 2
100MHz	66MHz	1.5x	1 & 2	2 & 3	1 & 2	1 & 2

Note: Pins designated should be in the closed position.

CPU SPEED SELECTION (AMD, CON'T)					
CPU speed	Clock speed	Multiplier	J13	J14	J15
75MHz	50MHz	1.5x	Open	Open	Open
90MHz	60MHz	1.5x	Open	Open	Open
100MHz	66MHz	1.5x	Open	Open	Open

CPU SPEED SELECTION (INTEL)						
CPU speed	Clock speed	Multiplier	J7	J8	J9	J11
75MHz	50MHz	1.5x	1 & 2	1 & 2	1 & 2	2 & 3
90MHz	60MHz	1.5x	2 & 3	1 & 2	1 & 2	1 & 2
100MHz	66MHz	1.5x	1 & 2	2 & 3	1 & 2	2 & 3
120MHz	60MHz	2x	2 & 3	1 & 2	1 & 2	1 & 2
133MHz	66MHz	2x	1 & 2	2 & 3	1 & 2	2 & 3
150MHz	60MHz	2.5x	2 & 3	1 & 2	1 & 2	1 & 2
166MHz	66MHz	2.5x	1 & 2	2 & 3	1 & 2	2 & 3
200MHz	66MHz	3x	1 & 2	2 & 3	1 & 2	2 & 3

Note: Pins designated should be in the closed position.

CPU SPEED SELECTION (INTEL, CON'T)					
CPU speed	Clock speed	Multiplier	J13	J14	J15
75MHz	50MHz	1.5x	Open	Open	Open
90MHz	60MHz	1.5x	Open	Open	Open
100MHz	66MHz	1.5x	Open	Open	Open
120MHz	60MHz	2x	Open	Closed	Open
133MHz	66MHz	2x	Open	Closed	Open
150MHz	60MHz	2.5x	Closed	Closed	Open
166MHz	66MHz	2.5x	Closed	Closed	Open
200MHz	66MHz	3x	Closed	Open	Open

CPU VOLTAGE SELECTION	
Voltage	JP1
2.8v	Pins 7 & 8 closed
3.3v	Pins 5 & 6 closed
3.45v	Pins 3 & 4 closed
3.6v	Pins 1 & 2 closed