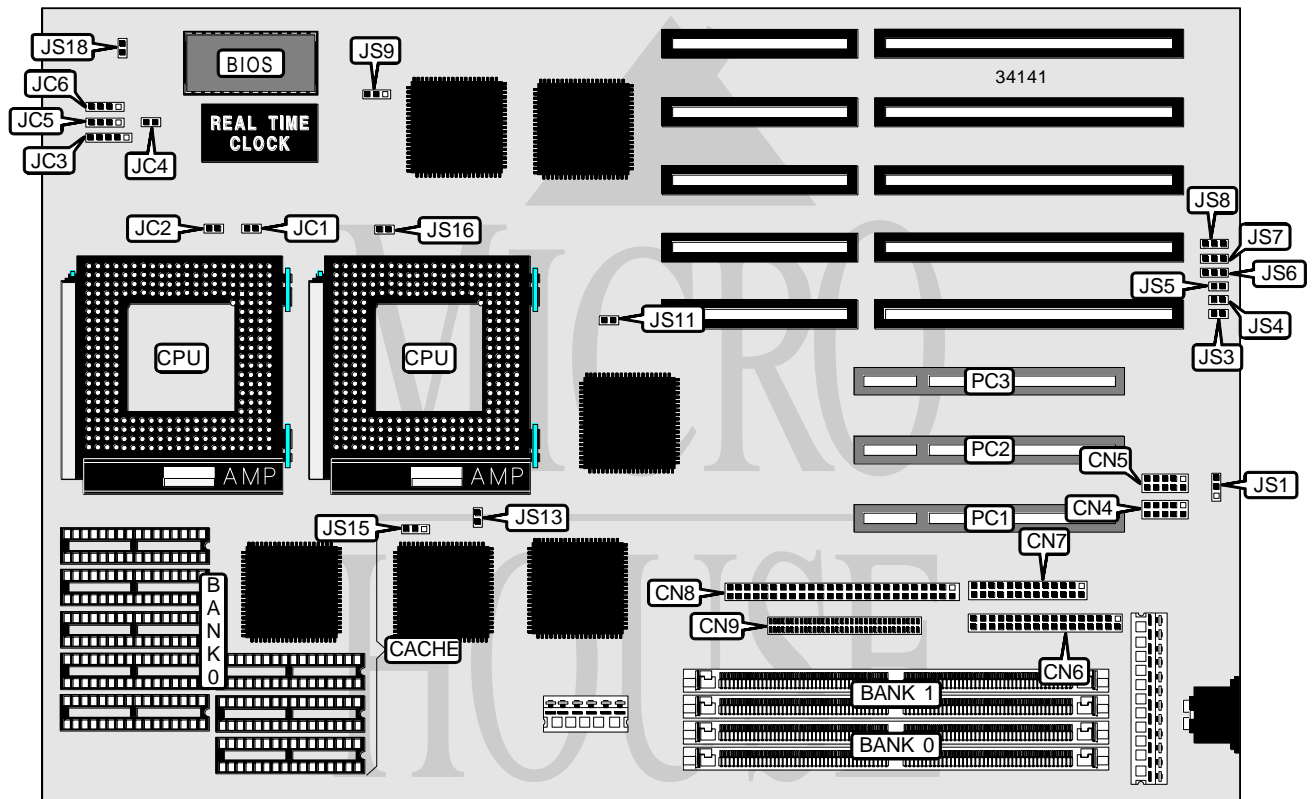


# ADVANCED INTEGRATION RESEARCH, INC.

## 54CDP (REV. 1.0)

<b>Processor</b>	Pentium
<b>Processor Speed</b>	90/100MHz
<b>Chip Set</b>	Intel
<b>Video Chip Set</b>	None
<b>Maximum Onboard Memory</b>	512MB
<b>Maximum Video Memory</b>	None
<b>Cache</b>	256/512KB
<b>BIOS</b>	AMI
<b>Dimensions</b>	332mm x 221mm
<b>I/O Options</b>	32-bit PCI slots (3), floppy drive interface, SCSI-2 interface, Wide SCSI-2 interface, parallel port, serial ports (2)
<b>NPU Options</b>	None



Continued on next page . . .

**ADVANCED INTEGRATION RESEARCH, INC.**  
**54CDP (REV. 1.0)**

... continued from previous page

CONNECTIONS			
Purpose	Location	Purpose	Location
Serial port 1	CN4	Turbo LED	JC2
Serial port 2	CN5	Power LED & keylock	JC3
Floppy drive interface	CN6	Turbo switch	JC4
Parallel port	CN7	SCSI interface LED	JC5
SCSI-2 interface	CN8	Speaker	JC6
Wide SCSI-2 interface	CN9	32-bit PCI slots	PC1 – PC3
Reset switch	JC1		

USER CONFIGURABLE SETTINGS		
Function	Label	Position
í CMOS memory normal operation	JS3	Open
CMOS memory clear	JS3	Closed
í Parallel port IRQ select IRQ7	JS6	Pins 2 & 3 closed
Parallel port IRQ select IRQ5	JS6	Pins 1 & 2 closed
í Flash BIOS normal operation	JS9	Pins 2 & 3 closed
Flash BIOS programming mode	JS9	Pins 1 & 2 closed
í Monitor type select VGA/EGA/monochrome	JS16	Closed
Monitor type select CGA	JS16	Open

DRAM CONFIGURATION		
Size	Bank 0	Bank 1
2MB	(2) 256K x 36	None
4MB	(2) 256K x 36	(2) 256K x 36
4MB	(2) 512K x 36	None
6MB	(2) 256K x 36	(2) 512K x 36
8MB	(2) 512K x 36	(2) 512K x 36
8MB	(2) 1M x 36	None
10MB	(2) 256K x 36	(2) 1M x 36
12MB	(2) 512K x 36	(2) 1M x 36
16MB	(2) 1M x 36	(2) 1M x 36
16MB	(2) 2M x 36	None
18MB	(2) 256K x 36	(2) 2M x 36
20MB	(2) 512K x 36	(2) 2M x 36
24MB	(2) 1M x 36	(2) 2M x 36
32MB	(2) 2M x 36	(2) 2M x 36
32MB	(2) 4M x 36	None
34MB	(2) 256K x 36	(2) 4M x 36
36MB	(2) 512K x 36	(2) 4M x 36
40MB	(2) 1M x 36	(2) 4M x 36
48MB	(2) 2M x 36	(2) 4M x 36

Continued on next page...

ADVANCED INTEGRATION RESEARCH, INC.  
54CDP (REV. 1.0)

... continued from previous page

DRAM CONFIGURATION (CON'T)		
Size	Bank 0	Bank 1
64MB	(2) 4M x 36	(2) 4M x 36
64MB	(2) 8M x 36	None
66MB	(2) 256K x 36	(2) 8M x 36
68MB	(2) 512K x 36	(2) 8M x 36
72MB	(2) 1M x 36	(2) 8M x 36
80MB	(2) 2M x 36	(2) 8M x 36
96MB	(2) 4M x 36	(2) 8M x 36
128MB	(2) 8M x 36	(2) 8M x 36
128MB	(2) 16M x 36	None
144MB	(2) 16M x 36	(2) 1M x 36
192MB	(2) 16M x 36	(2) 8M x 36
256MB	(2) 16M x 36	(2) 16M x 36
256MB	(2) 32M x 36	None
512MB	(2) 32M x 36	(2) 32M x 36

CACHE CONFIGURATION	
Size	Bank 0
256KB	(8) 32K x 8
512KB	(8) 64K x 8

CACHE JUMPER CONFIGURATION	
Size	JS15
256KB	Pins 1 & 2 closed
512KB	Pins 2 & 3 closed

CPU SPEED SELECTION	
Speed	JS18
90MHz	Open
100MHz	Closed

CPU TYPE SELECTION	
Type	JS13
í Single CPU installed	Closed
Dual CPUs installed	Open

DMA CHANNEL SELECTION			
Channel	JS5	JS7	JS8
í Normal	Open	Open	Open
1	Closed	Pins 1 & 2 closed	Pins 1 & 2 closed
3	Closed	Pins 2 & 3 closed	Pins 2 & 3 closed

Continued on next page...

---

**ADVANCED INTEGRATION RESEARCH, INC.**  
**54CDP (REV. 1.0)***... continued from previous page*

FLOPPY DRIVE SELECTION		
Setting	JS1	JS4
í Normal	Open	Open
Enhanced	Pins 2 & 3 closed	Closed

SCSI SELECTION	
Setting	JS11
í 8-bit Fast SCSI & 16-bit Fast Wide SCSI	Closed
8-bit Fast SCSI only	Open
16-bit Fast Wide SCSI only	Closed