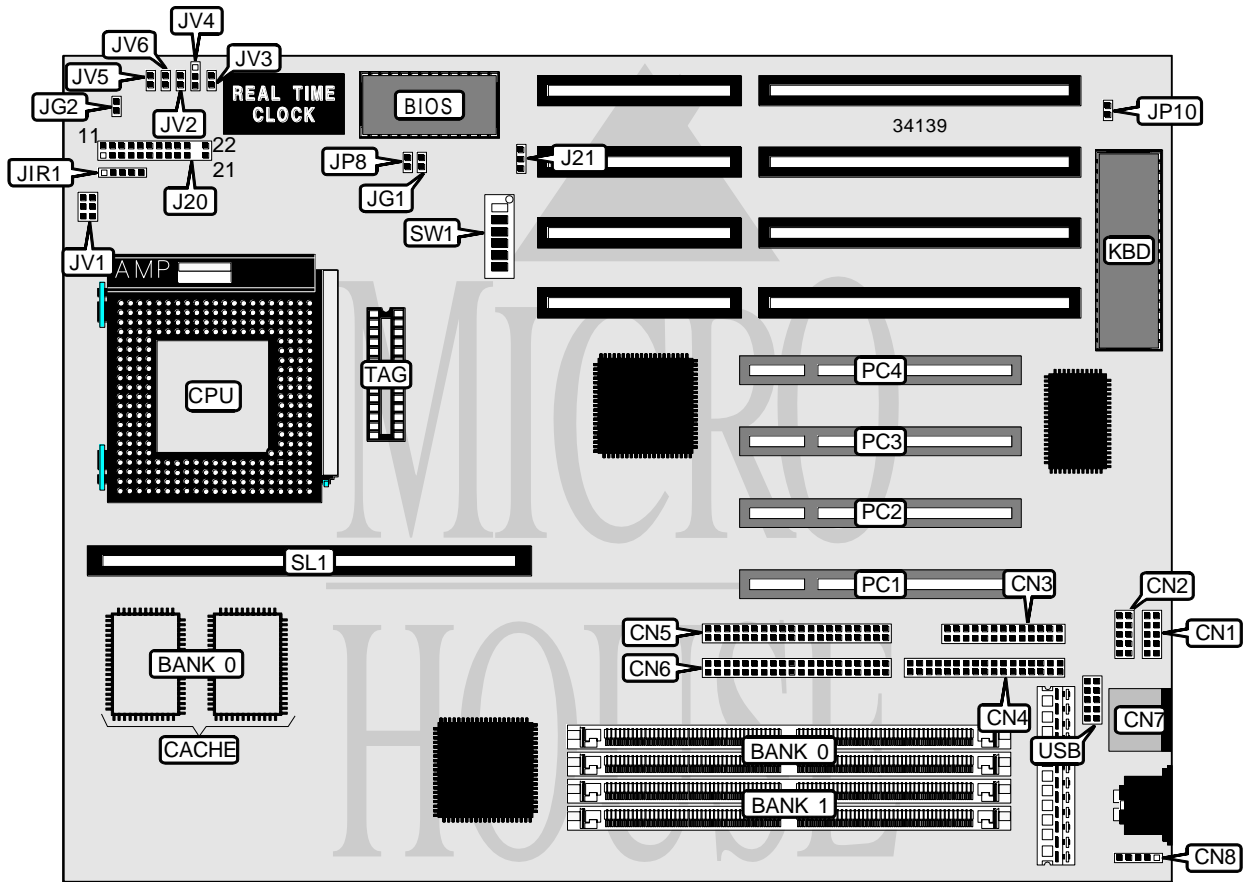


COMPUTREND SYSTEMS, INC. PCI430TX

Processor	CX M1/AM K5/Pentium
Processor Speed	75/90/100/120/133/150/166/200MHz
Chip Set	Intel
Video Chip Set	None
Maximum Onboard Memory	256MB (EDO supported)
Maximum Video Memory	None
Cache	256/512KB
BIOS	AMI/Award
Dimensions	280mm x 220mm
I/O Options	32-bit PCI slots (4), 22floppy drive interface, green PC connector, IDE interfaces (2), parallel port, PS/2 mouse port, PS/2 mouse interface, serial ports (2), cache slot, IR connector, USB connector
NPU Options	None



Continued on next page...

COMPUTREND SYSTEMS, INC.

PCI430TX

... continued from previous page

CONNECTIONS			
Purpose	Location	Purpose	Location
Serial port 1	CN1	Power LED & keylock	J20 pins 1 - 5
Serial port 2	CN2	Speaker	J20 pins 6 - 10
Parallel port	CN3	Turbo LED	J20 pins 12 & 13
Floppy drive interface	CN4	Turbo switch	J20 pins 15 - 17
IDE interface 2	CN5	Reset switch	J20 pins 19 & 20
IDE interface 1	CN6	IDE interface LED	J20 pins 21 & 22
PS/2 mouse port	CN7	Chassis fan power	J21
PS/2 mouse interface	CN8	32-bit PCI slots	PC1 - PC4
IR connector	JIR1	Cache slot	SL1
Green PC connector	JG1	USB connector	USB
Green PC LED	JG2		

USER CONFIGURABLE SETTINGS		
Function	Label	Position
í CMOS memory normal operation	JP8	Open
CMOS memory clear	JP8	Closed
í Factory configured - do not alter	JP10	Unidentified
í Factory configured - do not alter	JV1	Unidentified

DRAM CONFIGURATION		
Size	Bank 0	Bank 1
8MB	(2) 1M x 36	None
16MB	(2) 2M x 36	None
16MB	(2) 1M x 36	(2) 1M x 36
24MB	(2) 2M x 36	(2) 1M x 36
32MB	(2) 4M x 36	None
32MB	(2) 2M x 36	(2) 2M x 36
40MB	(2) 4M x 36	(2) 1M x 36
48MB	(2) 4M x 36	(2) 2M x 36
64MB	(2) 8M x 36	None
64MB	(2) 4M x 36	(2) 4M x 36
72MB	(2) 8M x 36	(2) 1M x 36
80MB	(2) 8M x 36	(2) 2M x 36
96MB	(2) 8M x 36	(2) 4M x 36
128MB	(2) 8M x 36	(2) 8M x 36
128MB	(2) 16M x 36	None
136MB	(2) 16M x 36	(2) 1M x 36
144MB	(2) 16M x 36	(2) 2M x 36
160MB	(2) 16M x 36	(2) 4M x 36
192MB	(2) 16M x 36	(2) 8M x 36
256MB	(2) 16M x 36	(2) 16M x 36

Note: Board accepts EDO memory.

Continued on next page. . .

COMPUTREND SYSTEMS, INC.

PCI430TX

... continued from previous page

CACHE CONFIGURATION			
Size	Bank 0	SL1	TAG
256KB	(2) 32K x 32	Not installed	Unidentified
256KB	None	256KB module installed	Unidentified
512KB	(2) 32K x 32	256KB module installed	Unidentified
512KB	(2) 64K x 32	Not installed	Unidentified
512KB	None	512KB module installed	Unidentified

CPU SPEED SELECTION (CYRIX)								
CPU speed	Clock speed	Multiplier	SW1/1	SW1/2	SW1/3	SW1/4	SW1/5	SW1/6
120MHz	50MHz	2x	Off	On	Off	Off	On	Off
133MHz	55MHz	2x	Off	On	Off	On	On	On
150MHz	60MHz	2x	Off	On	Off	Off	Off	On
166MHz	66MHz	2x	Off	On	Off	Off	Off	Off

CPU SPEED SELECTION (AMD)								
CPU speed	Clock speed	Multiplier	SW1/1	SW1/2	SW1/3	SW1/4	SW1/5	SW1/6
75MHz	50MHz	1.5x	Off	Off	Off	Off	On	Off
90MHz	60MHz	1.5x	Off	Off	Off	Off	Off	On
100MHz	66MHz	1.5x	Off	Off	Off	Off	Off	Off
120MHz	60MHz	2x	Off	Off	Off	Off	Off	On
133MHz	66MHz	2x	Off	Off	Off	Off	Off	Off
166MHz	66MHz	1.75x	Off	On	On	Off	Off	Off

CPU SPEED SELECTION (INTEL)								
CPU speed	Clock speed	Multiplier	SW1/1	SW1/2	SW1/3	SW1/4	SW1/5	SW1/6
75MHz	50MHz	1.5x	Off	Off	Off	Off	On	Off
90MHz	60MHz	1.5x	Off	Off	Off	Off	Off	On
100MHz	66MHz	1.5x	Off	Off	Off	Off	Off	Off
120MHz	60MHz	2x	Off	On	Off	Off	Off	On
133MHz	66MHz	2x	Off	On	Off	Off	Off	Off
150MHz	60MHz	2.5x	Off	On	On	Off	Off	On
166MHz	66MHz	2.5x	Off	On	On	Off	Off	Off
200MHz (P54C)	66MHz	3x	Off	Off	On	Off	Off	Off
200MHz (P55C)	66MHz	3x	On	Off	On	Off	Off	Off

CPU VOLTAGE SELECTION					
Voltage	JV2	JV3	JV4	JV5	JV6
2.8v	Open	Closed	1 & 2	Closed	Open
3.38v	Open	Open	2 & 3	Open	Open
3.52v	Open	Closed	2 & 3	Open	Open

Note: Pins designated should be in the closed position.