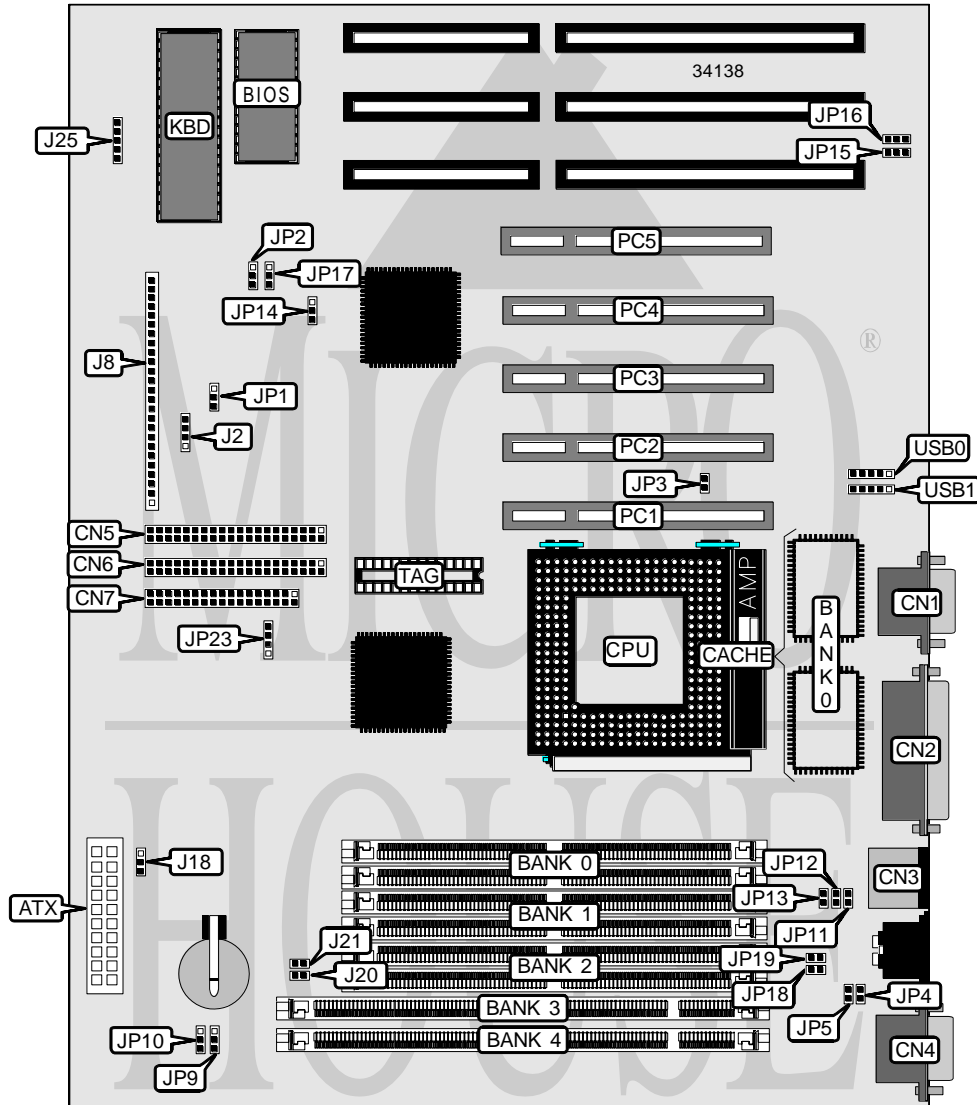


# TYAN COMPUTER CORPORATION

## S 1 5 7 2

<b>Processor</b>	CX M1/IBM/SGS/AMD/Pentium
<b>Processor Speed</b>	75/90/100/120/133/150/166/180/200MHz
<b>Chip Set</b>	Intel
<b>Video Chip Set</b>	None
<b>Maximum Onboard Memory</b>	256MB (EDO supported)
<b>Maximum Video Memory</b>	None
<b>Cache</b>	512KB
<b>BIOS</b>	AMI/Award
<b>Dimensions</b>	305mm x 244mm
<b>I/O Options</b>	32-bit PCI slots (5), floppy drive interface, green PC connector, IDE interfaces (2), parallel port, PS/2 mouse port, serial ports (2), IR connectors (2), USB connectors (2), ATX power connector
<b>NPU Options</b>	None



Continued on next page. . .

# TYAN COMPUTER CORPORATION

## S 1 5 7 2

... continued from previous page

CONNECTIONS			
Purpose	Location	Purpose	Location
ATX power connector	ATX	IDE interface LED 1	J8 pins 13 & 14
Serial port 2	CN1	IDE interface LED 2	J8 pins 15 & 16
Parallel port	CN2	Power LED	J8 pins 18 - 20
PS/2 mouse port	CN3	Reset switch	J8 pins 22 & 23
Serial port 1	CN4	Speaker	J8 pins 24 & 27
IDE interface 2	CN5	Chassis fan power	J18
IDE interface 1	CN6	Keylock	J25
Floppy drive interface	CN7	32-bit PCI slots	PC1 – PC5
Soft off power supply	J8 pins 1 & 2	USB connector 1	USB0
Green PC connector	J8 pins 3 & 4	USB connector 2	USB1
IR connector 1	J8 pins 8 - 11		

USER CONFIGURABLE SETTINGS		
Function	Label	Position
í Factory configured - do not alter	J2	Unidentified
í CMOS memory normal operation	JP1	Pins 1 & 2 closed
CMOS memory clear	JP1	Pins 2 & 3 closed
í Factory configured - do not alter	JP2	Pins 1 & 2 closed
í Factory configured - do not alter	JP3	Unidentified
í Factory configured - do not alter	JP11	Open
í Factory configured - do not alter	JP12	Open
í Factory configured - do not alter	JP13	Closed
í Factory configured - do not alter	JP14	Unidentified
í Factory configured - do not alter	JP17	Unidentified
í Factory configured - do not alter	JP18	Unidentified
í Factory configured - do not alter	JP18	Unidentified

Continued on next page. . .

# TYAN COMPUTER CORPORATION

## S 1 5 7 2

... continued from previous page

DIMM/DRAM CONFIGURATION					
Size	Bank 0	Bank 1	Bank 2	Bank 3	Bank 4
8MB	(2) 1M x 36	None	None	None	None
8MB	None	None	None	(1) 1M x 64	None
16MB	None	None	None	(1) 2M x 64	None
16MB	(2) 2M x 36	None	None	None	None
24MB	(2) 1M x 36	(2) 1M x 36	(2) 1M x 36	None	None
32MB	(2) 4M x 36	None	None	None	None
32MB	None	(2) 2M x 36	None	(1) 2M x 64	None
64MB	(2) 8M x 36	None	None	None	None
64MB	None	None	None	None	(1) 8M x 64
96MB	None	None	None	(1) 4M x 64	(1) 8M x 64
128MB	None	None	None	(1) 8M x 64	(1) 8M x 64
192MB	(2) 16M x 36	None	None	None	(1) 8M x 64
256MB	(2) 16M x 36	(2) 16M x 36	(2) 16M x 36	None	None

Note: Board accepts EDO memory.

DRAM VOLTAGE CONFIGURATION		
Voltage	JP9	JP10
3v	Pins 1 & 2 closed	Pins 1 & 2 closed
5v	Pins 2 & 3 closed	Pins 2 & 3 closed

CACHE CONFIGURATION		
Size	Bank 0	TAG
512KB	(2) 64K x 32	Unidentified

CPU SPEED SELECTION (CYRIX)					
CPU speed	Clock speed	Multiplier	JP4	JP5	JP23
120MHz	50MHz	2x	Closed	Open	1 & 2, 3 & 4
150MHz	60MHz	2x	Closed	Open	3 & 4
166MHz	66MHz	2x	Closed	Open	1 & 2

Note: Pins designated should be in the closed position.

CPU SPEED SELECTION (IBM)					
CPU speed	Clock speed	Multiplier	JP4	JP5	JP23
120MHz	50MHz	2x	Closed	Open	1 & 2, 3 & 4
150MHz	60MHz	2x	Closed	Open	3 & 4
166MHz	66MHz	2x	Closed	Open	1 & 2

Note: Pins designated should be in the closed position.

Continued on next page...

**TYAN COMPUTER CORPORATION**  
**S 1 5 7 2**

... continued from previous page

CPU SPEED SELECTION (SGS)					
CPU speed	Clock speed	Multiplier	JP4	JP5	JP23
120MHz	50MHz	2x	Closed	Open	1 & 2, 3 & 4
150MHz	60MHz	2x	Closed	Open	3 & 4
166MHz	66MHz	2x	Closed	Open	1 & 2

Note: Pins designated should be in the closed position.

CPU SPEED SELECTION (AMD)					
CPU speed	Clock speed	Multiplier	JP4	JP5	JP23
120MHz	50MHz	2x	Closed	Open	1 & 2, 3 & 4
150MHz	60MHz	2x	Closed	Open	3 & 4
166MHz	66MHz	2x	Closed	Open	1 & 2

Note: Pins designated should be in the closed position.

CPU SPEED SELECTION (INTEL)					
CPU speed	Clock speed	Multiplier	JP4	JP5	JP23
75MHz	50MHz	1.5x	Open	Open	1 & 2, 3 & 4
90MHz	60MHz	1.5x	Open	Open	3 & 4
100MHz	66MHz	1.5x	Open	Open	1 & 2
120MHz	60MHz	2x	Closed	Open	3 & 4
133MHz	66MHz	2x	Closed	Open	1 & 2
150MHz	60MHz	2.5x	Closed	Closed	3 & 4
166MHz	66MHz	2.5x	Closed	Closed	1 & 2
180MHz	60MHz	3x	Open	Closed	3 & 4
200MHz	66MHz	3x	Open	Closed	1 & 2

Note: Pins designated should be in the closed position.

SERIAL PORT SELECTION		
Setting	JP15	JP16
Used as serial port	Pins 1 & 2 closed	Pins 1 & 2 closed
Used as IR port	Pins 2 & 3 closed	Pins 2 & 3 closed