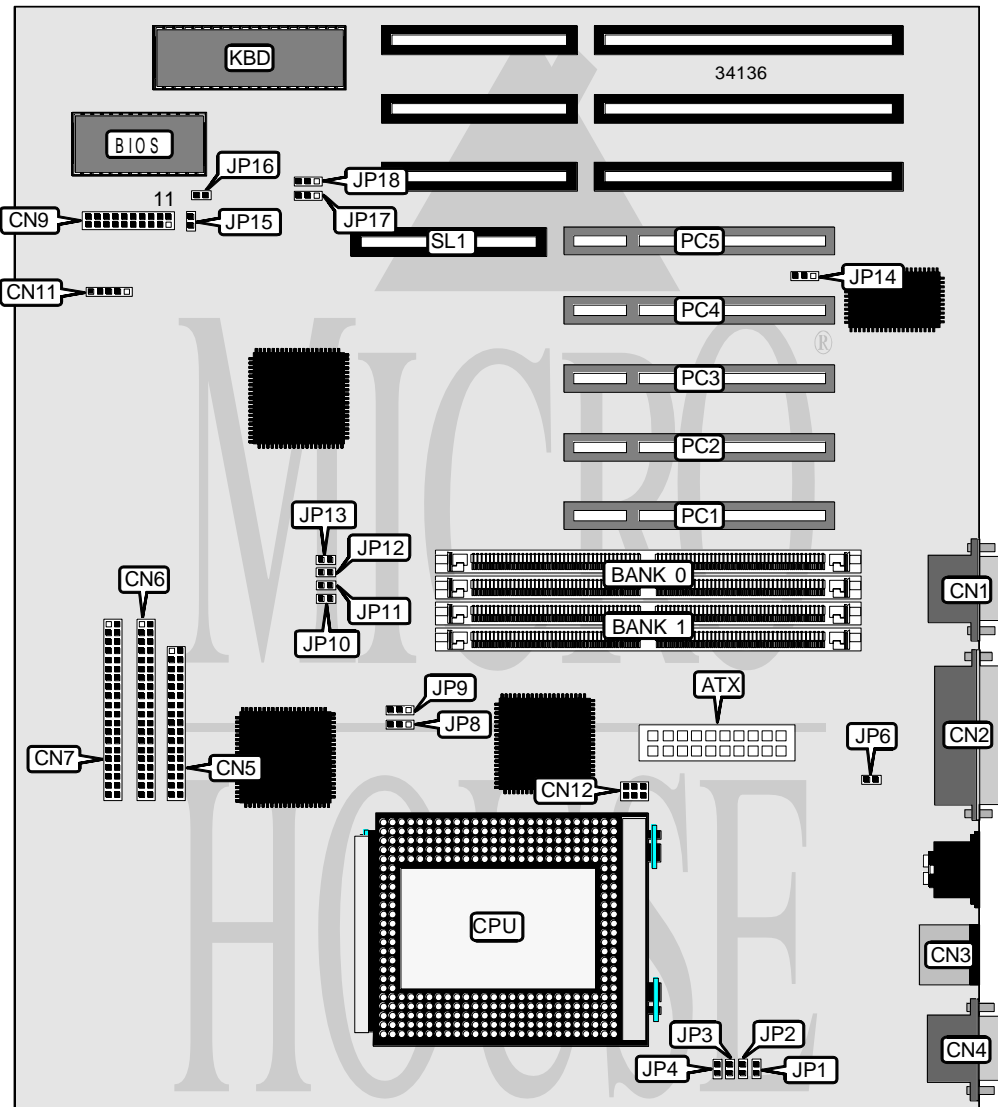


ASUS COMPUTER INTERNATIONAL P/I-XP6NP5 (REV. 1.6)

Processor	Pentium Pro
Processor Speed	150/166/180/200MHz
Chip Set	Intel
Video Chip Set	None
Maximum Onboard Memory	128MB (EDO supported)
Maximum Video Memory	None
Cache	256/512KB (located on Pentium Pro CPU)
BIOS	Award
Dimensions	305mm x 244mm
I/O Options	32-bit PCI slots (5), floppy drive interface, green PC connector, IDE interfaces (2), parallel port, PS/2 mouse port, serial ports (2), IR connector, ATX power connector, MediaBus slot
NPU Options	None



Continued on next page. . .

ASUS COMPUTER INTERNATIONAL

P/I-XP6NP5 (REV. 1.6)

... continued from previous page

CONNECTIONS			
Purpose	Location	Purpose	Location
ATX power connector	ATX	System power LED	CN9 pins 12 & 13
Serial port 2	CN1	Green PC connector	CN9 pins 14 & 15
Parallel port	CN2	ATX power switch	CN9 pins 16 & 17
PS/2 mouse port	CN3	Reset switch	CN9 pins 19 & 20
Serial port 1	CN4	IR connector	CN11
Floppy drive interface	CN5	Chassis fan power	CN12
IDE interface 2	CN6	IDE interface LED	JP15
IDE interface 1	CN7	32-bit PCI slots	PC1 – PC5
Power LED & keylock	CN9 pins 1 - 5	MediaBus slot	SL1
Speaker	CN9 pins 7 - 10		

USER CONFIGURABLE SETTINGS		
Function	Label	Position
Power source select onboard regulator	JP6	Open
Power source select ATX power supply	JP6	Closed
í On board I/O enabled	JP14	Pins 1 & 2 closed
On board I/O disabled	JP14	Pins 2 & 3 closed
í CMOS memory normal operation	JP16	Open
CMOS memory clear	JP16	Closed
í Flash BIOS normal operation	JP17	Pins 1 & 2 closed
Flash BIOS boot block enabled	JP17	Pins 2 & 3 closed
í PS/2 mouse IRQ12 enabled	JP18	Pins 2 & 3 closed
PS/2 mouse IRQ12 disabled	JP18	Pins 1 & 2 closed

DRAM CONFIGURATION		
Size	Bank 0	Bank 1
8MB	(2) 1M x 36	None
16MB	(2) 2M x 36	None
16MB	(2) 1M x 36	(2) 1M x 36
24MB	(2) 2M x 36	(2) 1M x 36
32MB	(2) 4M x 36	None
32MB	(2) 2M x 36	(2) 2M x 36
40MB	(2) 4M x 36	(2) 1M x 36
48MB	(2) 4M x 36	(2) 2M x 36
64MB	(2) 8M x 36	None
64MB	(2) 4M x 36	(2) 4M x 36
72MB	(2) 8M x 36	(2) 1M x 36
80MB	(2) 8M x 36	(2) 2M x 36
96MB	(2) 8M x 36	(2) 4M x 36
128MB	(2) 8M x 36	(2) 8M x 36
128MB	(2) 16M x 36	None

Continued on next page. . .

ASUS COMPUTER INTERNATIONAL

P/I-XP6NP5 (REV. 1.6)

... continued from previous page

DRAM CONFIGURATION (CON'T)		
Size	Bank 0	Bank 1
136MB	(2) 16M x 36	(2) 1M x 36
144MB	(2) 16M x 36	(2) 2M x 36
160MB	(2) 16M x 36	(2) 4M x 36
192MB	(2) 16M x 36	(2) 8M x 36
256MB	(2) 16M x 36	(2) 16M x 36

Note: Board accepts EDO memory. Banks are interchangeable.

CACHE CONFIGURATION
Note: 256KB/512KB cache is located on the Pentium Pro CPU.

CPU SPEED SELECTION								
CPU speed	Clock speed	Multiplier	JP8	JP9	JP10	JP11	JP12	JP13
150MHz	60MHz	2.5x	2 & 3	1 & 2	Closed	Closed	Closed	Open
166MHz	66MHz	2.5x	1 & 2	2 & 3	Closed	Closed	Closed	Open
180MHz	60MHz	3x	2 & 3	1 & 2	Closed	Closed	Open	Closed
200MHz	66MHz	3x	1 & 2	2 & 3	Closed	Closed	Open	Closed

Note: Pins designated should be in the closed position.

CPU VOLTAGE SELECTION				
Voltage	JP1	JP2	JP3	JP4
2.1v	Open	Open	Open	Closed
2.2v	Open	Open	Closed	Open
2.3v	Open	Open	Closed	Closed
2.4v	Open	Closed	Open	Open
2.5v	Open	Closed	Open	Closed
2.6v	Open	Closed	Closed	Open
2.7v	Open	Closed	Closed	Closed
2.8v	Closed	Open	Open	Open
2.9v	Closed	Open	Open	Closed
3.0v	Closed	Open	Closed	Open
3.1v	Closed	Open	Closed	Closed
3.2v	Closed	Closed	Open	Open
3.3v	Closed	Closed	Open	Closed
3.4v	Closed	Closed	Closed	Open
3.5v	Closed	Closed	Closed	Closed