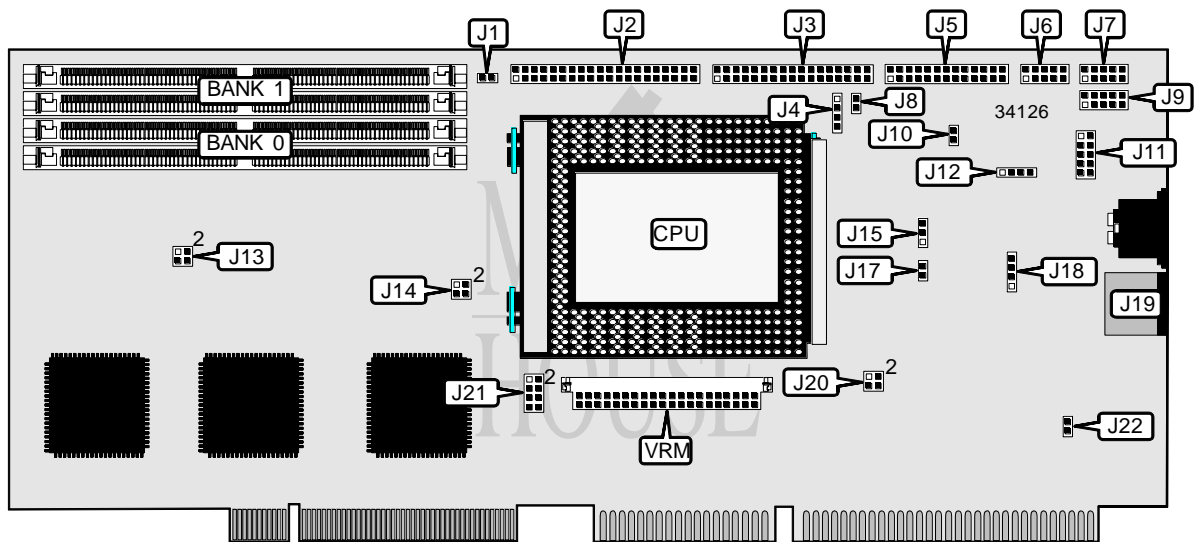


I-BUS THRESHER

Processor	Pentium Pro
Processor Speed	150/166/180/200MHz
Chip Set	Unidentified
Video Chip Set	None
Maximum Onboard Memory	512MB (EDO supported)
Maximum Video Memory	None
Cache	256/512KB (located on Pentium Pro CPU)
BIOS	Award
Dimensions	Unidentified
I/O Options	Floppy drive interface, IDE interface, parallel port, PS/2 mouse port, serial ports (2), VRM connector, USB connector
NPU Options	None



CONNECTIONS			
Purpose	Location	Purpose	Location
IDE interface LED	J1	Auxiliary keyboard connector	J9
IDE interface	J2	Reset switch	J10
Floppy drive interface	J3	USB connector	J11
Chassis fan power	J4	Speaker	J12
Parallel port	J5	External battery	J18
Serial port 1	J6	PS/2 mouse port	J19
Serial port 2	J7	VRM connector	VRM

Continued on next page. . .

I-BUS THRESHER

... continued from previous page

USER CONFIGURABLE SETTINGS		
Function	Label	Position
Flash BIOS write protect disabled	J8	Open
Flash BIOS write protect enabled	J8	Closed
On board speaker enabled	J12	Pins 1 & 2 closed
On board speaker disabled	J12	Open
External speaker enabled	J12	Closed
í Factory configured - do not alter	J15	Unidentified
Watch dog timer enabled	J17	Closed
Watch dog timer disabled	J17	Open
On board speaker enabled	J18	Pins 3 & 4 closed
On board speaker disabled	J18	Open
External speaker enabled	J18	Closed
í Factory configured - do not alter	J22	Unidentified

DRAM CONFIGURATION		
Size	Bank 0	Bank 1
8MB	(2) 1M x 36	None
16MB	(2) 2M x 36	None
16MB	(2) 1M x 36	(2) 1M x 36
24MB	(2) 1M x 36	(2) 2M x 36
32MB	(2) 4M x 36	None
32MB	(2) 2M x 36	(2) 2M x 36
40MB	(2) 1M x 36	(2) 4M x 36
48MB	(2) 2M x 36	(2) 4M x 36
64MB	(2) 8M x 36	None
64MB	(2) 4M x 36	(2) 4M x 36
72MB	(2) 1M x 36	(2) 8M x 36
80MB	(2) 2M x 36	(2) 8M x 36
96MB	(2) 4M x 36	(2) 8M x 36
128MB	(2) 16M x 36	None
128MB	(2) 8M x 36	(2) 8M x 36
136MB	(2) 1M x 36	(2) 16M x 36
144MB	(2) 2M x 36	(2) 16M x 36
160MB	(2) 4M x 36	(2) 16M x 36
192MB	(2) 8M x 36	(2) 16M x 36
256MB	(2) 16M x 36	(2) 16M x 36
512MB	(2) 32M x 36	(2) 32M x 36

Note: Board accepts EDO memory.

CACHE CONFIGURATION
Note: 256KB/512KB cache is located on the Pentium Pro CPU.

Continued on next page. ...

I-BUS THRESHER

... continued from previous page

CPU SPEED SELECTION					
CPU speed	Clock speed	Multiplier	J13	J14	J21
150MHz	60MHz	2.5x	1 & 3	2 & 4	3 & 4, 5 & 6, 7 & 8
166MHz	66MHz	2.5x	2 & 4	1 & 3	3 & 4, 5 & 6, 7 & 8
180MHz	60MHz	3x	1 & 3	2 & 4	1 & 2, 3 & 4, 7 & 8
200MHz	66MHz	3x	2 & 4	1 & 3	1 & 2, 3 & 4, 7 & 8

Note: Pins designated should be in the closed position.

WATCH DOG TIMER/ISA BUS SELECTION	
Setting	J20
í IRQ11 for ISA bus only	Pins 3 & 4 closed
IRQ11 for watch dog timer and ISA bus	Pins 1 & 3, 2 & 4 closed
IRQ11 for watch dog timer only	Pins 1 & 3 closed