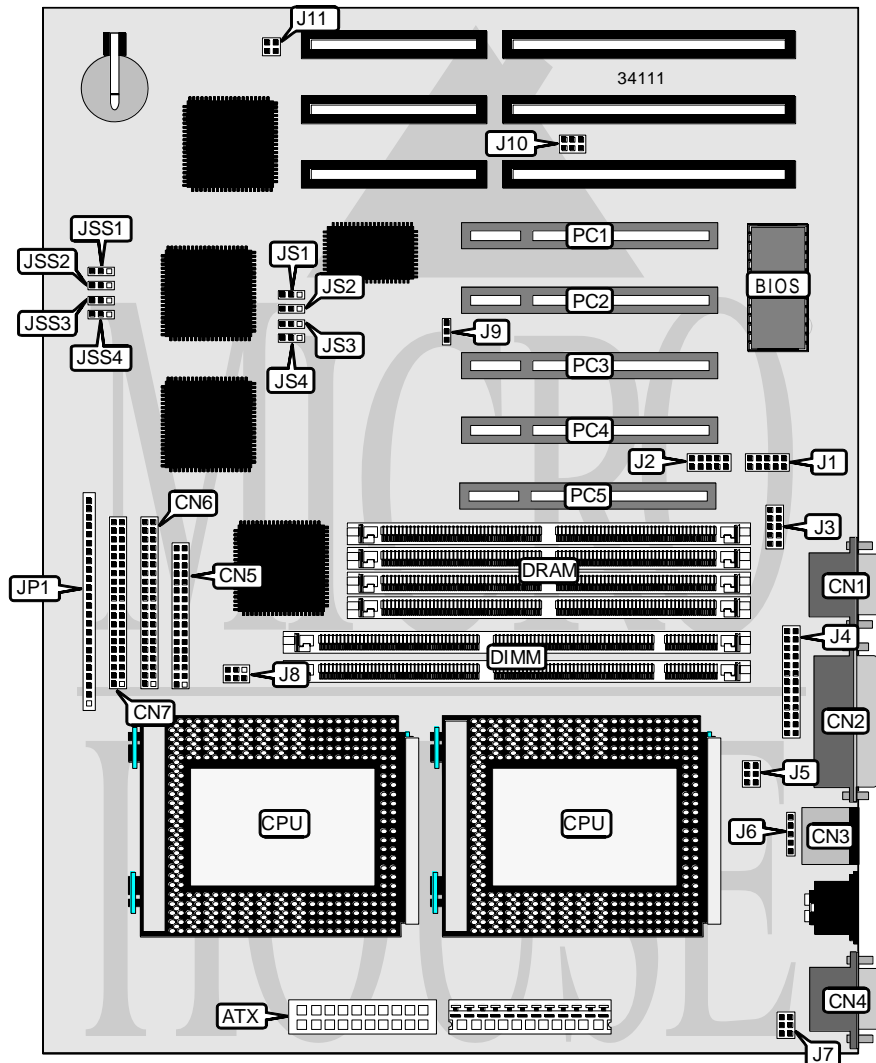


# ADVANCED INTEGRATION RESEARCH, INC.

## P 6 N D I

<b>Processor</b>	Pentium Pro
<b>Processor Speed</b>	150/180/200MHz
<b>Chip Set</b>	Intel
<b>Video Chip Set</b>	None
<b>Maximum Onboard Memory</b>	1GB (EDO supported)
<b>Maximum Video Memory</b>	None
<b>Cache</b>	256/512/1024KB (located on Pentium Pro CPU)
<b>BIOS</b>	AMI
<b>Dimensions</b>	305mm x 244mm
<b>I/O Options</b>	32-bit PCI slots (5), floppy drive interface, green PC connector, IDE interfaces (2), parallel port, PS/2 mouse port, serial ports (2), IR connector, ATX power connector
<b>NPU Options</b>	None



Continued on next page . . .

**ADVANCED INTEGRATION RESEARCH, INC.**  
**P 6 N D I**

... continued from previous page

CONNECTIONS			
Purpose	Location	Purpose	Location
ATX power connector	ATX	Turbo LED	JP1 pins 3 & 4
Serial port 2	CN1	Power LED & keylock	JP1 pins 5 - 9
Parallel port	CN2	IDE interface LED	JP1 pins 10 - 13
PS/2 mouse port	CN3	Speaker	JP1 pins 14 - 17
Serial port 1	CN4	Reset switch	JP1 pins 18 & 19
Floppy drive interface	CN5	Green PC connector	JP1 pins 20 & 21
IDE interface 1	CN6	IR connector	JP1 pins 22 - 26
IDE interface 2	CN7	32-bit PCI slots	PC1 – PC5
Soft on power supply	JP1 pins 1 & 2		

USER CONFIGURABLE SETTINGS		
Function	Label	Position
í Factory configured - do not alter	J1	Unidentified
í Factory configured - do not alter	J2	Unidentified
í Factory configured - do not alter	J3	Unidentified
í Factory configured - do not alter	J4	Unidentified
í Factory configured - do not alter	J5	Unidentified
í Factory configured - do not alter	J6	Unidentified
í Factory configured - do not alter	J7	Unidentified
í Factory configured - do not alter	J8	Unidentified
í Factory configured - do not alter	J9	Unidentified
í Factory configured - do not alter	J10	Unidentified
í Factory configured - do not alter	J11	Unidentified

DIMM/DRAM CONFIGURATION				
Size	Bank 0	Bank 1	Bank 2	Bank 3
8MB	(2) 1M x 36	None	None	None
16MB	(2) 1M x 36	(2) 1M x 36	None	None
16MB	(2) 2M x 36	None	None	None
24MB	(2) 1M x 36	(2) 1M x 36	(1) 1M x 64	None
32MB	(2) 1M x 36	(2) 1M x 36	(1) 1M x 64	(1) 1M x 64
32MB	(2) 2M x 36	(2) 2M x 36	None	None
32MB	(2) 4M x 36	None	None	None
48MB	(2) 2M x 36	(2) 2M x 36	(1) 2M x 64	None
64MB	(2) 2M x 36	(2) 2M x 36	(1) 2M x 64	(1) 2M x 64
64MB	(2) 4M x 36	(2) 4M x 36	None	None
64MB	(2) 8M x 36	None	None	None
96MB	(2) 4M x 36	(2) 4M x 36	(1) 4M x 64	None
128MB	(2) 4M x 36	(2) 4M x 36	(1) 4M x 64	(1) 4M x 64
128MB	(2) 8M x 36	(2) 8M x 36	None	None
128MB	(2) 16M x 36	None	None	None

Continued on next page. . .

# ADVANCED INTEGRATION RESEARCH, INC.

## P 6 N D I

... continued from previous page

DIMM/DRAM CONFIGURATION				
Size	Bank 0	Bank 1	Bank 2	Bank 3
192MB	(2) 8M x 36	(2) 8M x 36	(1) 8M x 64	None
256MB	(2) 8M x 36	(2) 8M x 36	(1) 8M x 64	(1) 8M x 64
256MB	(2) 16M x 36	(2) 16M x 36	None	None
256MB	(2) 32M x 36	None	None	None
384MB	(2) 16M x 36	(2) 16M x 36	(1) 16M x 64	None
512MB	(2) 16M x 36	(2) 16M x 36	(1) 16M x 64	(1) 16M x 64
512MB	(2) 32M x 36	(2) 32M x 36	None	None
768MB	(2) 32M x 36	(2) 32M x 36	(1) 32M x 64	None
1GB	(2) 32M x 36	(2) 32M x 36	(1) 32M x 64	(1) 32M x 64

Note: Board accepts EDO memory. Board also accepts x 32 SIMMs and x 72 DIMMs. The location of the banks are unidentified.

CACHE CONFIGURATION
Note: 256KB/512KB/1MB cache is located on the Pentium Pro CPU.

CPU SPEED SELECTION								
Speed	JS1	JS2	JS3	JS4	JSS1	JSS2	JSS3	JSS4
150MHz	1 & 2	1 & 2	1 & 2	1 & 2	2 & 3	1 & 2	1 & 2	1 & 2
180MHz	1 & 2	1 & 2	1 & 2	1 & 2	1 & 2	2 & 3	1 & 2	1 & 2
200MHz	2 & 3	2 & 3	2 & 3	2 & 3	1 & 2	2 & 3	1 & 2	1 & 2

Note: Pins designated should be in the closed position.