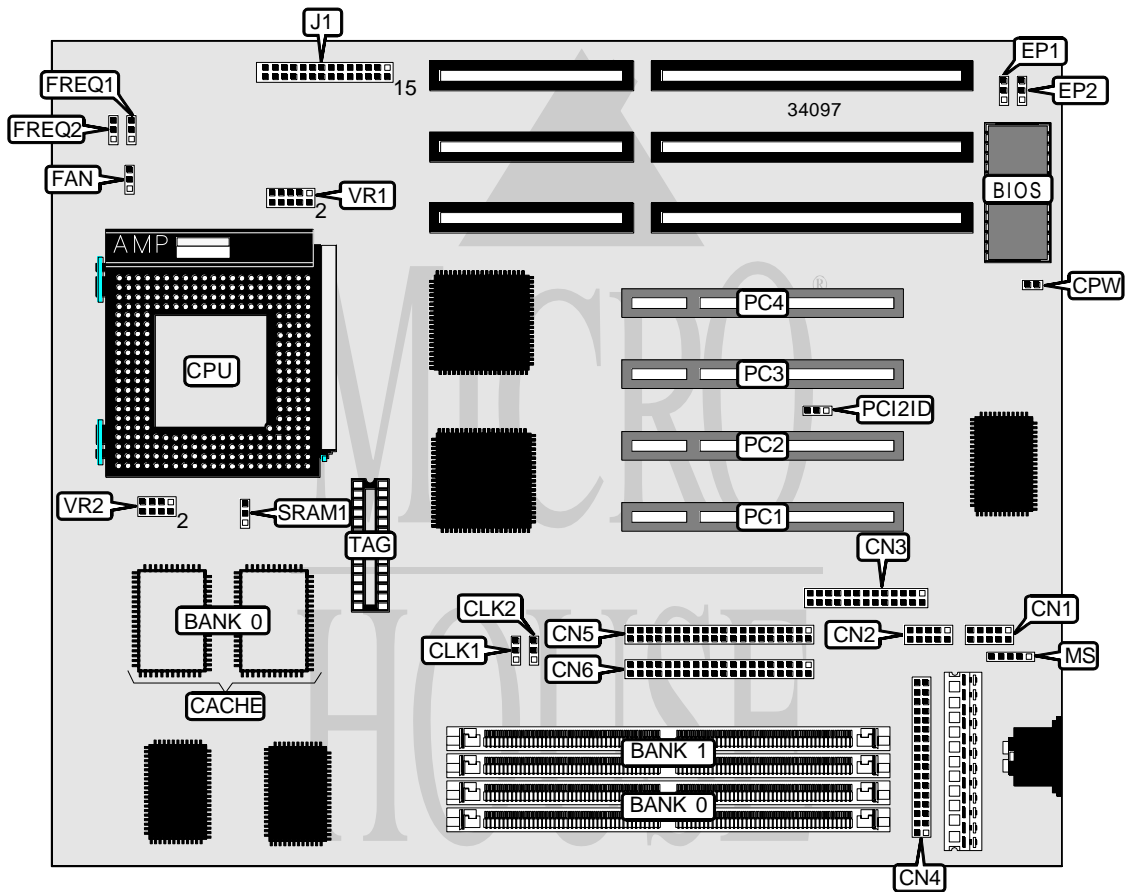


FIRST INTERNATIONAL COMPUTER, INC. VA - 501

| | |
|-------------------------------|---|
| Processor | CX M1/IBM/AM K5/Pentium |
| Processor Speed | 75/90/100/120/133/150/166/180/200MHz |
| Chip Set | VIA |
| Video Chip Set | None |
| Maximum Onboard Memory | 64MB (EDO supported) |
| Maximum Video Memory | None |
| Cache | 256/512KB |
| BIOS | Unidentified |
| Dimensions | 254mm x 218mm |
| I/O Options | 32-bit PCI slots (4), floppy drive interface, green PC connector, IDE interfaces (2), parallel port, PS/2 mouse interface, serial ports (2) |
| NPU Options | None |



Continued on next page. . .

FIRST INTERNATIONAL COMPUTER, INC.

VA - 501

... continued from previous page

| CONNECTIONS | | | |
|------------------------|---------------|----------------------|-----------------|
| Purpose | Location | Purpose | Location |
| Serial port 1 | CN1 | Green PC connector | J1 pins 10 & 11 |
| Serial port 2 | CN2 | Green PC LED | J1 pins 13 & 14 |
| Parallel port | CN3 | Speaker | J1 pins 15 - 18 |
| Floppy drive interface | CN4 | IDE interface LED | J1 pins 20 & 21 |
| IDE interface 1 | CN5 | Remote control power | J1 pins 23 & 24 |
| IDE interface 2 | CN6 | Reset switch | J1 pins 27 & 28 |
| Chassis fan power | FAN | PS/2 mouse interface | MS |
| Power LED & keylock | J1 pins 1 - 5 | 32-bit PCI slots | PC1 - PC4 |
| Turbo LED | J1 pins 7 & 8 | | |

| USER CONFIGURABLE SETTINGS | | |
|---|--------|-------------------|
| Function | Label | Position |
| í Password disabled | CPW | Open |
| Password enabled | CPW | Closed |
| í More than 1 PCI card installed before PCI Encoding Standard | PCI2ID | Pins 1 & 2 closed |
| 1 PCI card installed before PCI Encoding Standard | PCI2ID | Pins 2 & 3 closed |

| DRAM CONFIGURATION | | |
|--------------------|-------------|-------------|
| Size | Bank 0 | Bank 1 |
| 8MB | (2) 1M x 36 | None |
| 16MB | (2) 2M x 36 | None |
| 16MB | (2) 1M x 36 | (2) 1M x 36 |
| 24MB | (2) 2M x 36 | (2) 1M x 36 |
| 32MB | (2) 4M x 36 | None |
| 32MB | (2) 2M x 36 | (2) 2M x 36 |
| 64MB | (2) 8M x 36 | None |
| 64MB | (2) 4M x 36 | (2) 4M x 36 |

Note: Board accepts EDO memory.

| CACHE CONFIGURATION | | |
|---------------------|--------------|-----------------|
| Size | Bank 0 | TAG |
| 256KB | (2) 32K x 32 | (1) 16K/32K x 8 |
| 512KB | (2) 64K x 32 | (1) 16K/32K x 8 |

| CACHE JUMPER CONFIGURATION | |
|-----------------------------|-------------------|
| Type | SRAM1 |
| í Intel burst (Intel & AMD) | Pins 1 & 2 closed |
| Linear burst (Cyrix & IBM) | Pins 2 & 3 closed |

Continued on next page...

FIRST INTERNATIONAL COMPUTER, INC.

VA-501

... continued from previous page

| CPU SPEED SELECTION (CYRIX) | | | | | | |
|-----------------------------|-------------|------------|-------|-------|-------|-------|
| CPU speed | Clock speed | Multiplier | CLK1 | CLK2 | FREQ1 | FREQ2 |
| 120MHz | 50MHz | 2x | 2 & 3 | 2 & 3 | 2 & 3 | 1 & 2 |
| 133MHz | 55MHz | 2x | 1 & 2 | 1 & 2 | 2 & 3 | 1 & 2 |
| 150MHz | 60MHz | 2x | 2 & 3 | 1 & 2 | 2 & 3 | 1 & 2 |
| 166MHz | 66MHz | 2x | 1 & 2 | 2 & 3 | 2 & 3 | 1 & 2 |

Note: Pins designated should be in the closed position.

| CPU SPEED SELECTION (IBM) | | | | | | |
|---------------------------|-------------|------------|-------|-------|-------|-------|
| CPU speed | Clock speed | Multiplier | CLK1 | CLK2 | FREQ1 | FREQ2 |
| 120MHz | 50MHz | 2x | 2 & 3 | 2 & 3 | 2 & 3 | 1 & 2 |
| 133MHz | 55MHz | 2x | 1 & 2 | 1 & 2 | 2 & 3 | 1 & 2 |
| 150MHz | 60MHz | 2x | 2 & 3 | 1 & 2 | 2 & 3 | 1 & 2 |
| 166MHz | 66MHz | 2x | 1 & 2 | 2 & 3 | 2 & 3 | 1 & 2 |

Note: Pins designated should be in the closed position.

| CPU SPEED SELECTION (AMD) | | | | | | |
|---------------------------|-------------|------------|-------|-------|-------|-------|
| CPU speed | Clock speed | Multiplier | CLK1 | CLK2 | FREQ1 | FREQ2 |
| 75MHz | 50MHz | 1.5x | 2 & 3 | 2 & 3 | 1 & 2 | 1 & 2 |
| 90MHz | 60MHz | 1.5x | 2 & 3 | 1 & 2 | 1 & 2 | 1 & 2 |
| 100MHz | 66MHz | 1.5x | 1 & 2 | 2 & 3 | 1 & 2 | 1 & 2 |
| 120MHz | 60MHz | 1.5x | 2 & 3 | 1 & 2 | 1 & 2 | 1 & 2 |
| 133MHz | 66MHz | 1.5x | 1 & 2 | 2 & 3 | 1 & 2 | 1 & 2 |
| 150MHz | 60MHz | 2x | 2 & 3 | 1 & 2 | 2 & 3 | 1 & 2 |
| 166MHz | 66MHz | 2x | 1 & 2 | 2 & 3 | 2 & 3 | 1 & 2 |

Note: Pins designated should be in the closed position.

| CPU SPEED SELECTION (INTEL) | | | | | | |
|-----------------------------|-------------|------------|-------|-------|-------|-------|
| CPU speed | Clock speed | Multiplier | CLK1 | CLK2 | FREQ1 | FREQ2 |
| 75MHz | 50MHz | 1.5x | 2 & 3 | 2 & 3 | 1 & 2 | 1 & 2 |
| 90MHz | 60MHz | 1.5x | 2 & 3 | 1 & 2 | 1 & 2 | 1 & 2 |
| 100MHz | 66MHz | 1.5x | 1 & 2 | 2 & 3 | 1 & 2 | 1 & 2 |
| 120MHz | 60MHz | 2x | 2 & 3 | 1 & 2 | 2 & 3 | 1 & 2 |
| 133MHz | 66MHz | 2x | 1 & 2 | 2 & 3 | 2 & 3 | 1 & 2 |
| 150MHz | 60MHz | 2.5x | 2 & 3 | 1 & 2 | 2 & 3 | 2 & 3 |
| 166MHz | 66MHz | 2.5x | 1 & 2 | 2 & 3 | 2 & 3 | 2 & 3 |
| 180MHz | 60MHz | 3x | 2 & 3 | 1 & 2 | 1 & 2 | 2 & 3 |
| 200MHz | 66MHz | 3x | 1 & 2 | 2 & 3 | 1 & 2 | 2 & 3 |

Note: Pins designated should be in the closed position.

| CPU VOLTAGE SELECTION (SINGLE) | | |
|--------------------------------|-------------------|--------------------------|
| Voltage | VR1 | VR2 |
| 3.3v | Pins 3 & 4 closed | Pins 1 & 2, 3 & 4 closed |
| 3.4v – 3.6v | Pins 1 & 2 closed | Pins 1 & 2, 3 & 4 closed |

Continued on next page. ...

FIRST INTERNATIONAL COMPUTER, INC.

VA - 501

... continued from previous page

| CPU VOLTAGE SELECTION (DUAL) | | | |
|------------------------------|--------|--------|--------------|
| Voltage | V core | VR1 | VR2 |
| 3.3v | 2.5v | 9 & 10 | 5 & 6, 7 & 8 |
| 3.3v | 2.7v | 7 & 8 | 5 & 6, 7 & 8 |
| 3.3v | 2.8v | 7 & 8 | 5 & 6, 7 & 8 |
| 3.3v | 2.9v | 7 & 8 | 5 & 6, 7 & 8 |

Note: Pins designated should be in the closed position.

| FLASH BIOS VOLTAGE SELECTION | | |
|------------------------------|-------------------|-------------------|
| Voltage | EP1 | EP2 |
| 5v | Pins 2 & 3 closed | Pins 2 & 3 closed |
| 12v | Pins 1 & 2 closed | Pins 1 & 2 closed |