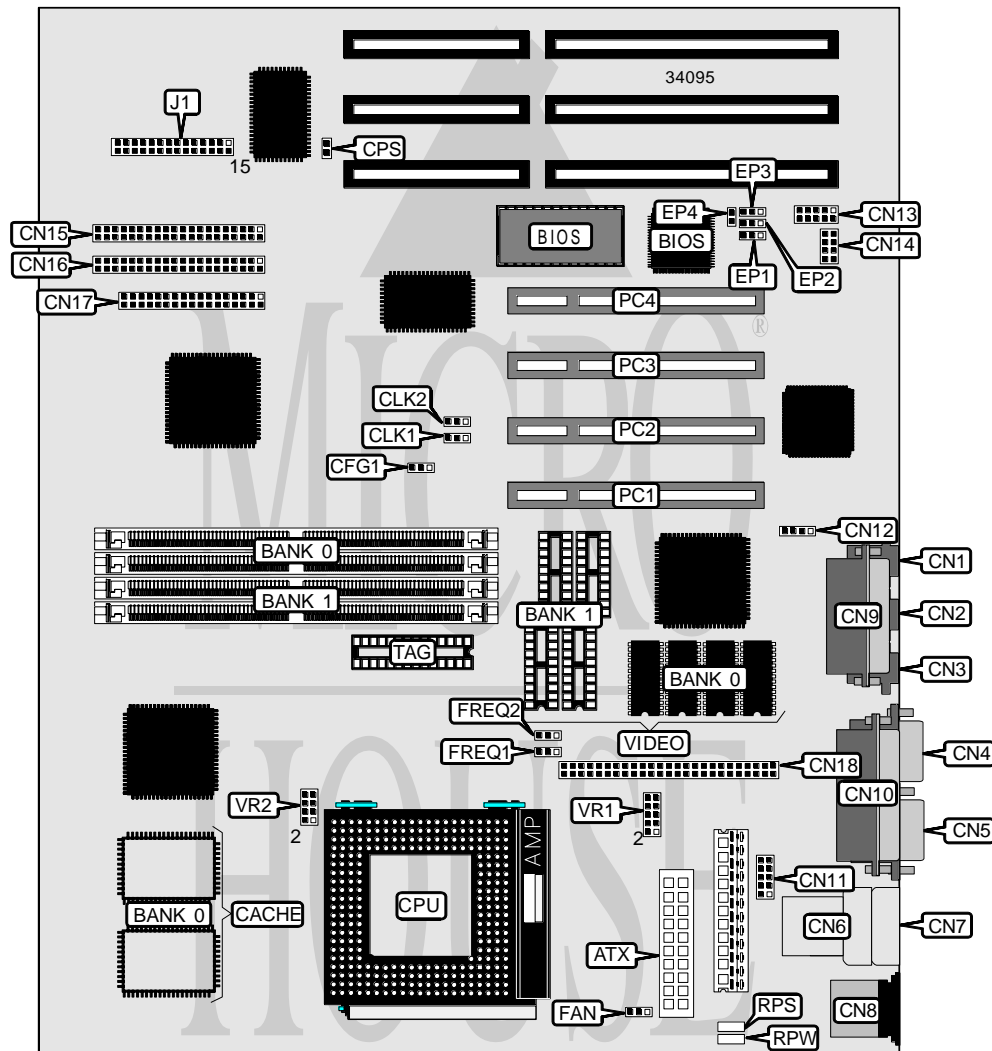


FIRST INTERNATIONAL COMPUTER, INC.

PTK - 2 1 1 0

Processor	CX M1/IBM/AM K5/Pentium
Processor Speed	75/90/100/120/133/150/166/200MHz
Chip Set	Intel
Video Chip Set	S3
Maximum Onboard Memory	512MB (EDO supported)
Maximum Video Memory	4MB
Cache	256/512KB
BIOS	Unidentified
Dimensions	305mm x 244mm
I/O Options	32-bit PCI slots (4), CD-ROM audio in, floppy drive interface, game port, green PC connector, IDE interfaces (2), parallel port, PS/2 mouse port, serial ports (2), VGA port, IR connector, USB connectors (2), ATX power connector, microphone connector, line in out, line in, MPEG connector, wavetable connector
NPU Options	None



Continued on next page. . .

FIRST INTERNATIONAL COMPUTER, INC.
PTK-2110

... continued from previous page

CONNECTIONS			
Purpose	Location	Purpose	Location
ATX power connector	ATX	IDE interface 1	CN16
Microphone in connector	CN1	Floppy drive interface	CN17
Line in connector	CN2	MPEG connector	CN18
Line out connector	CN3	Chassis fan power	FAN
VGA port	CN4	Power LED & keylock	J1 pins 1 - 5
Serial port 1	CN5	Turbo LED	J1 pins 7 & 8
USB connector 1	CN6	Green PC connector	J1 pins 10 & 11
USB connector 2	CN7	Green PC LED	J1 pins 13 & 14
PS/2 mouse port	CN8	Speaker	J1 pins 15 - 18
Game port	CN9	IDE interface LED	J1 pins 20 & 21
Parallel port	CN10	Remote control power	J1 pins 23 & 24
Serial port 2	CN11	Reset switch	J1 pins 27 & 28
CD-ROM audio in	CN12	32-bit PCI slots	PC1 - PC4
IR connector	CN13	Remote control power switch	RPW
Wavetable connector	CN14	Remote control power	RPS
IDE interface 2	CN15		

USER CONFIGURABLE SETTINGS		
Function	Label	Position
í USB frequency select 48MHz	CFG1	Pins 1 & 2 closed
USB frequency select 24MHz	CFG1	Pins 2 & 3 closed
í Password disabled	CPS	Open
Password enabled	CPS	Closed

DRAM CONFIGURATION		
Size	Bank 0	Bank 1
8MB	(2) 1M x 36	None
16MB	(2) 2M x 36	None
16MB	(2) 1M x 36	(2) 1M x 36
24MB	(2) 2M x 36	(2) 1M x 36
32MB	(2) 4M x 36	None
32MB	(2) 2M x 36	(2) 2M x 36
40MB	(2) 4M x 36	(2) 1M x 36
48MB	(2) 4M x 36	(2) 2M x 36
64MB	(2) 8M x 36	None
64MB	(2) 4M x 36	(2) 4M x 36
72MB	(2) 8M x 36	(2) 1M x 36
80MB	(2) 8M x 36	(2) 2M x 36
96MB	(2) 8M x 36	(2) 4M x 36
128MB	(2) 8M x 36	(2) 8M x 36
128MB	(2) 16M x 36	None

Continued on next page. ...

FIRST INTERNATIONAL COMPUTER, INC.

PTK-2110

... continued from previous page

DRAM CONFIGURATION (CON'T)		
Size	Bank 0	Bank 1
136MB	(2) 16M x 36	(2) 1M x 36
144MB	(2) 16M x 36	(2) 2M x 36
160MB	(2) 16M x 36	(2) 4M x 36
192MB	(2) 16M x 36	(2) 8M x 36
256MB	(2) 16M x 36	(2) 16M x 36
256MB	(2) 32M x 36	None
264MB	(2) 32M x 36	(2) 1M x 36
272MB	(2) 32M x 36	(2) 2M x 36
288MB	(2) 32M x 36	(2) 4M x 36
320MB	(2) 32M x 36	(2) 8M x 36
384MB	(2) 32M x 36	(2) 16M x 36
512MB	(2) 32M x 36	(2) 32M x 36

Note: Board accepts EDO memory.

CACHE CONFIGURATION		
Size	Bank 0	TAG
256KB	(2) 32K x 32	(1) 16K/32K x 8
512KB	(2) 64K x 32	(1) 16K/32K x 8

VIDEO MEMORY CONFIGURATION		
Size	Bank 0	Bank 1
2MB	(4) 256K x 16	None
4MB	(4) 256K x 16	(4) 256K x 16

CPU SPEED SELECTION (CYRIX)						
CPU speed	Clock speed	Multiplier	CLK1	CLK2	FREQ1	FREQ2
120MHz	50MHz	2x	2 & 3	2 & 3	2 & 3	1 & 2
133MHz	55MHz	2x	2 & 3	2 & 3	2 & 3	1 & 2
150MHz	60MHz	2x	1 & 2	2 & 3	2 & 3	1 & 2
150MHz	60MHz	2.5x	2 & 3	1 & 2	2 & 3	2 & 3
166MHz	66MHz	2x	1 & 2	2 & 3	2 & 3	1 & 2
166MHz	66MHz	2.5x	2 & 3	1 & 2	2 & 3	2 & 3
180MHz	60MHz	3x	1 & 2	2 & 3	1 & 2	2 & 3
200MHz	66MHz	3.5x	2 & 3	1 & 2	1 & 2	1 & 2

Note: Pins designated should be in the closed position.

Continued on next page. . .

FIRST INTERNATIONAL COMPUTER, INC.

PTK - 2110

... continued from previous page

CPU SPEED SELECTION (IBM)						
CPU speed	Clock speed	Multiplier	CLK1	CLK2	FREQ1	FREQ2
120MHz	50MHz	2x	2 & 3	2 & 3	2 & 3	1 & 2
133MHz	55MHz	2x	2 & 3	2 & 3	2 & 3	1 & 2
150MHz	60MHz	2x	1 & 2	2 & 3	2 & 3	1 & 2
150MHz	60MHz	2.5x	2 & 3	1 & 2	2 & 3	2 & 3
166MHz	66MHz	2x	1 & 2	2 & 3	2 & 3	1 & 2
166MHz	66MHz	2.5x	2 & 3	1 & 2	2 & 3	2 & 3
180MHz	60MHz	3x	1 & 2	2 & 3	1 & 2	2 & 3
200MHz	66MHz	3.5x	2 & 3	1 & 2	1 & 2	1 & 2

Note: Pins designated should be in the closed position.

CPU SPEED SELECTION (AMD)						
CPU speed	Clock speed	Multiplier	CLK1	CLK2	FREQ1	FREQ2
75MHz	50MHz	1.5x	2 & 3	2 & 3	1 & 2	1 & 2
90MHz	60MHz	1.5x	1 & 2	2 & 3	1 & 2	1 & 2
100MHz	66MHz	1.5x	2 & 3	1 & 2	1 & 2	1 & 2
120MHz	60MHz	1.5x	1 & 2	2 & 3	1 & 2	1 & 2
133MHz	66MHz	1.5x	2 & 3	1 & 2	1 & 2	1 & 2
150MHz	60MHz	1.75x	1 & 2	2 & 3	2 & 3	2 & 3
166MHz	66MHz	1.75x	2 & 3	1 & 2	2 & 3	2 & 3
200MHz	66MHz	2x	2 & 3	1 & 2	2 & 3	1 & 2

Note: Pins designated should be in the closed position.

CPU SPEED SELECTION (INTEL)						
CPU speed	Clock speed	Multiplier	CLK1	CLK2	FREQ1	FREQ2
75MHz	50MHz	1.5x	2 & 3	2 & 3	1 & 2	1 & 2
90MHz	60MHz	1.5x	1 & 2	2 & 3	1 & 2	1 & 2
100MHz	66MHz	1.5x	2 & 3	1 & 2	1 & 2	1 & 2
120MHz	60MHz	2x	1 & 2	2 & 3	2 & 3	1 & 2
133MHz	66MHz	2x	2 & 3	1 & 2	2 & 3	1 & 2
150MHz	60MHz	2.5x	1 & 2	2 & 3	2 & 3	2 & 3
166MHz	66MHz	2.5x	2 & 3	1 & 2	2 & 3	2 & 3
200MHz	66MHz	3x	2 & 3	1 & 2	1 & 2	2 & 3

Note: Pins designated should be in the closed position.

CPU VOLTAGE SELECTION (SINGLE)		
Voltage	VR1	VR2
3.3v	Pins 3 & 4 closed	Pins 1 & 2, 3 & 4 closed
3.4v – 3.6v	Pins 1 & 2 closed	Pins 1 & 2, 3 & 4 closed

CPU VOLTAGE SELECTION (CYRIX, DUAL)			
Voltage	V core	VR1	VR2
3.3v	2.8v	9 & 10	5 & 6, 7 & 8

Note: Pins designated should be in the closed position.

Continued on next page. . .

FIRST INTERNATIONAL COMPUTER, INC.
PTK-2110

... continued from previous page

CPU VOLTAGE SELECTION (IBM, DUAL)			
Voltage	V core	VR1	VR2
3.3v	2.8v	9 & 10	5 & 6, 7 & 8

Note: Pins designated should be in the closed position.

CPU VOLTAGE SELECTION (AMD, DUAL)			
Voltage	V core	VR1	VR2
3.3v	2.5v	9 & 10	1 & 2, 3 & 4
3.3v	2.8v	7 & 8	5 & 6, 7 & 8
3.3v	2.9v	5 & 6	5 & 6, 7 & 8

Note: Pins designated should be in the closed position.

CPU VOLTAGE SELECTION (INTEL, DUAL)			
Voltage	V core	VR1	VR2
3.3v	2.5v	9 & 10	1 & 2, 3 & 4
3.3v	2.8v	7 & 8	5 & 6, 7 & 8
3.3v	2.9v	5 & 6	5 & 6, 7 & 8

Note: Pins designated should be in the closed position.

FLASH BIOS SELECTION (1MB)				
Setting	EP1	EP2	EP3	EP4
í SST 29EE010	Pins 2 & 3 closed	Pins 2 & 3 closed	Open	Open
Intel 28F001BX-T	Pins 1 & 2 closed	Pins 1 & 2 closed	Open	Open

FLASH BIOS SELECTION (2MB)				
Setting	EP1	EP2	EP3	EP4
AMD	Open	Open	Pins 2 & 3 closed	Closed
ATMIC	Open	Pins 2 & 3 closed	Pins 2 & 3 closed	Open
MIXC	Open	Pins 1 & 2 closed	Pins 2 & 3 closed	Open
SST	Open	Pins 2 & 3 closed	Pins 2 & 3 closed	Open