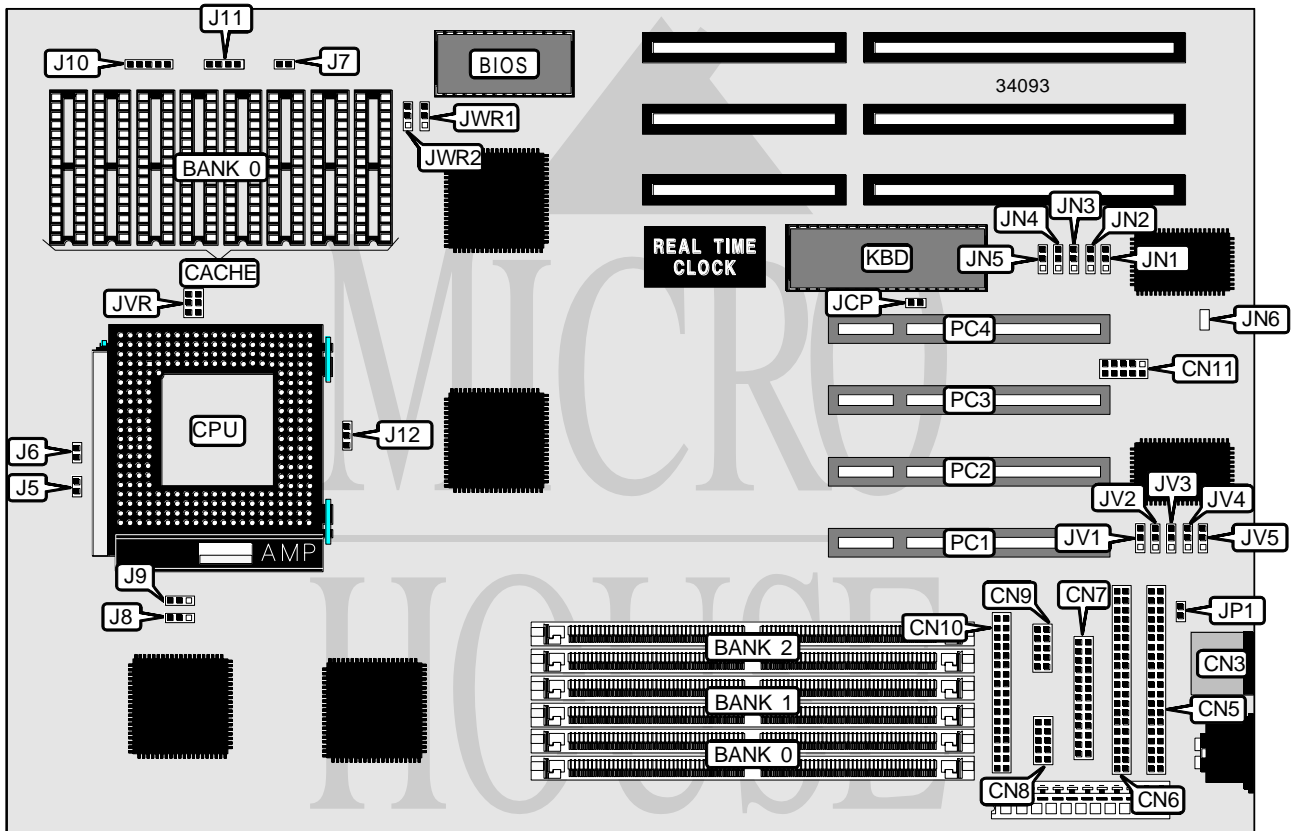


FIRST INTERNATIONAL COMPUTER, INC. PN-2000 (REV. B0)

Processor	Pentium
Processor Speed	75/90/100MHz
Chip Set	Intel
Video Chip Set	None
Maximum Onboard Memory	192MB
Maximum Video Memory	None
Cache	256/512KB
BIOS	Award
Dimensions	330mm x 218mm
I/O Options	32-bit PCI slots (4), floppy drive interface, IDE interfaces (2), parallel port, PS/2 mouse port, serial ports (2), IR connector
NPU Options	None



Continued on next page. . .

FIRST INTERNATIONAL COMPUTER, INC.
PN-2000 (REV. B0)

... continued from previous page

CONNECTIONS			
Purpose	Location	Purpose	Location
PS/2 mouse port	CN3	IR connector	CN11
IDE interface 1	CN5	Reset switch	J7
IDE interface 2	CN6	Power LED & keylock	J10
Parallel port	CN7	Speaker	J11
Serial port 1	CN8	IDE interface LED	JP1
Serial port 2	CN9	32-bit PCI slots	PC1 – PC4
Floppy drive interface	CN10		

USER CONFIGURABLE SETTINGS		
Function	Label	Position
í CPU pipeline mode enabled	J5	Closed
CPU pipeline mode disabled	J5	Open
í Cache write select write back	J6	Open
Cache write select write through	J6	Closed
í Factory configured - do not alter (CPU bus frequency)	J12	Pins 2 & 3 closed
í Password disabled	JCP	Open
Password enabled	JCP	Closed
í Parallel port output enabled	JN2	Pins 2 & 3 closed
Parallel port output disabled	JN2	Pins 1 & 2 closed
í Parallel port direction select output	JN3	Pins 2 & 3 closed
Parallel port direction select input	JN3	Pins 1 & 2 closed
í Factory configured - do not alter	JN6	Unidentified
í Factory configured - do not alter	JV1	Unidentified
í Factory configured - do not alter	JV2	Unidentified
í Factory configured - do not alter	JV3	Unidentified
í Factory configured - do not alter	JV4	Unidentified
í Factory configured - do not alter	JV5	Unidentified

DRAM CONFIGURATION			
Size	Bank 0	Bank 1	Bank 2
2MB	(2) 256K x 36	None	None
4MB	(2) 256K x 36	(2) 256K x 36	None
6MB	(2) 256K x 36	(2) 256K x 36	(2) 256K x 36
8MB	(2) 1M x 36	None	None
10MB	(2) 1M x 36	(2) 256K x 36	None
12MB	(2) 1M x 36	(2) 256K x 36	(2) 256K x 36
16MB	(2) 1M x 36	(2) 1M x 36	None
18MB	(2) 1M x 36	(2) 1M x 36	(2) 256K x 36
24MB	(2) 1M x 36	(2) 1M x 36	(2) 1M x 36
32MB	(2) 4M x 36	None	None
34MB	(2) 4M x 36	(2) 256K x 36	None

Continued on next page. ...

FIRST INTERNATIONAL COMPUTER, INC.

PN-2000 (REV. B0)

... continued from previous page

DRAM CONFIGURATION (CON'T)			
Size	Bank 0	Bank 1	Bank 2
36MB	(2) 4M x 36	(2) 256K x 36	(2) 256K x 36
40MB	(2) 4M x 36	(2) 1M x 36	None
42MB	(2) 4M x 36	(2) 1M x 36	(2) 256K x 36
48MB	(2) 4M x 36	(2) 1M x 36	(2) 1M x 36
64MB	(2) 4M x 36	(2) 4M x 36	None
64MB	(2) 8M x 36	None	None
66MB	(2) 4M x 36	(2) 4M x 36	(2) 256K x 36
66MB	(2) 8M x 36	(2) 256K x 36	None
68MB	(2) 8M x 36	(2) 256K x 36	(2) 256K x 36
72MB	(2) 4M x 36	(2) 4M x 36	(2) 1M x 36
72MB	(2) 8M x 36	(2) 1M x 36	None
74MB	(2) 8M x 36	(2) 1M x 36	(2) 256K x 36
80MB	(2) 8M x 36	(2) 1M x 36	(2) 1M x 36
96MB	(2) 4M x 36	(2) 4M x 36	(2) 4M x 36
96MB	(2) 8M x 36	(2) 4M x 36	None
98MB	(2) 8M x 36	(2) 4M x 36	(2) 256K x 36
104MB	(2) 8M x 36	(2) 4M x 36	(2) 1M x 36
128MB	(2) 8M x 36	(2) 4M x 36	(2) 4M x 36
128MB	(2) 8M x 36	(2) 8M x 36	None
130MB	(2) 8M x 36	(2) 8M x 36	(2) 256K x 36
136MB	(2) 8M x 36	(2) 8M x 36	(2) 1M x 36
160MB	(2) 8M x 36	(2) 8M x 36	(2) 4M x 36
192MB	(2) 8M x 36	(2) 8M x 36	(2) 8M x 36

CACHE CONFIGURATION	
Size	Bank 0
256KB	(8) 32K x 8
512KB	(8) 64K x 8

CACHE JUMPER CONFIGURATION		
Size	J8	J9
256KB	Pins 2 & 3 closed	Pins 1 & 2 closed
512KB	Pins 2 & 3 closed	Pins 2 & 3 closed

CACHE VOLTAGE CONFIGURATION		
Voltage	JWR1	JWR2
3.3v	Pins 1 & 2 closed	Pins 1 & 2 closed
Mixed 5v	Pins 2 & 3 closed	Pins 2 & 3 closed

Continued on next page. . .

FIRST INTERNATIONAL COMPUTER, INC.
PN-2000 (REV. B0)

... continued from previous page

CPU VOLTAGE SELECTION	
Voltage	JVR
3.3v	Pins 1 & 2 closed
3.45v	Pins 3 & 4 closed
3.6v	Pins 5 & 6 closed

DMA CHANNEL SELECTION		
Channel	JN4	JN5
1	Pins 2 & 3 closed	Pins 2 & 3 closed
í 3	Pins 1 & 2 closed	Pins 1 & 2 closed

BASE I/O ADDRESS SELECTION		
Base address	Data address	JN1
26EH	26FH	Pins 1 & 2 closed
í 398H	399H	Pins 2 & 3 closed