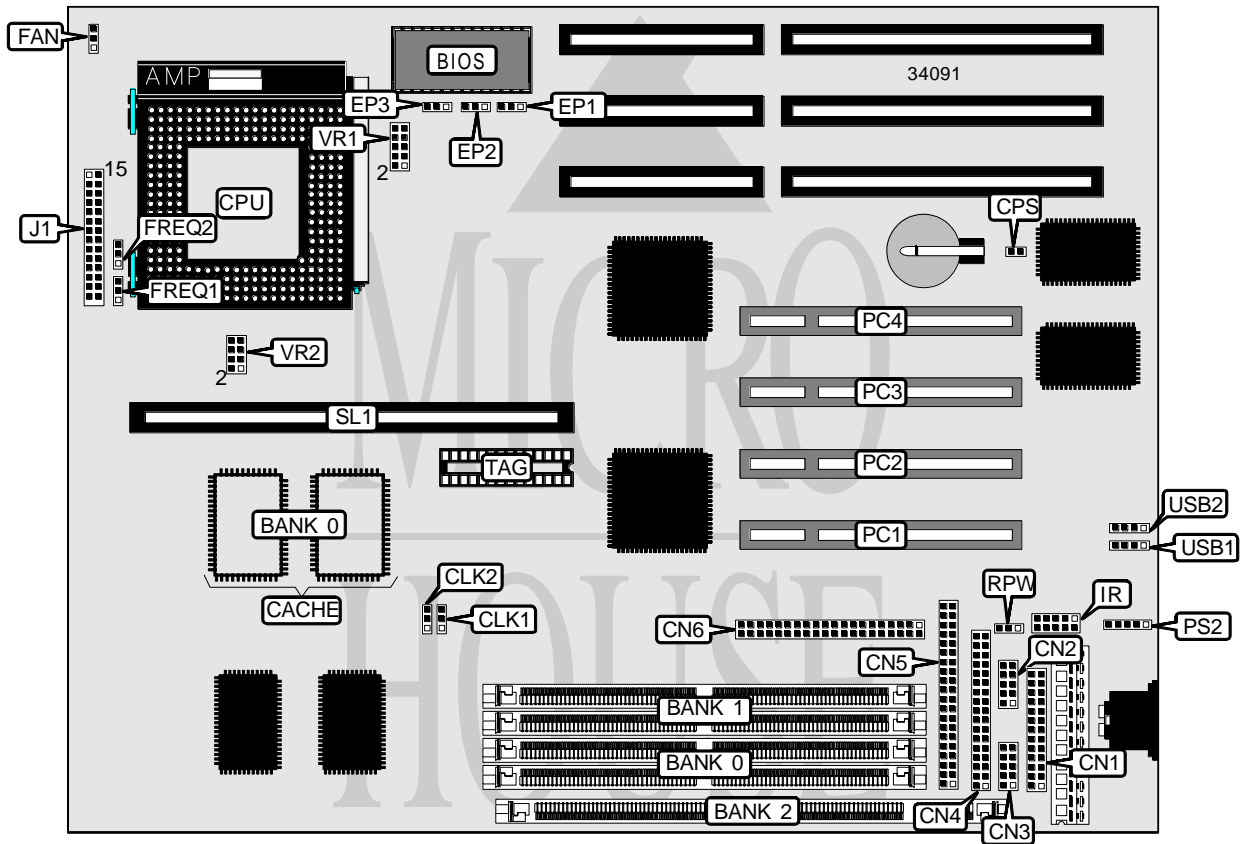


# FIRST INTERNATIONAL COMPUTER, INC. PT-2006

<b>Processor</b>	CX M1/IBM/AM K5/Pentium
<b>Processor Speed</b>	75/90/100/120/133/150/166/200MHz
<b>Chip Set</b>	Intel
<b>Video Chip Set</b>	None
<b>Maximum Onboard Memory</b>	128MB (EDO supported)
<b>Maximum Video Memory</b>	None
<b>Cache</b>	256/512KB
<b>BIOS</b>	Award
<b>Dimensions</b>	330mm x 218mm
<b>I/O Options</b>	32-bit PCI slots (4), floppy drive interface, green PC connector, IDE interfaces (2), parallel port, PS/2 mouse interface, serial ports (2), cache slot, IR connector, USB connectors (2), remote control power
<b>NPU Options</b>	None



Continued on next page...

# FIRST INTERNATIONAL COMPUTER, INC.

## PT-2006

... continued from previous page

CONNECTIONS			
Purpose	Location	Purpose	Location
Parallel port	CN1	Green PC LED	J1 pins 13 & 14
Serial port 2	CN2	Speaker	J1 pins 15 - 18
Serial port 1	CN3	IDE interface LED	J1 pins 20 & 21
Floppy drive interface	CN4	Remote control power	J1 pins 23 & 24
IDE interface 2	CN5	Reset switch	J1 pins 27 & 28
IDE interface 1	CN6	32-bit PCI slots	PC1 – PC4
Chassis fan power	FAN	PS/2 mouse interface	PS2
IR connector	IR	Remote control power	RPW
Power LED & keylock	J1 pins 1 - 5	Cache slot	SL1
Turbo LED	J1 pins 7 & 8	USB connector 1	USB1
Green PC connector	J1 pins 10 & 11	USB connector 2	USB2

USER CONFIGURABLE SETTINGS		
Function	Label	Position
í Password disabled	CPS	Open
Password enabled	CPS	Closed

DIMM/DRAM CONFIGURATION			
Size	Bank 0	Bank 1	Bank 2
8MB	(2) 1M x 36	None	None
8MB	None	None	(1) 1M x 64
16MB	(2) 2M x 36	None	None
16MB	(2) 1M x 36	(2) 1M x 36	None
16MB	(2) 1M x 36	None	(1) 1M x 64
24MB	(2) 2M x 36	(2) 1M x 36	None
24MB	(2) 2M x 36	None	(1) 1M x 64
32MB	(2) 4M x 36	None	None
32MB	(2) 2M x 36	(2) 2M x 36	None
32MB	(2) 2M x 36	None	(1) 2M x 64
40MB	(2) 4M x 36	(2) 1M x 36	None
40MB	(2) 4M x 36	None	(1) 1M x 64
48MB	(2) 4M x 36	(2) 2M x 36	None
48MB	(2) 4M x 36	None	(1) 2M x 64
64MB	(2) 8M x 36	None	None
64MB	(2) 4M x 36	(2) 4M x 36	None
72MB	(2) 8M x 36	(2) 1M x 36	None
72MB	(2) 8M x 36	None	(1) 1M x 64
80MB	(2) 8M x 36	(2) 2M x 36	None
80MB	(2) 8M x 36	None	(1) 2M x 64
96MB	(2) 8M x 36	(2) 4M x 36	None
128MB	(2) 8M x 36	(2) 8M x 36	None

Note: Board accepts EDO memory.

Continued on next page. . .

# FIRST INTERNATIONAL COMPUTER, INC.

## PT-2006

... continued from previous page

CACHE CONFIGURATION			
Size	Bank 0	SL1	TAG
256KB	(2) 32K x 32	Not installed	(1) 16K/32K x 8
256KB	None	256KB module installed	None
512KB	(2) 64K x 32	Not installed	(1) 16K/32K x 8
512KB	(2) 32K x 32	256KB module installed	(1) 16K/32K x 8
512KB	None	512KB module installed	None

CPU SPEED SELECTION (CYRIX)						
CPU speed	Clock speed	Multiplier	CLK1	CLK2	FREQ1	FREQ2
120MHz	50MHz	2x	2 & 3	2 & 3	2 & 3	1 & 2
133MHz	55MHz	2x	1 & 2	1 & 2	2 & 3	1 & 2
150MHz	60MHz	2x	1 & 2	2 & 3	2 & 3	1 & 2
166MHz	66MHz	2x	2 & 3	1 & 2	2 & 3	1 & 2
166MHz	66MHz	2.5x	2 & 3	1 & 2	2 & 3	2 & 3
180MHz	60MHz	3x	1 & 2	2 & 3	1 & 2	2 & 3
200MHz	66MHz	3x	2 & 3	1 & 2	1 & 2	2 & 3

Note: Pins designated should be in the closed position.

CPU SPEED SELECTION (IBM)						
CPU speed	Clock speed	Multiplier	CLK1	CLK2	FREQ1	FREQ2
120MHz	50MHz	2x	2 & 3	2 & 3	2 & 3	1 & 2
133MHz	55MHz	2x	1 & 2	1 & 2	2 & 3	1 & 2
150MHz	60MHz	2x	1 & 2	2 & 3	2 & 3	1 & 2
166MHz	66MHz	2x	2 & 3	1 & 2	2 & 3	1 & 2
166MHz	66MHz	2.5x	2 & 3	1 & 2	2 & 3	2 & 3
180MHz	60MHz	3x	1 & 2	2 & 3	1 & 2	2 & 3
200MHz	66MHz	3x	2 & 3	1 & 2	1 & 2	2 & 3

Note: Pins designated should be in the closed position.

CPU SPEED SELECTION (AMD)						
CPU speed	Clock speed	Multiplier	CLK1	CLK2	FREQ1	FREQ2
75MHz	50MHz	1.5x	2 & 3	2 & 3	1 & 2	1 & 2
90MHz	60MHz	1.5x	1 & 2	2 & 3	1 & 2	1 & 2
100MHz	66MHz	1.5x	2 & 3	1 & 2	1 & 2	1 & 2
120MHz	60MHz	1.5x	1 & 2	2 & 3	1 & 2	1 & 2
133MHz	66MHz	1.5x	2 & 3	1 & 2	1 & 2	1 & 2
150MHz	60MHz	2x	1 & 2	2 & 3	2 & 3	1 & 2
166MHz	66MHz	2x	2 & 3	1 & 2	2 & 3	1 & 2

Note: Pins designated should be in the closed position.

Continued on next page. . .

FIRST INTERNATIONAL COMPUTER, INC.  
PT-2006

... continued from previous page

CPU SPEED SELECTION (INTEL)						
CPU speed	Clock speed	Multiplier	CLK1	CLK2	FREQ1	FREQ2
75MHz	50MHz	1.5x	2 & 3	2 & 3	1 & 2	1 & 2
90MHz	60MHz	1.5x	1 & 2	2 & 3	1 & 2	1 & 2
100MHz	66MHz	1.5x	2 & 3	1 & 2	1 & 2	1 & 2
120MHz	60MHz	2x	1 & 2	2 & 3	2 & 3	1 & 2
133MHz	66MHz	2x	2 & 3	1 & 2	2 & 3	1 & 2
150MHz	60MHz	2.5x	1 & 2	2 & 3	2 & 3	2 & 3
166MHz	66MHz	2.5x	2 & 3	1 & 2	2 & 3	2 & 3
200MHz	66MHz	3x	2 & 3	1 & 2	1 & 2	2 & 3

Note: Pins designated should be in the closed position.

CPU VOLTAGE SELECTION (SINGLE)		
Voltage	VR1	VR2
3.3v	Pins 3 & 4 closed	Pins 5 & 6, 7 & 8 closed
3.4v – 3.6v	Pins 1 & 2 closed	Pins 5 & 6, 7 & 8 closed

CPU VOLTAGE SELECTION (DUAL)			
Voltage	V core	VR1	VR2
3.3v	2.5v	9 & 10	1 & 2, 3 & 4
3.3v	2.8v	7 & 8	1 & 2, 3 & 4
3.3v	2.9v	5 & 6	1 & 2, 3 & 4

Note: Pins designated should be in the closed position.

FLASH BIOS SELECTION			
Setting	EP1	EP2	EP3
í SST 29EE010	Pins 2 & 3 closed	Pins 2 & 3 closed	Open
SST 29EE020	Pins 2 & 3 closed	Open	Pins 2 & 3 closed
AMD 28F020	Pins 1 & 2 closed	Open	Pins 2 & 3 closed
Intel 28F001	Pins 1 & 2 closed	Pins 1 & 2 closed	Open