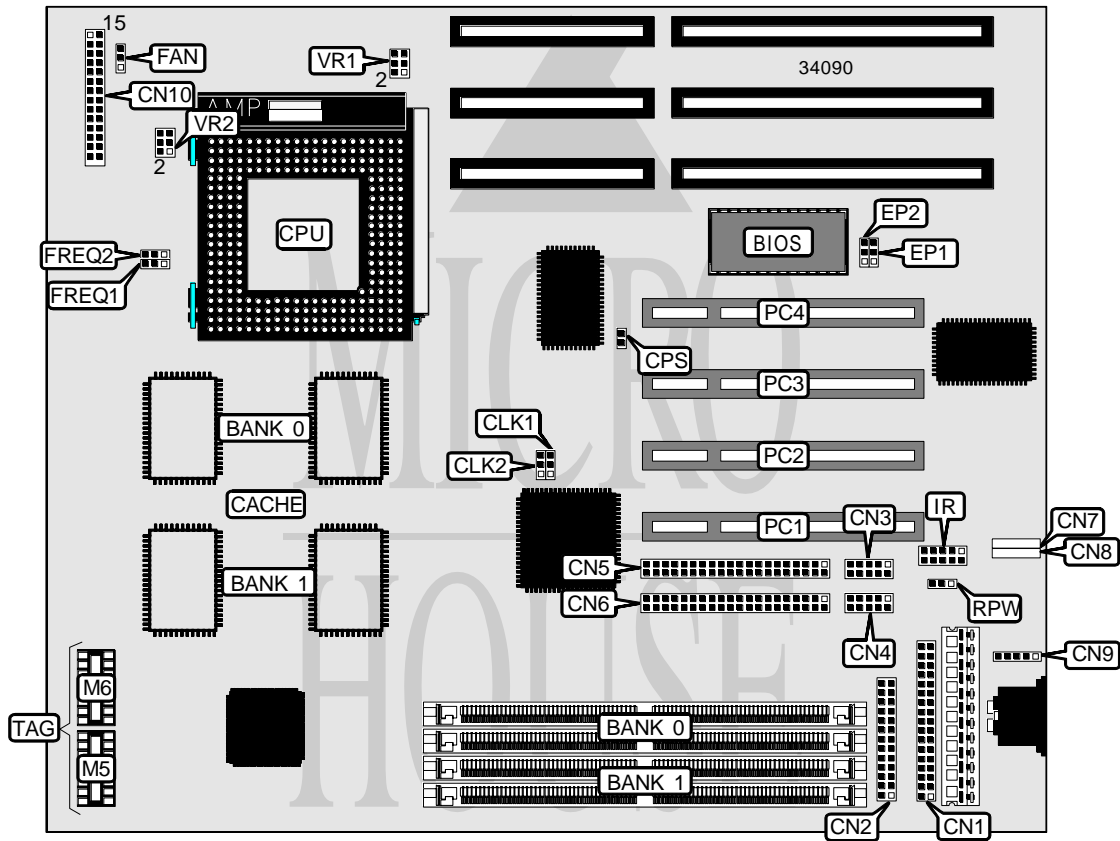


# FIRST INTERNATIONAL COMPUTER, INC. PT-2200 (REV. A2)

<b>Processor</b>	CX M1/IBM/AM K5/Pentium
<b>Processor Speed</b>	75/90/100/120/133/150/166/200MHz
<b>Chip Set</b>	Intel
<b>Video Chip Set</b>	None
<b>Maximum Onboard Memory</b>	512MB (EDO supported)
<b>Maximum Video Memory</b>	None
<b>Cache</b>	256/512KB
<b>BIOS</b>	AMI
<b>Dimensions</b>	254mm x 218mm
<b>I/O Options</b>	32-bit PCI slots (4), floppy drive interface, green PC connector, IDE interfaces (2), parallel port, PS/2 mouse interface, serial ports (2), IR connector, USB connectors (2), remote control power
<b>NPU Options</b>	None



Continued on next page. . .

# FIRST INTERNATIONAL COMPUTER, INC.

## PT-2200 (REV. A2)

... continued from previous page

CONNECTIONS			
Purpose	Location	Purpose	Location
Floppy drive interface	CN1	Green PC connector	CN10 pins 10 & 11
Parallel port	CN2	Green PC LED	CN10 pins 12 & 14
Serial port 2	CN3	Speaker	CN10 pins 15 & 18
Serial port 1	CN4	IDE interface LED	CN10 pins 20 & 21
IDE interface 2	CN5	Remote control power switch	CN10 pins 23 & 24
IDE interface 1	CN6	Reset switch	CN10 pins 27 & 28
USB connector	CN7	Chassis fan power	FAN
USB connector	CN8	IR connector	IR
PS/2 mouse interface	CN9	Remote control power connector	RPW
Power LED & keylock	CN10 pins 1 - 5	32-bit PCI slots	PC1 - PC4
Turbo LED	CN10 pins 7 & 8		

USER CONFIGURABLE SETTINGS		
Function	Label	Position
í Password normal operation	CPS	Open
Password clear	CPS	Closed

DRAM CONFIGURATION		
Size	Bank 0	Bank 1
8MB	(2) 1M x 36	None
16MB	(2) 2M x 36	None
24MB	(2) 2M x 36	(2) 1M x 36
32MB	(2) 4M x 36	None
40MB	(2) 4M x 36	(2) 1M x 36
48MB	(2) 4M x 36	(2) 2M x 36
64MB	(2) 8M x 36	None
64MB	(2) 4M x 36	(2) 4M x 36
72MB	(2) 8M x 36	(2) 1M x 36
80MB	(2) 8M x 36	(2) 2M x 36
96MB	(2) 8M x 36	(2) 4M x 36
128MB	(2) 8M x 36	(2) 8M x 36
136MB	(2) 16M x 36	(2) 1M x 36
144MB	(2) 16M x 36	(2) 2M x 36
160MB	(2) 16M x 36	(2) 4M x 36
192MB	(2) 16M x 36	(2) 8M x 36
256MB	(2) 16M x 36	(2) 16M x 36
512MB	(2) 32M x 36	(2) 32M x 36

Note: Board accepts EDO memory.

Continued on next page...

# FIRST INTERNATIONAL COMPUTER, INC.

## PT-2200 (REV. A2)

... continued from previous page

CACHE CONFIGURATION				
Size	Bank 0	Bank 1	M5	M6
256KB	(2) 32K x 32	None	(1) 16K/32K x 8	None
512KB	(2) 32K x 32	(2) 32K x 32	(1) 16K/32K x 8	None

CPU SPEED SELECTION (CYRIX)						
CPU speed	Clock speed	Multiplier	CLK1	CLK2	FREQ1	FREQ2
120MHz	50MHz	2x	2 & 3	2 & 3	2 & 3	1 & 2
133MHz	55MHz	2x	1 & 2	1 & 2	2 & 3	1 & 2
150MHz	60MHz	2x	2 & 3	1 & 2	2 & 3	1 & 2
166MHz	66MHz	2x	1 & 2	2 & 3	2 & 3	1 & 2

Note: Pins designated should be in the closed position.

CPU SPEED SELECTION (IBM)						
CPU speed	Clock speed	Multiplier	CLK1	CLK2	FREQ1	FREQ2
120MHz	50MHz	2x	2 & 3	2 & 3	2 & 3	1 & 2
133MHz	55MHz	2x	1 & 2	1 & 2	2 & 3	1 & 2
150MHz	60MHz	2x	2 & 3	1 & 2	2 & 3	1 & 2
166MHz	66MHz	2x	1 & 2	2 & 3	2 & 3	1 & 2

Note: Pins designated should be in the closed position.

CPU SPEED SELECTION (AMD)						
CPU speed	Clock speed	Multiplier	CLK1	CLK2	FREQ1	FREQ2
75MHz	50MHz	1.5x	2 & 3	2 & 3	1 & 2	1 & 2
90MHz	60MHz	1.5x	2 & 3	1 & 2	1 & 2	1 & 2
100MHz	66MHz	1.5x	1 & 2	2 & 3	1 & 2	1 & 2
120MHz	60MHz	1.5x	2 & 3	1 & 2	1 & 2	1 & 2
133MHz	66MHz	1.5x	1 & 2	2 & 3	1 & 2	1 & 2
150MHz	60MHz	2x	2 & 3	1 & 2	2 & 3	1 & 2
166MHz	66MHz	2x	1 & 2	2 & 3	2 & 3	1 & 2

Note: Pins designated should be in the closed position.

CPU SPEED SELECTION (INTEL)						
CPU speed	Clock speed	Multiplier	CLK1	CLK2	FREQ1	FREQ2
75MHz	50MHz	1.5x	2 & 3	2 & 3	1 & 2	1 & 2
90MHz	60MHz	1.5x	2 & 3	1 & 2	1 & 2	1 & 2
100MHz	66MHz	1.5x	1 & 2	2 & 3	1 & 2	1 & 2
120MHz	60MHz	2x	2 & 3	1 & 2	2 & 3	1 & 2
133MHz	66MHz	2x	1 & 2	2 & 3	2 & 3	1 & 2
150MHz	60MHz	2.5x	2 & 3	1 & 2	2 & 3	2 & 3
166MHz	66MHz	2.5x	1 & 2	2 & 3	2 & 3	2 & 3
200MHz	66MHz	3x	1 & 2	2 & 3	1 & 2	2 & 3

Note: Pins designated should be in the closed position.

Continued on next page. . .

# FIRST INTERNATIONAL COMPUTER, INC.

## PT-2200 (REV. A2)

... continued from previous page

CPU VOLTAGE SELECTION (SINGLE)		
Voltage	VR1	VR2
3.384v	Pins 1 & 2 closed	Pins 3 & 4, 5 & 6 closed
3.4v – 3.6v	Pins 3 & 4 closed	Pins 3 & 4, 5 & 6 closed

CPU VOLTAGE SELECTION (DUAL)			
Voltage	V core	VR1	VR2
3.3v	2.5v	Pins 5 & 6 closed	Pins 1 & 2 closed

FLASH BIOS SELECTION		
Type	EP1	EP2
í SST 29EE010	Pins 2 & 3 closed	Pins 2 & 3 closed
Intel 28F010	Pins 1 & 2 closed	Pins 2 & 3 closed
Intel 28F001BX-T	Pins 1 & 2 closed	Pins 1 & 2 closed