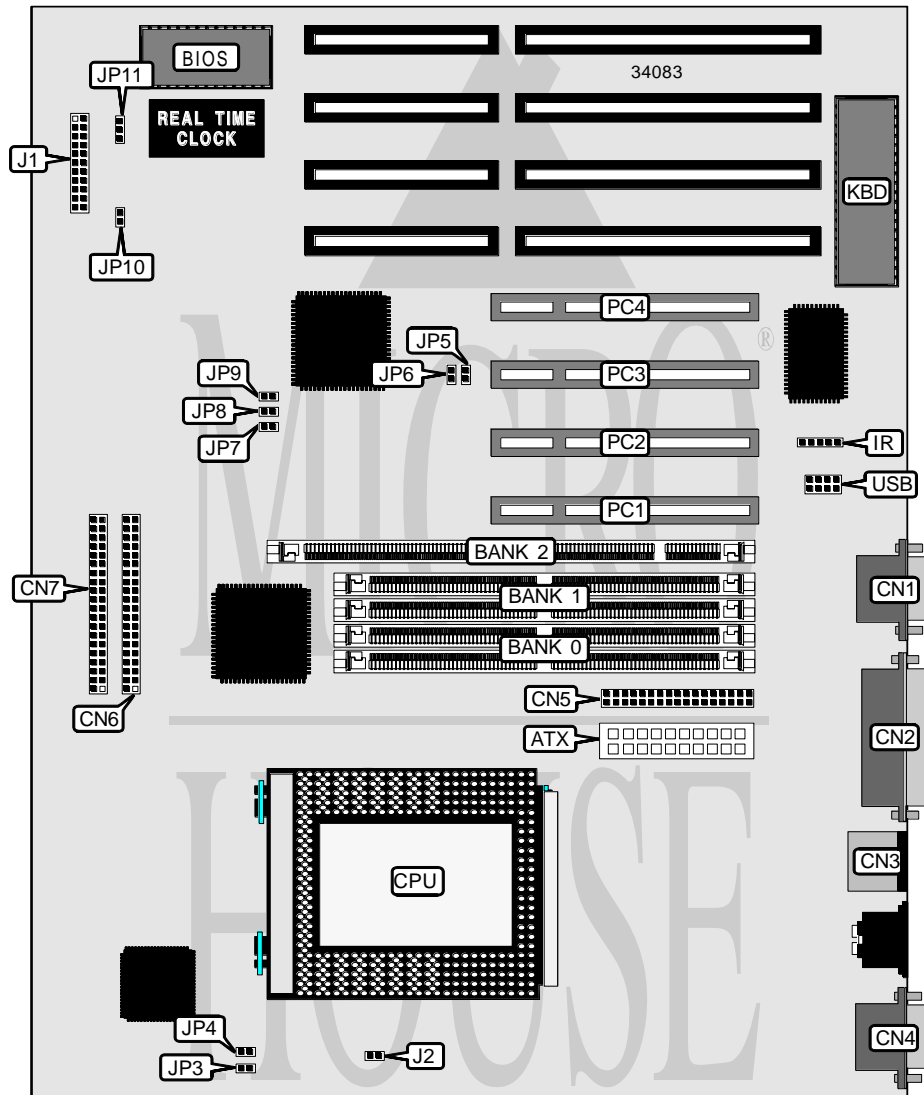


A-TREND TECHNOLOGY CORPORATION

ATC-6020

Processor	Pentium Pro
Processor Speed	150/166/180/200MHz
Chip Set	Intel
Video Chip Set	None
Maximum Onboard Memory	256MB (EDO supported)
Maximum Video Memory	None
Cache	256/512KB (located on Pentium Pro CPU)
BIOS	Award
Dimensions	305mm x 244mm
I/O Options	32-bit PCI slots (4), floppy drive interface, green PC connector, IDE interfaces (2), parallel port, PS/2 mouse port, serial ports (2), IR connector, USB connector, ATX power connector
NPU Options	None



Continued on next page. . .

A-TREND TECHNOLOGY CORPORATION

ATC-6020

... continued from previous page

CONNECTIONS			
Purpose	Location	Purpose	Location
ATX power connector	ATX	Green PC connector	J1 pins 4 & 5
Serial port 2	CN1	Turbo LED	J1 pins 7 & 8
Parallel port	CN2	IDE interface LED	J1 pins 10 & 11
PS/2 mouse port	CN3	Speaker	J1 pins 12 - 15
Serial port 1	CN4	Power LED & keylock	J1 pins 17 - 21
Floppy drive interface	CN5	Soft off power supply	J2
IDE interface 2	CN6	Chassis fan power	JP11
IDE interface 1	CN7	32-bit PCI slots	PC1 - PC4
IR connector	IR	USB connector	USB
Reset switch	J1 pins 1 & 2		

USER CONFIGURABLE SETTINGS		
Function	Label	Position
í CMOS memory normal operation	JP10	Open
CMOS memory clear	JP10	Closed

DIMM CONFIGURATION	
Size	Bank 2
8MB	(1) 1M x 64
16MB	(1) 2M x 64
32MB	(1) 4M x 64
64MB	(1) 8M x 64

Note: Do not install DIMM and SIMM at the same time.

DRAM CONFIGURATION		
Size	Bank 0	Bank 1
8MB	(2) 1M x 36	None
16MB	(2) 2M x 36	None
16MB	(2) 1M x 36	(2) 1M x 36
24MB	(2) 2M x 36	(2) 1M x 36
32MB	(2) 4M x 36	None
32MB	(2) 2M x 36	(2) 2M x 36
40MB	(2) 4M x 36	(2) 1M x 36
48MB	(2) 4M x 36	(2) 2M x 36
64MB	(2) 8M x 36	None
64MB	(2) 4M x 36	(2) 4M x 36
72MB	(2) 8M x 36	(2) 1M x 36
80MB	(2) 8M x 36	(2) 2M x 36
96MB	(2) 8M x 36	(2) 4M x 36
128MB	(2) 8M x 36	(2) 8M x 36
128MB	(2) 16M x 36	None

Continued on next page. ...

A-TREND TECHNOLOGY CORPORATION

ATC-6020

... continued from previous page

DRAM CONFIGURATION (CON'T)		
Size	Bank 0	Bank 1
136MB	(2) 16M x 36	(2) 1M x 36
144MB	(2) 16M x 36	(2) 2M x 36
160MB	(2) 16M x 36	(2) 4M x 36
192MB	(2) 16M x 36	(2) 8M x 36
256MB	(2) 16M x 36	(2) 16M x 36

Note: Board accepts EDO memory. Banks are interchangeable.

CACHE CONFIGURATION
Note: 256KB/512KB cache is located on the Pentium Pro CPU.

CPU SPEED SELECTION						
CPU speed	Clock speed	Multiplier	JP3	JP4	JP5	JP6
150MHz	60MHz	2.5x	Open	Closed	Closed	Open
166MHz	66MHz	2.5x	Closed	Open	Open	Closed
180MHz	60MHz	3x	Open	Closed	Closed	Open
200MHz	66MHz	3x	Closed	Open	Open	Closed

CPU SPEED SELECTION (CON'T)					
CPU speed	Clock speed	Multiplier	JP7	JP8	JP9
150MHz	60MHz	2.5x	Closed	Closed	Open
166MHz	66MHz	2.5x	Closed	Closed	Open
180MHz	60MHz	3x	Closed	Open	Closed
200MHz	66MHz	3x	Closed	Open	Closed