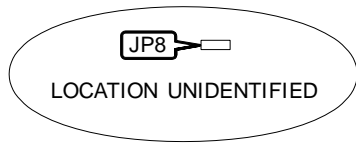
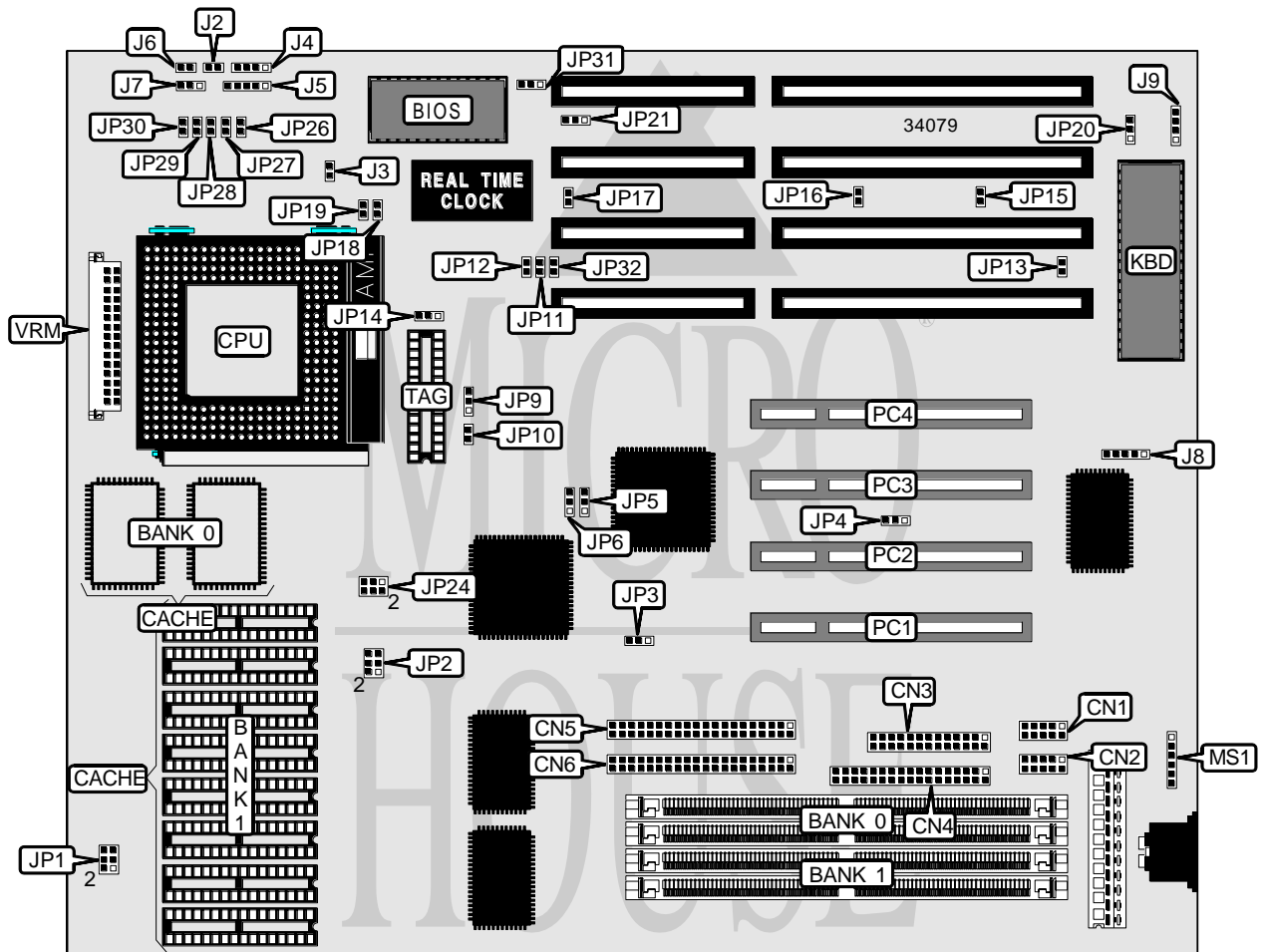


# J-MARK COMPUTER CORPORATION

## J - 6 5 6 B

<b>Processor</b>	Pentium
<b>Processor Speed</b>	75/90/100/120/133/150/180/200MHz
<b>Chip Set</b>	Intel
<b>Video Chip Set</b>	None
<b>Maximum Onboard Memory</b>	128MB (EDO supported)
<b>Maximum Video Memory</b>	None
<b>Cache</b>	256/512KB
<b>BIOS</b>	Award
<b>Dimensions</b>	330mm x 218mm
<b>I/O Options</b>	32-bit PCI slots (4), floppy drive interface, IDE interfaces (2), parallel port, PS/2 mouse interface, serial ports (2), VRM connector. IR connector
<b>NPU Options</b>	None



Continued on next page. . .

# J-MARK COMPUTER CORPORATION

## J - 6 5 6 B

... continued from previous page

CONNECTIONS			
Purpose	Location	Purpose	Location
Serial port 2	CN1	Speaker	J4
Serial port 1	CN2	Power LED & keylock	J5
Parallel port	CN3	Turbo LED	J6
Floppy drive interface	CN4	Turbo switch	J7
IDE interface 2	CN5	IR connector	JP8
IDE interface 1	CN6	PS/2 mouse interface	MS1
Reset switch	J2	32-bit PCI slots	PC1 – PC4
IDE interface LED	J3	VRM connector	VRM

USER CONFIGURABLE SETTINGS		
Function	Label	Position
í Factory configured - do not alter	J8	Unidentified
í Factory configured - do not alter	J9	Unidentified
í PCI CLK select CLK/4	JP3	Pins 2 & 3 closed
PCI CLK select CLK/3	JP3	Pins 1 & 2 closed
í I/O address select 250 HEX	JP4	Pins 2 & 3 closed
I/O address select 3F0 HEX	JP4	Pins 1 & 2 closed
í IDE interface 1 IRQ select IRQ14	JP5	Pins 1 & 2 closed
IDE interface 1 IRQ select MIRQ1	JP5	Pins 2 & 3 closed
í IDE interface 2 IRQ select IRQ15	JP6	Pins 1 & 2 closed
IDE interface 2 IRQ select MIRQ0	JP6	Pins 2 & 3 closed
í Factory configured - do not alter	JP9	Unidentified
í Green PC disabled	JP10	Open
Green PC enabled	JP10	Closed
í Factory configured - do not alter	JP13	Unidentified
í Factory configured - do not alter	JP15	Unidentified
í Factory configured - do not alter	JP16	Unidentified
í CMOS memory normal operation	JP17	Open
CMOS memory clear	JP17	Closed
í CPU type select write back	JP18	Open
CPU type select write through	JP18	Closed
í CPU pipeline enabled	JP19	Closed
CPU pipeline disabled	JP19	Open
í Factory configured - do not alter	JP20	Unidentified
í Factory configured - do not alter	JP24	Unidentified
í Factory configured - do not alter	JP32	Unidentified

DRAM CONFIGURATION		
Size	Bank 0	Bank 1
8MB	(2) 1M x 36	None
16MB	(2) 2M x 36	None
16MB	(2) 1M x 36	(2) 1M x 36
24MB	(2) 2M x 36	(2) 1M x 36

Continued on next page. . .

# J-MARK COMPUTER CORPORATION

## J - 6 5 6 B

... continued from previous page

DRAM CONFIGURATION (CON'T)		
Size	Bank 0	Bank 1
32MB	(2) 4M x 36	None
32MB	(2) 2M x 36	(2) 2M x 36
40MB	(2) 4M x 36	(2) 1M x 36
48MB	(2) 4M x 36	(2) 2M x 36
64MB	(2) 8M x 36	None
64MB	(2) 4M x 36	(2) 4M x 36
72MB	(2) 8M x 36	(2) 1M x 36
80MB	(2) 8M x 36	(2) 2M x 36
96MB	(2) 8M x 36	(2) 4M x 36
128MB	(2) 8M x 36	(2) 8M x 36

Note: Board accepts EDO memory. Board also accepts x 32 SIMMs. Banks are interchangeable.

CACHE CONFIGURATION			
Size	Bank 0	Bank 1	TAG
256KB (A)	(2) 32K x 32	None	(1) 8K x 8
256KB (B)	None	(8) 32K x 8	(1) 8K x 8
512KB (A)	(2) 64K x 32	None	(1) 16K/32K x 8
512KB (B)	None	(8) 64K x 8	(1) 16K/32K x 8

CACHE JUMPER CONFIGURATION	
Size	JP14
256KB (A)	Pins 1 & 2 closed
256KB (B)	Pins 1 & 2 closed
512KB (A)	Pins 2 & 3 closed
512KB (B)	Pins 2 & 3 closed

CACHE VOLTAGE CONFIGURATION		
Voltage	JP1	JP2
3v synchronous	Open	Pins 1 & 2, 3 & 4, 5 & 6 closed
3v asynchronous	Open	Pins 1 & 2, 3 & 4, 5 & 6 closed
5v mixed asynchronous	Pins 1 & 2, 3 & 4, 5 & 6 closed	Open

CPU SPEED SELECTION						
CPU speed	Clock speed	Multiplier	JP11	JP12	JP26	JP27
75MHz	50MHz	1.5x	Open	Open	Open	Open
90MHz	60MHz	1.5x	Open	Closed	Open	Open
100MHz	66MHz	1.5x	Closed	Closed	Open	Open
120MHz	60MHz	2x	Open	Closed	Open	Closed
133MHz	66MHz	2x	Closed	Closed	Open	Closed
150MHz	60MHz	2.5x	Open	Closed	Closed	Closed
180MHz	60MHz	3x	Open	Closed	Closed	Open
200MHz	66MHz	3x	Closed	Closed	Closed	Open

Continued on next page. . .

## J-MARK COMPUTER CORPORATION

## J - 6 5 6 B

*... continued from previous page*

CPU VOLTAGE SELECTION			
Voltage	JP28	JP29	JP30
3.3v	Closed	Open	Open
3.45v	Open	Closed	Open
3.6v	Open	Open	Closed

BIOS SELECTION		
Setting	JP21	JP31
EPROM	Pins 1 & 2 closed	Pins 2 & 3 closed
í 12v flash	Pins 2 & 3 closed	Pins 1 & 2 closed
5v flash	Pins 2 & 3 closed	Pins 2 & 3 closed