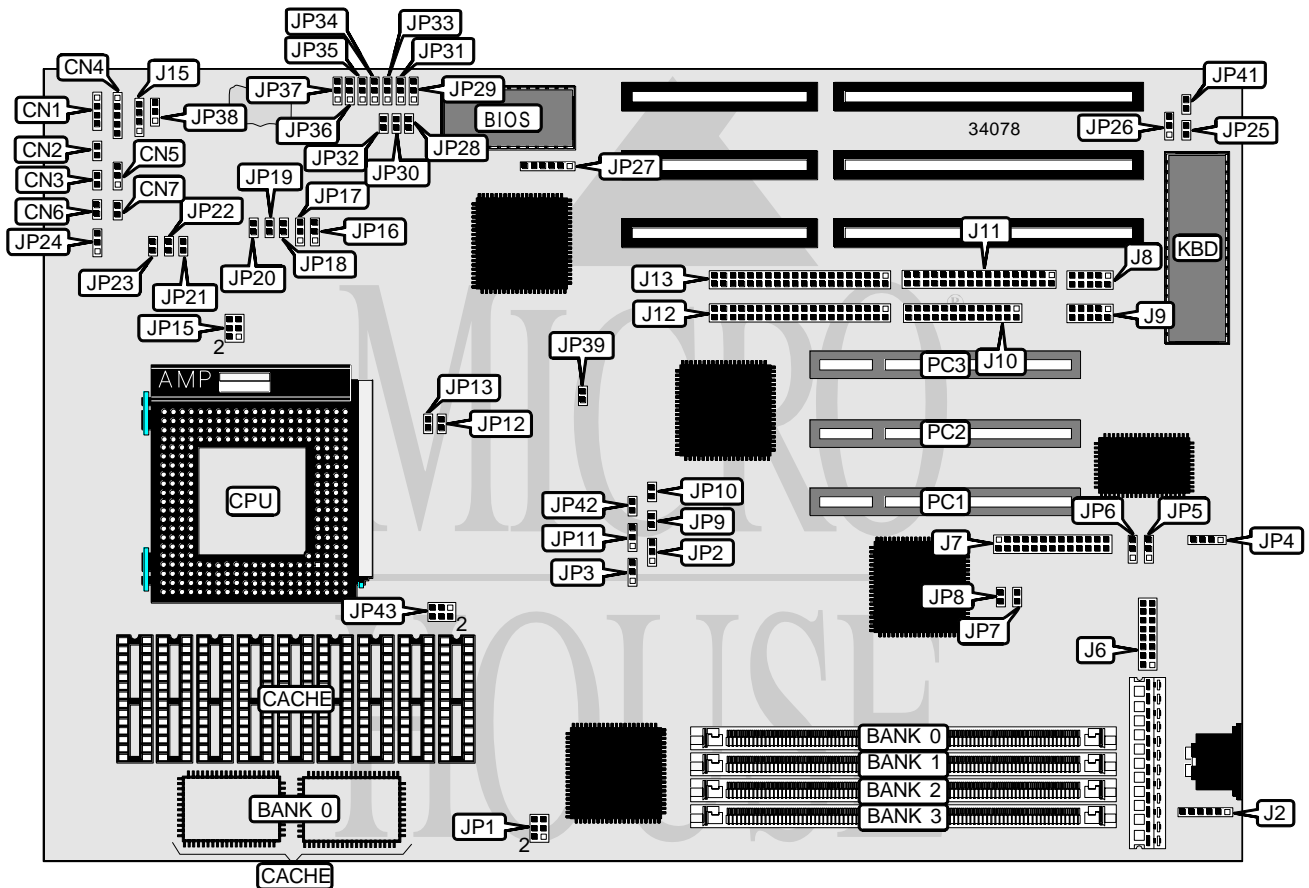


# J-MARK COMPUTER CORPORATION

## J - 6 4 6 B

|                               |   |
|-------------------------------|---|
| <b>Processor</b>              | Pentium   |
| <b>Processor Speed</b>        | 75/90/100/120/133/150/166MHz  |
| <b>Chip Set</b>               | SIS   |
| <b>Video Chip Set</b>         | None  |
| <b>Maximum Onboard Memory</b> | 128MB (EDO supported)   |
| <b>Maximum Video Memory</b>   | None  |
| <b>Cache</b>                  | 256/512/1024KB  |
| <b>BIOS</b>                   | Award   |
| <b>Dimensions</b>             | 330mm x 218mm   |
| <b>I/O Options</b>            | 32-bit PCI slots (3), floppy drive interface, IDE interfaces (2), parallel port, PS/2 mouse interface, serial ports (2) |
| <b>NPU Options</b>            | None  |



Continued on next page. . .

# J-MARK COMPUTER CORPORATION

## J - 6 4 6 B

... continued from previous page

| CONNECTIONS           |          |                        |           |
|-----------------------|----------|------------------------|-----------|
| Purpose               | Location | Purpose                | Location  |
| Speaker               | CN1      | Serial port 2          | J8        |
| Reset switch          | CN2      | Serial port 1          | J9        |
| Turbo LED             | CN3      | Parallel port          | J10       |
| Power LED & keylock   | CN4      | Floppy drive interface | J11       |
| Turbo switch          | CN5      | IDE interface 1        | J12       |
| IDE interface LED     | CN6      | IDE interface 2        | J13       |
| BK LED                | CN7      | External battery       | J15       |
| PS/2 mouse interface  | J2       | 32-bit PCI slots       | PC1 – PC3 |
| VGA feature connector | J7       |                        |           |

| USER CONFIGURABLE SETTINGS          |       |                   |
|-------------------------------------|-------|-------------------|
| Function                            | Label | Position          |
| í Factory configured - do not alter | J6    | Unidentified      |
| í Factory configured - do not alter | JP4   | Unidentified      |
| í Factory configured - do not alter | JP5   | Unidentified      |
| í Factory configured - do not alter | JP6   | Unidentified      |
| í Factory configured - do not alter | JP7   | Unidentified      |
| í Factory configured - do not alter | JP9   | Open              |
| í Factory configured - do not alter | JP15  | Unidentified      |
| í CPU write select write back       | JP16  | Pins 1 & 2 closed |
| CPU write select write through      | JP16  | Pins 2 & 3 closed |
| í CPU pipeline enabled              | JP17  | Pins 2 & 3 closed |
| CPU pipeline disabled               | JP17  | Pins 1 & 2 closed |
| í Suspend mode disabled             | JP20  | Open              |
| Suspend mode enabled                | JP20  | Closed            |
| í Break switch for suspend mode     | JP24  | Pins 2 & 3 closed |
| 8042 RC enabled                     | JP24  | Pins 1 & 2 closed |
| í Monitor type select monochrome    | JP25  | Open              |
| Monitor type select color           | JP25  | Closed            |
| í Factory configured - do not alter | JP26  | Unidentified      |
| í Factory configured - do not alter | JP27  | Unidentified      |
| í Factory configured - do not alter | JP28  | Unidentified      |
| í Factory configured - do not alter | JP29  | Unidentified      |
| í Factory configured - do not alter | JP30  | Unidentified      |
| í Factory configured - do not alter | JP31  | Unidentified      |
| í Factory configured - do not alter | JP32  | Unidentified      |
| í Factory configured - do not alter | JP33  | Unidentified      |
| í Factory configured - do not alter | JP34  | Unidentified      |
| í Factory configured - do not alter | JP35  | Unidentified      |
| í Factory configured - do not alter | JP36  | Unidentified      |
| í Factory configured - do not alter | JP37  | Unidentified      |

Continued on next page. . .

# J-MARK COMPUTER CORPORATION

## J - 6 4 6 B

... continued from previous page

| USER CONFIGURABLE SETTINGS (CON'T)  |       |                   |
|-------------------------------------|-------|-------------------|
| Function                            | Label | Position          |
| í CMOS memory normal operation      | JP38  | Pins 1 & 2 closed |
| CMOS memory clear                   | JP38  | Pins 2 & 3 closed |
| í PCICLK speed select 1/2 CPU CLK   | JP39  | Closed            |
| PCICLK speed select = 32MHz         | JP39  | Open              |
| í PS/2 IRQ12 enabled                | JP41  | Closed            |
| PS/2 IRQ12 disabled                 | JP41  | Open              |
| í Factory configured - do not alter | JP42  | Unidentified      |

| DRAM CONFIGURATION |             |             |             |             |
|--------------------|-------------|-------------|-------------|-------------|
| Size               | Bank 0      | Bank 1      | Bank 2      | Bank 3      |
| 4MB                | (1) 1M x 36 | None        | None        | None        |
| 8MB                | (1) 2M x 36 | None        | None        | None        |
| 8MB                | (1) 1M x 36 | (1) 1M x 36 | None        | None        |
| 16MB               | (1) 4M x 36 | None        | None        | None        |
| 16MB               | (1) 2M x 36 | (1) 2M x 36 | None        | None        |
| 16MB               | (1) 1M x 36 | (1) 1M x 36 | (1) 1M x 36 | (1) 1M x 36 |
| 24MB               | (1) 1M x 36 | (1) 1M x 36 | (1) 2M x 36 | (1) 2M x 36 |
| 32MB               | (1) 8M x 36 | None        | None        | None        |
| 32MB               | (1) 4M x 36 | (1) 4M x 36 | None        | None        |
| 32MB               | (1) 2M x 36 | (1) 2M x 36 | (1) 2M x 36 | (1) 2M x 36 |
| 40MB               | (1) 4M x 36 | (1) 4M x 36 | (1) 1M x 36 | (1) 1M x 36 |
| 48MB               | (1) 4M x 36 | (1) 4M x 36 | (1) 2M x 36 | (1) 2M x 36 |
| 64MB               | (1) 4M x 36 | (1) 4M x 36 | (1) 4M x 36 | (1) 4M x 36 |
| 72MB               | (1) 8M x 36 | (1) 8M x 36 | (1) 1M x 36 | (1) 1M x 36 |
| 80MB               | (1) 8M x 36 | (1) 8M x 36 | (1) 2M x 36 | (1) 2M x 36 |
| 96MB               | (1) 8M x 36 | (1) 8M x 36 | (1) 4M x 36 | (1) 4M x 36 |
| 128MB              | (1) 8M x 36 | (1) 8M x 36 | (1) 8M x 36 | (1) 8M x 36 |

Note: Board accepts EDO memory. Board also accepts x 32 SIMMs.

| DRAM VOLTAGE CONFIGURATION |                          |
|----------------------------|--------------------------|
| Voltage                    | JP1                      |
| í Mixed mode               | Pins 3 & 5, 4 & 6 closed |
| 3.3v                       | Pins 1 & 3, 2 & 4 closed |

| CACHE CONFIGURATION |              |              |                         |
|---------------------|--------------|--------------|-------------------------|
| Size                | Bank 0       | Bank 1       | TAG                     |
| 256KB (A)           | None         | (8) 32K x 8  | (1) 8K x 8              |
| 256KB (B)           | (2) 32K x 32 | None         | Unidentified            |
| 512KB (A)           | None         | (8) 64K x 8  | (1) 16K x 8 (Windbond)  |
| 512KB (B)           | None         | (8) 64K x 8  | (1) 16K/32K x 8 (Aster) |
| 1MB                 | None         | (8) 128K x 8 | (1) 32K x 8             |

Note: The location of bank 1 & TAG are unidentified.

Continued on next page. . .

## J-MARK COMPUTER CORPORATION

## J - 6 4 6 B

... continued from previous page

| CACHE JUMPER CONFIGURATION |                   |                   |        |
|----------------------------|-------------------|-------------------|--------|
| Size                       | JP3               | JP11              | JP42   |
| 256KB (A)                  | Pins 1 & 2 closed | Pins 1 & 2 closed | Open   |
| 256KB (B)                  | Pins 1 & 2 closed | Pins 1 & 2 closed | Open   |
| 512KB (A)                  | Pins 2 & 3 closed | Open              | Closed |
| 512KB (B)                  | Pins 2 & 3 closed | Pins 1 & 2 closed | Open   |
| 1MB                        | Pins 2 & 3 closed | Pins 2 & 3 closed | Open   |

| CPU SPEED SELECTION |             |            |        |        |        |        |
|---------------------|-------------|------------|--------|--------|--------|--------|
| CPU speed           | Clock speed | Multiplier | JP12   | JP13   | JP18   | JP19   |
| 75MHz               | 50MHz       | 1.5x       | Closed | Closed | Open   | Open   |
| 90MHz               | 60MHz       | 1.5x       | Closed | Open   | Open   | Open   |
| 100MHz              | 66MHz       | 1.5x       | Open   | Closed | Open   | Open   |
| 120MHz              | 60MHz       | 2x         | Closed | Open   | Open   | Closed |
| 133MHz              | 66MHz       | 2x         | Open   | Closed | Open   | Closed |
| 150MHz              | 60MHz       | 2.5x       | Closed | Open   | Closed | Closed |
| 166MHz              | 66MHz       | 2.5x       | Open   | Closed | Closed | Closed |

| CPU VOLTAGE SELECTION |        |        |        |
|-----------------------|--------|--------|--------|
| Voltage               | JP21   | JP22   | JP23   |
| 3.3v                  | Closed | Open   | Open   |
| 3.45v                 | Open   | Closed | Open   |
| 3.6v                  | Open   | Open   | Closed |

| VGA SELECTION     |                   |        |        |
|-------------------|-------------------|--------|--------|
| Setting           | JP2               | JP8    | JP10   |
| Onboard VGA       | Pins 1 & 2 closed | Closed | Closed |
| External VGA card | Pins 2 & 3 closed | Open   | Open   |