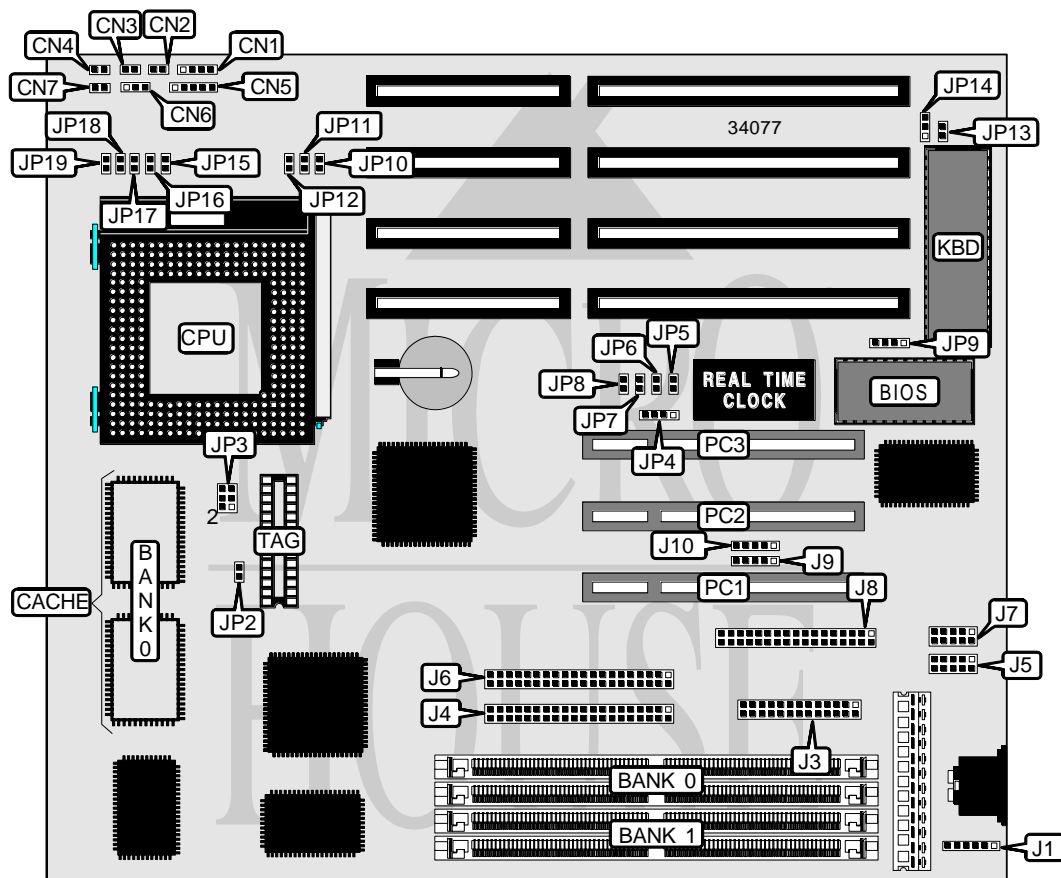


J-MARK COMPUTER CORPORATION

J - 6 5 6 V X C

Processor	CX M1/AM K5/Pentium
Processor Speed	75/90/100/120/133/150/166/200MHz
Chip Set	Intel
Video Chip Set	None
Maximum Onboard Memory	128MB (EDO supported)
Maximum Video Memory	None
Cache	256/512KB
BIOS	Award
Dimensions	254mm x 218mm
I/O Options	32-bit PCI slots (3), floppy drive interface, green PC connector, IDE interfaces (2), parallel port, PS/2 mouse interface, serial ports (2), USB connectors (2)
NPU Options	None



Continued on next page. . .

J-MARK COMPUTER CORPORATION

J - 6 5 6 V X C

... continued from previous page

CONNECTIONS			
Purpose	Location	Purpose	Location
Speaker	CN1	IDE interface 1	J4
Reset switch	CN2	Serial port 2	J5
Turbo LED	CN3	IDE interface 2	J6
IDE interface LED	CN4	Serial port 1	J7
Power LED & keylock	CN5	Floppy drive interface	J8
Turbo switch	CN6	USB connector	J9
Green PC connector	CN7	USB connector	J10
PS/2 mouse interface	J1	External battery	JP4
Parallel port	J3	32-bit PCI slots	PC1 – PC4

USER CONFIGURABLE SETTINGS		
Function	Label	Position
í Factory configured - do not alter	JP2	Unidentified
í Factory configured - do not alter	JP9	Unidentified
Monitor type select color	JP13	Closed
Monitor type select monochrome	JP13	Open
Flash BIOS voltage select 12v	JP14	Pins 1 & 2 closed
Flash BIOS voltage select 5v	JP14	Pins 2 & 3 closed

DRAM CONFIGURATION		
Size	Bank 0	Bank 1
8MB	(2) 1M x 36	None
16MB	(2) 2M x 36	None
16MB	(2) 1M x 36	(2) 1M x 36
24MB	(2) 2M x 36	(2) 1M x 36
32MB	(2) 4M x 36	None
32MB	(2) 2M x 36	(2) 2M x 36
40MB	(2) 4M x 36	(2) 1M x 36
48MB	(2) 4M x 36	(2) 2M x 36
64MB	(2) 8M x 36	None
64MB	(2) 4M x 36	(2) 4M x 36
72MB	(2) 8M x 36	(2) 1M x 36
80MB	(2) 8M x 36	(2) 2M x 36
96MB	(2) 8M x 36	(2) 4M x 36
128MB	(2) 8M x 36	(2) 8M x 36

Continued on next page. . .

J-MARK COMPUTER CORPORATION

J - 6 5 6 V X C

... continued from previous page

CACHE CONFIGURATION		
Size	Bank 0	TAG
256KB	(2) 32K x 32	(1) 32K x 8
512KB	(2) 64K x 32	(1) 32K x 8

CPU SPEED SELECTION (CYRIX)							
CPU speed	Clock speed	Multiplier	JP6	JP7	JP8	JP18	JP19
120MHz	50MHz	2x	Closed	Closed	Open	Closed	Open
133MHz	55MHz	2x	Open	Open	Open	Closed	Open
150MHz	60MHz	2x	Open	Closed	Open	Closed	Open
166MHz	66MHz	2x	Closed	Open	Open	Closed	Open

CPU SPEED SELECTION (AMD)							
CPU speed	Clock speed	Multiplier	JP6	JP7	JP8	JP18	JP19
90MHz	60MHz	1.5x	Open	Closed	Open	Open	Open
100MHz	66MHz	1.5x	Closed	Open	Open	Open	Open

CPU SPEED SELECTION (INTEL)							
CPU speed	Clock speed	Multiplier	JP6	JP7	JP8	JP18	JP19
75MHz	50MHz	1.5x	Closed	Closed	Open	Open	Open
90MHz	60MHz	1.5x	Open	Closed	Open	Open	Open
100MHz	66MHz	1.5x	Closed	Open	Open	Open	Open
120MHz	60MHz	2x	Open	Closed	Open	Closed	Open
133MHz	66MHz	2x	Closed	Open	Open	Closed	Open
150MHz	60MHz	2.5x	Open	Closed	Open	Closed	Closed
166MHz	66MHz	2.5x	Closed	Open	Open	Closed	Closed
200MHz	66MHz	3x	Closed	Open	Open	Open	Closed

CPU TYPE SELECTION	
Type	JP3
P54C	Pins 1 & 2, 3 & 4, 5 & 6 closed
P55C	Open

CPU VOLTAGE SELECTION (SINGLE)			
Voltage	JP15	JP16	JP17
3.3v	Closed	Open	Open
3.45v	Open	Closed	Open
3.52v	Open	Open	Closed

Continued on next page. . .

J-MARK COMPUTER CORPORATION

J - 6 5 6 V X C

... continued from previous page

CPU VOLTAGE SELECTION (DUAL)							
Voltage	V core	JP10	JP11	JP12	JP15	JP16	JP17
3.3v	2.5v	Closed	Open	Open	Closed	Open	Open
3.3v	2.8v	Open	Closed	Open	Closed	Open	Open
3.3v	3.45v	Open	Open	Closed	Closed	Open	Open
3.45v	2.5v	Closed	Open	Open	Open	Open	Open
3.45v	2.8v	Open	Closed	Open	Open	Closed	Open
3.45v	3.45v	Open	Open	Closed	Open	Closed	Open
3.52v	2.5v	Closed	Open	Open	Open	Open	Closed
3.52v	2.8v	Open	Closed	Open	Open	Closed	Closed
3.52v	3.45v	Open	Open	Closed	Open	Open	Closed

CMOS SELECTION		
Setting	JP4	JP5
í CMOS memory normal operation	Pins 2 & 3 closed	Open
CMOS memory clear	Pins 3 & 4 closed	Closed