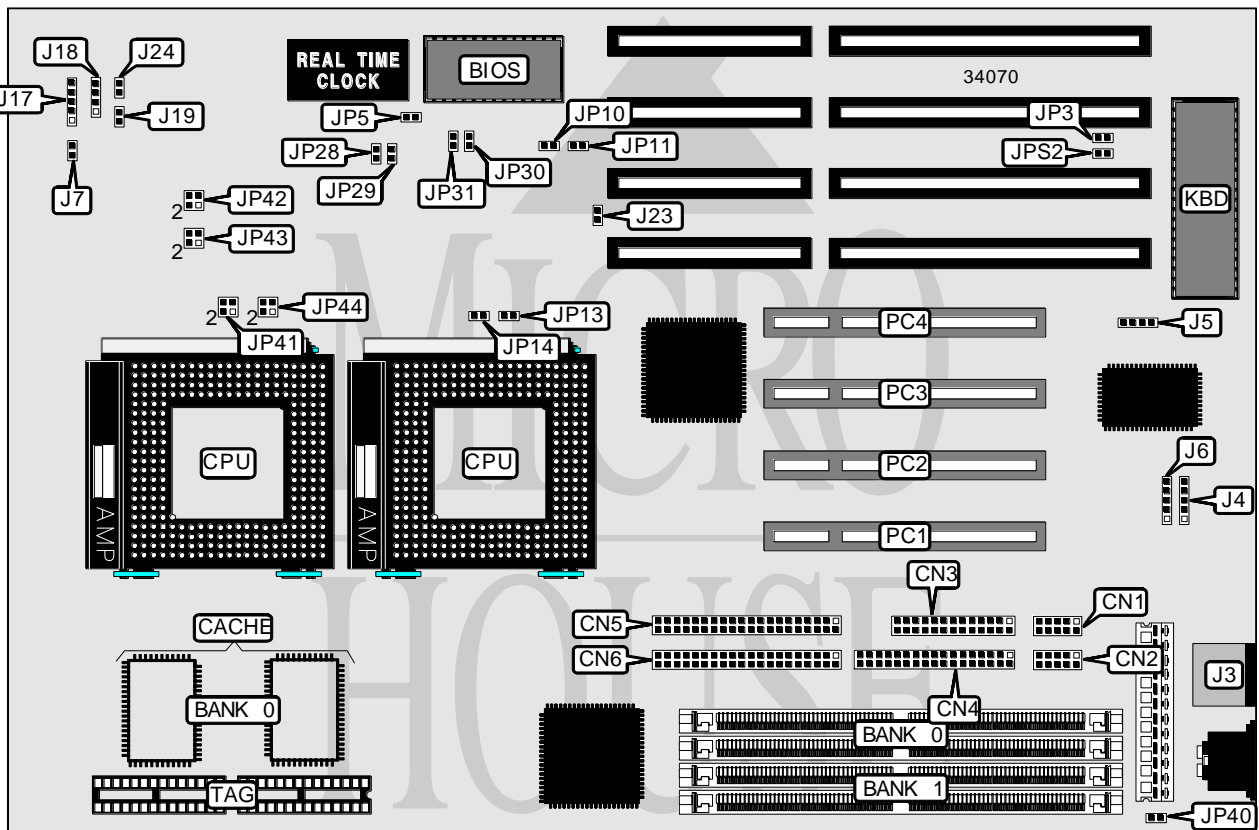
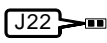


SOYO COMPUTER CO., LTD.

5TH0/H2/H5

Processor	Pentium
Processor Speed	75/90/100/120/133/150/166/180/200MHz
Chip Set	Intel
Video Chip Set	None
Maximum Onboard Memory	256MB (EDO supported)
Maximum Video Memory	None
Cache	256/512KB
BIOS	Award
Dimensions	330mm x 218mm
I/O Options	32-bit PCI slots (4), green PC connector, floppy drive interface, IDE interfaces (2), parallel port, PS/2 mouse port, serial ports (2), IR connector, USB connectors (2)
NPU Options	None




 LOCATION UNIDENTIFIED

Continued on next page. . .

SOYO COMPUTER CO., LTD.

5TH0/H2/H5

... continued from previous page

CONNECTIONS			
Purpose	Location	Purpose	Location
Serial port 2	CN1	USB connector	J6
Serial port 1	CN2	Turbo LED	J7
Parallel port	CN3	Power LED & keylock	J17
Floppy drive interface	CN4	Speaker	J18
IDE interface 2	CN5	Reset switch	J19
IDE interface 1	CN6	Turbo LED	J22
PS/2 mouse port	J3	Green PC connector	J23
USB connector	J4	IDE interface LED	J24
IR connector	J5	32-bit PCI slots	PC1 – PC4

USER CONFIGURABLE SETTINGS		
Function	Label	Position
í Monitor type select EGA/VGA	JP3	Closed
Monitor type select monochrome	JP3	Open
í CMOS memory normal operation	JP5	Open
CMOS memory clear	JP5	Closed
í Factory configured - do not alter	JP40	Closed
í PS/2 mouse enabled	JPS2	Closed
PS/2 mouse disabled	JPS2	Open

DRAM CONFIGURATION		
Size	Bank 0	Bank 1
4MB	(2) 512K x 36	None
8MB	(2) 512K x 36	(2) 512K x 36
8MB	(2) 1M x 36	None
12MB	(2) 1M x 36	(2) 512K x 36
16MB	(2) 2M x 36	None
16MB	(2) 1M x 36	(2) 1M x 36
20MB	(2) 2M x 36	(2) 512K x 36
24MB	(2) 2M x 36	(2) 1M x 36
32MB	(2) 4M x 36	None
32MB	(2) 2M x 36	(2) 2M x 36
36MB	(2) 4M x 36	(2) 512K x 36
40MB	(2) 4M x 36	(2) 1M x 36
48MB	(2) 4M x 36	(2) 2M x 36
64MB	(2) 8M x 36	None
64MB	(2) 4M x 36	(2) 4M x 36
68MB	(2) 8M x 36	(2) 512K x 36
72MB	(2) 8M x 36	(2) 1M x 36
80MB	(2) 8M x 36	(2) 2M x 36
96MB	(2) 8M x 36	(2) 4M x 36

Continued on next page. ...

SOYO COMPUTER CO., LTD.
5TH0/H2/H5

... continued from previous page

DRAM CONFIGURATION (CON'T)		
Size	Bank 0	Bank 1
128MB	(2) 8M x 36	(2) 8M x 36
128MB	(2) 16M x 36	None
132MB	(2) 16M x 36	(2) 512K x 36
136MB	(2) 16M x 36	(2) 1M x 36
144MB	(2) 16M x 36	(2) 2M x 36
160MB	(2) 16M x 36	(2) 4M x 36
192MB	(2) 16M x 36	(2) 8M x 36
256MB	(2) 16M x 36	(2) 16M x 36

Note: Board accepts EDO memory. Banks are interchangeable.

CACHE CONFIGURATION		
Size	Bank 0	TAG
256KB	(2) 32K x 32	(2) 16K x 8
512KB	(2) 64K x 32	(2) 16K x 8

CPU SPEED SELECTION						
CPU speed	Clock speed	Multiplier	JP10	JP11	JP13	JP14
75MHz	50MHz	1.5x	Closed	Closed	Open	Open
90MHz	60MHz	1.5x	Closed	Open	Open	Open
100MHz	66MHz	1.5x	Open	Closed	Open	Open
120MHz	60MHz	2x	Closed	Open	Closed	Closed
133MHz	66MHz	2x	Open	Closed	Closed	Open
150MHz	60MHz	2.5x	Closed	Open	Closed	Closed
166MHz	66MHz	2.5x	Open	Closed	Closed	Closed
180MHz	60MHz	3x	Closed	Open	Open	Closed
200MHz	66MHz	3x	Open	Closed	Open	Closed

CPU VOLTAGE SELECTION (SINGLE)				
Voltage	JP28	JP29	JP30	JP31
3.3v	Open	Closed	Closed	Open

CPU VOLTAGE SELECTION (SINGLE, CON'T)				
Voltage	JP41	JP42	JP43	JP44
3.3v	1 & 2, 3 & 4	Open	Open	1 & 2, 3 & 4

Note: Pins designated should be in the closed position.

CPU VOLTAGE SELECTION (DUAL)					
Voltage	V core	JP28	JP29	JP30	JP31
3.3v	2.8v	Closed	Open	Open	Closed

CPU VOLTAGE SELECTION (DUAL, CON'T)					
Voltage	V core	JP41	JP42	JP43	JP44
3.3v	2.8v	Open	1 & 2, 3 & 4	1 & 2, 3 & 4	Open

Note: Pins designated should be in the closed position.

