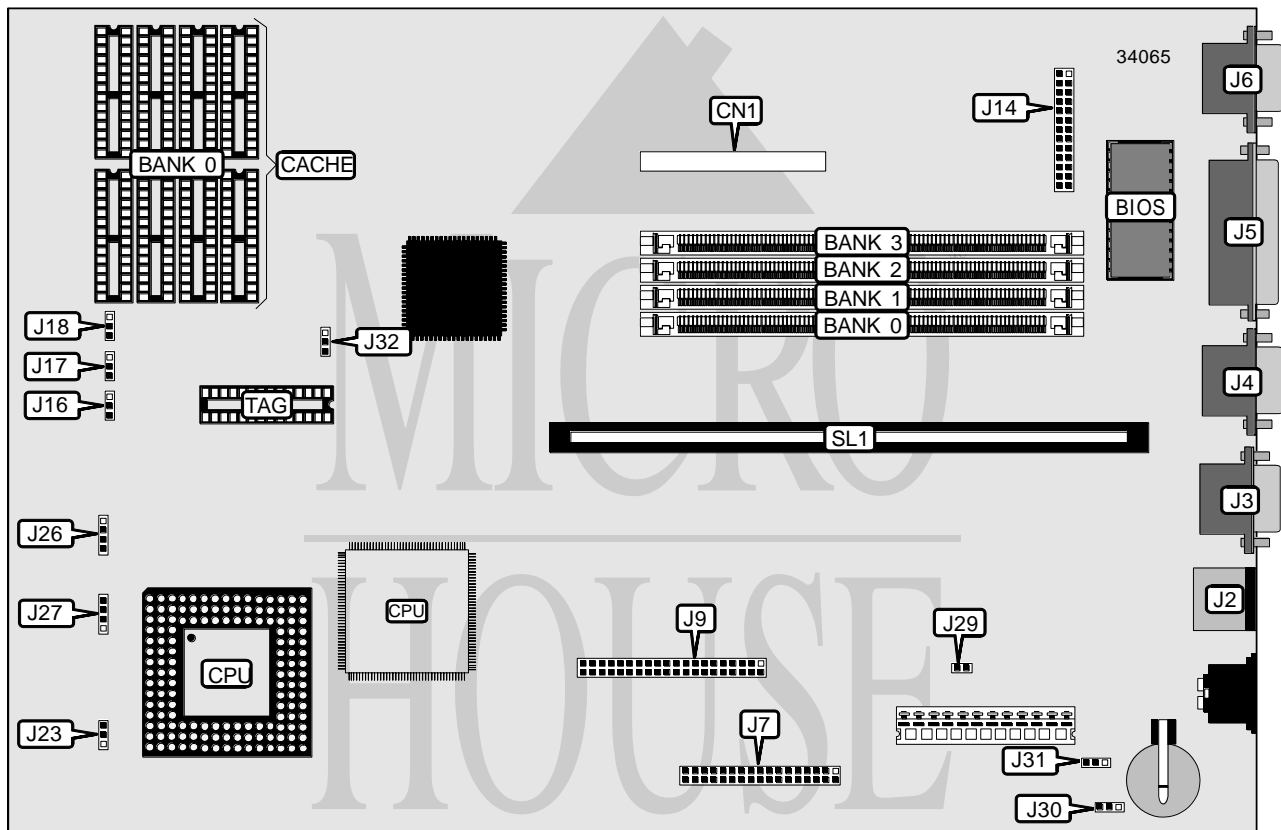


IBM CORPORATION

PS/1 MT2133A, MT2155A, MT2168A

Processor	80486SX/80487SX/80486DX/80486DX2/P23T/P24T
Processor Speed	25/33/50(internal)/66(internal)MHz
Chip Set	Unidentified
Video Chip Set	Unidentified
Maximum Onboard Memory	32MB
Maximum Video Memory	1MB
Cache	64/256KB
BIOS	Unidentified
Dimensions	330mm x 218mm
I/O Options	Floppy drive interface, IDE interface, parallel port, PS/2 mouse port, serial ports (2), VGA feature connector, VGA port, riser slot
NPU Options	None



CONNECTIONS

Purpose	Location	Purpose	Location
PS/2 mouse port	J2	VGA feature connector	J14
Serial port 1	J3	Power LED	J26 pins 1 & 2
Serial port 2	J4	IDE interface LED	J26 pins 3 & 4
Parallel port	J5	Speaker	J27
VGA port	J6	Power supply	J29
Floppy drive interface	J7	Power supply	J30
IDE interface	J9	Riser slot	SL1

IBM CORPORATION

PS/1 MT2133A, MT2155A, MT2168A

... continued from previous page

USER CONFIGURABLE SETTINGS		
Function	Label	Position
Password normal operation	J31	Pins 2 & 3 closed
Password clear	J31	Pins 1 & 2 closed

DRAM CONFIGURATION				
Size	Bank 0	Bank 1	Bank 2	Bank 3
2MB	(1) 512K x 36	None	None	None
4MB	(1) 1M x 36	None	None	None
4MB	(1) 512K x 36	(1) 512K x 36	None	None
6MB	(1) 512K x 36	(1) 512K x 36	(1) 512K x 36	None
8MB	(1) 2M x 36	None	None	None
8MB	(1) 1M x 36	(1) 1M x 36	None	None
8MB	(1) 512K x 36	(1) 512K x 36	(1) 512K x 36	(1) 512K x 36
16MB	(1) 4M x 36	None	None	None
16MB	(1) 2M x 36	(1) 2M x 36	None	None
24MB	(1) 2M x 36	(1) 2M x 36	(1) 2M x 36	None
32MB	(1) 4M x 36	(1) 4M x 36	None	None
32MB	(1) 2M x 36	(1) 2M x 36	(1) 2M x 36	(1) 2M x 36

Note: Banks are interchangeable.

CACHE CONFIGURATION		
Size	Bank 0	TAG
64KB	(8) 8K x 8	(1) 32K x 8
256KB	(8) 32K x 8	(1) 32K x 8

CACHE JUMPER CONFIGURATION				
Size	J16	J17	J18	J32
64KB	Pins 2 & 3 closed	Pins 2 & 3 closed	Pins 2 & 3 closed	Pins 2 & 3 closed
256KB	Pins 1 & 2 closed	Pins 1 & 2 closed	Pins 1 & 2 closed	Pins 1 & 2 closed

VIDEO MEMORY CONFIGURATION	
Size	CN1
512KB	512KB module installed
1MB	1MB module installed

Continued on next page...

IBM CORPORATION

MPS/1 MT2133A, MT2155A, MT2168A

... continued from previous page

CPU TYPE SELECTION	
Type	J23
80486SX	Pins 2 & 3 closed
80487SX	Pins 2 & 3 closed
80486DX	Pins 1 & 2 closed
80486DX2	Pins 1 & 2 closed
P23T	Pins 2 & 3 closed
P24T	Pins 1 & 2 closed