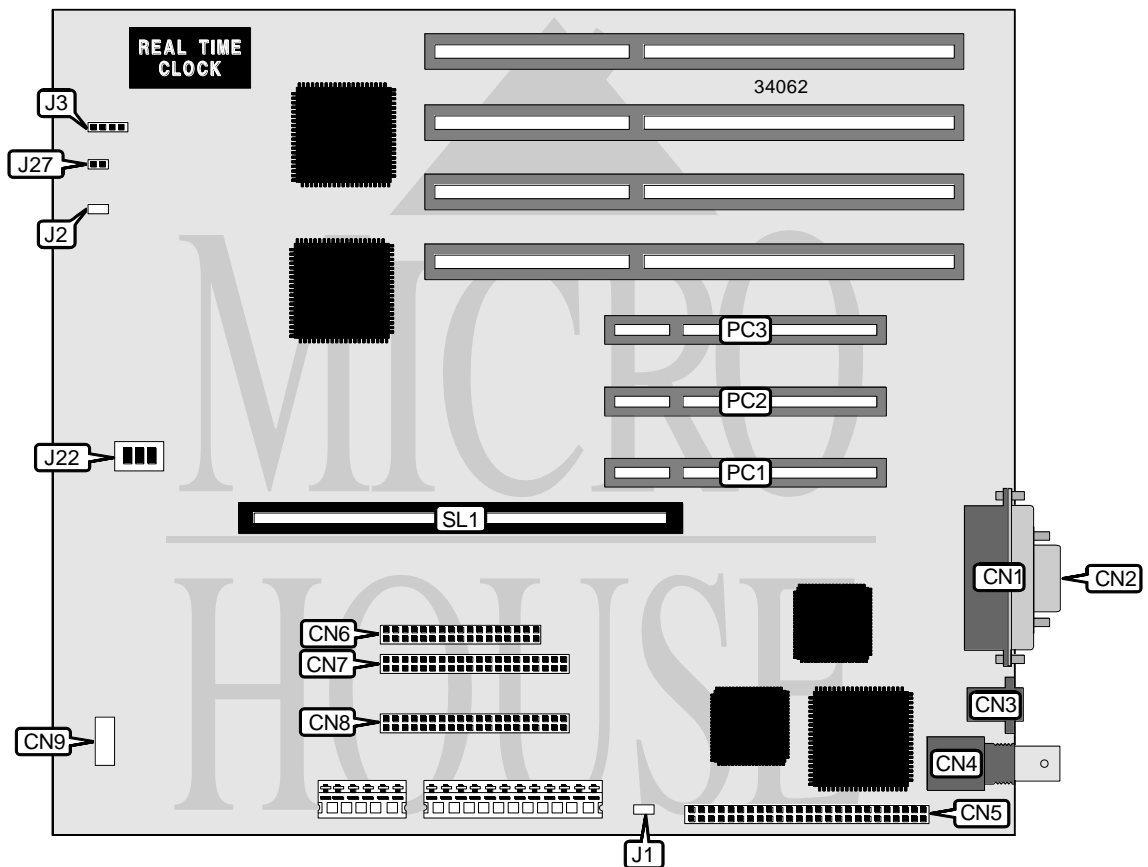


# DIGITAL EQUIPMENT CORPORATION PRIORIS LX

<b>Processor</b>	80486SX/80486DX/80486DX2/Pentium
<b>Processor Speed</b>	80486: 25/33MHz Pentium: 75/90/100/120/133/150/166/180/200MHz
<b>Chip Set</b>	Unidentified
<b>Video Chip Set</b>	None
<b>Maximum Onboard Memory</b>	80486: 128MB Pentium: 192MB
<b>Maximum Video Memory</b>	None
<b>Cache</b>	80486: Unidentified Pentium: 256/512KB
<b>BIOS</b>	Unidentified
<b>Dimensions</b>	254mm x 218mm
<b>I/O Options</b>	32-bit PCI slots (3), Ethernet 10Base2 connector, Ethernet 10BaseT connector, floppy drive interface, IDE interfaces (2), SCSI interface, parallel port, serial ports (2), VGA port, CPU slot
<b>NPU Options</b>	None



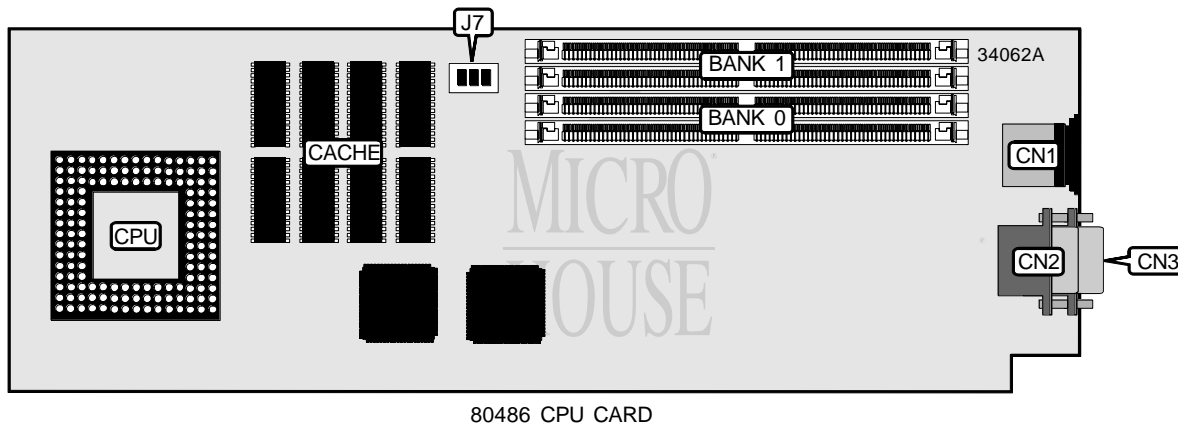
Continued on next page. . .

# DIGITAL EQUIPMENT CORPORATION PRIORIS LX

... continued from previous page

CONNECTIONS			
Purpose	Location	Purpose	Location
Parallel port	CN1	IDE interface 2	CN8
VGA port	CN2	Front panel connector	CN9
Ethernet 10BaseT connector	CN3	V dc power connector	J1
Ethernet 10Base2 connector	CN4	Chassis fan power	J2
SCSI interface	CN5	Speaker	J3
Floppy drive interface	CN6	32-bit PCI slots	PC1 – PC3
IDE interface 1	CN7	CPU slot	SL1

USER CONFIGURABLE SETTINGS		
Function	Label	Position
í Flash BIOS upgrade enabled	J22/1	Off
Flash BIOS upgrade disabled	J22/1	On
í Flash BIOS write protect disabled	J22/2	Off
Flash BIOS write protect enabled	J22/2	On
í Password normal operation	J22/3	Off
Password clear	J22/3	On
í DSM not installed	J27	Closed
DSM installed	J27	Open



CONNECTIONS			
Purpose	Location	Purpose	Location
PS/2 mouse port	CN1	Serial port	CN3
Serial port	CN2		

USER CONFIGURABLE SETTINGS		
Function	Label	Position
í Factory configured – do not alter	J7/2	On
í Factory configured – do not alter	J7/3	On

Continued on next page. ...

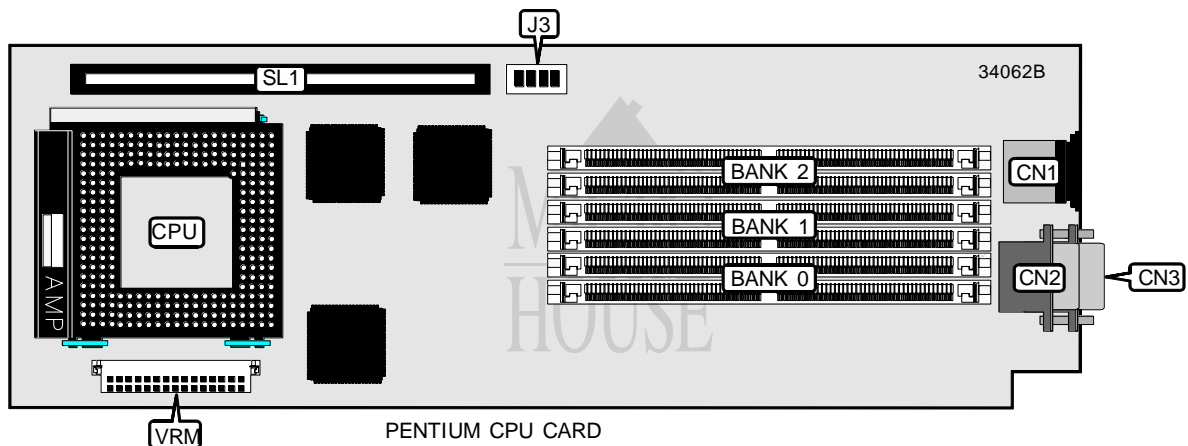
# DIGITAL EQUIPMENT CORPORATION PRIORIS LX

... continued from previous page

DRAM CONFIGURATION				
Size	Bank 0	Bank 1	Bank 2	Bank 3
16MB	(1) 2M x 36	(1) 2M x 36	None	None
24MB	(1) 2M x 36	(1) 2M x 36	(1) 1M x 36	(1) 1M x 36
32MB	(1) 2M x 36	(1) 2M x 36	(1) 2M x 36	(1) 2M x 36
32MB	(1) 4M x 36	(1) 4M x 36	None	None
40MB	(1) 4M x 36	(1) 4M x 36	(1) 1M x 36	(1) 1M x 36
48MB	(1) 4M x 36	(1) 4M x 36	(1) 2M x 36	(1) 2M x 36
64MB	(1) 4M x 36	(1) 4M x 36	(1) 4M x 36	(1) 4M x 36
64MB	(1) 8M x 36	(1) 8M x 36	None	None
72MB	(1) 8M x 36	(1) 8M x 36	(1) 1M x 36	(1) 1M x 36
80MB	(1) 8M x 36	(1) 8M x 36	(1) 2M x 36	(1) 2M x 36
96MB	(1) 8M x 36	(1) 8M x 36	(1) 4M x 36	(1) 4M x 36
128MB	(1) 8M x 36	(1) 8M x 36	(1) 8M x 36	(1) 8M x 36

CACHE CONFIGURATION
Note: The size of the cache is unidentified.

CPU SPEED SELECTION	
CPU speed	J7/1
25MHz	On
33MHz	Off
50iMHz	On
66iMHz	Off



Continued on next page...

# DIGITAL EQUIPMENT CORPORATION PRIORIS LX

... continued from previous page

CONNECTIONS			
Purpose	Location	Purpose	Location
PS/2 mouse port	CN1	Serial port	CN3
Serial port	CN2	VRM connector	VRM

DRAM CONFIGURATION			
Size	Bank 0	Bank 1	Bank 2
16MB	(2) 2M x 36	None	None
24MB	(2) 2M x 36	(2) 1M x 36	None
32MB	(2) 2M x 36	(2) 1M x 36	(2) 1M x 36
32MB	(2) 2M x 36	(2) 2M x 36	None
32MB	(2) 4M x 36	None	None
40MB	(2) 2M x 36	(2) 2M x 36	(2) 1M x 36
40MB	(2) 4M x 36	(2) 1M x 36	None
48MB	(2) 2M x 36	(2) 2M x 36	(2) 2M x 36
48MB	(2) 2M x 36	(2) 4M x 36	None
48MB	(2) 4M x 36	(2) 1M x 36	(2) 1M x 36
56MB	(2) 4M x 36	(2) 2M x 36	(2) 1M x 36
64MB	(2) 4M x 36	(2) 4M x 36	None
64MB	(2) 8M x 36	None	None
72MB	(2) 8M x 36	(2) 1M x 36	None
72MB	(2) 4M x 36	(2) 4M x 36	(2) 1M x 36
80MB	(2) 2M x 36	(2) 4M x 36	(2) 4M x 36
80MB	(2) 2M x 36	(2) 8M x 36	None
88MB	(2) 8M x 36	(2) 2M x 36	(2) 1M x 36
96MB	(2) 8M x 36	(2) 2M x 36	(2) 2M x 36
96MB	(2) 4M x 36	(2) 4M x 36	(2) 4M x 36
96MB	(2) 8M x 36	(2) 4M x 36	None
112MB	(2) 8M x 36	(2) 4M x 36	(2) 2M x 36
128MB	(2) 8M x 36	(2) 8M x 36	None
128MB	(2) 8M x 36	(2) 4M x 36	(2) 4M x 36
136MB	(2) 8M x 36	(2) 8M x 36	(2) 1M x 36
144MB	(2) 8M x 36	(2) 8M x 36	(2) 2M x 36
160MB	(2) 8M x 36	(2) 8M x 36	(2) 4M x 36
192MB	(2) 8M x 36	(2) 8M x 36	(2) 8M x 36

CACHE CONFIGURATION	
Size	SL1
256KB	256KB module installed
512KB	512KB module installed

Continued on next page. ...

# DIGITAL EQUIPMENT CORPORATION

## PRIORIS LX

... continued from previous page

CPU SPEED SELECTION						
CPU speed	Clock speed	Multiplier	J3/1	J3/2	J3/3	J3/4
75MHz	50MHz	1.5x	Off	Off	Off	Off
90MHz	60MHz	1.5x	Off	Off	On	On
100MHz	66MHz	1.5x	Off	Off	On	Off
120MHz	60MHz	2x	On	Off	On	On
133MHz	66MHz	2x	On	Off	On	Off
150MHz	60MHz	2.5x	On	On	On	On
166MHz	66MHz	2.5x	On	On	On	Off
180MHz	60MHz	3x	Off	On	On	On
200MHz	66MHz	3x	Off	On	On	Off