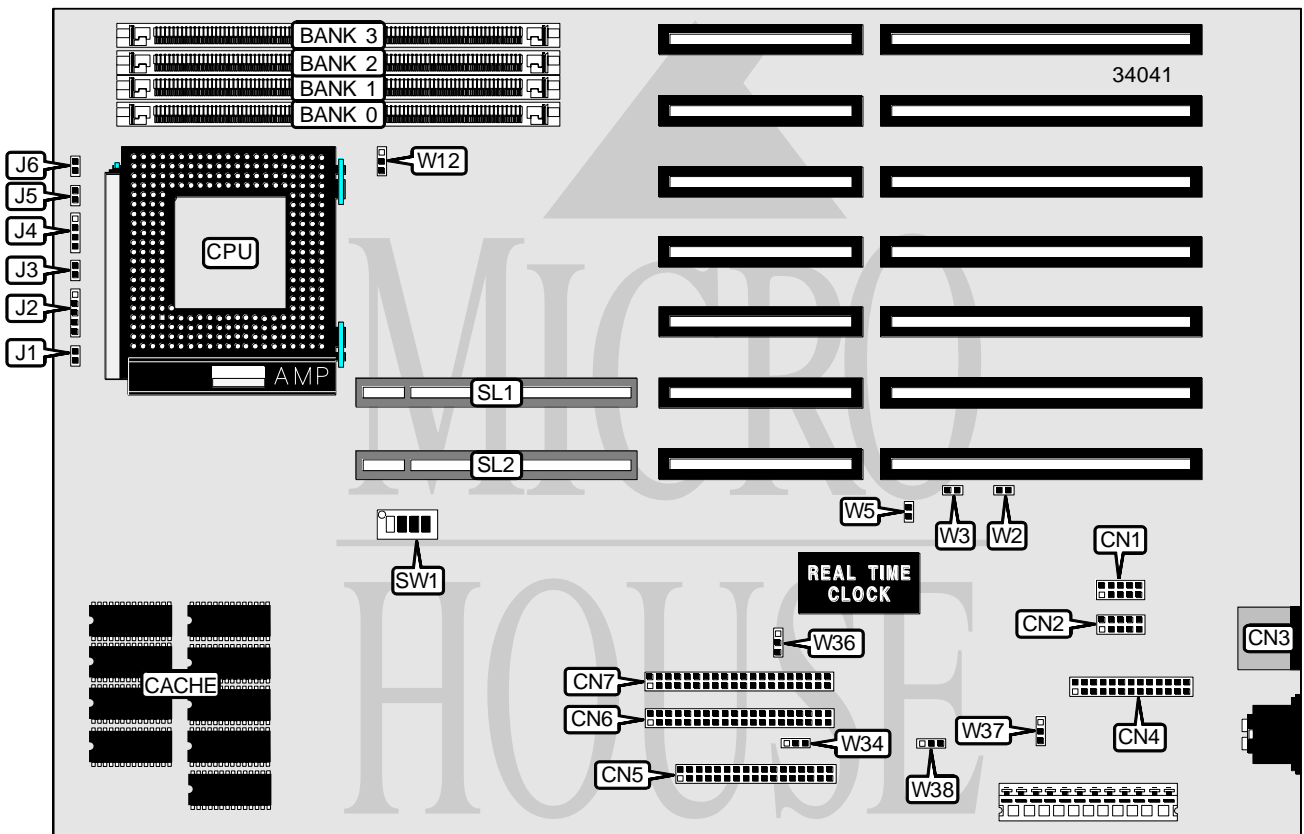


DELL COMPUTER CORPORATION DIMENSION XPS XXXV

Processor	80486DX2/80486DX4
Processor Speed	66(internal)/100(internal)MHz
Chip Set	Micronics
Max. Onboard DRAM	64MB
Cache	256KB
BIOS	Unidentified
Dimensions	330mm x 218mm
I/O Options	32-bit VESA local bus slots (2), floppy drive interface, IDE interface, parallel port, PS/2 mouse port, serial ports (2)
NPU Options	None



CONNECTIONS			
Purpose	Location	Purpose	Location
Serial port 1	CN1	IDE interface LED	J1
Serial port 2	CN2	Power LED & keylock	J2
PS/2 mouse port	CN3	Reset switch	J3
Parallel port	CN4	Speaker	J4
Floppy drive interface	CN5	Turbo switch	J5
IDE interface 1	CN6	Turbo LED	J6
IDE interface 2	CN7	32-bit VESA Local bus slots	SL1 & SL2

Continued next page...

DELL COMPUTER CORPORATION
 DIMENSION XPS XXXV

... continued from previous page.

USER CONFIGURABLE SETTINGS		
Function	Jumper	Position
í Factory configured - do not alter	W1	Closed
í Monitor type select color	W2	Closed
Monitor type select monochrome	W2	Open
í Mouse IRQ12 enabled	W3	Closed
Mouse IRQ12 disabled	W3	Open
í Factory configured - do not alter	W4	Open
í CMOS memory clear	W5	Closed
CMOS memory normal operation	W5	Open
í Factory configured - do not alter	W8	pins 2 & 3 closed
í Factory configured - do not alter	W10	pins 2 & 3 closed
í Factory configured - do not alter	W11	pins 2 & 3 closed
í CPU type select - Intel DX/DX2/DX4/Pentium Overdrive	W12	pins 1 & 2 closed
í Factory configured - do not alter	W13	Open
í Factory configured - do not alter	W16	pins 2 & 3 closed
í Factory configured - do not alter	W17	pins 2 & 3 closed
í Factory configured - do not alter	W18	Open
í Factory configured - do not alter	W19	pins 2 & 3 closed
í Factory configured - do not alter	W22	pins 2 & 3 closed
í Factory configured - do not alter	W23	pins 2 & 3 closed
í Factory configured - do not alter	W24	pins 2 & 3 closed
í Factory configured - do not alter	W25	Open
í IDE port 1 enabled	W34	pins 1 & 2 closed
IDE port 1 disabled	W34	pins 2 & 3 closed
Factory configured - do not alter	W35	Open
í Parallel port type select IRQ7	W36	pins 1 & 2 closed
Parallel port type select IRQ5	W36	pins 2 & 3 closed
í Factory configured - do not alter	W39	Open
í Factory configured - do not alter	W40	Open
í Factory configured - do not alter	SW1/1	On
í Factory configured - do not alter	SW1/2	On
í Factory configured - do not alter	SW1/3	Off
í Factory configured - do not alter	SW1/4	Off

Note: The location of the factory configured jumpers is unidentified.

Continued next page...

DELL COMPUTER CORPORATION
 DIMENSION XPS XXXV

... continued from previous page.

DRAM CONFIGURATION				
Size	Bank 0	Bank 1	Bank 2	Bank 3
4MB	(1) 1M x 36	NONE	NONE	NONE
8MB	(1) 1M x 36	(1) 1M x 36	NONE	NONE
12MB	(1) 1M x 36	(1) 1M x 36	(1) 1M x 36	NONE
16MB	(1) 1M x 36	(1) 1M x 36	(1) 1M x 36	(1) 1M x 36
16MB	(1) 4M x 36	NONE	NONE	NONE
20MB	(1) 1M x 36	(1) 4M x 36	NONE	NONE
24MB	(1) 1M x 36	(1) 1M x 36	(1) 4M x 36	NONE
32MB	(1) 4M x 36	(1) 4M x 36	NONE	NONE
36MB	(1) 1M x 36	(1) 4M x 36	(1) 4M x 36	NONE
40MB	(1) 1M x 36	(1) 1M x 36	(1) 4M x 36	(1) 4M x 36
48MB	(1) 4M x 36	(1) 4M x 36	(1) 4M x 36	NONE
64MB	(1) 4M x 36	(1) 4M x 36	(1) 4M x 36	(1) 4M x 36

DMA CHANNEL CONFIGURATION		
DMA Channel	W37	W38
1	pins 1 & 2 closed	pins 1 & 2 closed
3	pins 2 & 3 closed	pins 2 & 3 closed