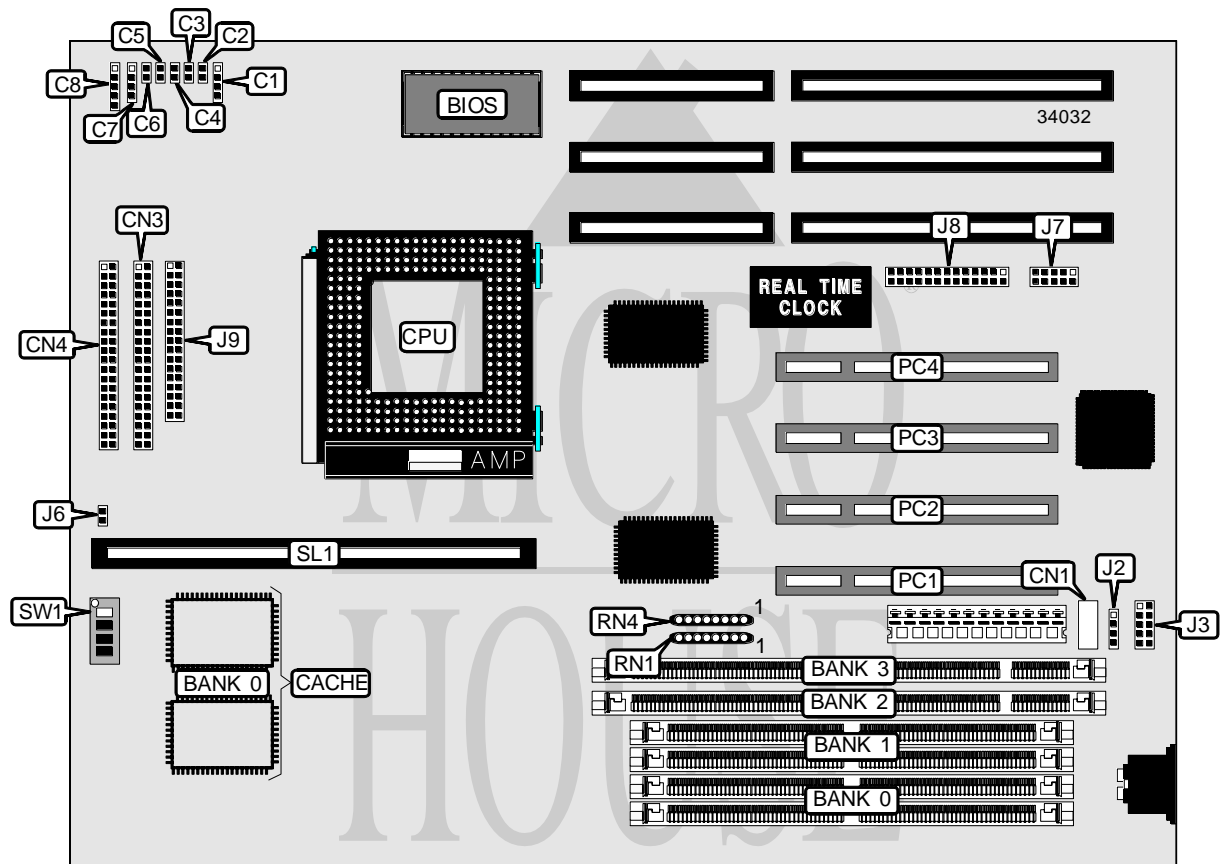


# GIGA-BYTE TECHNOLOGY CO., LTD.

## GA-586VX (REV. 1.1)

<b>Processor</b>	CX M1/AM K5/Pentium
<b>Processor Speed</b>	75/90/100/120/120/133/150/166/180/200MHz
<b>Chip Set</b>	Intel
<b>Video Chip Set</b>	None
<b>Maximum Onboard Memory</b>	128MB (EDO supported)
<b>Maximum Video Memory</b>	None
<b>Cache</b>	256/512KB
<b>BIOS</b>	Award
<b>Dimensions</b>	280mm x 220mm
<b>I/O Options</b>	32-bit PCI slots (4), floppy drive interface, green PC connector, IDE interfaces (2), parallel port, PS/2 mouse interface, serial ports (2), cache slot, USB connector
<b>NPU Options</b>	None



Continued on next page . . .

GIGA-BYTE TECHNOLOGY CO., LTD.  
GA-586VX (REV. 1.1)

... continued from previous page

CONNECTIONS			
Purpose	Location	Purpose	Location
IDE interface LED	C1	IDE interface 1	CN4
Green PC connector	C2	PS/2 mouse interface	J2
Green PC LED	C3	Serial port 2	J3
Reset switch	C4	Chassis fan power	J6
Turbo switch	C5	Serial port 1	J7
Turbo LED	C6	Parallel port	J8
Speaker	C7	Floppy drive interface	J9
Power LED & keylock	C8	32-bit PCI slots	PC1 – PC4
USB connector	CN1	Cache slot	SL1
IDE interface 2	CN3		

DRAM CONFIGURATION		
Size	Bank 0	Bank 1
8MB	(2) 1M x 36	None
16MB	(2) 2M x 36	None
16MB	(2) 1M x 36	(2) 1M x 36
24MB	(2) 2M x 36	(2) 1M x 36
32MB	(2) 4M x 36	None
32MB	(2) 2M x 36	(2) 2M x 36
40MB	(2) 4M x 36	(2) 1M x 36
48MB	(2) 4M x 36	(2) 2M x 36
64MB	(2) 8M x 36	None
64MB	(2) 4M x 36	(2) 4M x 36
72MB	(2) 8M x 36	(2) 1M x 36
80MB	(2) 8M x 36	(2) 2M x 36
96MB	(2) 8M x 36	(2) 4M x 36
128MB	(2) 8M x 36	(2) 8M x 36

Note: Board accepts EDO memory.

DIMM CONFIGURATION		
Size	Bank 2	Bank 3
8MB	(1) 1M x 64	None
16MB	(1) 2M x 64	None
16MB	(1) 1M x 64	(1) 1M x 64
24MB	(1) 2M x 64	(1) 1M x 64
32MB	(1) 4M x 64	None
32MB	(1) 2M x 64	(1) 2M x 64
40MB	(1) 4M x 64	(1) 1M x 64

Continued on next page. . .

GIGA-BYTE TECHNOLOGY CO., LTD.  
GA-586VX (REV. 1.1)

... continued from previous page

DIMM CONFIGURATION (CON'T)		
Size	Bank 0	Bank 1
48MB	(1) 4M x 64	(1) 2M x 64
64MB	(1) 8M x 64	None
64MB	(1) 4M x 64	(1) 4M x 64
72MB	(1) 8M x 64	(1) 1M x 64
80MB	(1) 8M x 64	(1) 2M x 64
96MB	(1) 8M x 64	(1) 4M x 64
128MB	(1) 8M x 64	(1) 8M x 64

Note: Do not install SIMMs and DIMMs at the same time.

DRAM RESISTOR CONFIGURATION		
Type	RN1	RN4
SIMMs installed	Not installed	Installed
DIMMs installed	Installed	Not installed

CACHE CONFIGURATION		
Size	Bank 0	SL1
256KB	(2) 32K x 32	Not installed
512KB	(2) 32K x 32	256KB module installed

CPU SPEED SELECTION (CYRIX)						
CPU speed	Clock speed	Multiplier	SW1/1	SW1/2	SW1/3	SW1/4
120MHz	50MHz	2x	On	Off	On	On
133MHz	55MHz	2x	On	Off	On	Off
150MHz	60MHz	2x	On	Off	Off	On
166MHz	66MHz	2x	On	Off	Off	Off

CPU SPEED SELECTION (AMD)						
CPU speed	Clock speed	Multiplier	SW1/1	SW1/2	SW1/3	SW1/4
75MHz	50MHz	1.5x	Off	Off	On	On
90MHz	60MHz	1.5x	Off	Off	Off	On
100MHz	66MHz	1.5x	Off	Off	Off	Off
120MHz	60MHz	1.5x	Off	Off	Off	On
133MHz	66MHz	2x	Off	Off	Off	Off
150MHz	60MHz	2.5x	On	Off	Off	On
166MHz	66MHz	2.5x	On	Off	Off	Off

Continued on next page...

GIGA-BYTE TECHNOLOGY CO., LTD.  
GA-586VX (REV. 1.1)

... continued from previous page

CPU SPEED SELECTION (INTEL)						
CPU speed	Clock speed	Multiplier	SW1/1	SW1/2	SW1/3	SW1/4
75MHz	50MHz	1.5x	Off	Off	On	On
90MHz	60MHz	1.5x	Off	Off	Off	On
100MHz	66MHz	1.5x	Off	Off	Off	Off
120MHz	60MHz	2x	On	Off	Off	On
125MHz	50MHz	2.5x	On	On	On	On
133MHz	66MHz	2x	On	Off	Off	Off
150MHz	60MHz	2.5x	On	On	Off	On
166MHz	66MHz	2.5x	On	On	Off	Off
180MHz	60MHz	3x	Off	On	Off	On
200MHz	66MHz	3x	Off	On	Off	Off