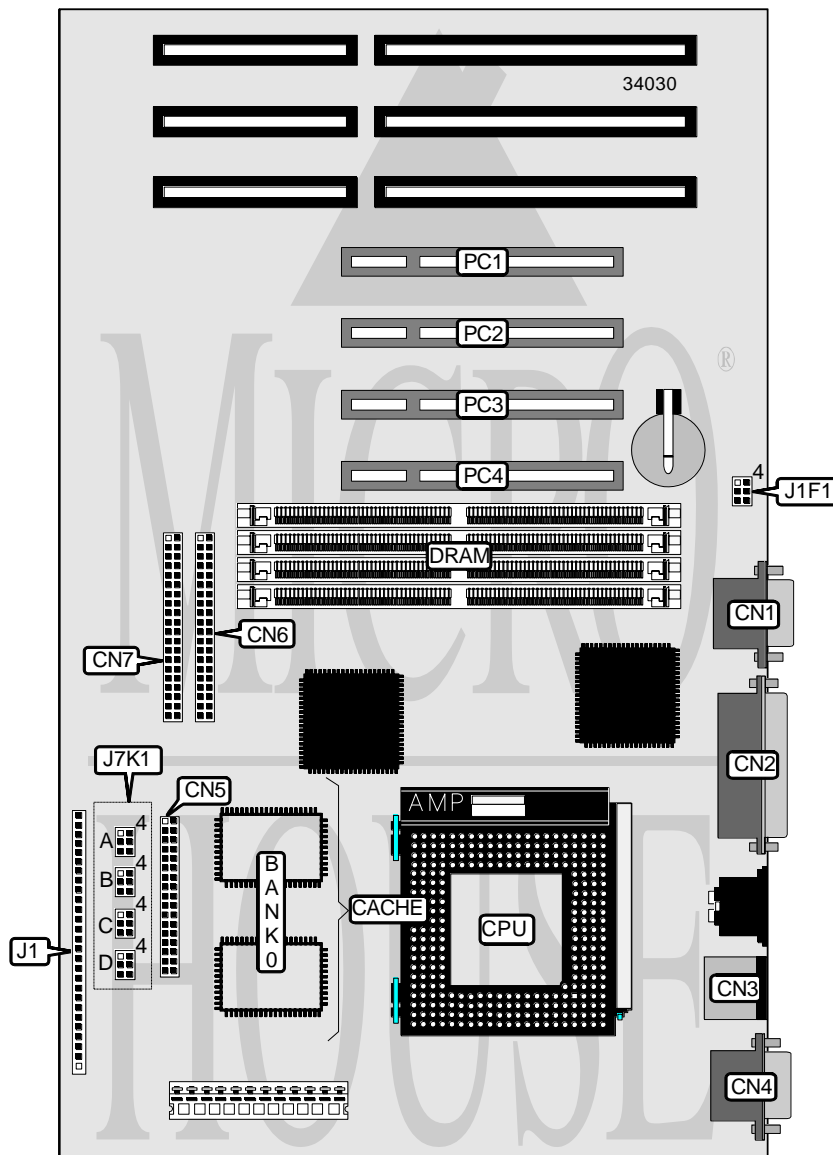


BCM ADVANCED RESEARCH, INC.

SQ598

Processor	Pentium
Processor Speed	75/90/100/120/133/150/166MHz
Chip Set	Intel
Video Chip Set	None
Maximum Onboard Memory	128MB (EDO supported)
Maximum Video Memory	None
Cache	256/512KB
BIOS	Phoenix
Dimensions	304mm x 178mm
I/O Options	32-bit PCI slots (4), floppy drive interface, green PC connector, IDE interfaces (2), parallel port, PS/2 mouse port, serial ports (2), IR connector
NPU Options	None



Continued on next page...

BCM ADVANCED RESEARCH, INC.
SQ598

... continued from previous page

CONNECTIONS			
Purpose	Location	Purpose	Location
Serial port 1	CN1	Reset switch	J1 pins 4 & 5
Parallel port	CN2	Power LED & keylock	J1 pins 6 - 10
PS/2 mouse port	CN3	IDE interface LED	J1 pins 11 - 14
Serial port 2	CN4	Green PC connector	J1 pins 15 - 19
Floppy drive interface	CN5	IR connector	J1 pins 20 - 25
IDE interface 1	CN6	Speaker	J1 pins 26 - 29
IDE interface 2	CN7	32-bit PCI slots	PC1 - PC4
Chassis fan power	J1 pins 1 - 3		

USER CONFIGURABLE SETTINGS		
Function	Label	Position
í Flash BIOS normal operation	J1F1	Pins 1 & 2 closed
Flash BIOS recovery mode	J1F1	Pins 2 & 3 closed
í Flash BIOS write protect enabled	J1F1	Pins 4 & 5 closed
Flash BIOS write protect disabled	J1F1	Pins 5 & 6 closed
í Password normal operation	J7K1A	Pins 1 & 2 closed
Password clear	J7K1A	Pins 2 & 3 closed
í CMOS memory normal operation	J7K1A	Pins 4 & 5 closed
CMOS memory clear	J7K1A	Pins 5 & 6 closed
í Setup access enabled	J7K1B	Pins 1 & 2 closed
Setup access disabled	J7K1B	Pins 2 & 3 closed

DRAM CONFIGURATION		
Size	Bank 0	Bank 1
8MB	(2) 1M x 36	None
16MB	(2) 2M x 36	None
16MB	(2) 1M x 36	(2) 1M x 36
24MB	(2) 2M x 36	(2) 1M x 36
32MB	(2) 4M x 36	None
32MB	(2) 2M x 36	(2) 2M x 36
40MB	(2) 4M x 36	(2) 1M x 36
48MB	(2) 4M x 36	(2) 2M x 36
64MB	(2) 8M x 36	None
64MB	(2) 4M x 36	(2) 4M x 36
72MB	(2) 8M x 36	(2) 1M x 36
80MB	(2) 8M x 36	(2) 2M x 36
96MB	(2) 8M x 36	(2) 4M x 36
128MB	(2) 8M x 36	(2) 8M x 36
128MB	(2) 16M x 36	None

Note: Board accepts EDO memory. Board also accepts x 32 SIMMs. The location of banks 0 & 1 are unidentified.

Continued on next page...

... continued from previous page

CACHE CONFIGURATION	
Size	Bank 0
256KB	(2) 32K x 32
512KB	(2) 64K x 32

Note: Board comes from the factory with 256KB or 512KB cache installed.

CPU SPEED SELECTION				
CPU speed	Clock speed	Multiplier	J7K1C	J7K1D
75MHz	50MHz	1.5x	2 & 3, 5 & 6	1 & 2, 4 & 5
90MHz	60MHz	1.5x	2 & 3, 4 & 5	1 & 2, 4 & 5
100MHz	66MHz	1.5x	1 & 2, 5 & 6	1 & 2, 4 & 5
120MHz	60MHz	2x	2 & 3, 4 & 5	2 & 3, 4 & 5
133MHz	66MHz	2x	1 & 2, 5 & 6	2 & 3, 4 & 5
150MHz	60MHz	2.5x	2 & 3, 4 & 5	2 & 3, 5 & 6
166MHz	66MHz	2.5x	1 & 2, 5 & 6	2 & 3, 5 & 6

Note: Pins designated should be in the closed position.

CPU TYPE SELECTION	
Type	J7K1B
OVD	Pins 5 & 6 closed
í VRE	Pins 4 & 5 closed