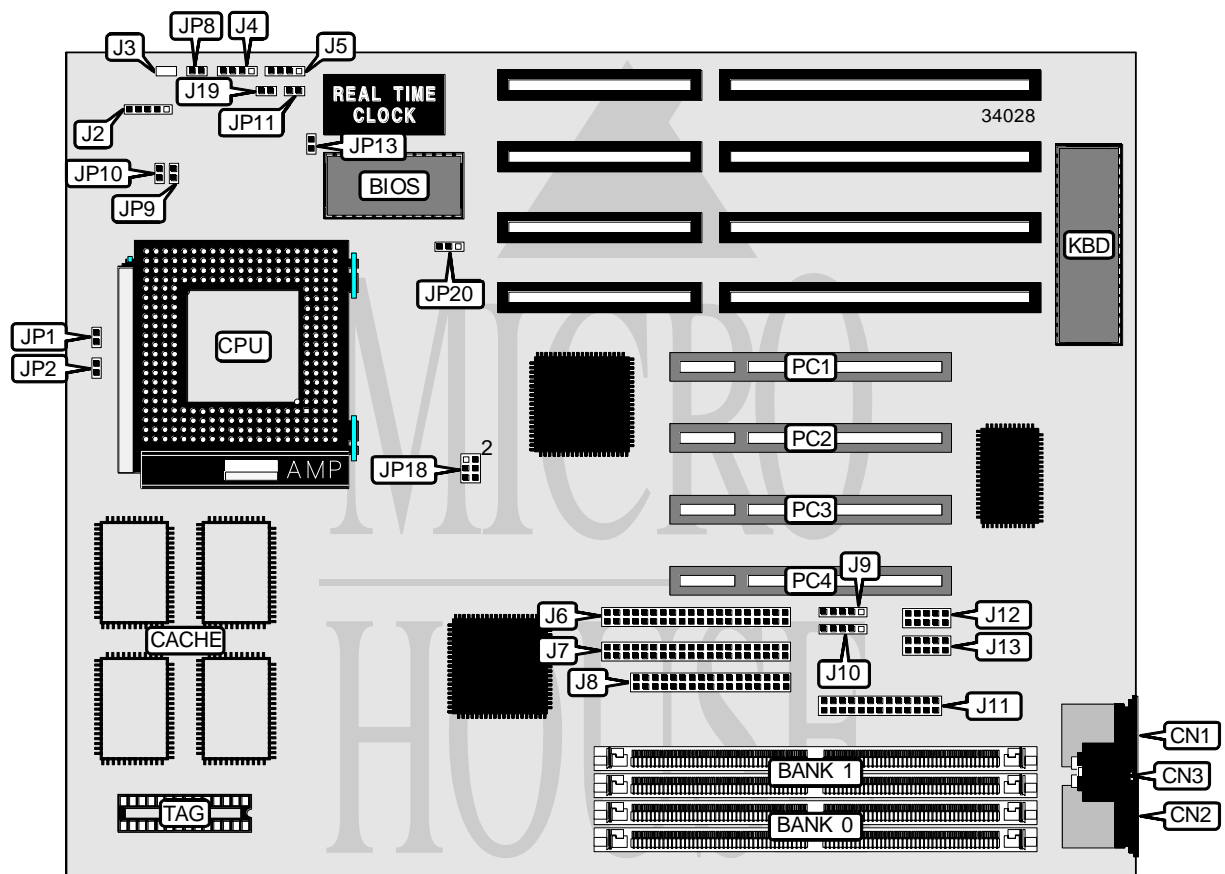


GEMLIGHT COMPUTER, LTD

GMB-P55IPS (VER. 1.10)

Processor	CX M1/AM K5/Pentium
Processor Speed	75/83/90/100/110/120/133/150/166/180/200MHz
Chip Set	Intel/Winbond
Video Chip Set	None
Maximum Onboard Memory	128MB (EDO supported)
Maximum Video Memory	None
Cache	512KB
BIOS	Award/AMI
Dimensions	265mm x 220mm
I/O Options	32-bit PCI slots (4), floppy drive interface, green PC connector, IDE interfaces (2), parallel port, PS/2 mouse interface, serial ports (2), IR connector, USB connectors (2), PS/2 mouse connector, PS/2 keyboard, keyboard connector
NPU Options	None



Continued on next page. . .

GEMLIGHT COMPUTER, LTD
GMB-P55IPS (VER. 1.10)

... continued from previous page

CONNECTIONS			
Purpose	Location	Purpose	Location
PS/2 mouse connector	CN1	USB connector 1	J9
PS/2 keyboard	CN2	USB connector 2	J10
Keyboard connector	CN3	Parallel port	J11
Power LED & keylock	J2	Serial port 2	J12
Speaker	J4	Serial port 1	J13
IDE interface LED	J5	Turbo LED	J19
IDE interface 1	J6	Green PC connector	JP8
IDE interface 2	J7	Reset switch	JP11
Floppy drive interface	J8	32-bit PCI slots	PC1 - PC4

USER CONFIGURABLE SETTINGS		
Function	Label	Position
í Factory configured - do not alter	J3	Unidentified
í CMOS memory normal operation	JP13	Open
CMOS memory clear	JP13	Closed
Flash BIOS voltage select 12v	JP20	Pins 1 & 2 closed
Flash BIOS voltage select 5v	JP20	Pins 2 & 3 closed

DRAM CONFIGURATION		
Size	Bank 0	Bank 1
2MB	(2) 256K x 36	None
4MB	(2) 256K x 36	(2) 256K x 36
8MB	(2) 1M x 36	None
10MB	(2) 1M x 36	(2) 256K x 36
16MB	(2) 1M x 36	(2) 1M x 36
16MB	(2) 2M x 36	None
18MB	(2) 2M x 36	(2) 256K x 36
24MB	(2) 2M x 36	(2) 1M x 36
32MB	(2) 2M x 36	(2) 2M x 36
32MB	(2) 4M x 36	None
34MB	(2) 4M x 36	(2) 256K x 36
40MB	(2) 4M x 36	(2) 1M x 36
48MB	(2) 4M x 36	(2) 2M x 36
64MB	(2) 4M x 36	(2) 4M x 36
64MB	(2) 8M x 36	None
66MB	(2) 8M x 36	(2) 256K x 36
72MB	(2) 8M x 36	(2) 1M x 36
80MB	(2) 8M x 36	(2) 2M x 36
96MB	(2) 8M x 36	(2) 4M x 36
128MB	(2) 8M x 36	(2) 8M x 36

Note: Board accepts EDO memory. Board also accepts x 32 SIMMs. Banks are interchangeable.

Continued on next page. . .

GEMLIGHT COMPUTER, LTD.
GMB-P55IPS (VER. 1.10)

... continued from previous page

CACHE CONFIGURATION			
Size	Bank 0	Bank 1	TAG
512KB	(2) 32K x 32	(2) 32K x 32	(1) 16K/32K x 8

Note: The location of banks 0 & 1 are unidentified.

CPU SPEED SELECTION (CYRIX)					
CPU speed	Clock speed	Multiplier	JP1	JP2	JP18
100MHz	50MHz	2x	Closed	Open	1 & 2, 3 & 4
110MHz	55MHz	2x	Closed	Open	Open
120MHz	60MHz	2x	Closed	Open	3 & 4
133MHz	66MHz	2x	Closed	Open	1 & 2

Note: Pins designated should be in the closed position.

CPU SPEED SELECTION (AMD)					
CPU speed	Clock speed	Multiplier	JP1	JP2	JP18
75MHz	50MHz	1.5x	Open	Open	1 & 2, 3 & 4
83MHz	55MHz	1.5x	Open	Open	Open
90MHz	60MHz	1.5x	Open	Open	3 & 4
100MHz	66MHz	1.5x	Open	Open	1 & 2
120MHz	60MHz	2x	Closed	Open	3 & 4
133MHz	66MHz	2x	Closed	Open	1 & 2

Note: Pins designated should be in the closed position.

CPU SPEED SELECTION (INTEL)					
CPU speed	Clock speed	Multiplier	JP1	JP2	JP18
75MHz	50MHz	1.5x	Open	Open	1 & 2, 3 & 4
90MHz	60MHz	1.5x	Open	Open	3 & 4
100MHz	66MHz	1.5x	Open	Open	1 & 2
120MHz	60MHz	2x	Closed	Open	3 & 4
133MHz	66MHz	2x	Closed	Open	1 & 2
150MHz	60MHz	2.5x	Closed	Closed	3 & 4
166MHz	66MHz	2.5x	Closed	Closed	1 & 2
180MHz	60MHz	3x	Open	Closed	3 & 4
200MHz	66MHz	3x	Open	Closed	1 & 2

Note: Pins designated should be in the closed position.

CPU VOLTAGE SELECTION		
Voltage	JP9	JP10
3.4v	Open	Closed
3.5v	Closed	Open