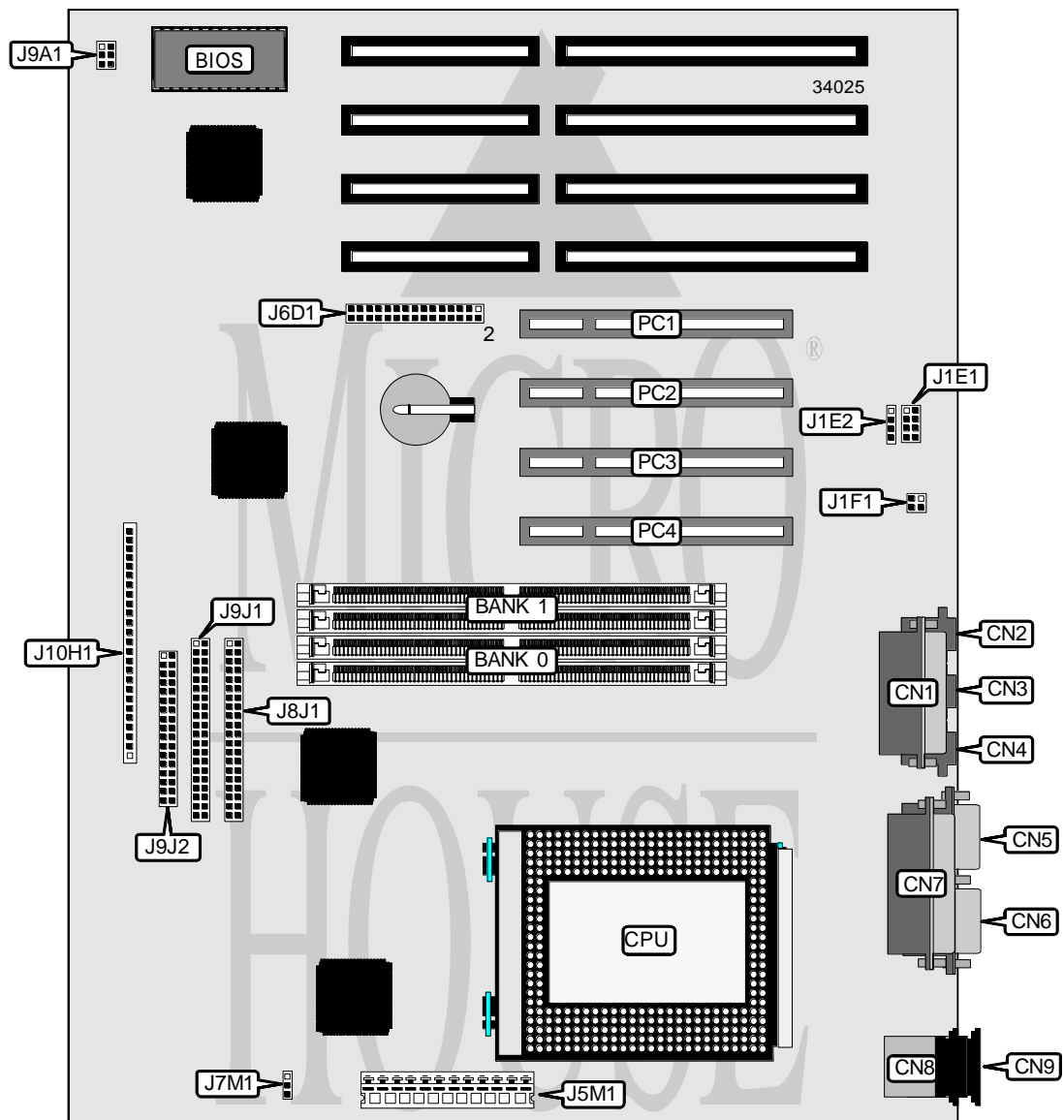


MAGITRONICS

A - P X 6 8 0 - 2 0 0 C

Processor	Pentium Pro
Processor Speed	150/166/180/200MHz
Chip Set	Intel
Video Chip Set	None
Maximum Onboard Memory	256MB (EDO supported)
Maximum Video Memory	None
Cache	256/512KB (located on Pentium Pro CPU)
BIOS	Intel
Dimensions	305mm x 244mm
I/O Options	32-bit PCI slots (4), CD-ROM interface, floppy drive interface, green PC connector, IDE interfaces (2), parallel port, PS/2 mouse port, serial ports (2), IR connector, wavetable connector, telephony connector, audio out connector, microphone in connector, audio in connector, MIDI/game port, PS/2 keyboard
NPU Options	None



Continued on next page . . .

MAGITRONICS

A - P X 6 8 0 - 2 0 0 C

... continued from previous page

CONNECTIONS			
Purpose	Location	Purpose	Location
MIDI/game port	CN1	Chassis fan power	J7M1
Microphone in connector	CN2	IDE interface 1	J8J1
Audio in connector	CN3	Chassis fan power	J9A1
Audio out connector	CN4	IDE interface 2	J9J1
Serial port 1	CN5	Floppy drive interface	J9J2
Serial port 2	CN6	Front panel power switch	J10H1/pins 1 & 2
Parallel port	CN7	Green PC connector	J10H1/pins 3 & 4
PS/2 mouse port	CN8	IR connector	J10H1/pins 6 - 11
PS/2 keyboard	CN9	IDE interface LED	J10H1/pins 13 - 16
Wavetable connector	J1E1	Power LED	J10H1/pins 18 - 20
CD-ROM connector	J1E2	Reset switch	J10H1/pins 22 - 23
Telephony connector	J1F1	Speaker	J10H1/pins 24 - 27
Power connector	J5M1	32-bit PCI slots	PC1 - PC4

USER CONFIGURABLE SETTINGS		
Function	Label	Position
í CMOS memory normal operation	J6D1	Pins 20 & 22 closed
CMOS memory clear	J6D1	Pins 18 & 20 closed
í Password enabled	J6D1	Pins 27 & 29 closed
Password disabled	J6D1	Pins 25 & 27 closed
í Setup access enabled	J6D1	Pins 28 & 30 closed
Setup access disabled	J6D1	Pins 26 & 28 closed
í Flash BIOS normal operation	J6D1	Pins 4 & 6 closed
Flash BIOS recovery mode	J6D1	Pins 2 & 4 closed

DRAM CONFIGURATION		
Size	Bank 0	Bank 1
8MB	(2) 1M x 36	None
16MB	(2) 2M x 36	None
16MB	(2) 1M x 36	(2) 1M x 36
24MB	(2) 2M x 36	(2) 1M x 36
32MB	(2) 4M x 36	None
32MB	(2) 2M x 36	(2) 2M x 36
40MB	(2) 1M x 36	(2) 4M x 36
48MB	(2) 4M x 36	(2) 2M x 36
64MB	(2) 8M x 36	None
64MB	(2) 4M x 36	(2) 4M x 36
72MB	(2) 8M x 36	(2) 1M x 36
80MB	(2) 8M x 36	(2) 2M x 36
96MB	(2) 8M x 36	(2) 4M x 36
128MB	(2) 16M x 36	None
128MB	(2) 8M x 36	(2) 8M x 36
136MB	(2) 16M x 36	(2) 1M x 36

Continued on next page...

MAGITRONICS
A - P X 6 8 0 - 2 0 0 C

... continued from previous page

DRAM CONFIGURATION (CON'T)		
Size	Bank 0	Bank 1
144MB	(2) 16M x 36	(2) 2M x 36
160MB	(2) 16M x 36	(2) 4M x 36
192MB	(2) 16M x 36	(2) 8M x 36
256MB	(2) 16M x 36	(2) 16M x 36

Note: Board accepts EDO memory. Board also accepts x 32 SIMMs. Banks are interchangeable.

CACHE CONFIGURATION
Note: 256KB or 512KB cache is located on the Pentium Pro CPU.

CPU SPEED SELECTION			
CPU speed	Clock speed	Multiplier	J6D1
150MHz	60MHz	2.5x	10 & 12, 11 & 13, 17 & 19
166MHz	66MHz	2.5x	10 & 12, 11 & 13, 19 & 21
180MHz	60MHz	3x	9 & 11, 12 & 14, 17 & 19
200MHz	66MHz	3x	9 & 11, 12 & 14, 19 & 21

Note: Pins designated should be in the closed position.