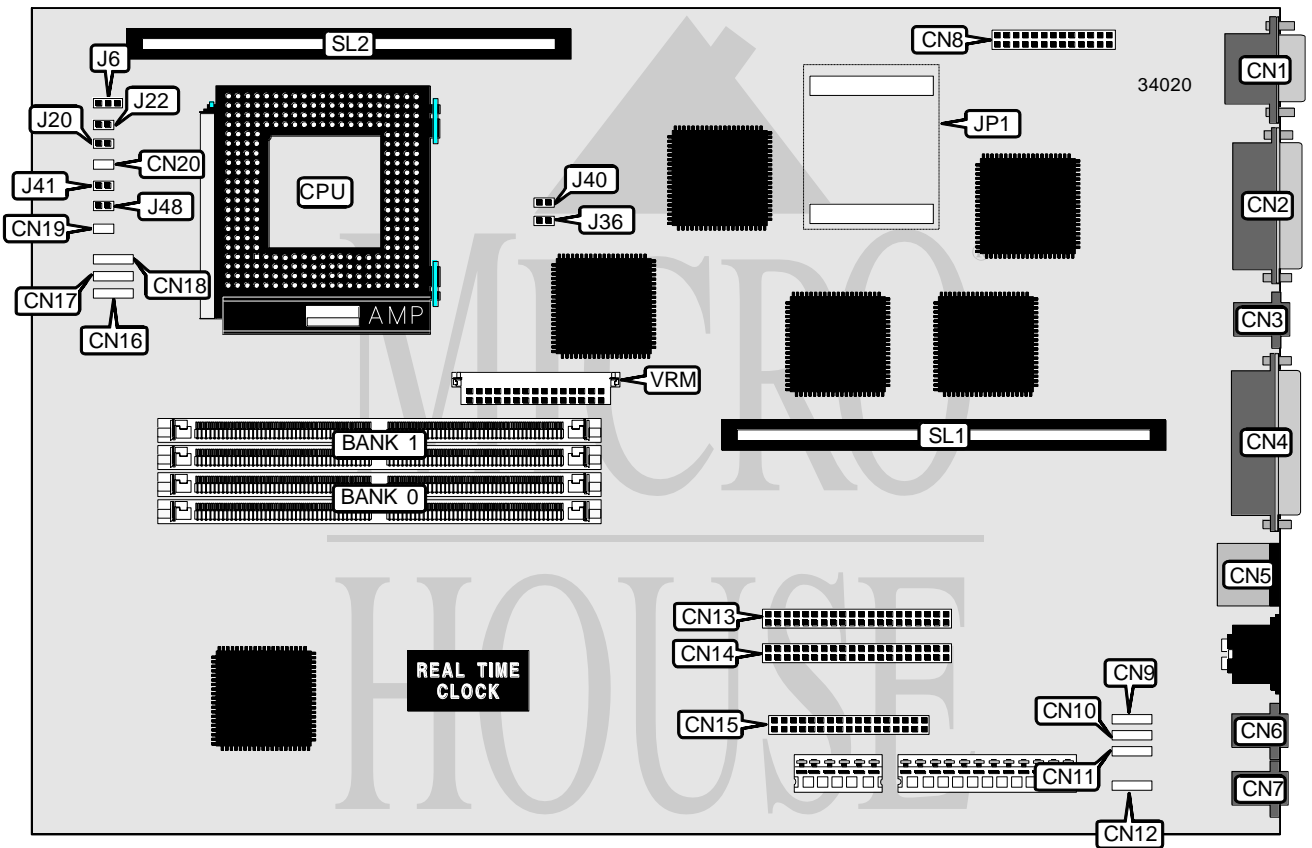


DIGITAL EQUIPMENT CORPORATION CELEBRIS GL

Processor	Pentium
Processor Speed	90/100/120/133MHz
Chip Set	Intel
Video Chip Set	Matrox
Maximum Onboard Memory	128MB (EDO supported)
Maximum Video Memory	8MB
Cache	256/512KB
BIOS	Unidentified
Dimensions	330mm x 218mm
I/O Options	Ethernet 10Base5 connector, Ethernet 10BaseT connector, floppy drive interface, IDE interfaces (2), parallel port, PS/2 mouse port, VGA feature connector, VGA port, riser slot, cache slot, VRM connector, line in connector, speaker out connector, microphone connector, CD-ROM audio out
NPU Options	None



Continued on next page. . .

DIGITAL EQUIPMENT CORPORATION CELEBRIS GL

... continued from previous page

CONNECTIONS			
Purpose	Location	Purpose	Location
VGA port	CN1	IDE interface 2	CN13
Ethernet 10Base2 connector	CN2	IDE interface 1	CN14
Ethernet 10BaseT connector	CN3	Floppy drive interface	CN15
Parallel port	CN4	Speaker	CN16
PS/2 mouse port	CN5	IDE active display	CN17
Line in connector	CN6	DC on switch	CN18
Speaker out connector	CN7	IDE interface LED	CN19
VGA feature connector	CN8	Chassis fan power	CN20
CD-ROM audio out	CN9	Riser slot	SL1
CD-ROM audio out	CN10	Cache slot	SL2
CD-ROM audio out	CN11	VRM connector	VRM
Microphone connector	CN12		

USER CONFIGURABLE SETTINGS		
Function	Label	Position
í Flash BIOS boot block disabled	J6	Pins 1 & 2 closed
Flash BIOS boot block enabled	J6	Pins 2 & 3 closed
í Password normal operation	J20	Open
Password clear	J20	Closed
í Flash BIOS normal operation	J22	Open
Flash BIOS recovery mode	J22	Closed

DRAM CONFIGURATION		
Size	Bank 0	Bank 1
8MB	(2) 1M x 32	None
16MB	(2) 2M x 32	None
16MB	(2) 1M x 32	(2) 1M x 32
24MB	(2) 1M x 32	(2) 2M x 32
32MB	(2) 4M x 32	None
32MB	(2) 2M x 32	(2) 2M x 32
40MB	(2) 1M x 32	(2) 4M x 32
48MB	(2) 2M x 32	(2) 4M x 32
64MB	(2) 8M x 32	None
64MB	(2) 4M x 32	(2) 4M x 32
72MB	(2) 1M x 32	(2) 8M x 32
80MB	(2) 2M x 32	(2) 8M x 32
96MB	(2) 4M x 32	(2) 8M x 32
128MB	(2) 8M x 32	(2) 8M x 32

Note: Board accepts EDO memory.

Continued on next page. . .

DIGITAL EQUIPMENT CORPORATION

CELEBRIS GL

... continued from previous page

CACHE CONFIGURATION	
Size	SL1
256KB	256KB module installed
512KB	512KB module installed

VIDEO MEMORY CONFIGURATION		
Size	Bank 0	JP1
2MB	2MB	None
8MB	2MB	Module installed

Note: Bank 0 is factory installed and is not configurable. The location of Bank 0 is unidentified.

CPU SPEED SELECTION						
CPU speed	Clock speed	Multiplier	J36	J40	J41	J48
90MHz	60MHz	1.5x	Closed	Open	Open	Open
100MHz	66MHz	1.5x	Closed	Closed	Open	Open
120MHz	60MHz	2x	Closed	Open	Closed	Open
133MHz	66MHz	2x	Closed	Closed	Closed	Open