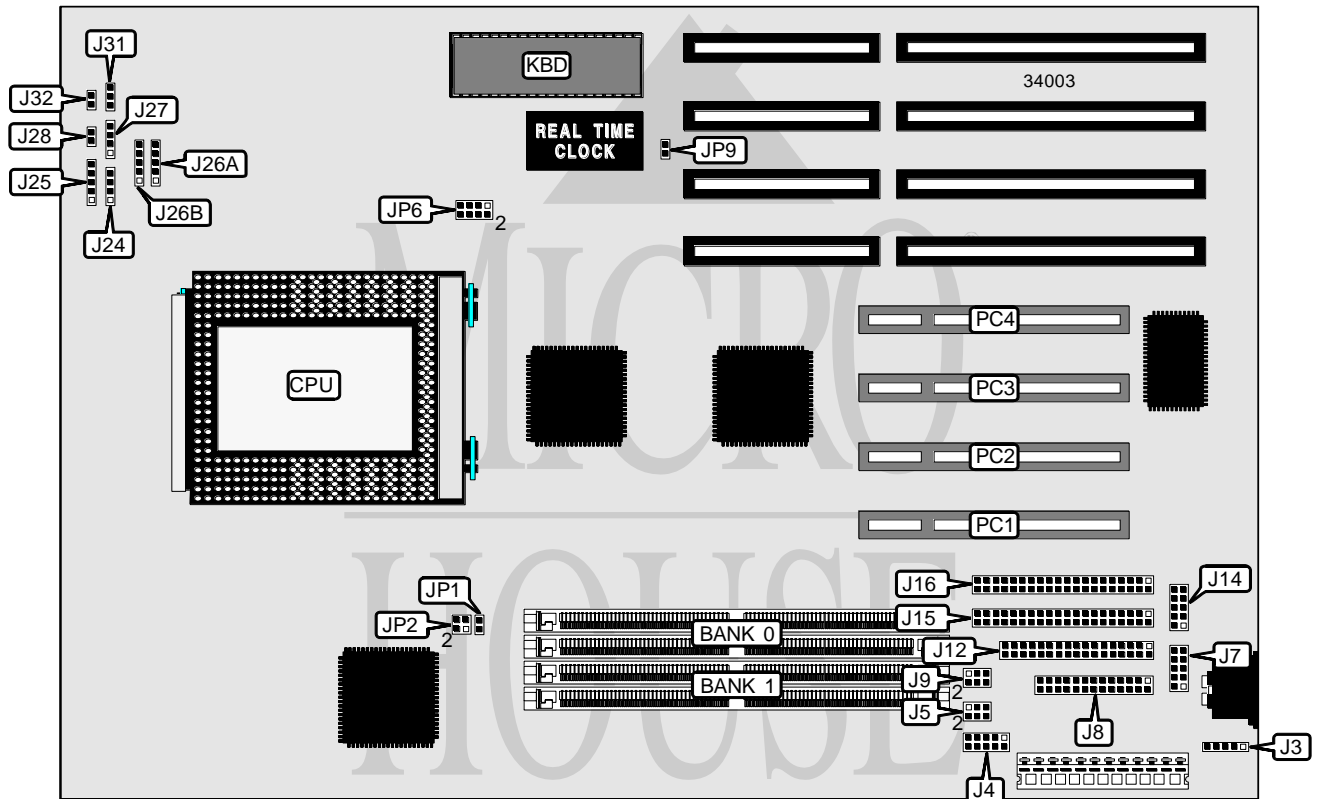


BCM ADVANCED RESEARCH, INC. SQ600

Processor	Pentium Pro
Processor Speed	120/133/150/166/180/200/210/233/240/266MHz
Chip Set	Intel
Video Chip Set	None
Maximum Onboard Memory	512MB (EDO supported)
Maximum Video Memory	None
Cache	256/512KB (located on Pentium Pro CPU)
BIOS	AMI
Dimensions	330mm x 221mm
I/O Options	32-bit PCI slots (4), floppy drive interface, green PC connector, IDE interfaces (2), parallel port, PS/2 mouse interface, serial ports (2), IR connectors (2), USB connector
NPU Options	None



Continued on next page. . .

BCM ADVANCED RESEARCH, INC.

SQ600

... continued from previous page

CONNECTIONS			
Purpose	Location	Purpose	Location
PS/2 mouse interface	J3	Power LED & keylock	J25
USB connector	J4	IR connector	J26A
Serial port 1	J7	IR connector (fast)	J26B
Parallel port	J8	IDE interface LED	J27
Floppy drive interface	J12	Green PC connector	J28
Serial port 2	J14	Chassis fan power	J31
IDE interface 1	J15	Reset switch	J32
IDE interface 2	J16	32-bit PCI slots	PC1 – PC4
Speaker	J24		

USER CONFIGURABLE SETTINGS		
Function	Label	Position
í CMOS memory normal operation	JP9	Open
CMOS memory clear	JP9	Closed

DRAM CONFIGURATION		
Size	Bank 0	Bank 1
8MB	(2) 1M x 36	None
16MB	(2) 2M x 36	None
16MB	(2) 1M x 36	(2) 1M x 36
24MB	(2) 2M x 36	(2) 1M x 36
32MB	(2) 4M x 36	None
32MB	(2) 2M x 36	(2) 2M x 36
40MB	(2) 4M x 36	(2) 1M x 36
48MB	(2) 4M x 36	(2) 2M x 36
64MB	(2) 8M x 36	None
64MB	(2) 4M x 36	(2) 4M x 36
72MB	(2) 8M x 36	(2) 1M x 36
80MB	(2) 8M x 36	(2) 2M x 36
96MB	(2) 8M x 36	(2) 4M x 36
128MB	(2) 8M x 36	(2) 8M x 36
128MB	(2) 16M x 36	None
136MB	(2) 16M x 36	(2) 1M x 36
144MB	(2) 16M x 36	(2) 2M x 36
160MB	(2) 16M x 36	(2) 4M x 36
192MB	(2) 16M x 36	(2) 8M x 36
256MB	(2) 32M x 36	None
256MB	(2) 16M x 36	(2) 16M x 36
264MB	(2) 32M x 36	(2) 1M x 36

Continued on next page. . .

BCM ADVANCED RESEARCH, INC.

SQ600

... continued from previous page

DRAM CONFIGURATION (CON'T)		
Size	Bank 0	Bank 1
272MB	(2) 32M x 36	(2) 2M x 36
288MB	(2) 32M x 36	(2) 4M x 36
320MB	(2) 32M x 36	(2) 8M x 36
384MB	(2) 32M x 36	(2) 16M x 36
512MB	(2) 32M x 36	(2) 32M x 36

Note: Board accepts EDO memory. Board also accepts x 32 SIMMs. Banks are interchangeable.

DRAM VOLTAGE CONFIGURATION		
Voltage	J5	J9
3.3v	Pins 3 & 5, 4 & 6 closed	Pins 3 & 5, 4 & 6 closed
5v	Pins 1 & 3, 2 & 4 closed	Pins 1 & 3, 2 & 4 closed

CACHE CONFIGURATION
Note: 256KB/512KB cache is located on the Pentium Pro CPU.

CPU SPEED SELECTION			
Speed	JP1	JP2	JP6
120MHz	Open	1 & 2	1 & 2, 3 & 4, 5 & 6, 7 & 8
133MHz	Closed	3 & 4	1 & 2, 3 & 4, 5 & 6, 7 & 8
150MHz	Open	1 & 2	3 & 4, 5 & 6, 7 & 8
166MHz	Closed	3 & 4	3 & 4, 5 & 6, 7 & 8
180MHz	Open	1 & 2	1 & 2, 5 & 6, 7 & 8
200MHz	Closed	3 & 4	1 & 2, 5 & 6, 7 & 8
210MHz	Open	1 & 2	5 & 6, 7 & 8
233MHz	Closed	3 & 4	5 & 6, 7 & 8
240MHz	Open	1 & 2	1 & 2, 3 & 4, 7 & 8
266MHz	Closed	3 & 4	1 & 2, 3 & 4, 7 & 8

Note: Pins designated should be in the closed position.