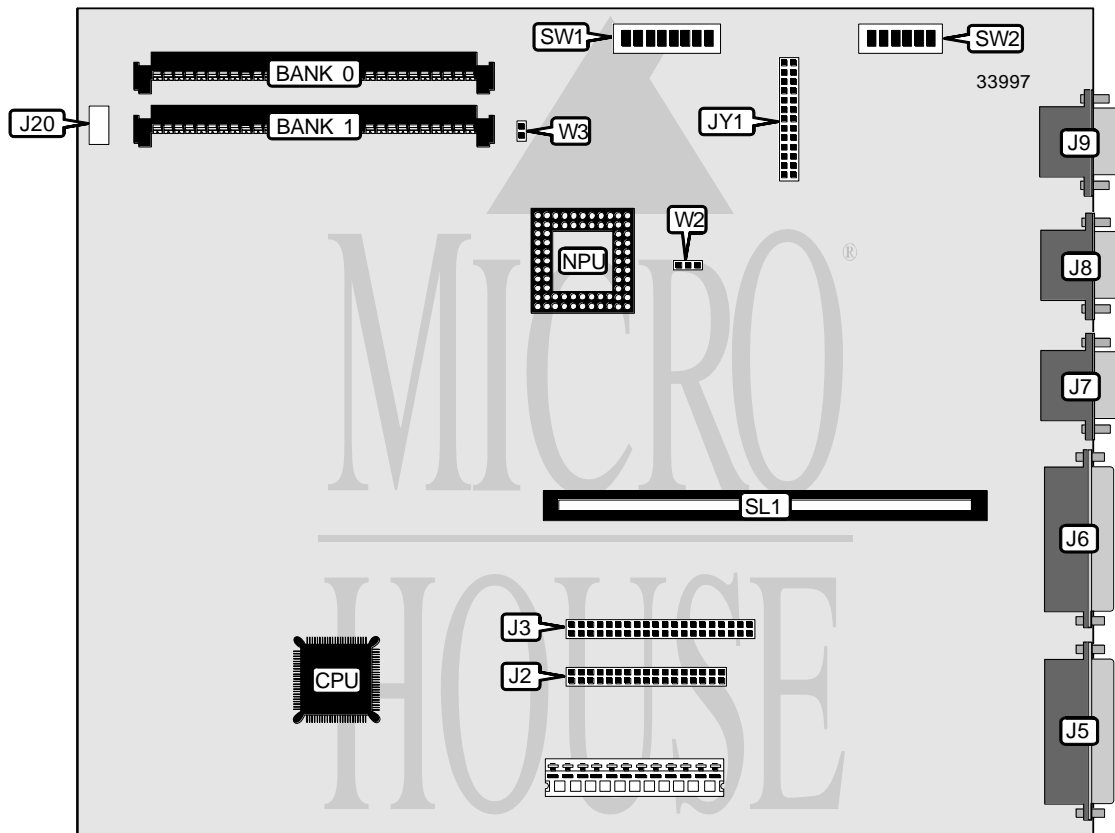


DIGITAL EQUIPMENT CORPORATION PC 386SX CE (P3348)

Processor	80386SX
Processor Speed	20MHz
Chip Set	Unidentified
Video Chip Set	Unidentified
Maximum Onboard Memory	8MB
Maximum Video Memory	Unidentified
Cache	None
BIOS	Unidentified
Dimensions	254mm x 218mm
I/O Options	Floppy drive interface, IDE interface, parallel port, serial ports (2), VGA feature connector, VGA port, TTL video port, riser slot
NPU Options	80387SX



CONNECTIONS			
Purpose	Location	Purpose	Location
Floppy drive interface	J2	VGA port	J8
IDE interface	J3	TTL video port	J9
Parallel port	J5	Front panel connector	J20
Serial port 2	J6	VGA feature connector	JY1
Serial port 1	J7	Riser slot	SL1

Continued on next page. . .

DIGITAL EQUIPMENT CORPORATION

PC 386SX CE (P3348)

... continued from previous page

USER CONFIGURABLE SETTINGS		
Function	Label	Position
í Normal mode enabled	SW1/1	Off
Manufacturing mode enabled	SW1/1	On
í Normal mode enabled	SW1/2	Off
Burn in mode enabled	SW1/2	On
Video speed select fast	SW1/3	Off
Video speed select slow	SW1/3	On
Monitor type select monochrome	SW1/4	Off
Monitor type select color	SW1/4	On
On board video enabled	SW1/5	On
On board video disabled	SW1/5	Off
Floppy drive interface enabled	SW1/6	On
Floppy drive interface disabled	SW1/6	Off
IDE interface enabled	SW1/7	On
IDE interface disabled	SW1/7	Off
í Factory configured - do not alter	SW1/8	Unidentified
í Factory configured - do not alter	SW2/6	Unidentified
í Clock signal to NPU equals CPU	W2	Pins 2 & 3 closed
Clock signal to NPU does not equal CPU	W2	Pins 1 & 2 closed
NPU synchronous with CPU	W3	Closed
NPU asynchronous with CPU	W3	Open

DRAM CONFIGURATION		
Size	Bank 0	Bank 1
1MB	(1) 256K x 36	None
2MB	(1) 256K x 36	(1) 256K x 36
4MB	(1) 1M x 36	None
5MB	(1) 256K x 36	(1) 1M x 36
8MB	(1) 1M x 36	(1) 1M x 36

VIDEO SELECTION (VGA CONTROLLER ONLY ADAPTER IN SYSTEM)					
Monitor	SW2/1	SW2/2	SW2/3	SW2/4	SW2/5
On	Off	Off	On	Off	Off
ED 350 line	Off	On	On	Off	Off
ED 200 line	On	On	On	Off	Off
CD 80 x 25	Off	Off	Off	On	Off
CD 40 x 25	On	Off	Off	On	Off
Analog	N/A	N/A	N/A	N/A	On

Continued on next page...

DIGITAL EQUIPMENT CORPORATION
PC 386SX CE (P3348)

... continued from previous page

VIDEO SELECTION (VGA CONTROLLER AS PRIMARY ADAPTER)						
Primary	Secondary	SW2/1	SW2/2	SW2/3	SW2/4	SW2/5
Monochrome	Color 80 x 25 or none	Off	Off	On	Off	Off
Monochrome	Color 40 x 25 or none	On	Off	On	Off	Off
Enhanced 350 line	Monochrome or none	Off	On	On	Off	Off
Enhanced 200 line	Monochrome or none	On	On	On	Off	Off
Color 80 x 25	Monochrome or none	Off	Off	Off	On	Off
Color 40 x 25	Monochrome or none	On	Off	Off	On	Off

VIDEO SELECTION(VGA CONTROLLER AS SECONDARY ADAPTER)						
Primary	Secondary	SW2/1	SW2/2	SW2/3	SW2/4	SW2/5
Color 80 x 25	Monochrome	Off	On	Off	On	Off
Color 40 x 25	Monochrome	On	On	Off	On	Off
Monochrome	Enhanced 350 line	Off	Off	On	On	Off
Monochrome	Enhanced 200 line	On	Off	On	On	Off
Monochrome	Color 80 x 25	Off	On	On	On	Off
Monochrome	Color 40 x 25	On	On	On	On	Off