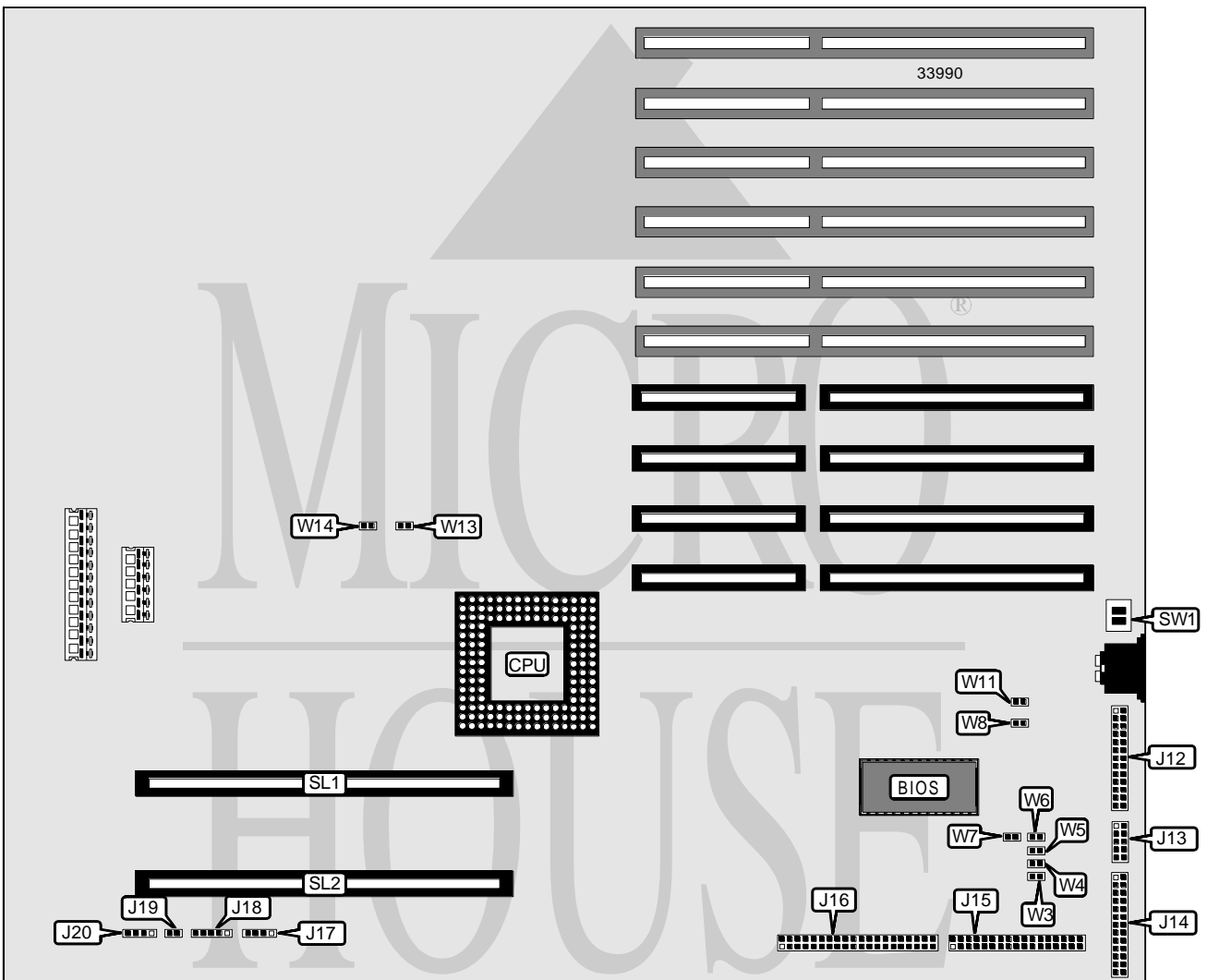


DIGITAL EQUIPMENT CORPORATION PC 486 CE

Processor	80486
Processor Speed	25/33MHz
Chip Set	Unidentified
Video Chip Set	None
Maximum Onboard Memory	128MB
Maximum Video Memory	None
Cache	None
BIOS	Unidentified
Dimensions	350mm x 329mm
I/O Options	External memory slots (2), floppy drive interface, IDE interface, parallel port, serial ports (2)
NPU Options	None



Continued on next page. . .

DIGITAL EQUIPMENT CORPORATION

PC 486 CE

... continued from previous page

CONNECTIONS			
Purpose	Location	Purpose	Location
Parallel port	J12	Speaker	J17
Serial port	J13	Power LED & keylock	J18
Serial port	J14	Reset switch	J19
IDE interface	J15	LED connector	J20
Floppy drive interface	J16	External memory cards	SL1 & SL2

USER CONFIGURABLE SETTINGS		
Function	Label	Position
í Speaker volume select normal volume	W3	Open
Speaker volume select low volume	W3	Closed
í IDE interface enabled	W5	Open
IDE interface disabled	W5	Closed
í I/O recovery time select extra time provided	W14	Closed
I/O recovery time select no extra time provided	W14	Open
Monitor type select color	SW1/1	On
Monitor type select monochrome	SW1/1	Off
í Factory configured - do not alter	SW1/2	Off

DRAM CONFIGURATION				
Size	Bank 0	Bank 1	Bank 2	Bank 3
4MB	(1) 1M x 36	None	None	None
8MB	(1) 2M x 36	None	None	None
8MB	(1) 1M x 36	(1) 1M x 36	None	None
12MB	(1) 2M x 36	(1) 1M x 36	None	None
12MB	(1) 1M x 36	(1) 1M x 36	(1) 1M x 36	None
16MB	(1) 4M x 36	None	None	None
16MB	(1) 2M x 36	(1) 1M x 36	(1) 1M x 36	None
16MB	(1) 2M x 36	(1) 2M x 36	None	None
16MB	(1) 1M x 36	(1) 1M x 36	(1) 1M x 36	(1) 1M x 36
20MB	(1) 4M x 36	(1) 1M x 36	None	None
20MB	(1) 2M x 36	(1) 1M x 36	(1) 1M x 36	(1) 1M x 36
20MB	(1) 1M x 36	(1) 2M x 36	(1) 2M x 36	None
20MB	(1) 1M x 36	(1) 4M x 36	None	None
24MB	(1) 4M x 36	(1) 1M x 36	(1) 1M x 36	None
24MB	(1) 4M x 36	(1) 2M x 36	None	None
24MB	(1) 2M x 36	(1) 2M x 36	(1) 2M x 36	None
28MB	(1) 4M x 36	(1) 1M x 36	(1) 1M x 36	(1) 1M x 36
28MB	(1) 1M x 36	(1) 2M x 36	(1) 2M x 36	(1) 2M x 36
32MB	(1) 8M x 36	None	None	None
32MB	(1) 4M x 36	(1) 2M x 36	(1) 2M x 36	None
32MB	(1) 4M x 36	(1) 4M x 36	None	None

Continued on next page. ...

DIGITAL EQUIPMENT CORPORATION

PC 486 CE

... continued from previous page

DRAM CONFIGURATION (CON'T)				
Size	Bank 0	Bank 1	Bank 2	Bank 3
32MB	(1) 2M x 36	(1) 2M x 36	(1) 2M x 36	(1) 2M x 36
36MB	(1) 8M x 36	(1) 1M x 36	None	None
40MB	(1) 8M x 36	(1) 1M x 36	(1) 1M x 36	None
40MB	(1) 8M x 36	(1) 2M x 36	None	None
40MB	(1) 4M x 36	(1) 2M x 36	(1) 2M x 36	(1) 2M x 36
44MB	(1) 8M x 36	(1) 1M x 36	(1) 1M x 36	(1) 1M x 36
48MB	(1) 8M x 36	(1) 2M x 36	(1) 2M x 36	None
48MB	(1) 8M x 36	(1) 4M x 36	None	None
48MB	(1) 4M x 36	(1) 4M x 36	(1) 4M x 36	None
52MB	(1) 1M x 36	(1) 4M x 36	(1) 4M x 36	(1) 4M x 36
56MB	(1) 8M x 36	(1) 2M x 36	(1) 2M x 36	(1) 2M x 36
56MB	(1) 2M x 36	(1) 4M x 36	(1) 4M x 36	(1) 4M x 36
64MB	(1) 8M x 36	(1) 4M x 36	(1) 4M x 36	None
64MB	(1) 8M x 36	(1) 8M x 36	None	None
64MB	(1) 4M x 36	(1) 4M x 36	(1) 4M x 36	(1) 4M x 36

Note: To use 128MB, install two fully populated memory cards in SL1 & SL2. If only one card is used, install in SL1.

CPU SPEED SELECTION	
Speed	W13
25MHz	Closed
33MHz	Open

IDE CONTROLLER SELECTION			
Setting	W6	W8	W11
í Enabled	Open	Closed	Closed
Disabled	Closed	Open	Open

BURN IN MODE SELECTION		
Setting	W4	W7
í Disabled	Open	Closed
Enabled	Closed	Open