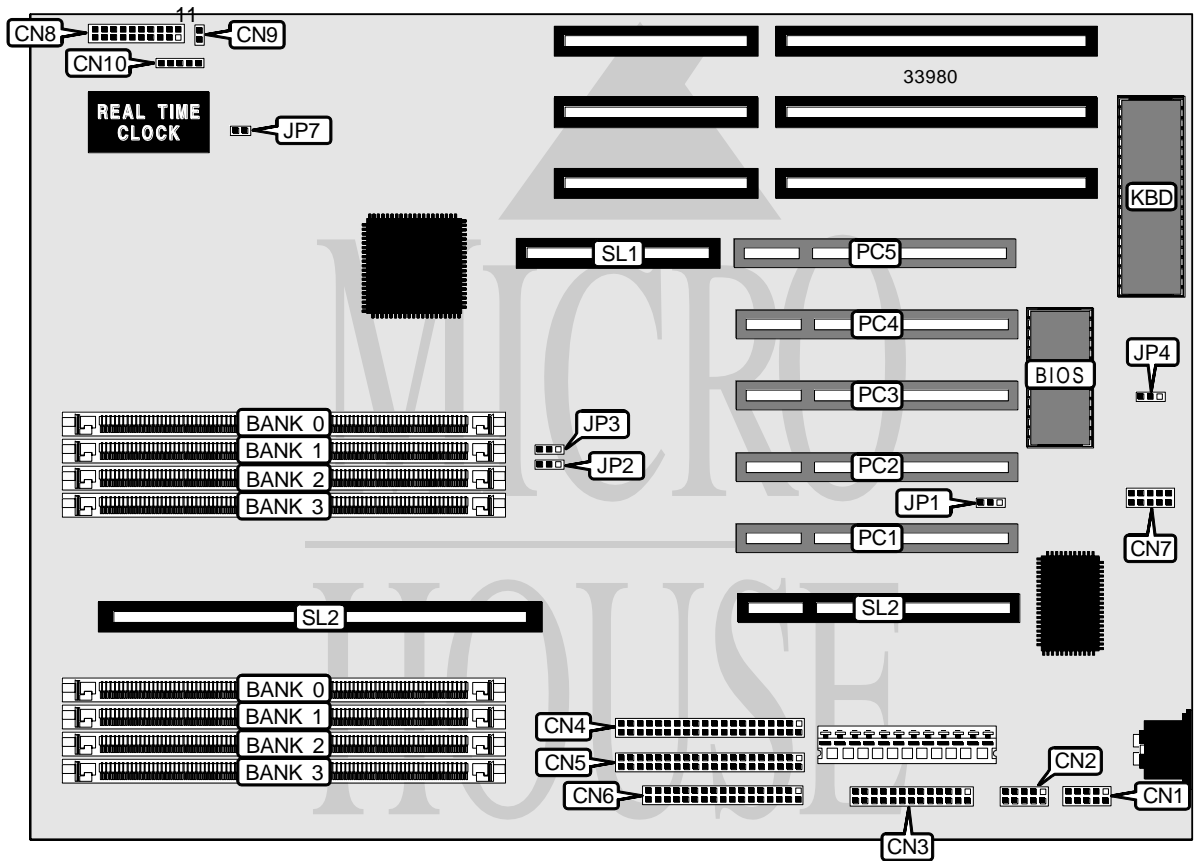


# ASUS COMPUTER INTERNATIONAL P/I-P65UP5

<b>Processor</b>	Pentium/Pentium Pro (located on CPU card)
<b>Processor Speed</b>	75/90/100/120/133/150/166/180/200MHz
<b>Chip Set</b>	Intel
<b>Video Chip Set</b>	None
<b>Maximum Onboard Memory</b>	512MB (EDO supported)
<b>Maximum Video Memory</b>	None
<b>Cache</b>	256/512KB (located on CPU card)
<b>BIOS</b>	Unidentified
<b>Dimensions</b>	330mm x 218mm
<b>I/O Options</b>	32-bit PCI slots (5), floppy drive interface, green PC connector, IDE interfaces (2), parallel port, serial ports (2), CPU slot, IR connector, USB connector, MediaBus slot
<b>NPU Options</b>	None



Continued on next page...

# ASUS COMPUTER INTERNATIONAL

## P/I - P 6 5 U P 5

... continued from previous page

CONNECTIONS			
Purpose	Location	Purpose	Location
Serial port 1	CN1	Power LED	CN8 pins 12 & 13
Serial port 2	CN2	Green PC connector	CN8 pins 14 & 15
Parallel port	CN3	ATX power switch	CN8 pins 16 & 17
IDE interface 1	CN4	Reset switch	CN8 pins 19 & 20
IDE interface 2	CN5	IDE interface LED	CN9
Floppy drive interface	CN6	IR connector	CN10
USB connector	CN7	32-bit PCI slots	PC1 – PC5
Power LED & keylock	CN8 pins 1 - 5	MediaBus slot	SL1
Speaker	CN8 pins 7 - 10	CPU slot	SL2

USER CONFIGURABLE SETTINGS		
Function	Label	Position
? On board I/O enabled	JP1	Pins 1 & 2 closed
On board I/O disabled	JP1	Pins 2 & 3 closed
? Flash BIOS write protect disabled	JP4	Pins 1 & 2 closed
Flash BIOS write protect enabled	JP4	Pins 2 & 3 closed
? CMOS memory normal operation	JP7	Open
CMOS memory clear	JP7	Closed

DRAM CONFIGURATION				
Size	Bank 0	Bank 1	Bank 2	Bank 3
8MB	(2) 1M x 36	None	None	None
16MB	(2) 1M x 36	(2) 1M x 36	None	None
16MB	(2) 2M x 36	None	None	None
24MB	(2) 1M x 36	(2) 1M x 36	(2) 1M x 36	None
24MB	(2) 1M x 36	(2) 2M x 36	None	None
24MB	(2) 2M x 36	(2) 1M x 36	None	None
32MB	(2) 1M x 36	(2) 1M x 36	(2) 1M x 36	(2) 1M x 36
32MB	(2) 2M x 36	(2) 1M x 36	(2) 1M x 36	None
32MB	(2) 2M x 36	(2) 2M x 36	None	None
32MB	(2) 4M x 36	None	None	None
40MB	(2) 1M x 36	(2) 2M x 36	(2) 2M x 36	None
40MB	(2) 1M x 36	(2) 4M x 36	None	None
40MB	(2) 2M x 36	(2) 1M x 36	(2) 1M x 36	(2) 1M x 36
40MB	(2) 4M x 36	(2) 1M x 36	None	None
48MB	(2) 2M x 36	(2) 2M x 36	(2) 2M x 36	None
48MB	(2) 2M x 36	(2) 4M x 36	None	None
48MB	(2) 4M x 36	(2) 1M x 36	(2) 1M x 36	None
48MB	(2) 4M x 36	(2) 2M x 36	None	None
56MB	(2) 1M x 36	(2) 2M x 36	(2) 2M x 36	(2) 2M x 36
56MB	(2) 4M x 36	(2) 1M x 36	(2) 1M x 36	(2) 1M x 36

Continued on next page. ...

# ASUS COMPUTER INTERNATIONAL

## P/I-P65UP5

... continued from previous page

DRAM CONFIGURATION (CON'T)				
Size	Bank 0	Bank 1	Bank 2	Bank 3
64MB	(2) 2M x 36	(2) 2M x 36	(2) 2M x 36	(2) 2M x 36
64MB	(2) 4M x 36	(2) 2M x 36	(2) 2M x 36	None
64MB	(2) 4M x 36	(2) 4M x 36	None	None
64MB	(2) 8M x 36	None	None	None
72MB	(2) 1M x 36	(2) 4M x 36	(2) 4M x 36	None
72MB	(2) 1M x 36	(2) 8M x 36	None	None
72MB	(2) 8M x 36	(2) 1M x 36	None	None
80MB	(2) 2M x 36	(2) 4M x 36	(2) 4M x 36	None
80MB	(2) 2M x 36	(2) 8M x 36	None	None
80MB	(2) 4M x 36	(2) 2M x 36	(2) 2M x 36	(2) 2M x 36
80MB	(2) 8M x 36	(2) 1M x 36	(2) 1M x 36	None
80MB	(2) 8M x 36	(2) 2M x 36	None	None
88MB	(2) 8M x 36	(2) 1M x 36	(2) 1M x 36	(2) 1M x 36
96MB	(2) 4M x 36	(2) 4M x 36	(2) 4M x 36	None
96MB	(2) 4M x 36	(2) 8M x 36	None	None
96MB	(2) 8M x 36	(2) 2M x 36	(2) 2M x 36	None
96MB	(2) 8M x 36	(2) 4M x 36	None	None
104MB	(2) 1M x 36	(2) 4M x 36	(2) 4M x 36	(2) 4M x 36
112MB	(2) 2M x 36	(2) 4M x 36	(2) 4M x 36	(2) 4M x 36
112MB	(2) 8M x 36	(2) 2M x 36	(2) 2M x 36	(2) 2M x 36
128MB	(2) 4M x 36	(2) 4M x 36	(2) 4M x 36	(2) 4M x 36
128MB	(2) 8M x 36	(2) 4M x 36	(2) 4M x 36	None
128MB	(2) 8M x 36	(2) 8M x 36	None	None
128MB	(2) 16M x 36	None	None	None
136MB	(2) 1M x 36	(2) 8M x 36	(2) 8M x 36	None
136MB	(2) 16M x 36	(2) 1M x 36	None	None
144MB	(2) 2M x 36	(2) 8M x 36	(2) 8M x 36	None
144MB	(2) 16M x 36	(2) 1M x 36	(2) 1M x 36	None
144MB	(2) 16M x 36	(2) 2M x 36	None	None
152MB	(2) 16M x 36	(2) 1M x 36	(2) 1M x 36	(2) 1M x 36
160MB	(2) 4M x 36	(2) 8M x 36	(2) 8M x 36	None
160MB	(2) 8M x 36	(2) 4M x 36	(2) 4M x 36	(2) 4M x 36
160MB	(2) 16M x 36	(2) 2M x 36	(2) 2M x 36	None
160MB	(2) 16M x 36	(2) 4M x 36	None	None
176MB	(2) 16M x 36	(2) 2M x 36	(2) 2M x 36	(2) 2M x 36
192MB	(2) 8M x 36	(2) 8M x 36	(2) 8M x 36	None
192MB	(2) 16M x 36	(2) 4M x 36	(2) 4M x 36	None
192MB	(2) 16M x 36	(2) 8M x 36	None	None
200MB	(2) 1M x 36	(2) 8M x 36	(2) 8M x 36	(2) 8M x 36
208MB	(2) 2M x 36	(2) 8M x 36	(2) 8M x 36	(2) 8M x 36

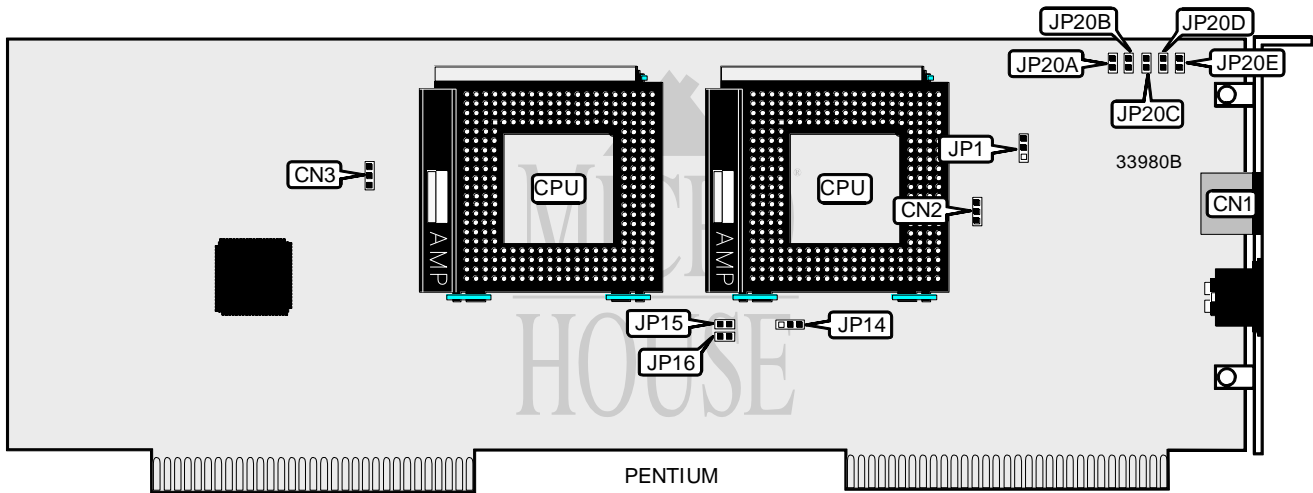
Continued on next page. . .

# ASUS COMPUTER INTERNATIONAL P/I-P65UP5

... continued from previous page

DRAM CONFIGURATION (CON'T)				
Size	Bank 0	Bank 1	Bank 2	Bank 3
224MB	(2) 4M x 36	(2) 8M x 36	(2) 8M x 36	(2) 8M x 36
224MB	(2) 16M x 36	(2) 4M x 36	(2) 4M x 36	(2) 4M x 36
256MB	(2) 8M x 36	(2) 8M x 36	(2) 8M x 36	(2) 8M x 36
256MB	(2) 16M x 36	(2) 8M x 36	(2) 8M x 36	None
256MB	(2) 16M x 36	(2) 16M x 36	None	None

Note: Board accepts EDO memory. Board also accepts x 32 SIMMs. Banks are interchangeable.



CONNECTIONS			
Purpose	Location	Purpose	Location
PS/2 mouse port	CN1	Chassis fan power	CN3
Chassis fan power	CN2		

**CACHE CONFIGURATION**  
 Note: Board is factory installed with 512KB cache.

CPU SPEED SELECTION				
CPU speed	Clock speed	Multiplier	JP15	JP16
75MHz	50MHz	1.5x	Open	Open
90MHz	60MHz	1.5x	Open	Open
100MHz	66MHz	1.5x	Open	Open
120MHz	60MHz	2x	Open	Closed
133MHz	66MHz	2x	Open	Closed
150MHz	60MHz	2.5x	Closed	Closed
166MHz	66MHz	2.5x	Closed	Closed
200MHz	66MHz	3x	Closed	Open

Continued on next page. . .

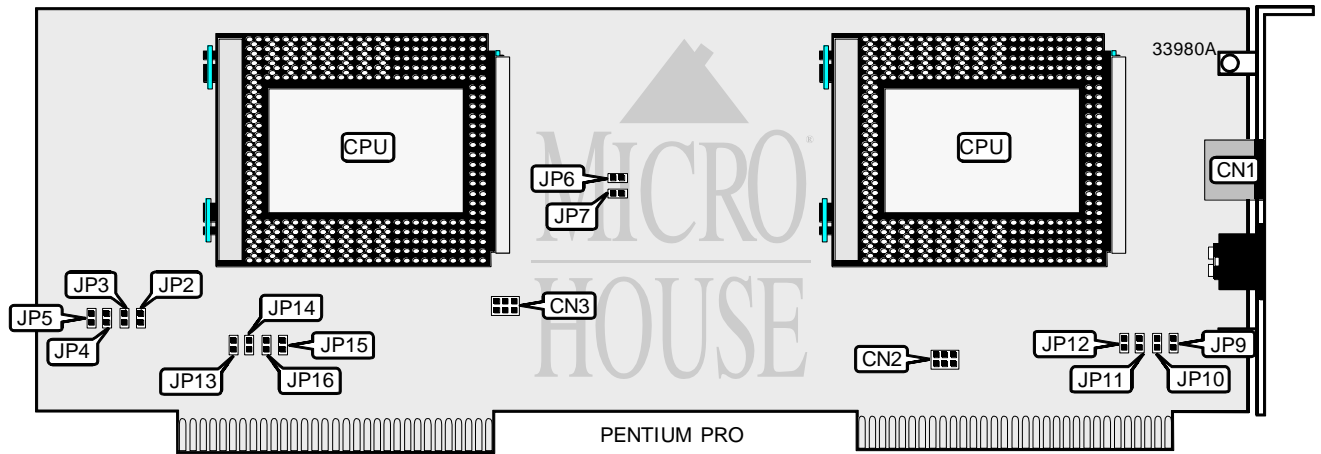
# ASUS COMPUTER INTERNATIONAL P/I-P65UP5

... continued from previous page

CPU TYPE SELECTION	
Type	JP14
Single CPU	Pins 2 & 3 closed
í Dual CPUs	Pins 1 & 2 closed

CPU TYPE SELECTION	
Type	JP1
STD/VR	Pins 1 & 2 closed
VRE	Pins 2 & 3 closed

CPU VOLTAGE SELECTION					
Voltage	JP20A	JP20B	JP20C	JP20D	JP20E
2.5v	Closed	Open	Open	Open	Open
2.7v	Open	Closed	Open	Open	Open
2.8v	Open	Open	Closed	Open	Open
2.9v	Open	Open	Open	Closed	Open
Reserved	Open	Open	Open	Open	Closed



CONNECTIONS			
Purpose	Location	Purpose	Location
Chassis fan power	CN1	PS/2 mouse port	CN3
Chassis fan power	CN2		

**CACHE CONFIGURATION**  
Note: 256KB/512KB cache is located on the Pentium Pro CPU.

Continued on next page...

# ASUS COMPUTER INTERNATIONAL

## P/I - P 6 5 U P 5

... continued from previous page

CPU SPEED SELECTION						
CPU speed	Clock speed	Multiplier	JP2	JP3	JP6	JP7
150MHz	60MHz	2.5x	1 & 2	2 & 3	Open	Closed
166MHz	66MHz	2.5x	2 & 3	1 & 2	Closed	Open
180MHz	60MHz	3x	1 & 2	2 & 3	Open	Closed
200MHz	66MHz	3x	2 & 3	1 & 2	Closed	Open

Note: Pins designated should be in the closed position.

CPU SPEED SELECTION (CON'T)						
CPU speed	Clock speed	Multiplier	JP13	JP14	JP15	JP16
150MHz	60MHz	2.5x	Closed	Open	Closed	Closed
166MHz	66MHz	2.5x	Closed	Open	Closed	Closed
180MHz	60MHz	3x	Closed	Closed	Open	Closed
200MHz	66MHz	3x	Closed	Closed	Open	Closed

CPU VOLTAGE SELECTION (CPU 1)				
Voltage	JP2	JP3	JP4	JP5
2.1v	Open	Open	Open	Closed
2.2v	Open	Open	Closed	Open
2.3v	Open	Open	Closed	Closed
2.4v	Open	Closed	Open	Open
2.5v	Open	Closed	Open	Closed
2.6v	Open	Closed	Closed	Open
2.7v	Open	Closed	Closed	Closed
2.8v	Closed	Open	Open	Open
2.9v	Closed	Open	Open	Closed
3.0v	Closed	Open	Closed	Open
3.1v	Closed	Open	Closed	Closed
3.2v	Closed	Closed	Open	Open
3.3v	Closed	Closed	Open	Closed
3.4v	Closed	Closed	Closed	Open
3.5v	Closed	Closed	Closed	Closed

Continued on next page. . .

# ASUS COMPUTER INTERNATIONAL

## P/I-P65UP5

... continued from previous page

CPU VOLTAGE SELECTION (CPU 2)				
Voltage	JP9	JP10	JP11	JP12
2.1v	Closed	Open	Open	Open
2.2v	Open	Closed	Open	Open
2.3v	Closed	Closed	Open	Open
2.4v	Open	Open	Closed	Open
2.5v	Closed	Open	Closed	Open
2.6v	Open	Closed	Closed	Open
2.7v	Closed	Closed	Closed	Open
2.8v	Open	Open	Open	Closed
2.9v	Closed	Open	Open	Closed
3.0v	Open	Closed	Open	Closed
3.1v	Closed	Closed	Open	Closed
3.2v	Open	Open	Closed	Closed
3.3v	Closed	Open	Closed	Closed
3.4v	Open	Closed	Closed	Closed
3.5v	Closed	Closed	Closed	Closed