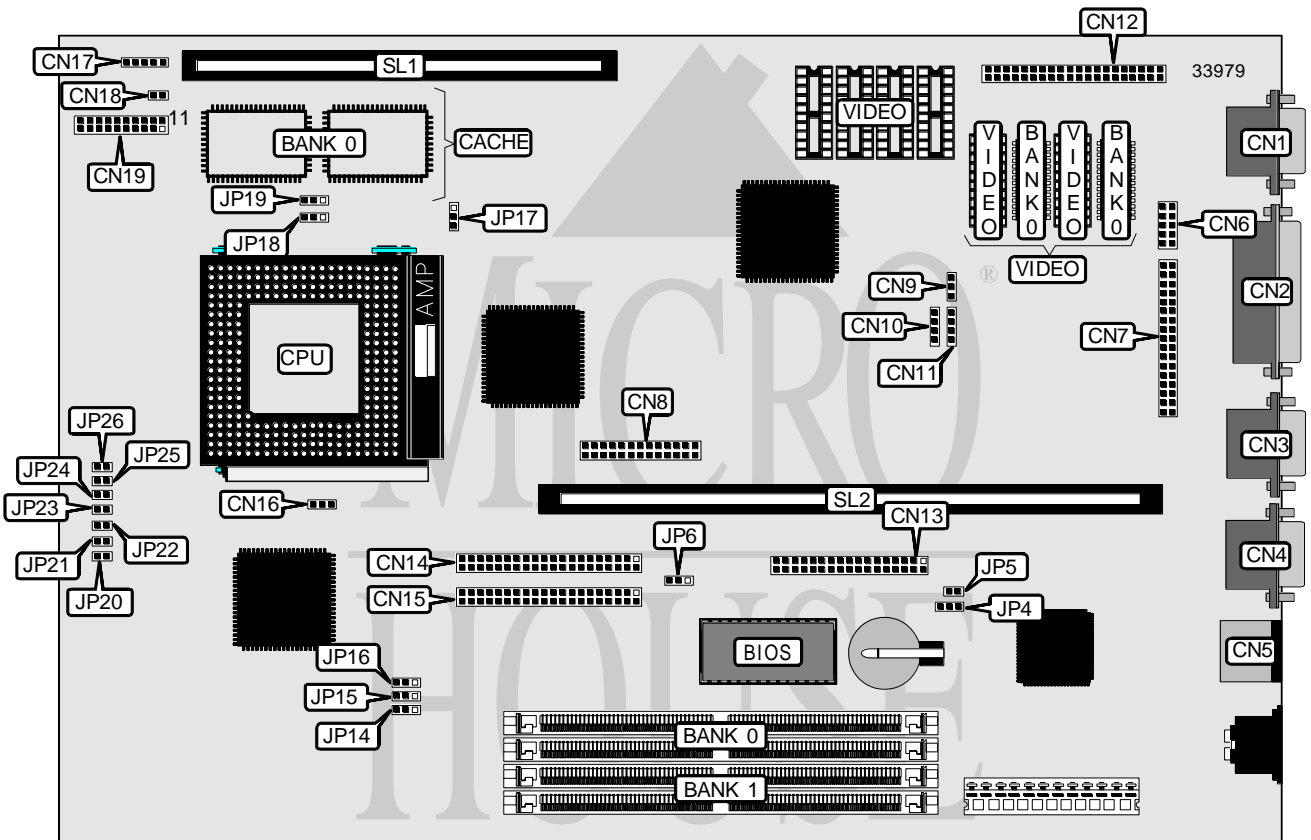


ASUS COMPUTER INTERNATIONAL

P/I-AP55TV

Processor	CX M1/AM K5/Pentium
Processor Speed	75/90/100/120/133/150/166/180/200MHz
Chip Set	Intel
Video Chip Set	ATI
Maximum Onboard Memory	128MB (EDO supported)
Maximum Video Memory	4MB
Cache	256/512KB
BIOS	Unidentified
Dimensions	330mm x 218mm
I/O Options	CD-ROM interfaces (3), floppy drive interface, green PC connector, IDE interfaces (2), parallel port, PS/2 mouse port, serial ports (2), VGA port, riser slot, cache slot, IR connector, USB connector, audio connector, wavetable connector, AMC connector software power on switch, software power on connector
NPU Options	None



Continued on next page. . .

ASUS COMPUTER INTERNATIONAL

P/I - AP55TV

... continued from previous page

CONNECTIONS			
Purpose	Location	Purpose	Location
VGA port	CN1	IDE interface 2	CN15
Parallel port	CN2	Chassis fan power	CN16
Serial port 2	CN3	IR connector	CN17
Serial port 1	CN4	IDE interface LED	CN18
PS/2 mouse port	CN5	Power LED & keylock	CN19 pins 1 - 5
USB connector	CN6	Speaker	CN19 pins 7 - 10
Audio connector	CN7	Power LED	CN19 pins 12 & 13
Wavetable connector	CN8	Green PC connector	CN19 pins 14 & 15
Panasonic CD in	CN9	Reset switch	CN19 pins 19 & 20
Sony CD in	CN10	Software power on switch	JP4
Mistumi CD in	CN11	Software power on connector	JP5
AMC connector	CN12	Cache slot	SL1
Floppy drive interface	CN13	Riser slot	SL2
IDE interface 1	CN14		

USER CONFIGURABLE SETTINGS		
Function	Label	Position
? Flash BIOS write protect disabled	JP6	Pins 1 & 2 closed
Flash BIOS write protect enabled	JP6	Pins 2 & 3 closed

DRAM CONFIGURATION		
Size	Bank 0	Bank 1
8MB	(2) 1M x 36	None
16MB	(2) 2M x 36	None
16MB	(2) 1M x 36	(2) 1M x 36
24MB	(2) 2M x 36	(2) 1M x 36
32MB	(2) 4M x 36	None
32MB	(2) 2M x 36	(2) 2M x 36
40MB	(2) 4M x 36	(2) 1M x 36
48MB	(2) 4M x 36	(2) 2M x 36
64MB	(2) 8M x 36	None
64MB	(2) 4M x 36	(2) 4M x 36
72MB	(2) 8M x 36	(2) 1M x 36
80MB	(2) 8M x 36	(2) 2M x 36
96MB	(2) 8M x 36	(2) 4M x 36
128MB	(2) 8M x 36	(2) 8M x 36

Note: Board accepts EDO memory. Banks are interchangeable.

Continued on next page...

ASUS COMPUTER INTERNATIONAL

P/I-AP55TV

... continued from previous page

CACHE CONFIGURATION			
Size	Bank 0	Bank 1	TAG
256KB (A)	None	256KB module installed	Unidentified
256KB (B)	(2) 32K x 32	Not installed	Unidentified
512KB (A)	(2) 32K x 32	256KB module installed	Unidentified
512KB (B)	None	512KB module installed	Unidentified
512KB (C)	(2) 64K x 32	Not installed	Unidentified

CACHE JUMPER CONFIGURATION	
Size	JP17
256KB (A)	Pins 2 & 3 closed
256KB (B)	Pins 2 & 3 closed
512KB (A)	Pins 1 & 2 closed
512KB (B)	Pins 1 & 2 closed
512KB (C)	Pins 1 & 2 closed

VIDEO MEMORY CONFIGURATION				
Size	Bank 0	Bank 1	Bank 2	Bank 3
1MB	(2) 256K x 16	None	None	None
2MB	(2) 256K x 16	(2) 256K x 16	None	None
3MB	(2) 256K x 16	(2) 256K x 16	(2) 256K x 16	None
4MB	(2) 256K x 16	(2) 256K x 16	(2) 256K x 16	(2) 256K x 16

Note: The location of banks 1, 2 & 3 are unidentified.

CPU SPEED SELECTION (CYRIX)							
CPU speed	Clock speed	Multiplier	JP14	JP15	JP16	JP18	JP19
166MHz	66MHz	2x	1 & 2	2 & 3	2 & 3	1 & 2	1 & 2

Note: Pins designated should be in the closed position.

CPU SPEED SELECTION (AMD)							
CPU speed	Clock speed	Multiplier	JP14	JP15	JP16	JP18	JP19
75MHz	50MHz	1.5x	2 & 3	2 & 3	2 & 3	1 & 2	1 & 2
90MHz	60MHz	1.5x	2 & 3	2 & 3	1 & 2	1 & 2	1 & 2
100MHz	66MHz	1.5x	1 & 2	2 & 3	2 & 3	1 & 2	1 & 2

Note: Pins designated should be in the closed position.

Continued on next page. . .

ASUS COMPUTER INTERNATIONAL

P/I - AP55TV

... continued from previous page

CPU SPEED SELECTION (INTEL)							
CPU speed	Clock speed	Multiplier	JP14	JP15	JP16	JP18	JP19
75MHz	50MHz	1.5x	2 & 3	2 & 3	2 & 3	1 & 2	1 & 2
90MHz	60MHz	1.5x	2 & 3	2 & 3	1 & 2	1 & 2	1 & 2
100MHz	66MHz	1.5x	1 & 2	2 & 3	2 & 3	1 & 2	1 & 2
120MHz	60MHz	2x	2 & 3	2 & 3	1 & 2	1 & 2	2 & 3
133MHz	66MHz	2x	1 & 2	2 & 3	2 & 3	1 & 2	2 & 3
150MHz	60MHz	2.5x	2 & 3	2 & 3	1 & 2	2 & 3	2 & 3
166MHz	66MHz	2.5x	1 & 2	2 & 3	2 & 3	2 & 3	2 & 3
180MHz	60MHz	3x	2 & 3	2 & 3	1 & 2	2 & 3	1 & 2
200MHz	66MHz	3x	1 & 2	2 & 3	2 & 3	2 & 3	1 & 2

Note: Pins designated should be in the closed position.

CPU VOLTAGE SELECTION (SINGLE)		
Voltage	JP20	JP21
í 3.38v (STD)	Closed	Open
3.5v (VRE)	Open	Closed

CPU VOLTAGE SELECTION (DUAL)					
Voltage	JP22	JP23	JP24	JP25	JP26
2.5v	Open	Open	Open	Closed	Open
2.7v	Open	Closed	Open	Open	Open
í 2.8v	Closed	Open	Open	Open	Open
2.9v	Open	Open	Closed	Open	Open
Reserved	Open	Open	Open	Open	Closed