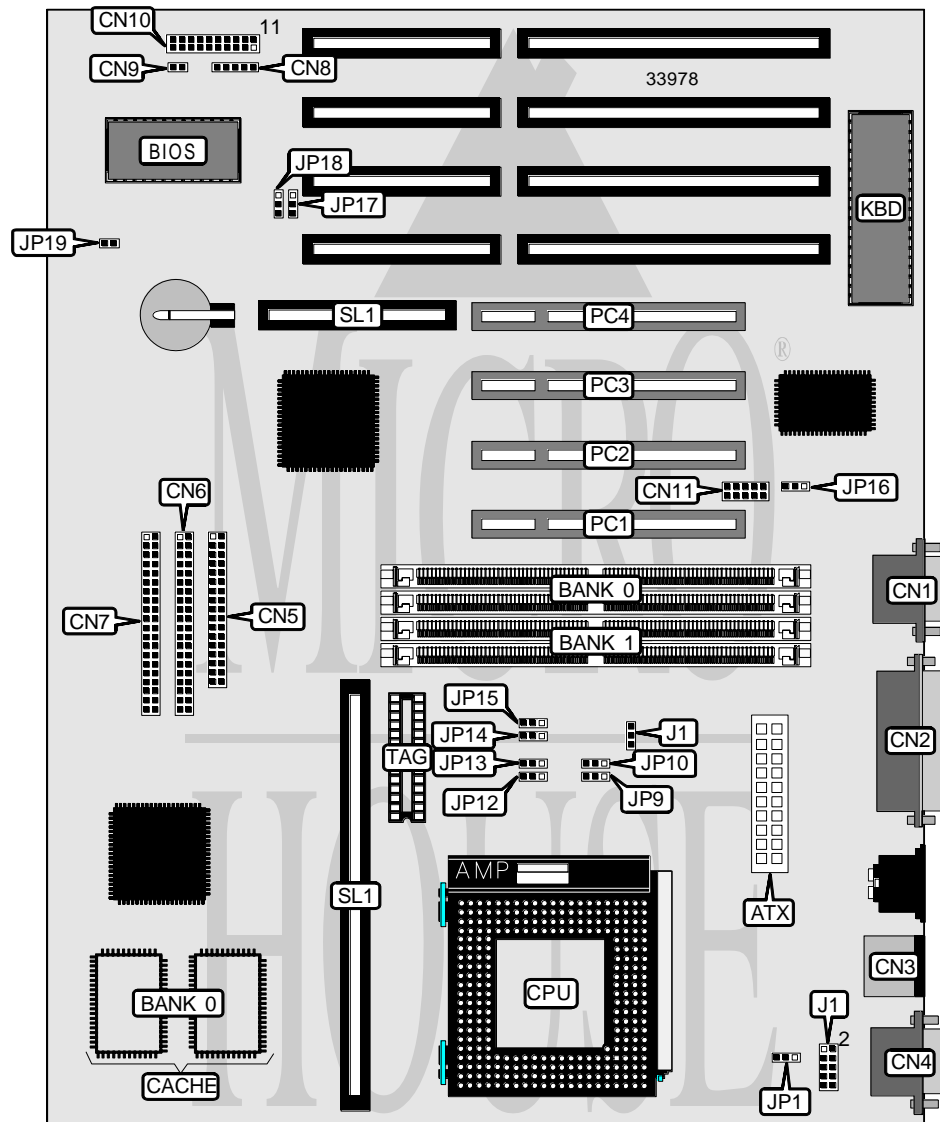


ASUS COMPUTER INTERNATIONAL P/I-XP55T2P4 (REV. 3.00)

Processor	CX M1/AM K5/Pentium
Processor Speed	75/90/100/120/133/150/166/200MHz
Chip Set	Intel
Video Chip Set	None
Maximum Onboard Memory	256MB (EDO supported)
Maximum Video Memory	None
Cache	256/512KB
BIOS	Unidentified
Dimensions	330mm x 218mm
I/O Options	32-bit PCI slots (4), floppy drive interface, green PC connector, IDE interfaces (2), parallel port, PS/2 mouse port, serial ports (2), cache slot, IR connector, USB connector, ATX power connector, MediaBus slot
NPU Options	None



Continued on next page. . .

ASUS COMPUTER INTERNATIONAL P/I-XP55T2P4 (REV. 3.00)

... continued from previous page

CONNECTIONS			
Purpose	Location	Purpose	Location
ATX power connector	ATX	Power LED & keylock	CN10 pins 1 - 5
Serial port 2	CN1	Speaker	CN10 pins 7 - 10
Parallel port	CN2	Power LED	CN10 pins 12 & 13
PS/2 mouse port	CN3	Green PC connector	CN10 pins 14 & 15
Serial port 1	CN4	ATX power switch	CN10 pins 16 & 17
Floppy drive interface	CN5	Reset switch	CN10 pins 19 & 20
IDE interface 2	CN6	USB connector	CN11
IDE interface 1	CN7	32-bit PCI slots	PC1 – PC4
IR connector	CN8	Cache slot	SL1
IDE interface LED	CN9	MediaBus slot	SL2

USER CONFIGURABLE SETTINGS		
Function	Label	Position
? Factory configured - do not alter	J1	Unidentified
? On board I/O enabled	JP16	Pins 1 & 2 closed
On board I/O disabled	JP16	Pins 2 & 3 closed
? CMOS memory normal operation	JP17	Pins 1 & 2 closed
CMOS memory clear	JP17	Pins 2 & 3 closed
? Flash BIOS write protect disabled	JP18	Pins 1 & 2 closed
Flash BIOS write protect enabled	JP18	Pins 2 & 3 closed
? Battery test mode normal operation	JP19	Closed
Battery test mode test mode enabled	JP19	Open

DRAM CONFIGURATION		
Size	Bank 0	Bank 1
8MB	(2) 1M x 36	None
16MB	(2) 2M x 36	None
16MB	(2) 1M x 36	(2) 1M x 36
24MB	(2) 2M x 36	(2) 1M x 36
32MB	(2) 4M x 36	None
32MB	(2) 2M x 36	(2) 2M x 36
40MB	(2) 4M x 36	(2) 1M x 36
48MB	(2) 4M x 36	(2) 2M x 36
64MB	(2) 8M x 36	None
64MB	(2) 4M x 36	(2) 4M x 36
72MB	(2) 8M x 36	(2) 1M x 36
80MB	(2) 8M x 36	(2) 2M x 36
96MB	(2) 8M x 36	(2) 4M x 36
128MB	(2) 8M x 36	(2) 8M x 36
128MB	(2) 16M x 36	None
136MB	(2) 16M x 36	(2) 1M x 36

Continued on next page. ...

ASUS COMPUTER INTERNATIONAL

P/I-XP55T2P4 (REV. 3.00)

... continued from previous page

DRAM CONFIGURATION (CON'T)		
Size	Bank 0	Bank 1
144MB	(2) 16M x 36	(2) 2M x 36
160MB	(2) 16M x 36	(2) 4M x 36
192MB	(2) 16M x 36	(2) 8M x 36
256MB	(2) 16M x 36	(2) 16M x 36

Note: Board accepts EDO memory. Banks are interchangeable.

CACHE CONFIGURATION			
Size	Bank 0	Bank 1	TAG
256KB (A)	None	256KB module installed	Unidentified
256KB (B)	(2) 32K x 32	Not installed	Unidentified
512KB (A)	(2) 32K x 32	256KB module installed	Unidentified
512KB (B)	None	512KB module installed	Unidentified
512KB (C)	(2) 64K x 32	Not installed	Unidentified

CACHE JUMPER CONFIGURATION	
Size	JP14
256KB (A)	Pins 1 & 2 closed
256KB (B)	Pins 1 & 2 closed
512KB (A)	Pins 2 & 3 closed
512KB (B)	Pins 2 & 3 closed
512KB (C)	Pins 2 & 3 closed

CACHEABLE SIZE CONFIGURATION	
Size	JP15
64MB	Pins 1 & 2 closed
512MB	Pins 2 & 3 closed

CPU SPEED SELECTION (CYRIX)						
CPU speed	Clock speed	Multiplier	JP9	JP10	JP12	JP13
166MHz	66MHz	2x	1 & 2	2 & 3	2 & 3	1 & 2

Note: Pins designated should be in the closed position.

CPU SPEED SELECTION (AMD)						
CPU speed	Clock speed	Multiplier	JP9	JP10	JP12	JP13
75MHz	50MHz	1.5x	2 & 3	2 & 3	1 & 2	1 & 2
90MHz	60MHz	1.5x	2 & 3	1 & 2	1 & 2	1 & 2
100MHz	66MHz	1.5x	1 & 2	2 & 3	1 & 2	1 & 2

Note: Pins designated should be in the closed position.

Continued on next page...

ASUS COMPUTER INTERNATIONAL P/I-XP55T2P4 (REV. 3.00)

... continued from previous page

CPU SPEED SELECTION (INTEL)						
CPU speed	Clock speed	Multiplier	JP9	JP10	JP12	JP13
75MHz	50MHz	1.5x	2 & 3	2 & 3	1 & 2	1 & 2
90MHz	60MHz	1.5x	2 & 3	1 & 2	1 & 2	1 & 2
100MHz	66MHz	1.5x	1 & 2	2 & 3	1 & 2	1 & 2
120MHz	60MHz	2x	2 & 3	1 & 2	2 & 3	1 & 2
133MHz	66MHz	2x	1 & 2	2 & 3	2 & 3	1 & 2
150MHz	60MHz	2.5x	2 & 3	1 & 2	2 & 3	2 & 3
166MHz	66MHz	2.5x	1 & 2	2 & 3	2 & 3	2 & 3
200MHz	66MHz	3x	1 & 2	2 & 3	1 & 2	2 & 3

Note: Pins designated should be in the closed position.

CPU VOLTAGE SELECTION (SINGLE)	
Voltage	JP1
3.3v – 3.465v (STD)	Pins 1 & 2 closed
3.4v – 3.6v (VRE)	Pins 2 & 3 closed

CPU VOLTAGE SELECTION (DUAL)	
Voltage	J2
2.5v	Pins 1 & 2 closed
2.7v	Pins 3 & 4 closed
2.8v	Pins 5 & 6 closed
2.9v	Pins 7 & 8 closed