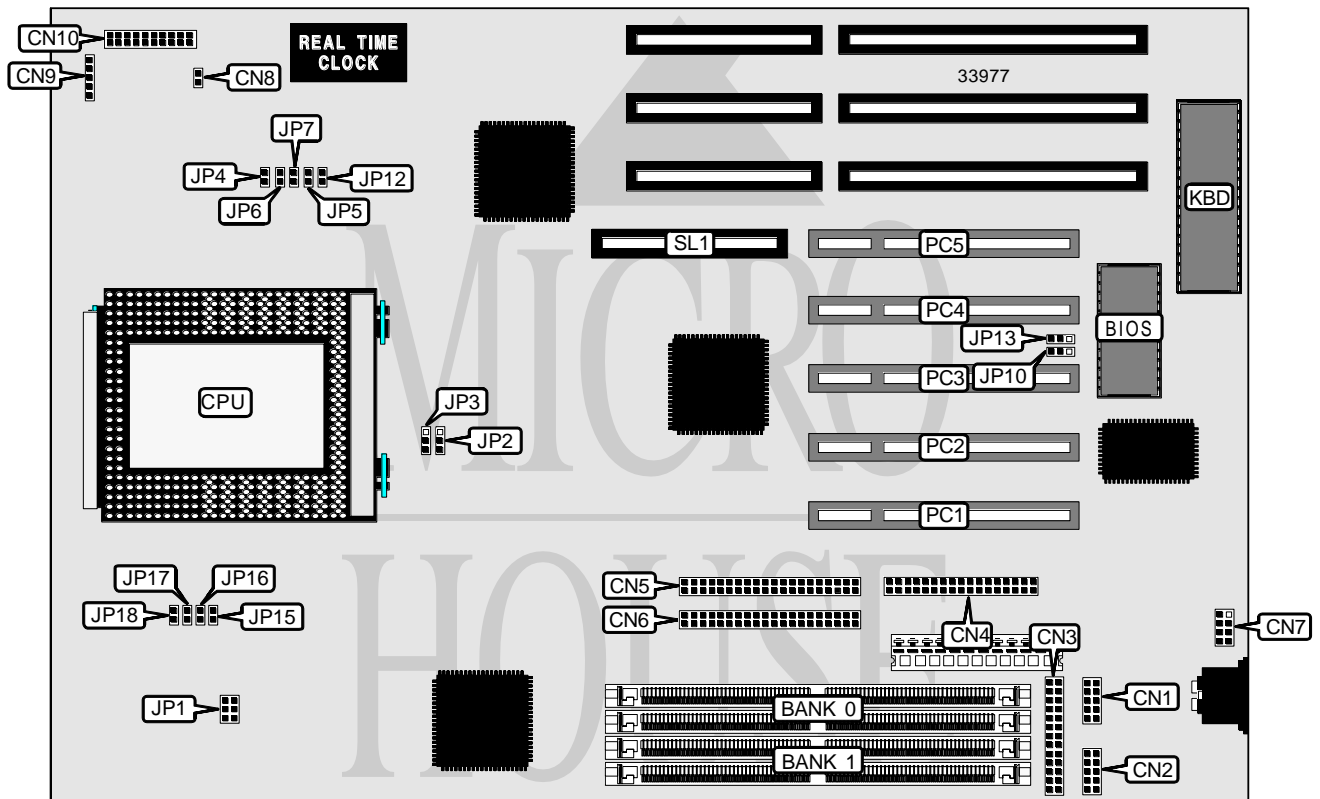


ASUS COMPUTER INTERNATIONAL P/I-P6NP5 (REV. 1.41)

Processor	Pentium Pro
Processor Speed	150/166/180/200MHz
Chip Set	Intel
Video Chip Set	None
Maximum Onboard Memory	256MB (EDO supported)
Maximum Video Memory	None
Cache	256/512KB (located on Pentium Pro CPU)
BIOS	Unidentified
Dimensions	330mm x 218mm
I/O Options	32-bit PCI slots (5), floppy drive interface, IDE interfaces (2), parallel port, PS/2 mouse interface, serial ports (2), MediaBus slot, IR connector
NPU Options	None



Continued on next page. . .

ASUS COMPUTER INTERNATIONAL

P/I-P6NP5 (REV. 1.41)

... continued from previous page

CONNECTIONS			
Purpose	Location	Purpose	Location
Serial port 1	CN1	IDE interface LED	CN8
Serial port 2	CN2	IR connector	CN9
Parallel port	CN3	Front panel connector	CN10
Floppy drive interface	CN4	Chassis fan power	JP1
IDE interface 2	CN5	32-bit PCI slots	PC1 – PC5
IDE interface 1	CN6	MediaBus slot	SL1
PS/2 mouse interface	CN7		

USER CONFIGURABLE SETTINGS		
Function	Label	Position
? On board I/O enabled	JP10	Pins 1 & 2 closed
On board I/O disabled	JP10	Pins 2 & 3 closed
? CMOS memory normal operation	JP12	Open
CMOS memory clear	JP12	Closed
? Flash BIOS write protect disabled	JP13	Pins 1 & 2 closed
Flash BIOS write protect enabled	JP13	Pins 2 & 3 closed

DRAM CONFIGURATION		
Size	Bank 0	Bank 1
8MB	(2) 1M x 36	None
16MB	(2) 2M x 36	None
16MB	(2) 1M x 36	(2) 1M x 36
24MB	(2) 2M x 36	(2) 1M x 36
32MB	(2) 4M x 36	None
32MB	(2) 2M x 36	(2) 2M x 36
40MB	(2) 4M x 36	(2) 1M x 36
48MB	(2) 4M x 36	(2) 2M x 36
64MB	(2) 8M x 36	None
64MB	(2) 4M x 36	(2) 4M x 36
72MB	(2) 8M x 36	(2) 1M x 36
80MB	(2) 8M x 36	(2) 2M x 36
96MB	(2) 8M x 36	(2) 4M x 36
128MB	(2) 8M x 36	(2) 8M x 36
128MB	(2) 16M x 36	None
136MB	(2) 16M x 36	(2) 1M x 36
144MB	(2) 16M x 36	(2) 2M x 36
160MB	(2) 16M x 36	(2) 4M x 36
192MB	(2) 16M x 36	(2) 8M x 36
256MB	(2) 16M x 36	(2) 16M x 36

Note: Board accepts EDO memory. Banks are interchangeable.

CACHE CONFIGURATION
Note: 256KB/512KB cache is located on the Pentium Pro CPU.

Continued on next page...

ASUS COMPUTER INTERNATIONAL

P/I-P6NP5 (REV. 1.41)

... continued from previous page

CPU SPEED SELECTION								
CPU speed	Clock speed	Multiplier	JP2	JP3	JP4	JP5	JP6	JP7
150MHz	60MHz	2.5x	2 & 3	1 & 2	Closed	Closed	Closed	Open
166MHz	66MHz	2.5x	1 & 2	2 & 3	Closed	Closed	Closed	Open
180MHz	60MHz	3x	2 & 3	1 & 2	Closed	Closed	Open	Closed
200MHz	66MHz	3x	1 & 2	2 & 3	Closed	Closed	Open	Closed

Note: Pins designated should be in the closed position.

CPU VOLTAGE SELECTION				
Voltage	JP15	JP16	JP17	JP18
2.1	Closed	Open	Open	Open
2.2	Open	Closed	Open	Open
2.3	Closed	Closed	Open	Open
2.4	Open	Open	Closed	Open
2.5	Closed	Open	Closed	Open
2.6	Open	Closed	Closed	Open
2.7	Closed	Closed	Closed	Open
2.8	Open	Open	Open	Closed
2.9	Closed	Open	Open	Closed
3.0	Open	Closed	Open	Closed
3.1	Closed	Closed	Open	Closed
3.2	Open	Open	Closed	Closed
3.3	Closed	Open	Closed	Closed
3.4	Open	Closed	Closed	Closed
3.5	Closed	Closed	Closed	Closed