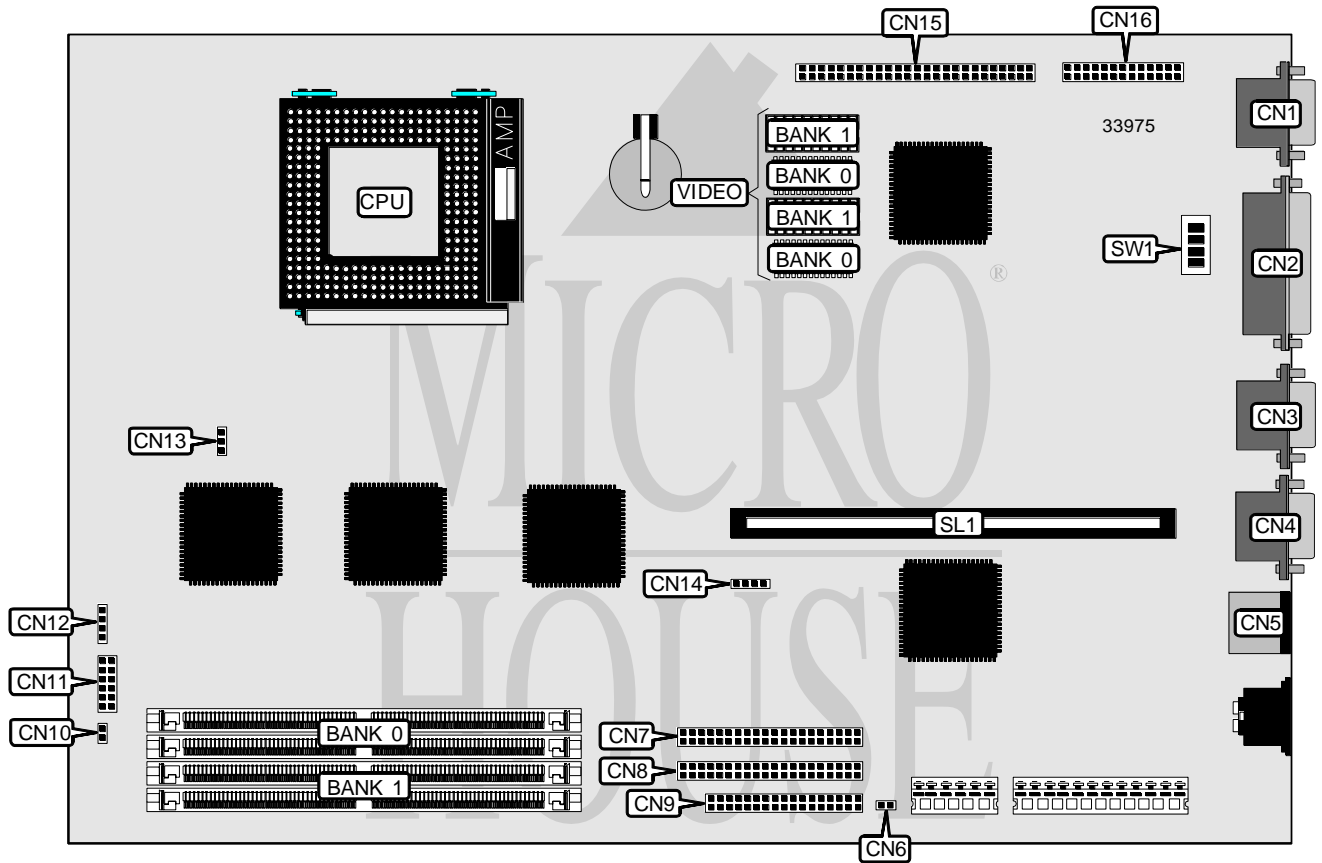


SIEMENS NIXDORF INFORMATIONSSYSTEME AG SYSTEM BOARD D841

Processor	Pentium
Processor Speed	Unidentified
Chip Set	Unidentified
Video Chip Set	Tseng Labs
Maximum Onboard Memory	128MB
Maximum Video Memory	2MB
Cache	256KB
BIOS	Unidentified
Dimensions	330mm x 218mm
I/O Options	Floppy drive interface, IDE interfaces (2), parallel port, PS/2 mouse port, serial ports (2), VESA pass through connector, VGA port, riser slot, imageport interface, soft off power switch, soft off power supply
NPU Options	None



Continued on next page. . .

SIEMENS NIXDORF INFORMATIONSSYSTEME AG

SYSTEM BOARD D841

... continued from previous page

CONNECTIONS			
Purpose	Location	Purpose	Location
VGA port	CN1	Soft off power switch	CN10
Parallel port	CN2	Front panel connector	CN11
Serial port 2	CN3	Speaker	CN12
Serial port 1	CN4	Chassis fan power	CN13
PS/2 mouse port	CN5	IDE interface LED	CN14
Soft off power supply	CN6	Imageport interface	CN15
IDE interface 1	CN7	VESA pass through connector	CN16
IDE interface 2	CN8	Riser slot	SL1
Floppy drive interface	CN9		

USER CONFIGURABLE SETTINGS		
Function	Label	Position
? Flash BIOS write protect disabled	SW1/1	Off
Flash BIOS write protect enabled	SW1/1	On
? Factory configured - do not alter	SW1/2	Off
? Flash BIOS normal operation	SW1/3	Off
Flash BIOS recovery mode	SW1/3	On
? Floppy drive write protect disabled	SW1/4	Off
Floppy drive write protect enabled	SW1/4	On

DRAM CONFIGURATION		
Size	Bank 0	Bank 1
8MB	(2) 1M x 36	None
16MB	(2) 2M x 36	None
16MB	(2) 1M x 36	(2) 1M x 36
24MB	(2) 2M x 36	(2) 1M x 36
32MB	(2) 4M x 36	None
32MB	(2) 2M x 36	(2) 2M x 36
40MB	(2) 4M x 36	(2) 1M x 36
48MB	(2) 4M x 36	(2) 2M x 36
64MB	(2) 8M x 36	None
64MB	(2) 4M x 36	(2) 4M x 36
72MB	(2) 8M x 36	(2) 1M x 36
80MB	(2) 8M x 36	(2) 2M x 36
96MB	(2) 8M x 36	(2) 4M x 36
128MB	(2) 8M x 36	(2) 8M x 36

CACHE CONFIGURATION
Note: 256KB cache is factory installed and is not configurable. The location is unidentified.

Continued on next page. . .

SIEMENS NIXDORF INFORMATIONSSYSTEME AG

SYSTEM BOARD D841

... continued from previous page

VIDEO MEMORY CONFIGURATION		
Size	Bank 0	Bank 1
1MB	(2) 256K x 16	None
2MB	(2) 256K x 16	(2) 256K x 16

Note: Bank 0 is factory installed and is not configurable.