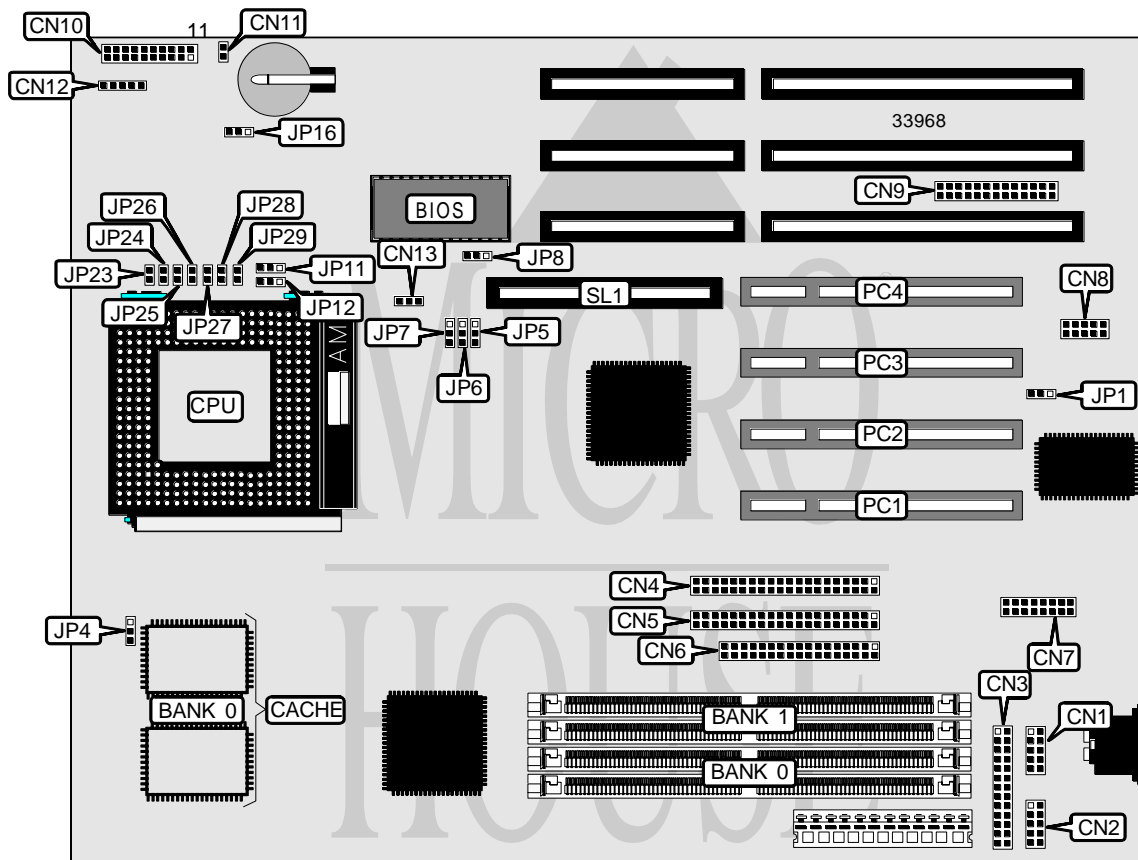


ASUS COMPUTER INTERNATIONAL

P/I-P55SP4V

Processor	CX M1/AM K5/Pentium
Processor Speed	75/90/100/120/133/150/166/180/200MHz
Chip Set	SIS
Video Chip Set	SIS
Maximum Onboard Memory	256MB (EDO supported)
Maximum Video Memory	2MB
Cache	512KB
BIOS	Unidentified
Dimensions	254mm x 218mm
I/O Options	32-bit PCI slots (4), floppy drive interface, green PC connector, IDE interfaces (2), parallel port, serial ports (2), VGA feature connector, IR connector, USB connector, VGA-PS/2 mouse connector, MediaBus slot
NPU Options	None



Continued on next page. . .

ASUS COMPUTER INTERNATIONAL

P/I - P 5 5 S P 4 V

... continued from previous page

CONNECTIONS			
Purpose	Location	Purpose	Location
Serial port 1	CN1	Speaker	CN10 pins 7 - 10
Serial port 2	CN2	Turbo LED	CN10 pins 12 & 13
Parallel port	CN3	Green PC connector	CN10 pins 14 & 15
IDE interface 1	CN4	Reset switch	CN10 pins 19 & 20
IDE interface 2	CN5	IDE interface LED	CN11
Floppy drive interface	CN6	IR connector	CN12
VGA-PS/2 mouse connector	CN7	Chassis fan power	CN13
USB connector	CN8	32-bit PCI slots	PC1 – PC4
VGA feature connector	CN9	MediaBus slot	SL1
Power LED & keylock	CN10 pins 1 - 5		

USER CONFIGURABLE SETTINGS		
Function	Label	Position
? On board I/O enabled	JP1	Pins 1 & 2 closed
On board I/O disabled	JP1	Pins 2 & 3 closed
? Flash BIOS normal operation	JP8	Pins 1 & 2 closed
Flash BIOS boot block enabled	JP8	Pins 2 & 3 closed
? CMOS memory normal operation	JP16	Pins 1 & 2 closed
CMOS memory clear	JP16	Pins 2 & 3 closed

DRAM CONFIGURATION		
Size	Bank 0	Bank 1
8MB	(2) 1M x 36	None
16MB	(2) 2M x 36	None
16MB	(2) 1M x 36	(2) 1M x 36
24MB	(2) 2M x 36	(2) 1M x 36
32MB	(2) 4M x 36	None
32MB	(2) 2M x 36	(2) 2M x 36
40MB	(2) 4M x 36	(2) 1M x 36
48MB	(2) 4M x 36	(2) 2M x 36
64MB	(2) 8M x 36	None
64MB	(2) 4M x 36	(2) 4M x 36
72MB	(2) 8M x 36	(2) 1M x 36
80MB	(2) 8M x 36	(2) 2M x 36
96MB	(2) 8M x 36	(2) 4M x 36
128MB	(2) 8M x 36	(2) 8M x 36
128MB	(2) 16M x 36	None
136MB	(2) 16M x 36	(2) 1M x 36
144MB	(2) 16M x 36	(2) 2M x 36
160MB	(2) 16M x 36	(2) 4M x 36
192MB	(2) 16M x 36	(2) 8M x 36
256MB	(2) 16M x 36	(2) 16M x 36

Note: Board accepts EDO memory. Banks are interchangeable.

Continued on next page. . .

ASUS COMPUTER INTERNATIONAL

P/I-P55SP4V

... continued from previous page

CACHE CONFIGURATION	
Size	Bank 0
512KB	(3) 64K x 32

CACHE TYPE CONFIGURATION	
Type	JP4
Linear mode	Pins 1 & 2 closed
Burst mode	Pins 2 & 3 closed

CPU SPEED SELECTION (CYRIX)							
CPU speed	Clock speed	Multiplier	JP5	JP6	JP7	JP11	JP12
166MHz	66MHz	2x	1 & 2	1 & 2	1 & 2	1 & 2	2 & 3

Note: Pins designated should be in the closed position.

CPU SPEED SELECTION (AMD)							
CPU speed	Clock speed	Multiplier	JP5	JP6	JP7	JP11	JP12
75MHz	50MHz	1.5x	1 & 2	2 & 3	2 & 3	1 & 2	1 & 2
90MHz	60MHz	1.5x	1 & 2	1 & 2	2 & 3	1 & 2	1 & 2
100MHz	66MHz	1.5x	1 & 2	1 & 2	1 & 2	1 & 2	1 & 2

Note: Pins designated should be in the closed position.

CPU SPEED SELECTION (INTEL)							
CPU speed	Clock speed	Multiplier	JP5	JP6	JP7	JP11	JP12
75MHz	50MHz	1.5x	1 & 2	2 & 3	2 & 3	1 & 2	1 & 2
90MHz	60MHz	1.5x	1 & 2	1 & 2	2 & 3	1 & 2	1 & 2
100MHz	66MHz	1.5x	1 & 2	1 & 2	1 & 2	1 & 2	1 & 2
120MHz	60MHz	2x	1 & 2	1 & 2	2 & 3	1 & 2	2 & 3
133MHz	66MHz	2x	1 & 2	1 & 2	1 & 2	1 & 2	2 & 3
150MHz	60MHz	2.5x	1 & 2	1 & 2	2 & 3	2 & 3	2 & 3
166MHz	66MHz	2.5x	1 & 2	1 & 2	1 & 2	2 & 3	2 & 3
180MHz	60MHz	3x	1 & 2	1 & 2	2 & 3	2 & 3	1 & 2
200MHz	66MHz	3x	1 & 2	1 & 2	1 & 2	2 & 3	1 & 2

Note: Pins designated should be in the closed position.

CPU VOLTAGE SELECTION (SINGLE)		
Voltage	JP23	JP24
3.38v	Closed	Open
3.52v	Open	Closed

Continued on next page...

ASUS COMPUTER INTERNATIONAL

P/I - P 5 5 S P 4 V

... continued from previous page

CPU VOLTAGE SELECTION (DUAL)					
Voltage	JP25	JP26	JP27	JP28	JP29
2.5v	Open	Open	Open	Closed	Open
2.7v	Open	Closed	Open	Open	Open
2.8v	Closed	Open	Open	Open	Open
2.88v	Open	Open	Closed	Open	Open
Reserved	Open	Open	Open	Open	Closed