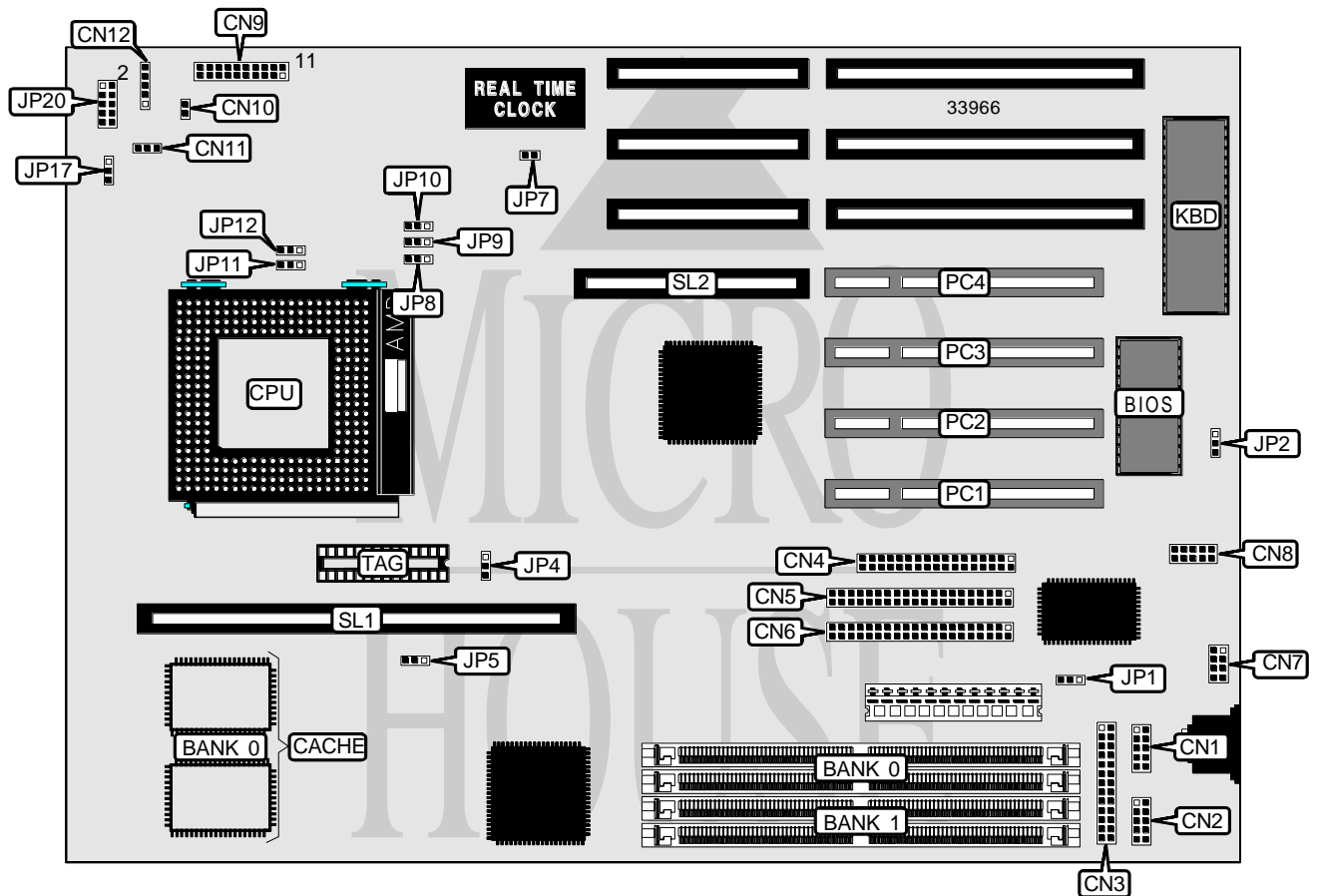


ASUS COMPUTER INTERNATIONAL P/I-P55T2P4 (REV. 3.10)

Processor	CX M1/AM K5/Pentium
Processor Speed	75/90/100/120/133/150/166/200MHz
Chip Set	Intel
Video Chip Set	None
Maximum Onboard Memory	256MB (EDO supported)
Maximum Video Memory	None
Cache	256/512KB
BIOS	Unidentified
Dimensions	330mm x 218mm
I/O Options	32-bit PCI slots (4), floppy drive interface, green PC connector, IDE interfaces (2), parallel port, PS/2 mouse interface, serial ports (2), cache slot, IR connector, USB connector, MediaBus slot
NPU Options	None



Continued on next page. . .

ASUS COMPUTER INTERNATIONAL P/I-P55T2P4 (REV. 3.10)

... continued from previous page

CONNECTIONS			
Purpose	Location	Purpose	Location
Serial port 1	CN1	Turbo LED	CN9 pins 12 & 13
Serial port 2	CN2	Green PC connector	CN9 pins 14 & 15
Parallel port	CN3	Reset switch	CN9 pins 19 & 20
Floppy drive interface	CN4	IDE interface LED	CN10
IDE interface 1	CN5	Chassis fan power	CN11
IDE interface 2	CN6	IR connector	CN12
PS/2 mouse interface	CN7	32-bit PCI slots	PC1 – PC4
USB connector	CN8	Cache slot	SL1
Power LED & keylock	CN9 pins 1 - 5	MediaBus slot	SL2
Speaker	CN9 pins 7 - 10		

USER CONFIGURABLE SETTINGS		
Function	Label	Position
? On board I/O enabled	JP1	Pins 1 & 2 closed
On board I/O disabled	JP1	Pins 2 & 3 closed
? Flash BIOS normal operation	JP2	Pins 1 & 2 closed
Flash BIOS boot block enabled	JP2	Pins 2 & 3 closed
? CMOS memory normal operation	JP7	Open
CMOS memory clear	JP7	Closed

DRAM CONFIGURATION		
Size	Bank 0	Bank 1
8MB	(2) 1M x 36	None
16MB	(2) 2M x 36	None
16MB	(2) 1M x 36	(2) 1M x 36
24MB	(2) 2M x 36	(2) 1M x 36
32MB	(2) 4M x 36	None
32MB	(2) 2M x 36	(2) 2M x 36
40MB	(2) 4M x 36	(2) 1M x 36
48MB	(2) 4M x 36	(2) 2M x 36
64MB	(2) 8M x 36	None
64MB	(2) 4M x 36	(2) 4M x 36
72MB	(2) 8M x 36	(2) 1M x 36
80MB	(2) 8M x 36	(2) 2M x 36
96MB	(2) 8M x 36	(2) 4M x 36
128MB	(2) 8M x 36	(2) 8M x 36
128MB	(2) 16M x 36	None
136MB	(2) 16M x 36	(2) 1M x 36
144MB	(2) 16M x 36	(2) 2M x 36
160MB	(2) 16M x 36	(2) 4M x 36
192MB	(2) 16M x 36	(2) 8M x 36
256MB	(2) 16M x 36	(2) 16M x 36

Note: Board accepts EDO memory. Banks are interchangeable.

Continued on next page. . .

ASUS COMPUTER INTERNATIONAL

P/I-P55T2P4 (REV. 3.10)

... continued from previous page

CACHE CONFIGURATION			
Size	Bank 0	SL1	TAG
256KB (A)	(2) 32K x 32	Not installed	(1) 16K/32K x 8
256KB (B)	None	256KB module installed	(1) 16K/32K x 8
512KB (A)	(2) 64K x 32	Not installed	(1) 16K/32K x 8
512KB (B)	None	512KB module installed	(1) 16K/32K x 8
512KB (C)	(2) 32K x 32	256KB module installed	(1) 16K/32K x 8

Note: If cache module has TAG installed, leave TAG socket empty.

CACHE JUMPER CONFIGURATION	
Size	JP5
256KB (A)	Pins 1 & 2 closed
256KB (B)	Pins 1 & 2 closed
512KB (A)	Pins 2 & 3 closed
512KB (B)	Pins 2 & 3 closed
512KB (C)	Pins 2 & 3 closed

CACHEABLE SIZE CONFIGURATION	
Size	JP4
64MB (burst or M cache)	Pins 1 & 2 closed
512MB (burst only)	Pins 2 & 3 closed

CPU SPEED SELECTION (CYRIX)							
CPU speed	Clock speed	Multiplier	JP8	JP9	JP10	JP11	JP12
166MHz	66MHz	2x	2 & 3	1 & 2	2 & 3	2 & 3	1 & 2

Note: Pins designated should be in the closed position.

CPU SPEED SELECTION (AMD)							
CPU speed	Clock speed	Multiplier	JP8	JP9	JP10	JP11	JP12
75MHz	50MHz	1.5x	2 & 3	2 & 3	2 & 3	1 & 2	1 & 2
90MHz	60MHz	1.5x	2 & 3	2 & 3	1 & 2	1 & 2	1 & 2
100MHz	66MHz	1.5x	2 & 3	1 & 2	2 & 3	1 & 2	1 & 2

Note: Pins designated should be in the closed position.

Continued on next page...

ASUS COMPUTER INTERNATIONAL P/I-P55T2P4 (REV. 3.10)

... continued from previous page

CPU SPEED SELECTION (INTEL)							
CPU speed	Clock speed	Multiplier	JP8	JP9	JP10	JP11	JP12
75MHz	50MHz	1.5x	2 & 3	2 & 3	2 & 3	1 & 2	1 & 2
90MHz	60MHz	1.5x	2 & 3	2 & 3	1 & 2	1 & 2	1 & 2
100MHz	66MHz	1.5x	2 & 3	1 & 2	2 & 3	1 & 2	1 & 2
120MHz	60MHz	2x	2 & 3	2 & 3	1 & 2	2 & 3	1 & 2
133MHz	66MHz	2x	2 & 3	1 & 2	2 & 3	2 & 3	1 & 2
150MHz	60MHz	2.5x	2 & 3	2 & 3	1 & 2	2 & 3	1 & 2
166MHz	66MHz	2.5x	2 & 3	1 & 2	2 & 3	2 & 3	2 & 3
200MHz	66MHz	3x	2 & 3	1 & 2	2 & 3	1 & 2	2 & 3

Note: Pins designated should be in the closed position.

CPU VOLTAGE SELECTION (SINGLE)	
Voltage	JP17
3.3v – 3.465v	Pins 1 & 2 closed
3.4v – 3.6v	Pins 2 & 3 closed

CPU VOLTAGE SELECTION (DUAL)	
Voltage	JP20
2.5v	Pins 1 & 2 closed
2.7v	Pins 3 & 4 closed
2.8v	Pins 5 & 6 closed
2.9v	Pins 7 & 8 closed